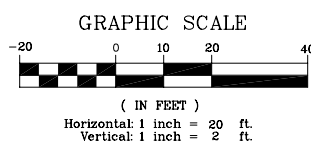
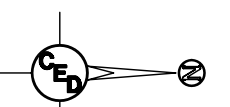
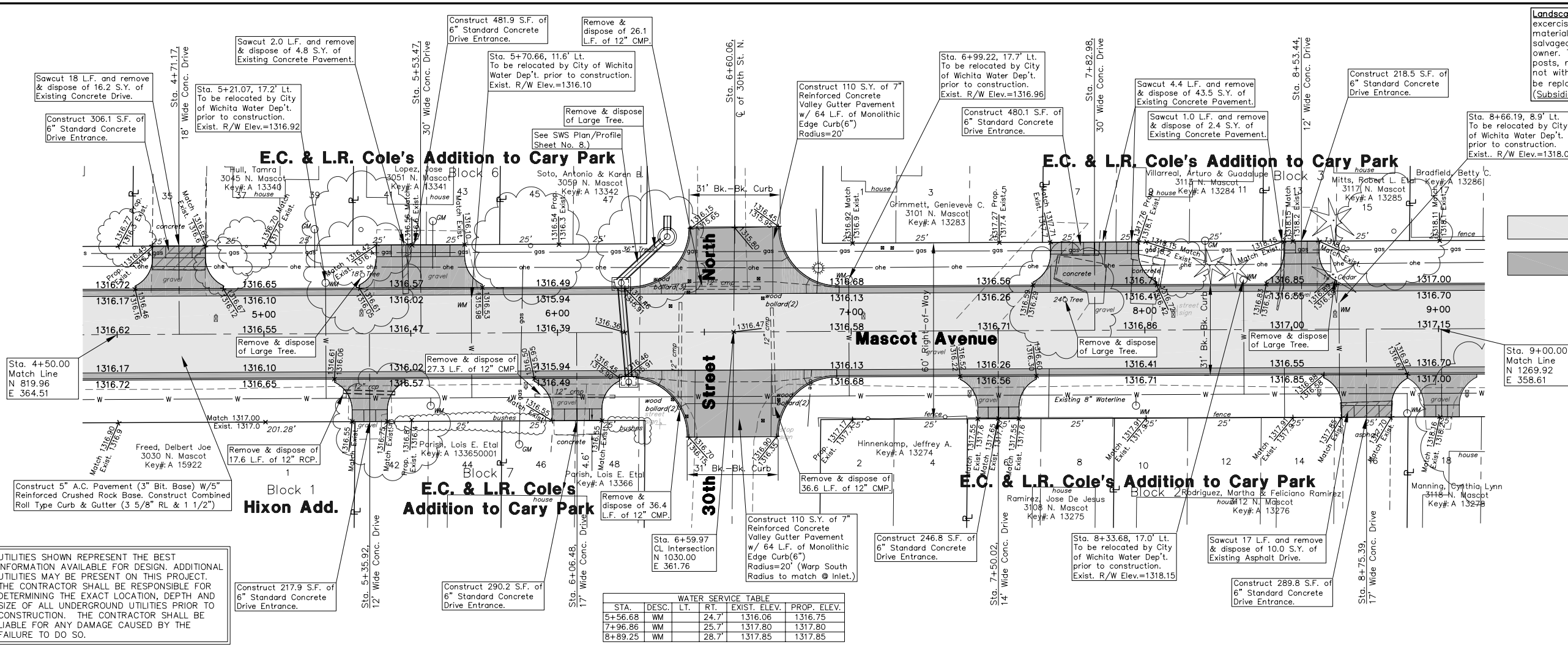


Landscaping General Note: The Contractor shall exercise care in removing existing landscaping material. All material required for removal shall be salvaged and stockpiled, when possible, for the owner. This includes but is not limited to timbers, posts, rocks, stones, and fencing. Any such material not within right-of-way limits and damaged shall be replaced at the contractor's expense. (Subsidiary to "Site Control & Restoration".)



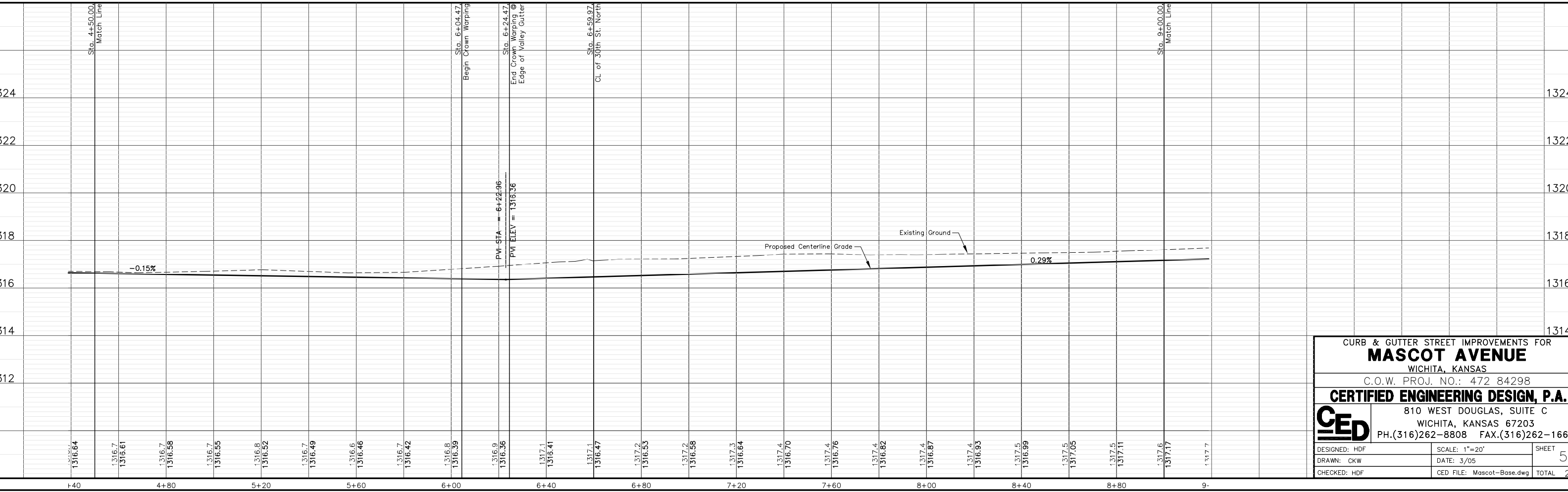
- UTILITY LEGEND**
- = Catv Box
 - = Guard Post/Bollard
 - = Guy Anchor
 - = Guy Pole
 - = Light Pole
 - = Mailbox
 - = Gas Meter
 - = Power Pole
 - = Sign
 - = San. Sewer Manhole
 - = Storm Sewer Manhole
 - = Telephone Riser
 - = Water Meter
 - = Water Valve
 - = Water Well
 - = Fire Hydrant
 - = Coniferous Tree
 - = Deciduous Tree
 - = Overhead Electric
 - = Gas Line
 - = Water Line



UTILITIES SHOWN REPRESENT THE BEST INFORMATION AVAILABLE FOR DESIGN. ADDITIONAL UTILITIES MAY BE PRESENT ON THIS PROJECT. THE CONTRACTOR SHALL BE RESPONSIBLE FOR DETERMINING THE EXACT LOCATION, DEPTH AND SIZE OF ALL UNDERGROUND UTILITIES PRIOR TO CONSTRUCTION. THE CONTRACTOR SHALL BE LIABLE FOR ANY DAMAGE CAUSED BY THE FAILURE TO DO SO.

WATER SERVICE TABLE

STA.	DESC.	LT.	RT.	EXIST. ELEV.	PROP. ELEV.
5+56.68	WM	24.7'		1316.06	1316.75
7+96.86	WM	25.7'		1317.80	1317.80
8+89.25	WM	28.7'		1317.85	1317.85



CURB & GUTTER STREET IMPROVEMENTS FOR
MASCOT AVENUE
WICHITA, KANSAS
C.O.W. PROJ. NO.: 472 84298

CERTIFIED ENGINEERING DESIGN, P.A.
810 WEST DOUGLAS, SUITE C
WICHITA, KANSAS 67203
PH.(316)262-8808 FAX.(316)262-1669

DESIGNED: HDF	SCALE: 1"=20'	SHEET
DRAWN: CKW	DATE: 3/05	5
CHECKED: HDF	FILE: Mascot-Base.dwg	TOTAL 20