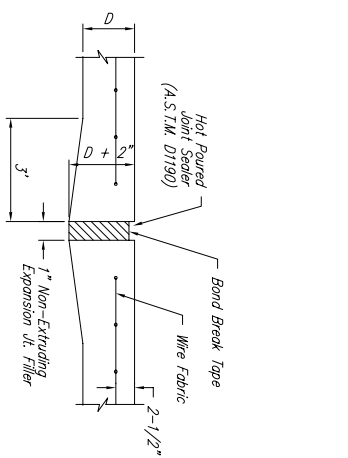
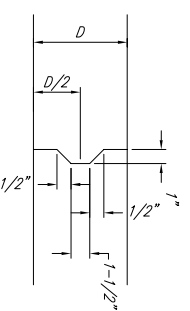


STANDARD WHEELCHAIR RAMP WITH DETECTABLE WARNING CONSTRUCTION DETAIL FOR STREETS WITH COMBINED CURB & GUTTER

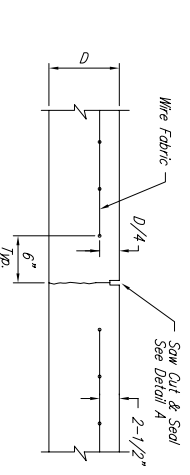


EXPANSION JOINT

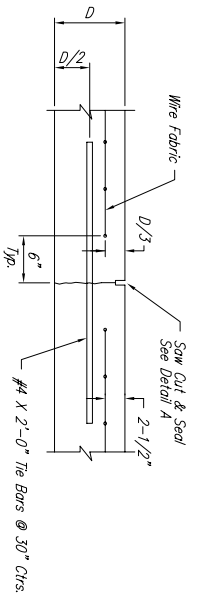
NOTE: Extra Thickness to be Subsidiary to Price of Square Yards Pavement



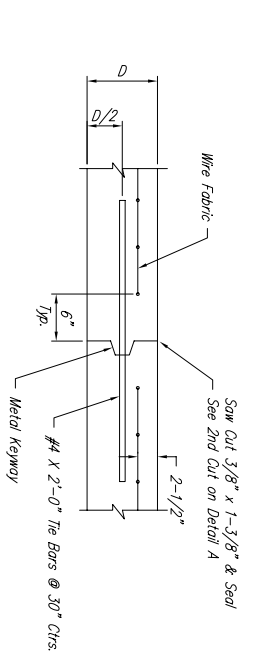
KEYWAY DETAIL



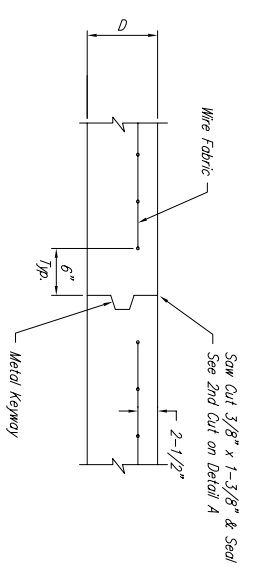
CONTRACTION JOINT DETAIL (C.J.)



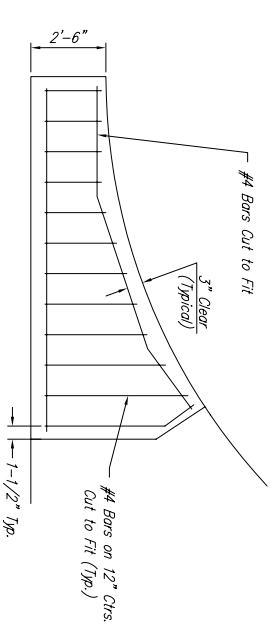
LONGITUDINAL JOINT DETAIL (L.J.)



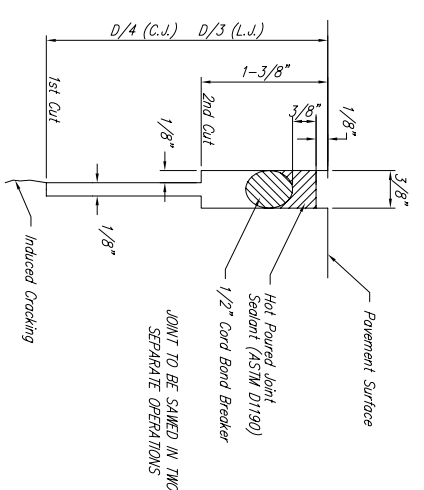
OPTIONAL LONGITUDINAL JOINT DETAIL (L.J.)



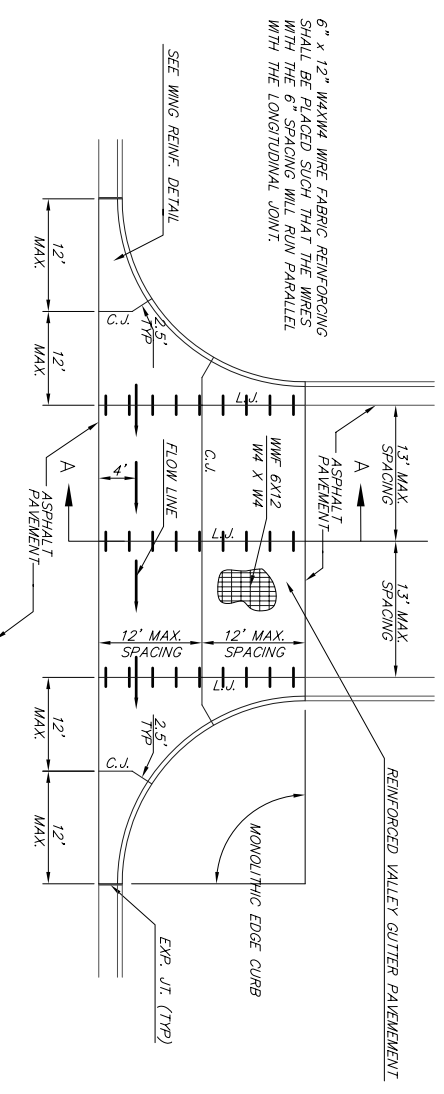
OPTIONAL CONTRACTION JOINT



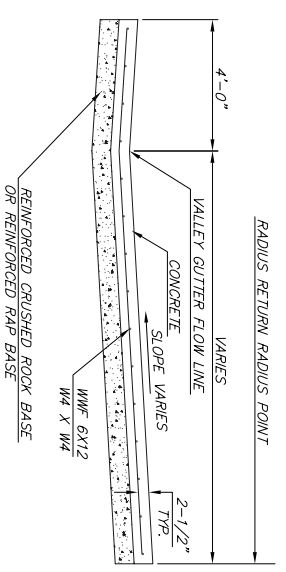
WING REINFORCING DETAIL



SAW JOINT DETAIL

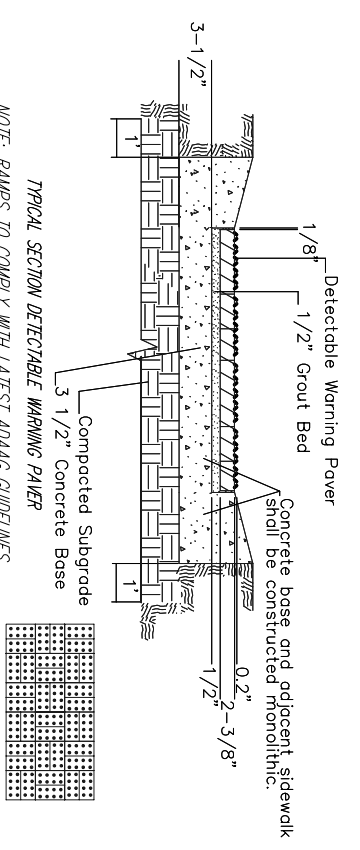


PLAN



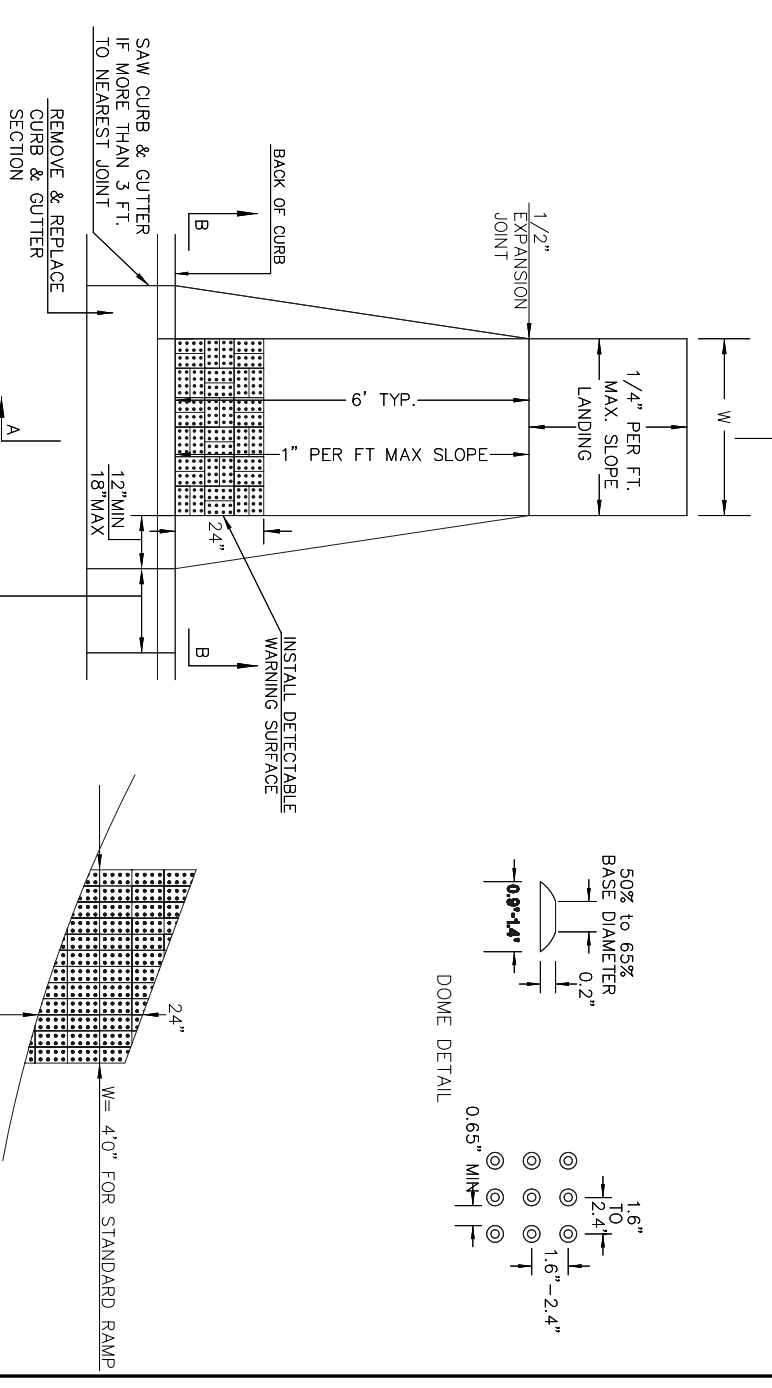
SECTION A-A

REINFORCED VALLEY GUTTER DETAIL

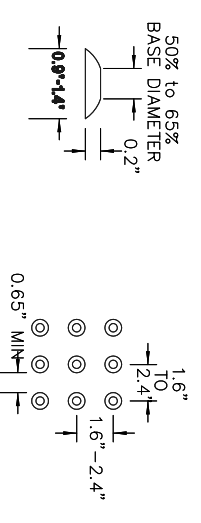


NOTE: RAMPS TO COMPLY WITH LATEST ADAAG GUIDELINES. PAVESTONE DETECTABLE WARNING PAVERS (OR AN APPROVED EQUAL) SHALL BE USED IN ALL WHEELCHAIR RAMPS. THE RED PAYER SHALL BE INSTALLED USING A BASKET WEAVE/PAROLET PATTERN. OTHER PATTERNS MAY BE USED WITH APPROVAL OF ENGINEER. SAND FILL JOINTS. ALIGN DOMES IN THE DIRECTION OF PEDESTRIAN TRAVEL.

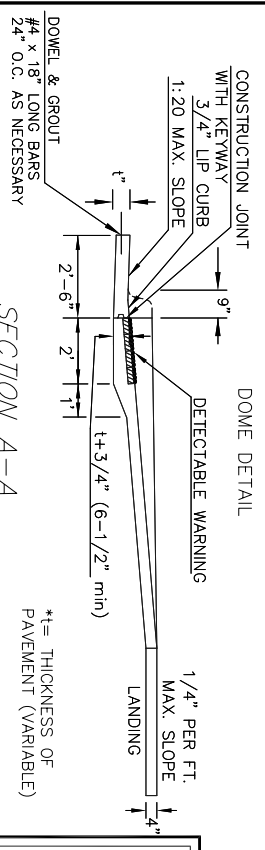
SECTION B-B



DOME DETAIL



NOTE: USE THIS BRICK PATTERN WHEN RAMP INTERSECTS A RADIUS. OTHER MINIMUM STANDARDS REMAIN THE SAME.



SECTION A-A

THE CITY OF WICHITA

VALLEY GUTTER DETAILS

WHEELCHAIR RAMP DETAILS

JAMES L. ARMOUR P.E. - CITY ENGINEER

PROJECT NUMBER: 472-94298

DATE: MAR 2006

SHEET 10 OF 20

CITY ENGINEER'S OFFICE
CITY HALL, SEVENTH FLOOR
WICHITA, KANSAS 67202
(316) 948-5114 FAX