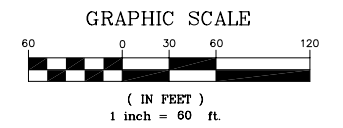
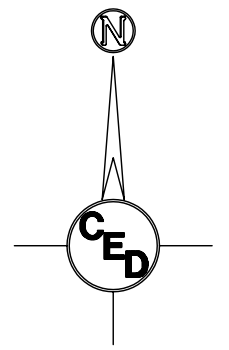
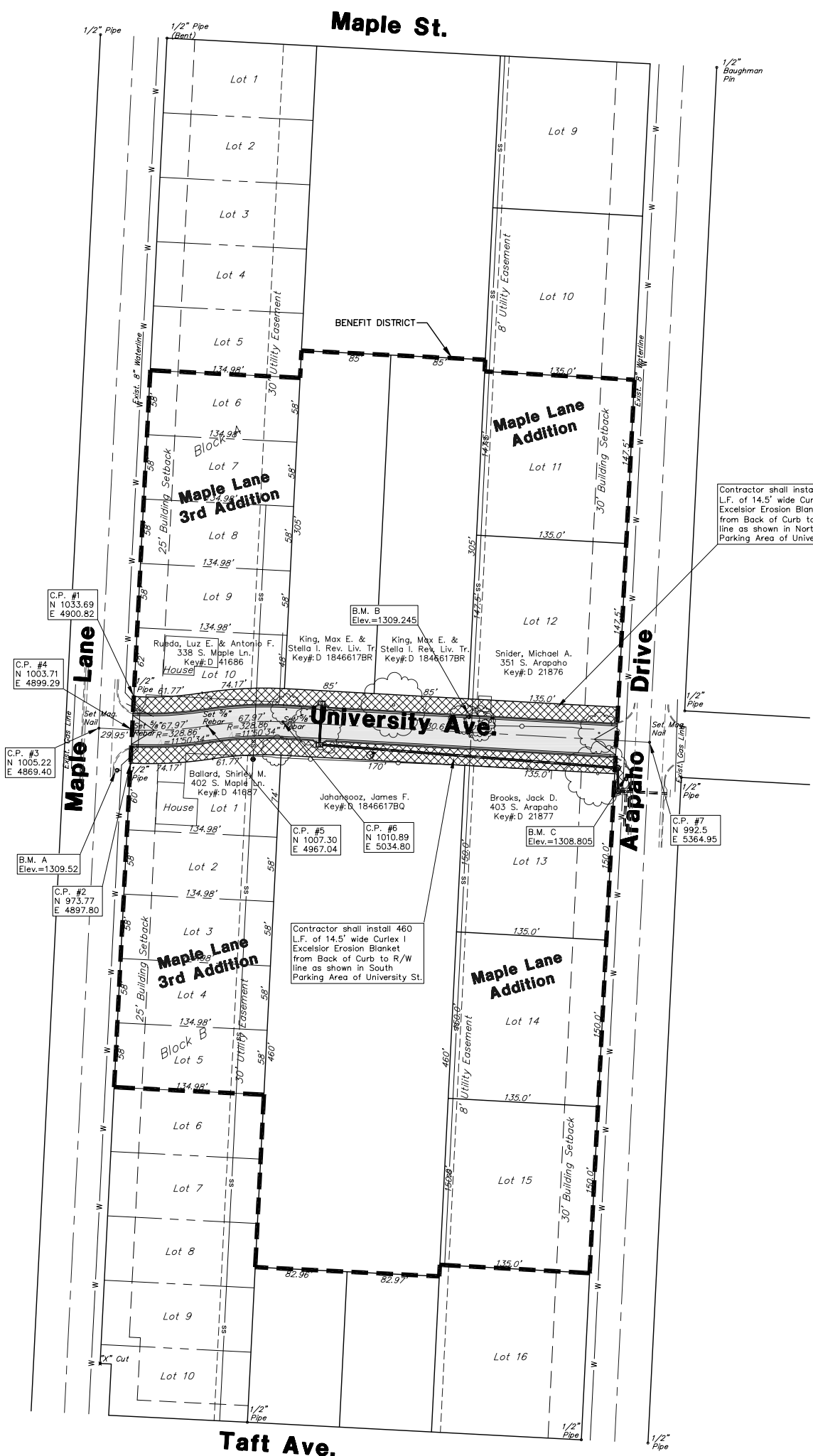


UTILITIES SHOWN REPRESENT THE BEST INFORMATION AVAILABLE FOR DESIGN. ADDITIONAL UTILITIES MAY BE PRESENT ON THIS PROJECT. THE CONTRACTOR SHALL BE RESPONSIBLE FOR DETERMINING THE EXACT LOCATION, DEPTH AND SIZE OF ALL UNDERGROUND UTILITIES PRIOR TO CONSTRUCTION. THE CONTRACTOR SHALL BE LIABLE FOR ANY DAMAGE CAUSED BY THE FAILURE TO DO SO.



- = Proposed 5" A.C. Pavement on 5" Crushed Rock Base
- = Proposed Concrete Curb & Gutter
- = Proposed Curlex I Excelsior Mat

- UTILITY LEGEND**
- = Catv Box
 - = Guard Post/Bollard
 - = Guy Anchor
 - = Guy Pole
 - = Light Pole
 - = Mailbox
 - = Gas Meter
 - = Power Pole
 - = Sign
 - = San. Sewer Manhole
 - = Storm Sewer Manhole
 - = Telephone Riser
 - = Water Meter
 - = Water Valve
 - = Water Well
 - = Fire Hydrant
 - = Coniferous Tree
 - = Deciduous Tree
 - = Overhead Electric
 - = Gas Line
 - = Water Line

HORIZONTAL CONTROL POINTS

C.P. NO. 1	N 1033.69 E 4900.82	1/2" Pipe, SW Cor. of Lot 10, Block A, Maple Lane 3rd Add.
C.P. NO. 2	N 973.77 E 4897.80	1/2" Pipe, NW Cor. of Lot 1, Block B, Maple Lane 3rd Add.
C.P. NO. 3	N 1005.22 E 4869.40	Mag. Nail @ Intersection of Maple Ln. & University St.
C.P. NO. 4	N 1003.71 E 4899.29	5/8" Rebar w/ GSS Cap, on E. R/W line of Maple Lane @ CL of University St.
C.P. NO. 5	N 1007.30 E 4967.04	5/8" Rebar w/ GSS Cap, on CL of University St. @ point of reverse curve.
C.P. NO. 6	N 1010.89 E 5034.80	5/8" Rebar w/ GSS Cap, @ End of Curve on CL of University St.
C.P. NO. 7	N 992.50 E 5364.95	Mag. Nail @ Intersection of Arapaho Dr. & University St.

PROJECT BENCHMARK LIST

B.M.	C.O.W. BM @ Maple & Maple Ln. ± 125' W. of E. Maple Lane 5' S. of sidewalk on N. side of Maple. Elevation=1310.03
B.M. A	N. Bolt on FH @ SW Quad University & Maple Lane. Elevation=1309.52
B.M. B	RR Spike in PP on N. side of University ± 160' W of E. of Arapaho. Elevation=1309.245
B.M. C	NW Bolt on FH @ SW Quad of University & Arapaho. Elevation=1308.805

SURVEY DISCLAIMER:
 TOPOGRAPHIC SURVEY USED IN PREPARING PLANS WAS PROVIDED BY GARDNER SURVEYING SERVICE, (620) 665-7032, 423 WEST FIRST AVE., HUTCHINSON, KS. ENGINEER DOES NOT GUARANTEE SURVEY ELEVATIONS FOR ACCURACY. CONTRACTOR SHALL VERIFY ELEVATIONS AND NOTIFY ENGINEER OF ANY DISCREPANCIES.

CURB & GUTTER STREET IMPROVEMENTS FOR
UNIVERSITY STREET
 BETWEEN MAPLE LANE AND ARAPAHO DR., WICHITA, KS
 CED PROJ. NO.: 20051340

CERTIFIED ENGINEERING DESIGN, P.A.

810 WEST DOUGLAS, SUITE C
 WICHITA, KANSAS 67203
 PH.(316)262-8808 FAX.(316)262-1669

DESIGNED: HDF	SCALE: 1"=60'	SHEET
DRAWN: CKW	DATE: 3/06	2
CHECKED: HDF	CED FILE: University-Base	TOTAL 10