

UTILITIES SHOWN REPRESENT THE BEST INFORMATION AVAILABLE FOR DESIGN. ADDITIONAL UTILITIES MAY BE PRESENT ON THIS PROJECT. THE CONTRACTOR SHALL BE RESPONSIBLE FOR DETERMINING THE EXACT LOCATION, DEPTH AND SIZE OF ALL UNDERGROUND UTILITIES PRIOR TO CONSTRUCTION. THE CONTRACTOR SHALL BE LIABLE FOR ANY DAMAGE CAUSED BY THE FAILURE TO DO SO.

**Landscaping General Note:** The Contractor shall exercise care in removing existing landscaping material. All material required for removal shall be salvaged and stockpiled, when possible, for the owner. This includes but is not limited to timbers, posts, rocks, stones, and fencing. Any such material not within right-of-way limits and damaged shall be replaced at the contractor's expense. (Subsidiary to "Site Clearing & Restoration".)

Contractor Shall Salvage & Remove Approx. 108 L.F. of Wooden Privacy Fence & Stockpile for Owner.

Sta. 1+40.87, CAUTION!!!  
8" Sanitary Sewer Main.  
Approx. FL=1298.6  
Approx. Depth=9.07'. (FL & Location per City Records)

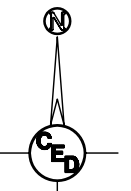
Contractor Shall Remove & Dispose of 153 S.Y. of Brush Pile. (Subsidiary to "Site Clearing & Restoration".)

Sta. 3+35.73, CAUTION!!!  
8" Sanitary Sewer Main.  
Approx. FL=1299.5  
Approx. Depth=8.5'. (FL & Location per City Records)

Contractor Shall Remove Approx. 100 L.F. of Wood Split Rail Fence & Stockpile for Owner.

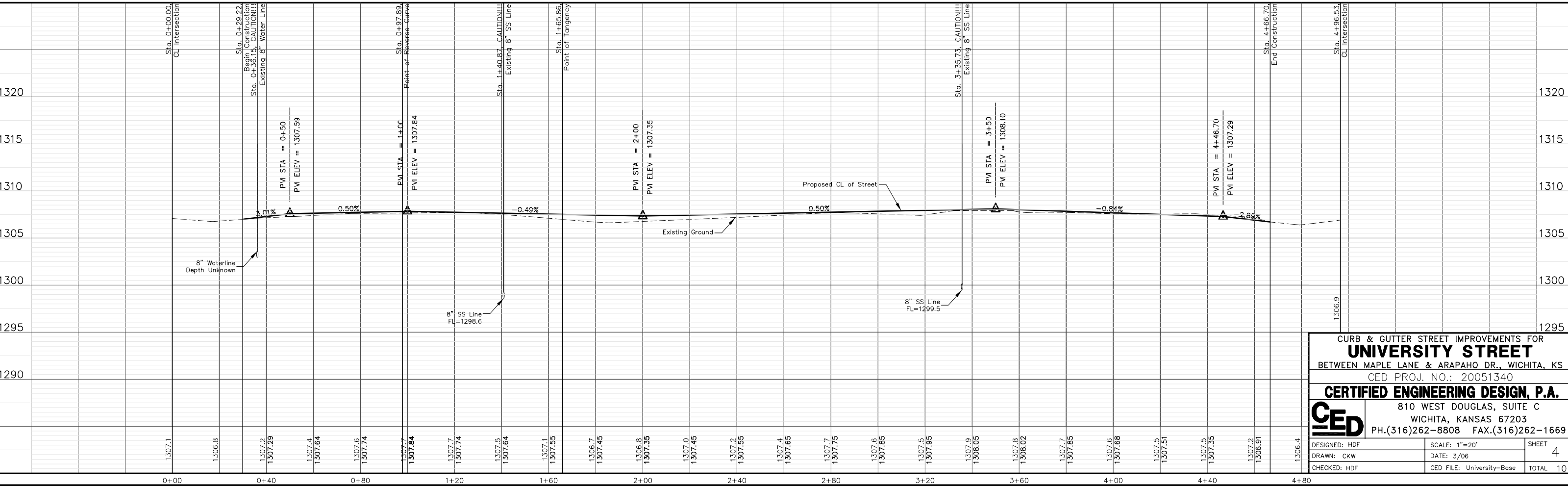
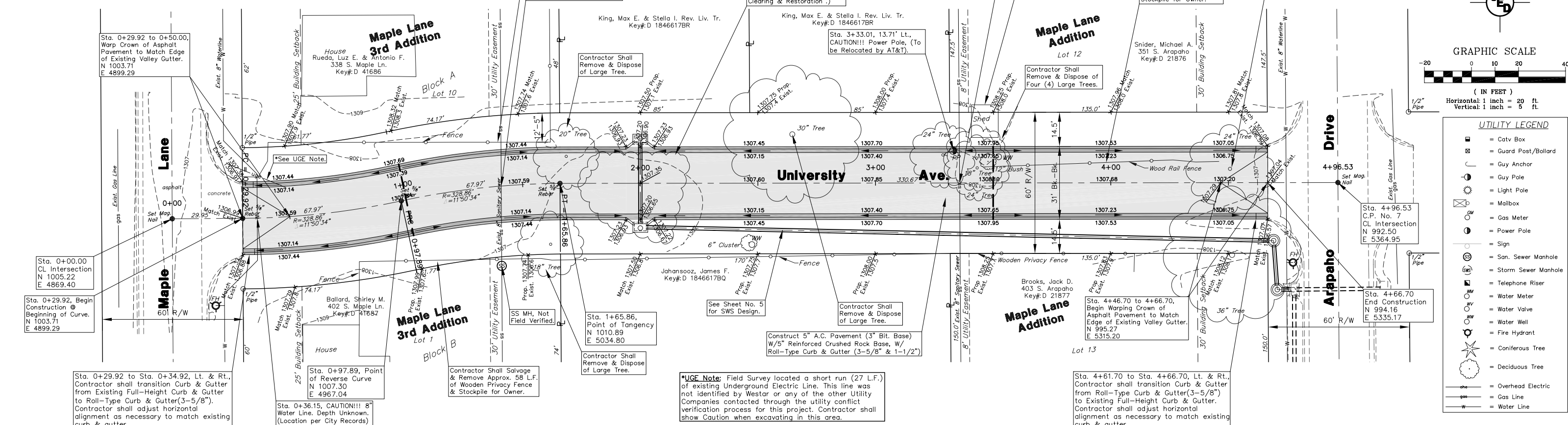
Contractor Shall Remove & Dispose of Large Tree.

Proposed 5" A.C. Pavement on 5" Crushed Rock Base  
Proposed Concrete Curb & Gutter, Valley Gutter



GRAPHIC SCALE  
(IN FEET)  
Horizontal: 1 inch = 20 ft.  
Vertical: 1 inch = 5 ft.

- UTILITY LEGEND**
- = Catv Box
  - = Guard Post/Bollard
  - = Guy Anchor
  - = Guy Pole
  - = Light Pole
  - = Mailbox
  - = Gas Meter
  - = Power Pole
  - = Sign
  - = San. Sewer Manhole
  - = Storm Sewer Manhole
  - = Telephone Riser
  - = Water Meter
  - = Water Valve
  - = Water Well
  - = Fire Hydrant
  - = Coniferous Tree
  - = Deciduous Tree
  - = Overhead Electric
  - = Gas Line
  - = Water Line



**CURB & GUTTER STREET IMPROVEMENTS FOR**  
**UNIVERSITY STREET**  
BETWEEN MAPLE LANE & ARAPAHO DR., WICHITA, KS  
CED PROJ. NO.: 20051340

**CERTIFIED ENGINEERING DESIGN, P.A.**  
810 WEST DOUGLAS, SUITE C  
WICHITA, KANSAS 67203  
PH.(316)262-8808 FAX.(316)262-1669

DESIGNED: HDF	SCALE: 1"=20'	SHEET 4
DRAWN: CKW	DATE: 3/06	
CHECKED: HDF	CED FILE: University-Base	TOTAL 10