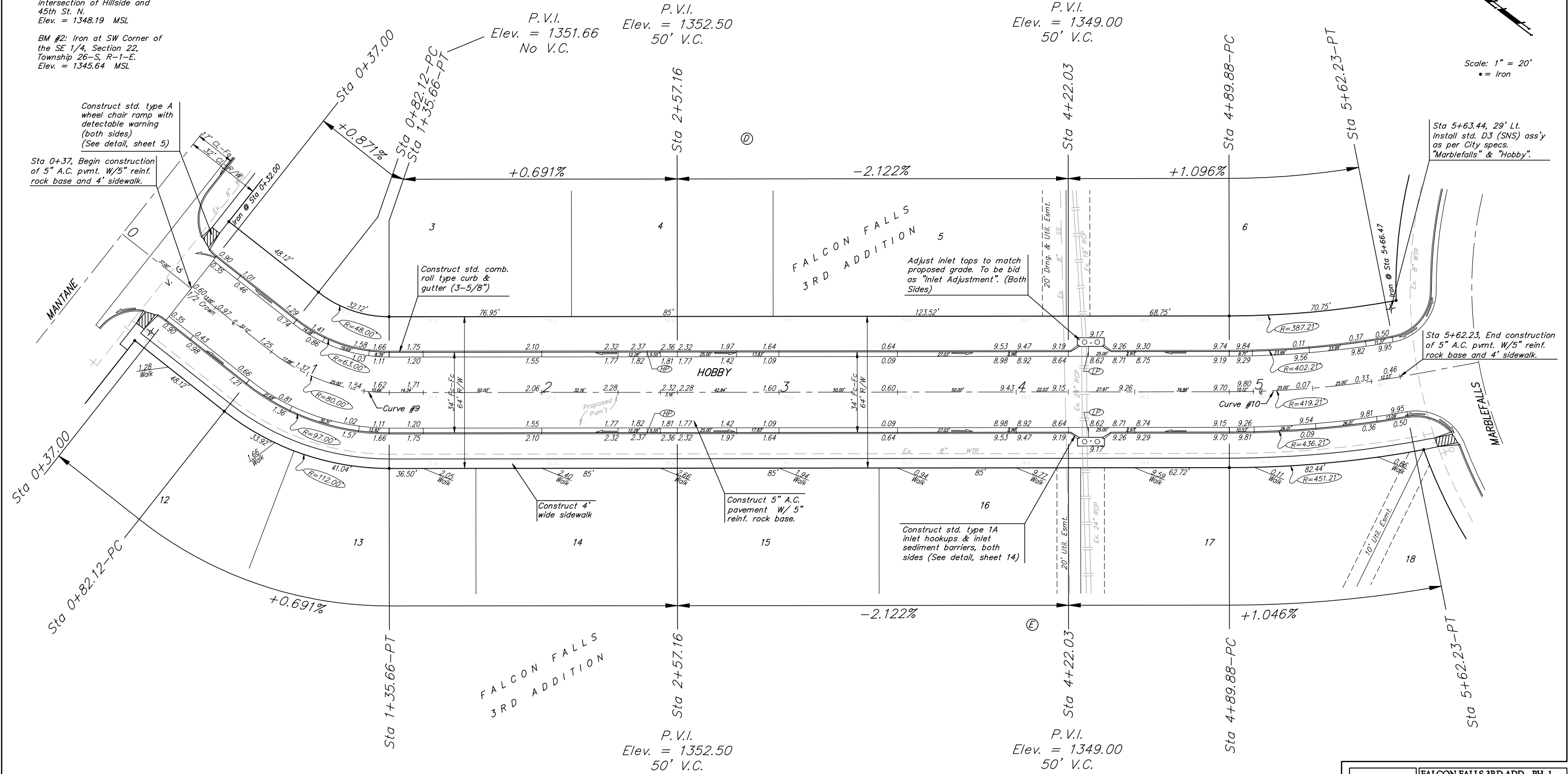


BENCHMARKS:

BM #1: "□" on west end of median approx. 1020' west of intersection of Hillside and 45th St. N.
Elev. = 1348.19 MSL

BM #2: Iron at SW Corner of the SE 1/4, Section 22, Township 26-S, R-1-E.
Elev. = 1345.64 MSL

Scale: 1" = 20'
• = Iron



** See Sheet 12 for Curve Tables

NOTE: ROLL TYPE CURB & GUTTER TO BE CONSTRUCTED ON THE PAVEMENT SHOWN ON THIS SHEET. TOP OF CURB ELEVATIONS ARE GIVEN FOR FULL HEIGHT CURB.

Baughman		FALCON FALLS 3RD ADD. - PH. 1	
		HOBBY	
Baughman Company, P.A. 315 8th St. Wichita, KS 67211 P 316262-7211 F 316262-0149			
ENGINEERING SURVEYING PLANNING LANDSCAPE ARCHITECTURE			
PROJECT NUMBER 472-84624	DESIGN ITW	DRAWN JEB	
REVISIONS:	APPROVED ABC	DATE 08/06	
	SCALE Noted		
	SHEET		10 OF 32
E:\Falcon Falls 3rd\SWS & STR\Str1.dwg		05-12-B445	