

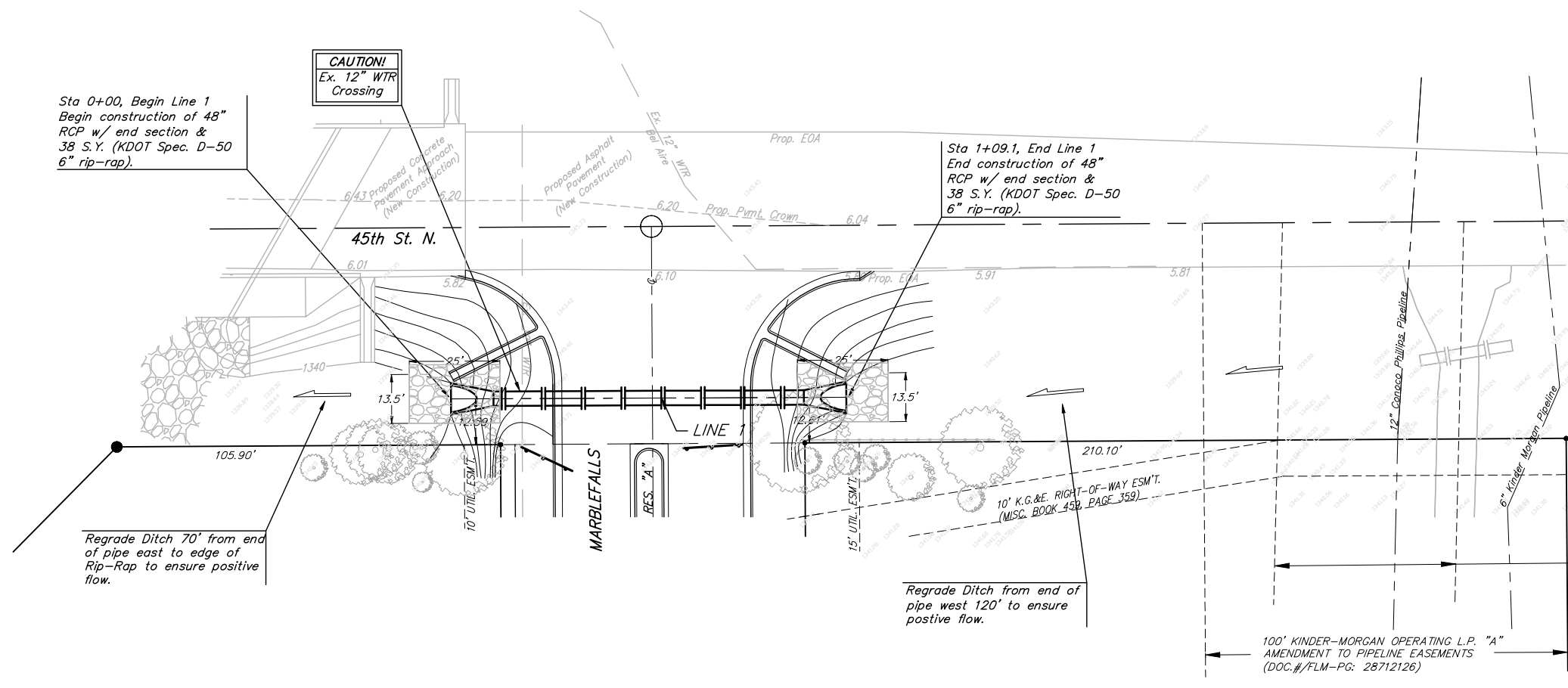
**BENCHMARKS:**

BM #1: "□" on west end of median approx. 1020' west of intersection of Hillside and 45th St. N.  
Elev. = 1348.19 MSL

BM #2: Iron at SW Corner of the SE 1/4, Section 22, Township 26-S, R-1-E.  
Elev. = 1345.64 MSL

Sta 0+00, Begin Line 1  
Begin construction of 48" RCP w/ end section & 38 S.Y. (KDOT Spec. D-50 6" rip-rap).

Sta 1+09.1, End Line 1  
End construction of 48" RCP w/ end section & 38 S.Y. (KDOT Spec. D-50 6" rip-rap).



Scale: 1" = 20' Horizontal  
1" = 5' Vertical  
● = Iron

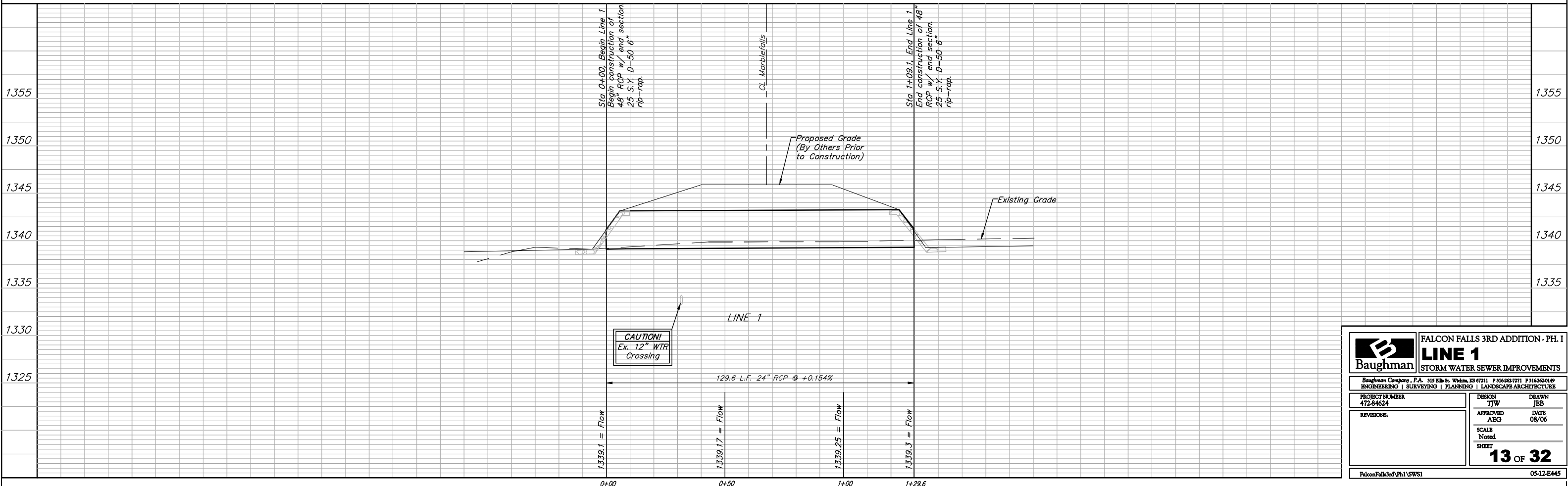
Remove trees only as necessary for storm water sewer construction and only with permission of Developer or Baughman Co. Cost of removal to be incidental to lump sum bid item "Site Clearing & Restoration".

Regrade Ditch 70' from end of pipe east to edge of Rip-Rap to ensure positive flow.

Regrade Ditch from end of pipe west 120' to ensure positive flow.

100' KINDER-MORGAN OPERATING L.P. "A" AMENDMENT TO PIPELINE EASEMENTS (DOC.#/FLM-PG. 28712126)

50' PHILLIPS PIPE LINE CO. (NOW CONOCOPHILLIPS PIPE LINE CO.) RIGHT-OF-WAY EASEMENT. (FILM 1884, PAGES 847, 850, 853, 856, 859, 862, 864, 867, 870, AND 873).



		<b>FALCON FALLS 3RD ADDITION - PH. I</b> <b>LINE 1</b> <b>STORM WATER SEWER IMPROVEMENTS</b>	
		<small>Baughman Company, P.A. 315 Ellis St. Wichita, KS 67211 P 316-262-7771 F 316-262-0149  ENGINEERING   SURVEYING   PLANNING   LANDSCAPE ARCHITECTURE</small>	
PROJECT NUMBER <b>472-84624</b>	DESIGN <b>TJW</b>	DRAWN <b>JEB</b>	DATE <b>08/06</b>
REVISIONS	APPROVED <b>ABG</b>	SCALE Noted <b>SHEET</b>	
		<b>13 OF 32</b>	
<small>Falcon Falls 3rd Ph I SWS1</small>		<small>05-12-E445</small>	