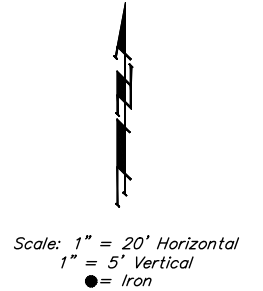
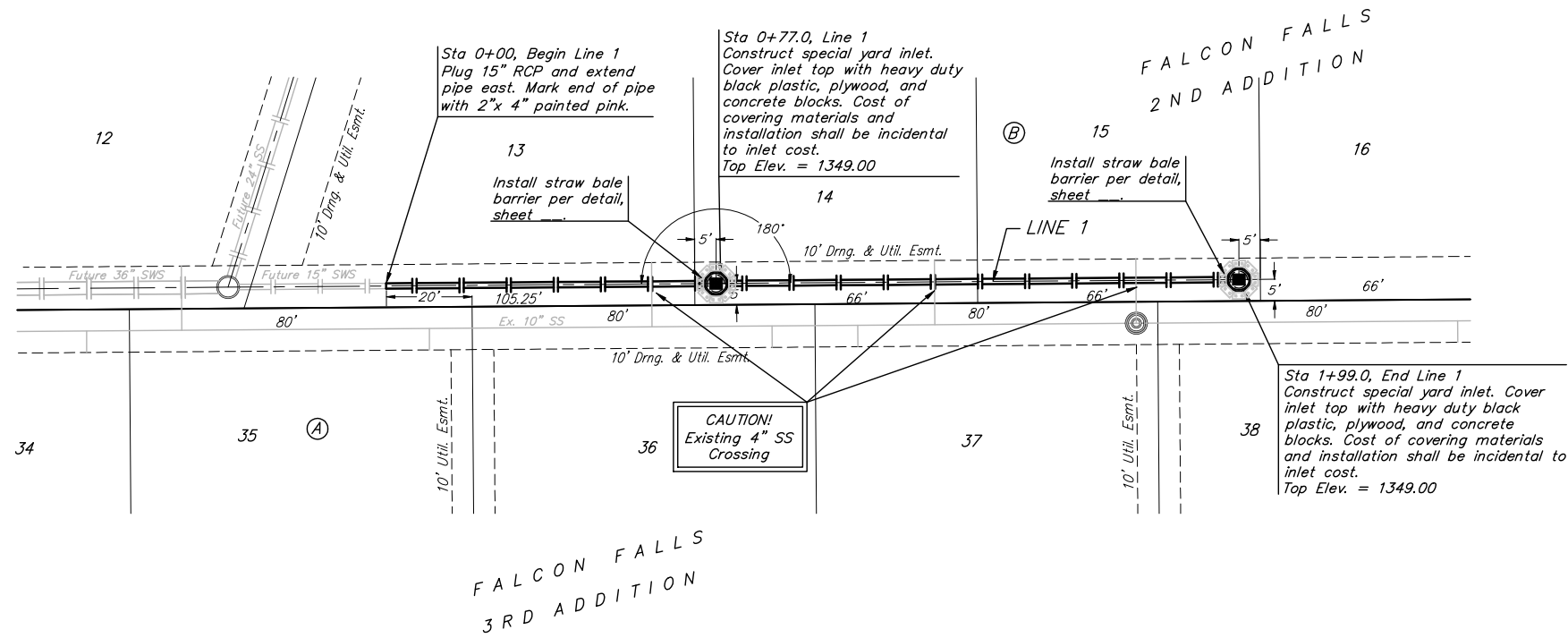


BENCHMARKS:

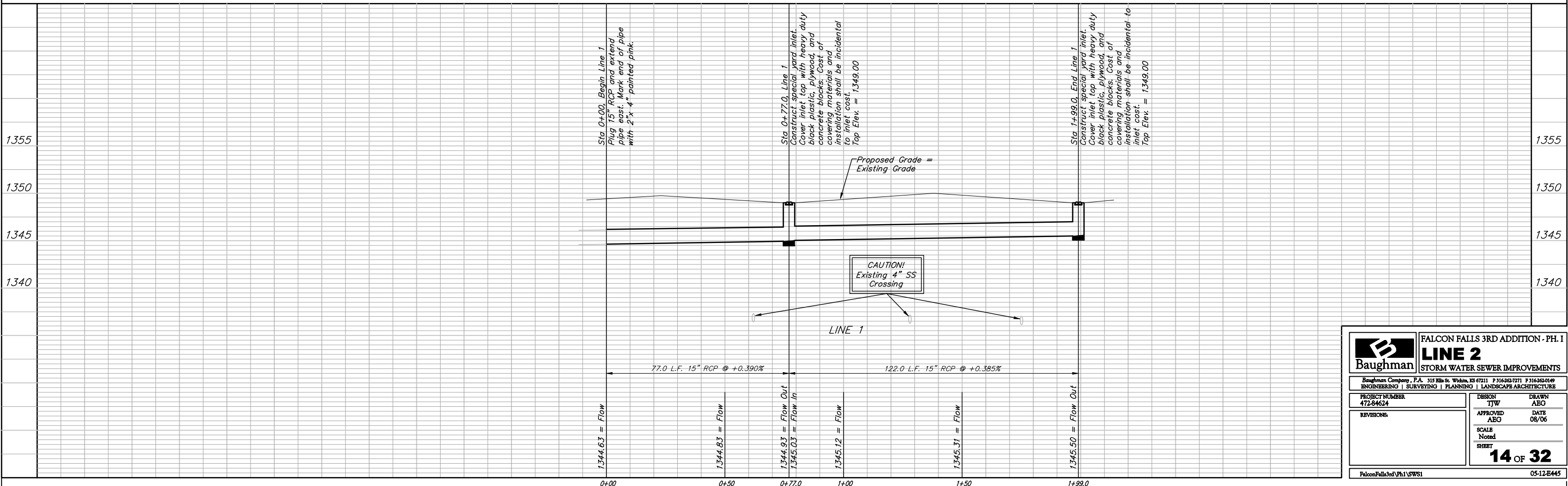
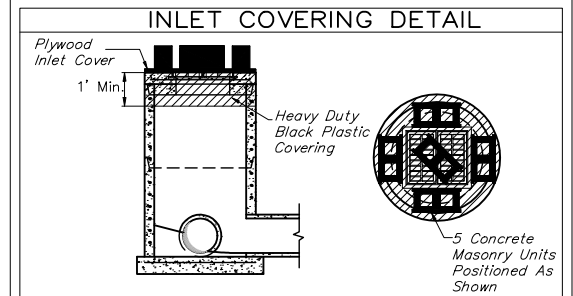
BM #1: "□" on west end of median approx. 1020' west of intersection of Hillside and 45th St. N.
Elev. = 1348.19 MSL

BM #2: Iron at SW Corner of the SE 1/4, Section 22, Township 26-S, R-1-E.
Elev. = 1345.64 MSL

See Easement Grading Plan for Ditching Location and Details.



Remove trees only as necessary for storm water sewer construction and only with permission of Developer or Baughman Co. Cost of removal to be incidental to lump sum bid item "Site Clearing & Restoration".



		FALCON FALLS 3RD ADDITION - PH. I LINE 2 STORM WATER SEWER IMPROVEMENTS	
<small>Baughman Company, P.A. 315 Elm St. Wichita, KS 67211 P 316262-7771 F 316262-0149 ENGINEERING SURVEYING PLANNING LANDSCAPE ARCHITECTURE</small>			
PROJECT NUMBER 472-84624	DESIGN TJW	DRAWN ABG	DATE 08/06
REVISIONS	APPROVED ABG	SCALE Noted	SHEET 14 OF 32
<small>Falcon Falls 3rd Ph I SWS1</small>		<small>05-12-B445</small>	