

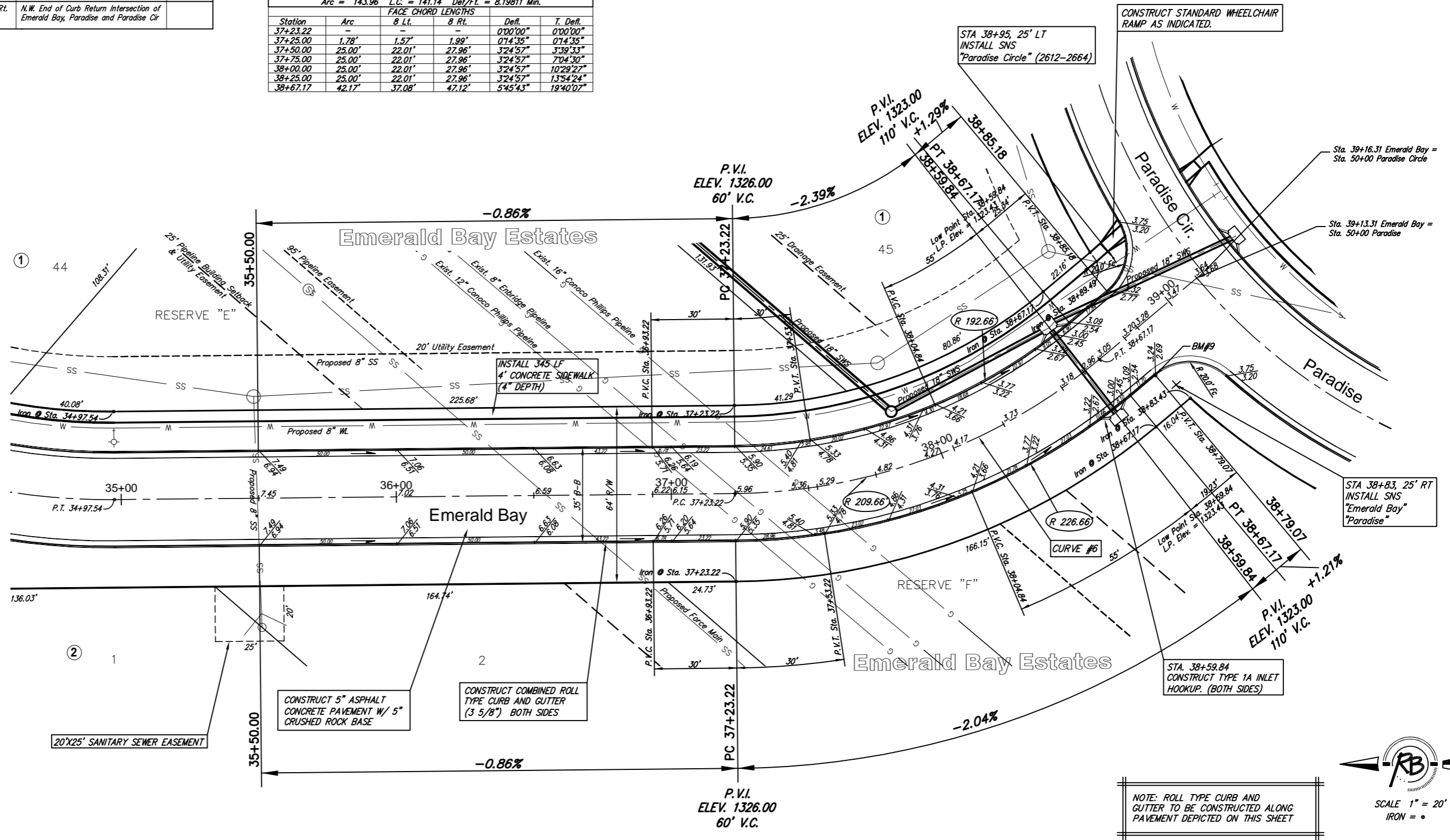
Subdivision Bench Marks

No.	Street and Station	From CL	Description	Elevation
9	Emerald Bay, Sta. 38+79.07	17.50' Rt.	N.W. End of Curb Return Intersection of Emerald Bay, Paradise and Paradise Cir	

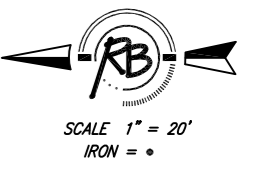
CURVE #6

Curve Data Based on Centerline
 Rad. = 209.66' Delta = 39°20'24" Tangent = 74.95'
 Arc = 143.96' L.C. = 141.14' Def/Ft. = 8.19811 Min.

Station	FACE CHORD LENGTHS				
	Arc	8 Lt.	8 Rt.	Defl.	T. Defl.
37+23.22	-	-	-	0°00'00"	0°00'00"
37+25.00	1.78'	1.57'	1.99'	0°14'35"	0°14'35"
37+50.00	25.00'	22.01'	27.96'	3°24'57"	3°39'33"
37+75.00	25.00'	22.01'	27.96'	3°24'57"	7°04'30"
38+00.00	25.00'	22.01'	27.96'	3°24'57"	10°29'27"
38+25.00	25.00'	22.01'	27.96'	3°24'57"	13°54'24"
38+67.17	42.17'	37.08'	47.12'	5°45'43"	19°40'07"



NOTE: ROLL TYPE CURB AND GUTTER TO BE CONSTRUCTED ALONG PAVEMENT DEPICTED ON THIS SHEET



Emerald Bay Estates Addition - Phase 1, Paving Improvements
 Emerald Bay
 WICHITA, KANSAS

<p>Ruggles & Bohm, P.A. Engineering, Surveying, Land Planning 924 North Main Wichita, Kansas 67203 www.rbkansas.com</p>	<p>(316) 264-8008 (316) 264-4621 fax E-mail: info@rbkansas.com</p>	DESIGN	AML	SHEET
		DRAWN	MLP	
DRAWING FILE		PROJECT NUMBER	DATE	OF
paving {Emerald Bay}		472-84364	Jan. 17, 2006	54