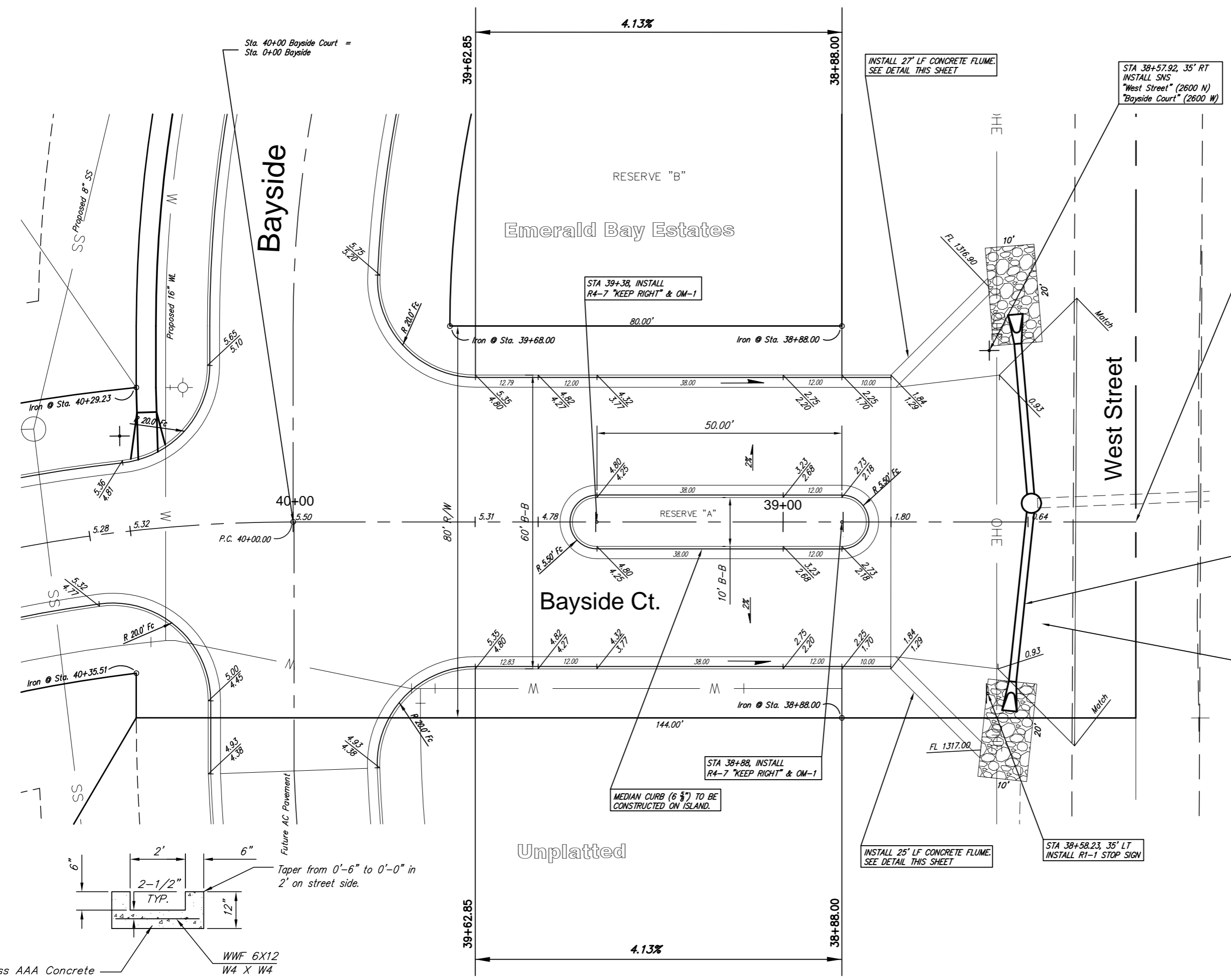




SCALE 1" = 10'
IRON = •



INSTALL 27' LF CONCRETE FLUME.
SEE DETAIL THIS SHEET

STA 38+57.92, 35' RT
INSTALL SNS
"West Street" (2600 N)
"Bayside Court" (2600 W)

STA 39+38, INSTALL
R4-7 "KEEP RIGHT" & OM-1

STORM SEWER IMPROVEMENTS
(BY OTHERS)

CONSTRUCT 5" A.C. TEMPORARY HOOKUP
(5" REINFORCED CRUSHED ROCK BASE) AS INDICATED.

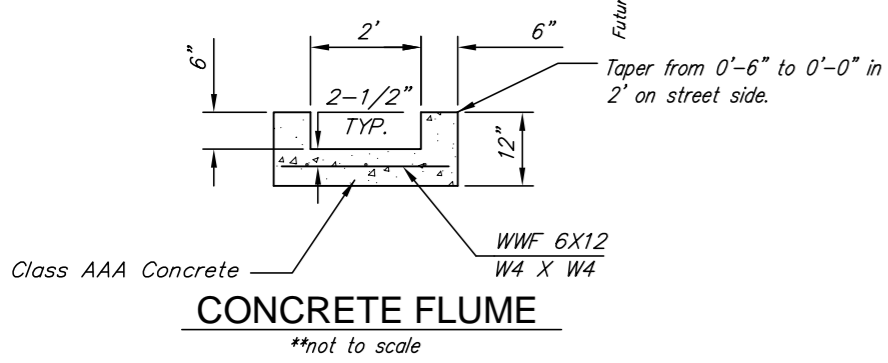
STA 38+88, INSTALL
R4-7 "KEEP RIGHT" & OM-1

MEDIAN CURB (6 3/8") TO BE
CONSTRUCTED ON ISLAND.

INSTALL 25' LF CONCRETE FLUME.
SEE DETAIL THIS SHEET

STA 38+58.23, 35' LT
INSTALL R1-1 STOP SIGN

NOTE: ROLL TYPE CURB AND
GUTTER TO BE CONSTRUCTED ALONG
PAVEMENT DEPICTED ON THIS SHEET



CONCRETE FLUME
**not to scale

Emerald Bay Estates Addition - Phase 1, Paving Improvements
Bayside Court - West Street
WICHITA, KANSAS

Ruggles & Bohm, P.A.
Engineering, Surveying, Land Planning

924 North Main
Wichita, Kansas 67203
www.rbkansas.com

(316) 264-8008
(316) 264-4621 fax
E-mail: info@rbkansas.com

DESIGN: AML	DATE: Jan. 17, 2006
DRAWN: MLP	PROJECT NUMBER: 472-84364
REVIEW: UTILITY	DRAWING FILE: paving {Bayside Cir-West}
DATE: Jan. 17, 2006	SCALE: 1" = 10'

14 of 54