

STA. 0+00 LINE 1
INSTALL 15" END SECTION
FL OUT = 1310.00
INSTALL 17 SY LIGHT
STONE RIP-RAP AS INDICATED.
SEE RIP-RAP DETAIL THIS SHEET.

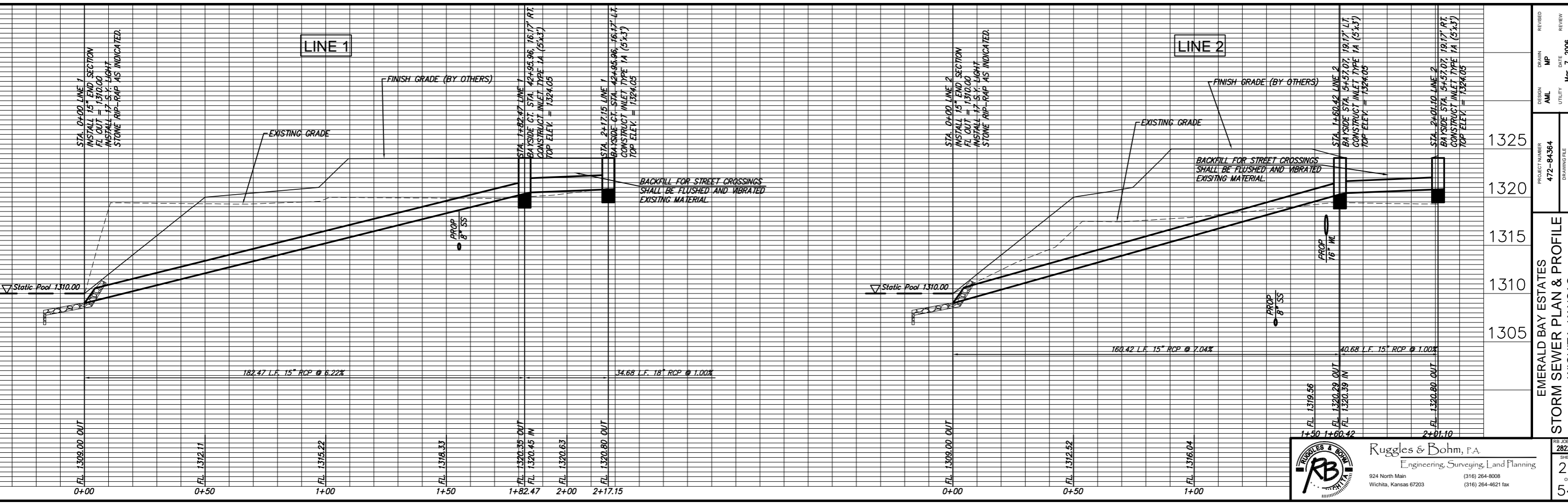
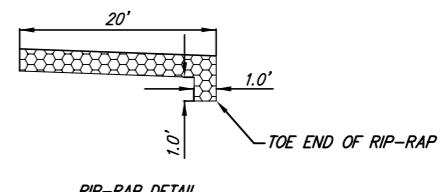
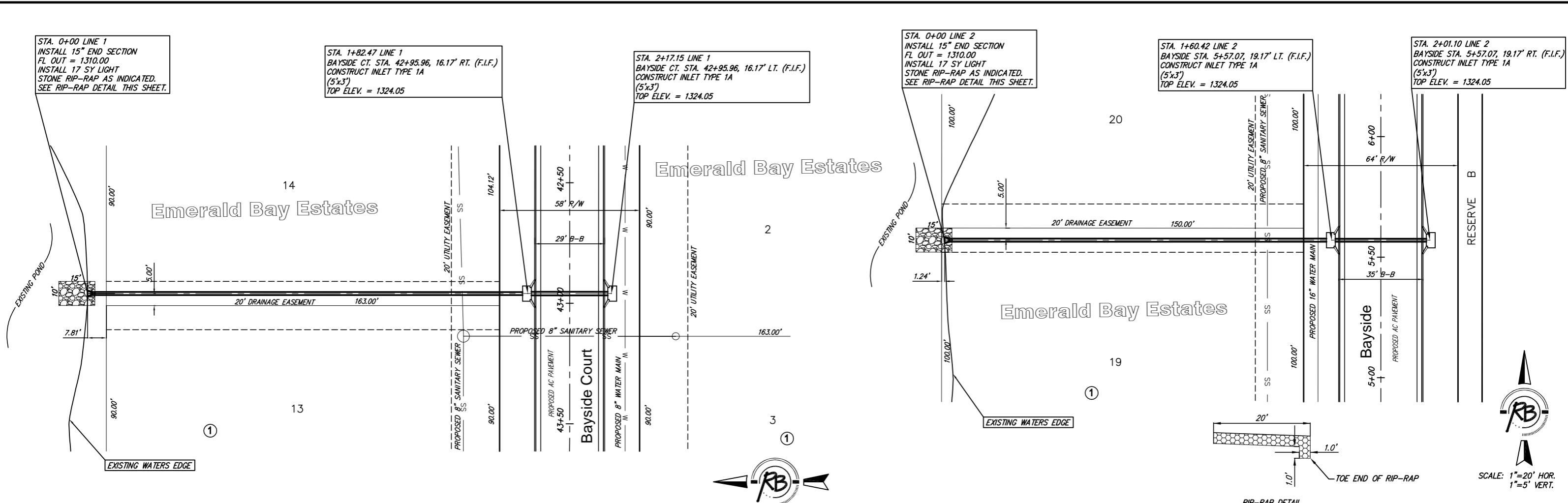
STA. 1+82.47 LINE 1
BAYSIDE CT. STA. 42+95.96, 16.17' RT. (F.I.F.)
CONSTRUCT INLET TYPE 1A
(5'x3')
TOP ELEV. = 1324.05

STA. 2+17.15 LINE 1
BAYSIDE CT. STA. 42+95.96, 16.17' LT. (F.I.F.)
CONSTRUCT INLET TYPE 1A
(5'x3')
TOP ELEV. = 1324.05

STA. 0+00 LINE 2
INSTALL 15" END SECTION
FL OUT = 1310.00
INSTALL 17 SY LIGHT
STONE RIP-RAP AS INDICATED.
SEE RIP-RAP DETAIL THIS SHEET.

STA. 1+60.42 LINE 2
BAYSIDE STA. 5+57.07, 19.17' LT. (F.I.F.)
CONSTRUCT INLET TYPE 1A
(5'x3')
TOP ELEV. = 1324.05

STA. 2+01.10 LINE 2
BAYSIDE STA. 5+57.07, 19.17' RT. (F.I.F.)
CONSTRUCT INLET TYPE 1A
(5'x3')
TOP ELEV. = 1324.05



DESIGN	AML	DATE	Mar. 7, 2006
DRAWN	MP	DATE	
REVIEW		DATE	
PROJECT NUMBER	472-84364	DRAWING FILE	SWS PLANS [SWS 1&2]
EMERALD BAY ESTATES			
STORM SEWER PLAN & PROFILE			
RB JOB	2822E	SHE	23
Ruggles & Bohm, P.A. Engineering, Surveying, Land Planning 924 North Main Wichita, Kansas 67203 (316) 264-8008 (316) 264-4821 fax			of 54