

STREET IMPROVEMENTS
Michelle from the north line of Tara Falls 3rd Addition to a point 15 feet north
south line of Tara Falls 3rd Addition and including a temporary
turnaround at the south end of Tara Falls 3rd Addition.

TARA FALLS 3RD ADDITION

PROJECT NO. 472-84425

OCA NO. 766105

BENCH MARKS

BENCHMARK #1 SRB BRASS DISC 55.45' E. & 5.13' S. OF THE N.W.
COR., SW1/4, SEC. 35, T27S, R2E.
ELEV.=1348.35 (NGVD) = 160.95 (CITY DATUM)

GENERAL NOTES

Contractor will be required to provide a minimum advance notice of twenty-four (24) hours to utility companies prior to starting any excavation as follows:

Kansas One-Call 687-2470

The Contractor must notify the following in case of an emergency:

Cox Communications	262-0661
Kansas Gas Service	383-8600
Westar	383-8600
Aquila	1-800-303-0357
SBC	1-800-286-8313
City of Wichita Water Department	262-6000
City of Wichita Sewer Maintenance	262-6000

A saw cut of at least one-half the depth of existing surface courses or one-fourth the depth of existing total pavement thickness shall be provided at locations where proposed construction abuts an existing surface course or pavement for which partial removal of that surface or pavement is required, except when such saw cuts are within three (3) feet of an existing joint the limits of removal shall be extended to the existing joint. Such saw cuts will not be paid for directly and this cost shall be considered as subsidiary to the removal of the surface or pavement.

Rubble from the removal of miscellaneous structures and excess excavation which is to be wasted shall be disposed of on sites to be provided by the Contractor. These sites shall be approved by the Engineer as to suitability, appearance and site location. Locations that, in the opinion of the Engineer, will leave an unsightly appearance will not be approved.

All disposal sites must be approved by the Kansas Department of Health and Environment. Material either stockpiled or disposed of in a flood plain would require a Kansas State Board of Agriculture permit. Any material dumped in waters of the United States or wetlands is subject to U.S. Corps permitting regulations. Any material buried or stockpiled beyond approved of Engineers construction limits would require additional archeological investigations unless buried in a previously approved borrow location.

The Contractor shall be responsible for preserving property irons. The Contractor will be required to re-establish any property irons which are damaged or destroyed by his construction operations. Such irons shall be re-established by a licensed land surveyor in accordance with state laws.

The Contractor shall give all property owners and/or tenants of developed property directly abutting the construction of this project a minimum of ten (10) days advance notice prior to start of construction.

The Contractor shall adjust Water Valve Boxes and Fire Hydrants as directed by the Engineer at the price bid for said adjustments. The Water Department shall field locate water valves one time during construction when requested by the Contractor. It shall be the Contractor's responsibility to preserve such field locations during the construction process. Water valves, water valve boxes or fire hydrants damaged during construction shall be repaired by the Contractor at his own expense.

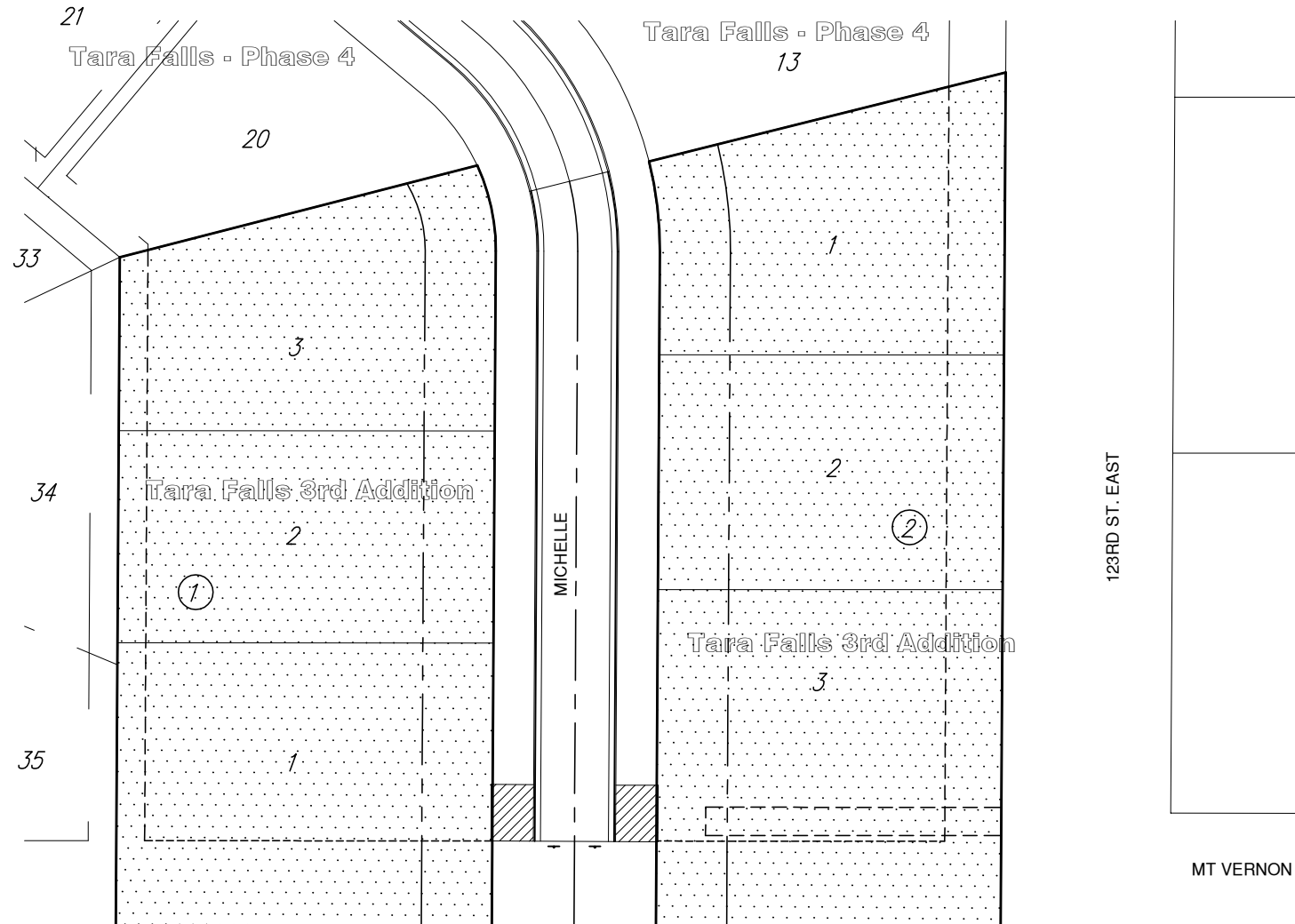
Underground utility service lines and overhead utility pole lines are to be adjusted as necessary by others prior to construction unless the plans specifically call for their adjustment by the Contractor or unless the plans specifically identify a utility to be adjusted by its owner during construction. Existing utilities and their location, as shown on the plans, represent the best information obtainable for design. Location information has been obtained from the various utility companies and is either from company record drawings or company-provided field locations. The Contractor will be required to work around existing utilities within the right-of-way which do not conflict with proposed construction.

The Contractor shall seed, fertilize and mulch all disturbed areas per City specifications upon completion of construction.

Subdivision Bench Marks shall be "Flat Survey Markers No. 8134-08 3" top diameter" provided by Kansas Blue Print Co., Inc. Bench mark installation cost to be subsidiary to curb & gutter.

Paving contractor will ensure that all water valves within the limits of the project are accessible and "ON" upon completion of the project.

Borrow Excavation (Contractor Furnished) may be obtained from stockpiles located in Casa Bella Addition. Contractor shall coordinate with Gene Vitarelli at 807-6330.



Unplatted



IMPROVEMENT DISTRICT

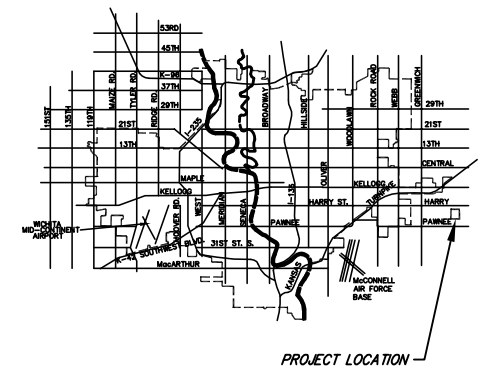
PROJECT LENGTH = 234 L.F.
EXCAVATION = 31 C.Y.

INDEX

1. TITLE SHEET
2. TYPICAL 29' PVMT. SECTION
3. MICHELLE
4. EASEMENT GRADING PLAN
5. EROSION CONTROL PLAN
- 6.-8. INLET PROTECTION DETAILS
9. SIGNING DETAILS
- 10.-11. CROSS SECTIONS
12. FINAL PLAT

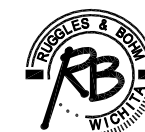


Scale: 1" = 30'



VICINITY MAP

CITY OF WICHITA, KANSAS
JAMES ARMOUR, P.E. - CITY ENGINEER



Ruggles & Bohm, P.A.
Engineering, Surveying, Land Planning
924 North Main (316) 264-8008
Wichita, Kansas 67203 (316) 264-4621 fax
www.rbkansas.com E-mail: info@rbkansas.com