



CONSTRUCT VALLEY GUTTER PAVEMENT.
7" REINFORCED CONCRETE W/ 5"
CRUSHED ROCK BASE AND MONOLITHIC
EDGE CURB (3 5/8")

REMOVE EXISTING WALK

CONSTRUCT W.C. RAMP WITH DETECTABLE
WARNING PER CITY SPECS.

P.V.I.
ELEV. 1271.70
NO V.C.

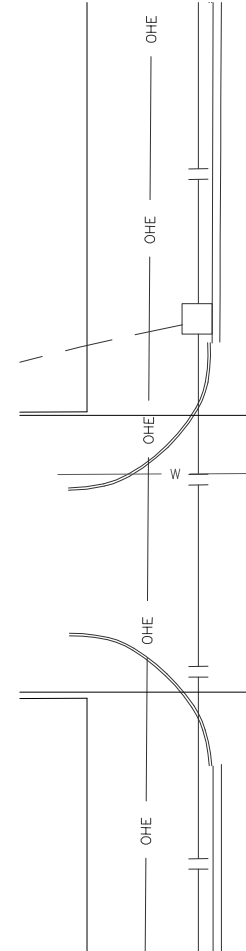
STA. 0+54, 20' LT.
INSTALL R1-1

SYCAMORE

POND

CONSTRUCT 5" ASPHALT
CONCRETE PAVEMENT W/ 5"
CRUSHED ROCK BASE

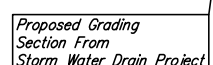
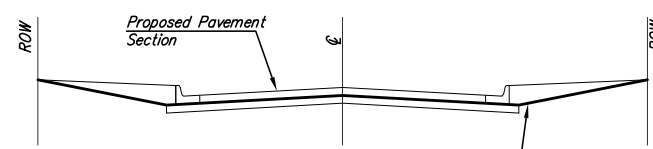
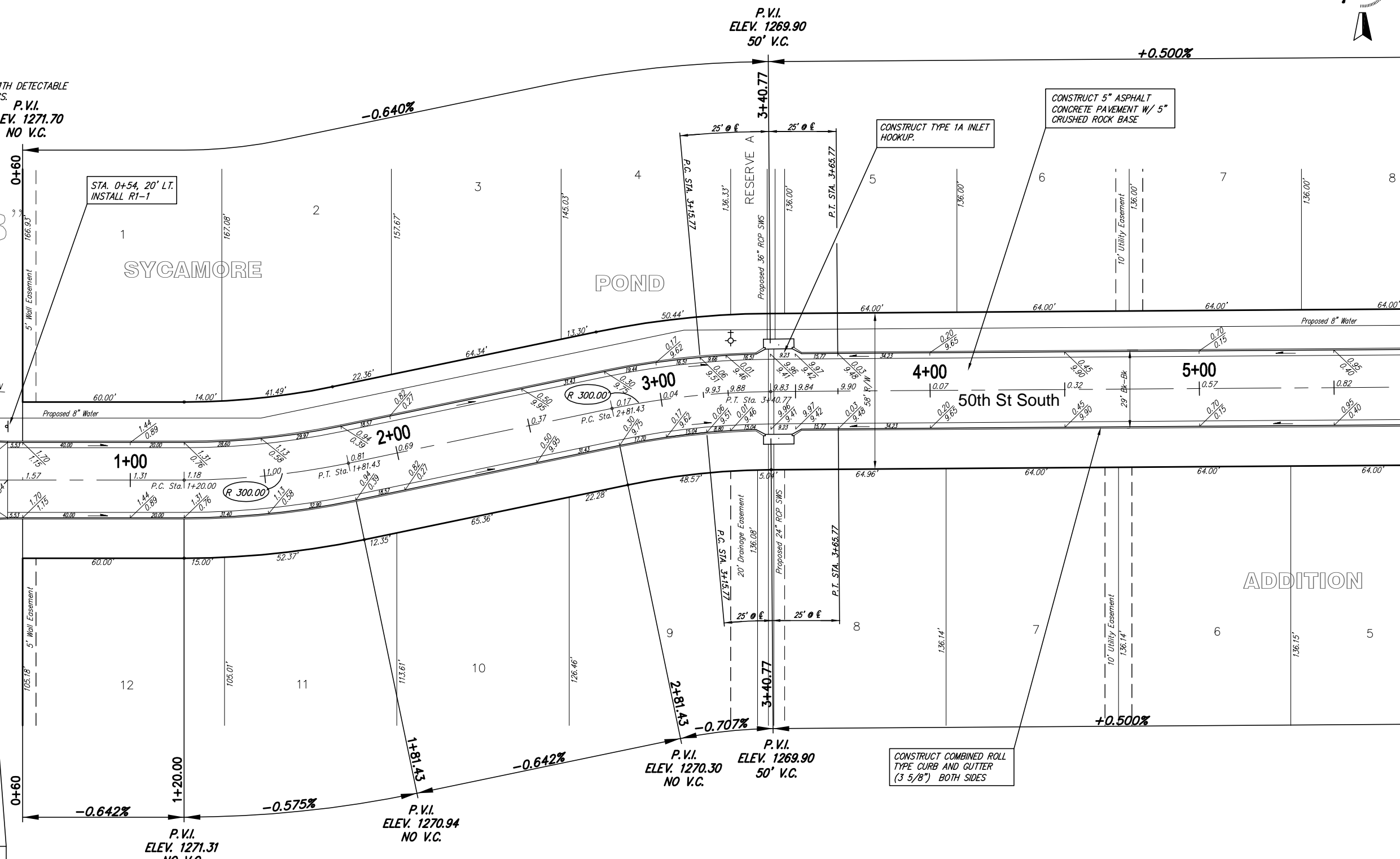
CONSTRUCT TYPE 1A INLET
HOOKUP.



WATER METER TO BE RELOCATED
BY DEPT. WATER AND SEWER.

REMOVE EXISTING DRIVE.
CONSTRUCT 44 L.F. CURB
AND GUTTER.

STA. 0+45, 20' RT.
INSTALL SNS
"Seneca 5100 S"
"50th Street 1000 W"



ROW GRADING DETAIL

NOTE: ROLL TYPE CURB AND
GUTTER TO BE CONSTRUCTED ALONG
PAVEMENT DEPICTED ON THIS SHEET

Sycamore Pond Addition, Paving Improvements
50th Street South
WICHITA, KANSAS

Ruggles & Bohm, P.A.
Engineering, Surveying, Land Planning

924 North Main (316) 264-8008
Wichita, Kansas 67203 (316) 264-4621 fax
www.rbkansas.com E-mail: info@rbkansas.com

DESIGN EJG	DRAWN RA	REVIEW	SHEET 5
DRAWING FILE paving {50th St - 1}			PROJECT NUMBER 472-84416
DATE Sept. 20, 2006			16