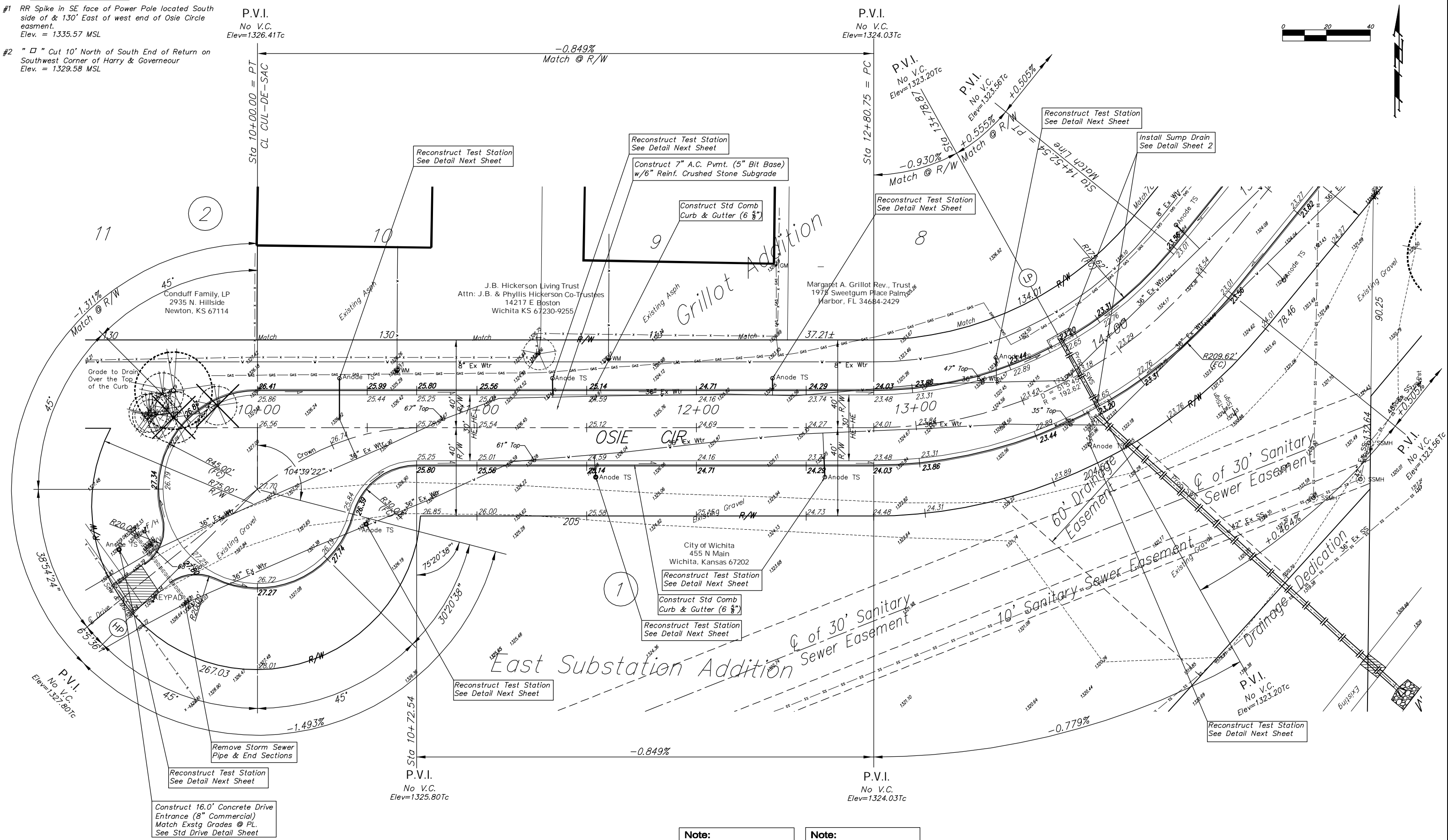


Benchmarks

- #1 RR Spike in SE face of Power Pole located South side of & 130' East of west end of Osie Circle easment. Elev. = 1335.57 MSL
- #2 " " Cut 10' North of South End of Return on Southwest Corner of Harry & Gouverneur Elev. = 1329.58 MSL



Note:
Pavement, Sidewalks, and Etc. To Be Removed Are Indicated By:

Note:
Trees/Shrubs to be removed are marked thus:

Drawing File: E:\Eng\Gouverneur & Osie\Land\dwg\Bases\paving
 Design: KK
 Design: TCA
 Approved: JFB
 Scale: NOTED
 Project No. 06-09-E652
 GOVERNEUR & OSIE
PAVING PLAN
 Sta 9+50.00 to Sta 14+52.54

Baughman
 315 Bill St. Wichita, KS 67211 P 316-262-7271 F 316-262-0149
 ENGINEERING | SURVEYING | PLANNING | LANDSCAPE ARCHITECTURE