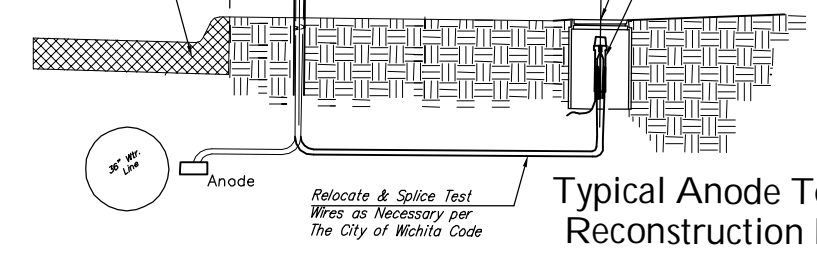
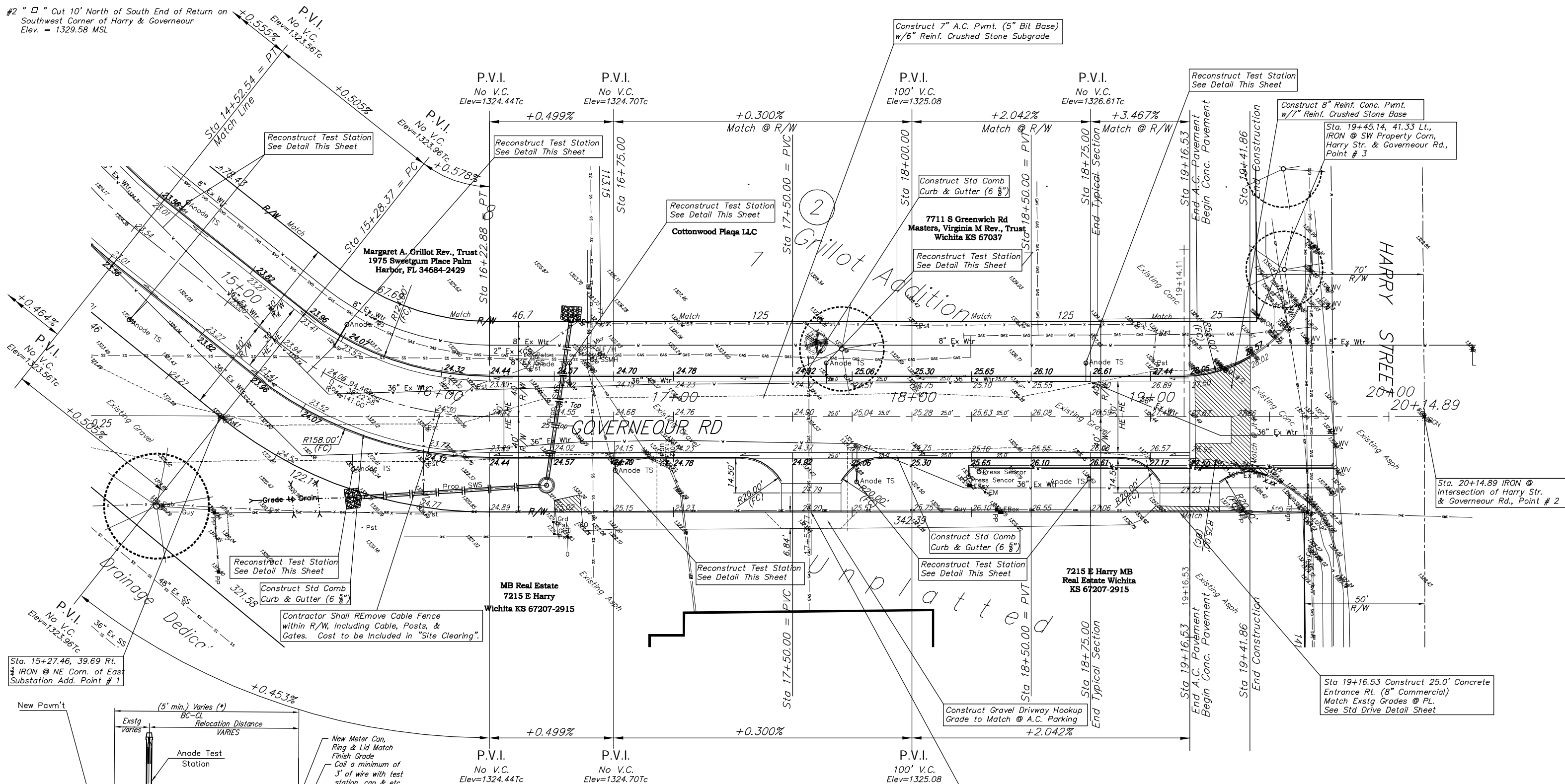


# Benchmarks

- #1 RR Spike in SE face of Power Pole located South side of & 130' East of west end of Osie Circle easment.  
Elev. = 1335.57 MSL
- #2 "□" Cut 10' North of South End of Return on Southwest Corner of Harry & Gouverneur  
Elev. = 1329.58 MSL



**Typical Anode Test Station Reconstruction Detail**

(\*) Relocation of all Anode Test Stations in conflict with construction of this project will be accomplished in conjunction with construction. Location of Test Stations will be typically set at least 5 ft. from the back of new curbline to the centerline of meter box unless otherwise as directed by the Field Engineer.

The top of the meter box to be field set typically to match finish grade elevations unless otherwise as directed by the Field Engineer.

Install meter can, ring & lid. All work and materials required is to be ~~INCIDENTAL~~ to the quantity item "Anode Test Station Reconstruction (EA.)"

**Note:**  
Pavement, Sidewalks, and Etc. To Be Removed Are Indicated By:

Drawing File: E:\Eng\Gouverneur & Osie\Land\dwg\Bsp(paving)  
 Design: ENGINEER  
 Drawn: STAFF  
 Approved: ENGINEER  
 Scale: NOTED

Project No. 0609E652  
 GOVERNEUR & OSIE  
**PAVING PLAN**

**Baughman Company, P.A.**  
 315 Ellis St. Wichita, KS 67211 P 316-262-7271 F 316-262-0149  
 ENGINEERING | SURVEYING | PLANNING | LANDSCAPE ARCHITECTURE

DEC 2006  
 SHEET  
 5  
 OF  
 18