

PAWNEE ALLEY PAVING PROJECT NO. 472-84471

JIM ARMOUR, P.E. - CITY ENGINEER

OCA 766120

GENERAL NOTES

CONSTRUCTION OF THIS PROJECT WILL OCCUR SIMULTANEOUSLY WITH THE CONSTRUCTION OF PAWNEE BETWEEN WASHINGTON AND HYDRAULIC. THE CONTRACTOR SHALL COORDINATE CONSTRUCTION ACTIVITIES WITH THE CONTRACTOR FOR THE PAWNEE PROJECT.

UNLESS SHOWN OR STATED OTHERWISE ON THESE DRAWINGS, MATERIALS AND CONSTRUCTION SHALL BE IN ACCORDANCE WITH CITY OF WICHITA CONCRETE PAVEMENT AND ASPHALTIC CONCRETE PAVEMENT SPECIFICATIONS.

CONTRACTOR WILL BE REQUIRED TO PROVIDE A MINIMUM ADVANCE NOTICE OF SEVENTY-TWO (72) HOURS TO UTILITY COMPANIES PRIOR TO STARTING ANY EXCAVATION AS FOLLOWS:

KANSAS ONE-CALL 1-800-344-7233
OR 687-2470 (LOCAL WICHITA)

THE CONTRACTOR MUST NOTIFY THE FOLLOWING IN CASE OF AN EMERGENCY:

AT&T (TELEPHONE)	800-870-8390
COX COMMUNICATIONS (CABLE)	282-0861
WESTAR (ELECTRIC)	383-8800
KANSAS GAS SERVICE (GAS)	832-3101
CITY OF WICHITA WATER & SEWER MAINT.	282-8000
AQUILA (GAS)	948-0096

THE CONTRACTOR SHALL BE RESPONSIBLE FOR PRESERVING PROPERTY IRONS. THE CONTRACTOR WILL BE REQUIRED TO REESTABLISH ANY PROPERTY IRONS WHICH ARE DAMAGED OR DESTROYED BY HIS CONSTRUCTION OPERATIONS. SUCH IRONS SHALL BE REESTABLISHED BY A LICENSED LAND SURVEYOR IN ACCORDANCE WITH STATE LAWS.

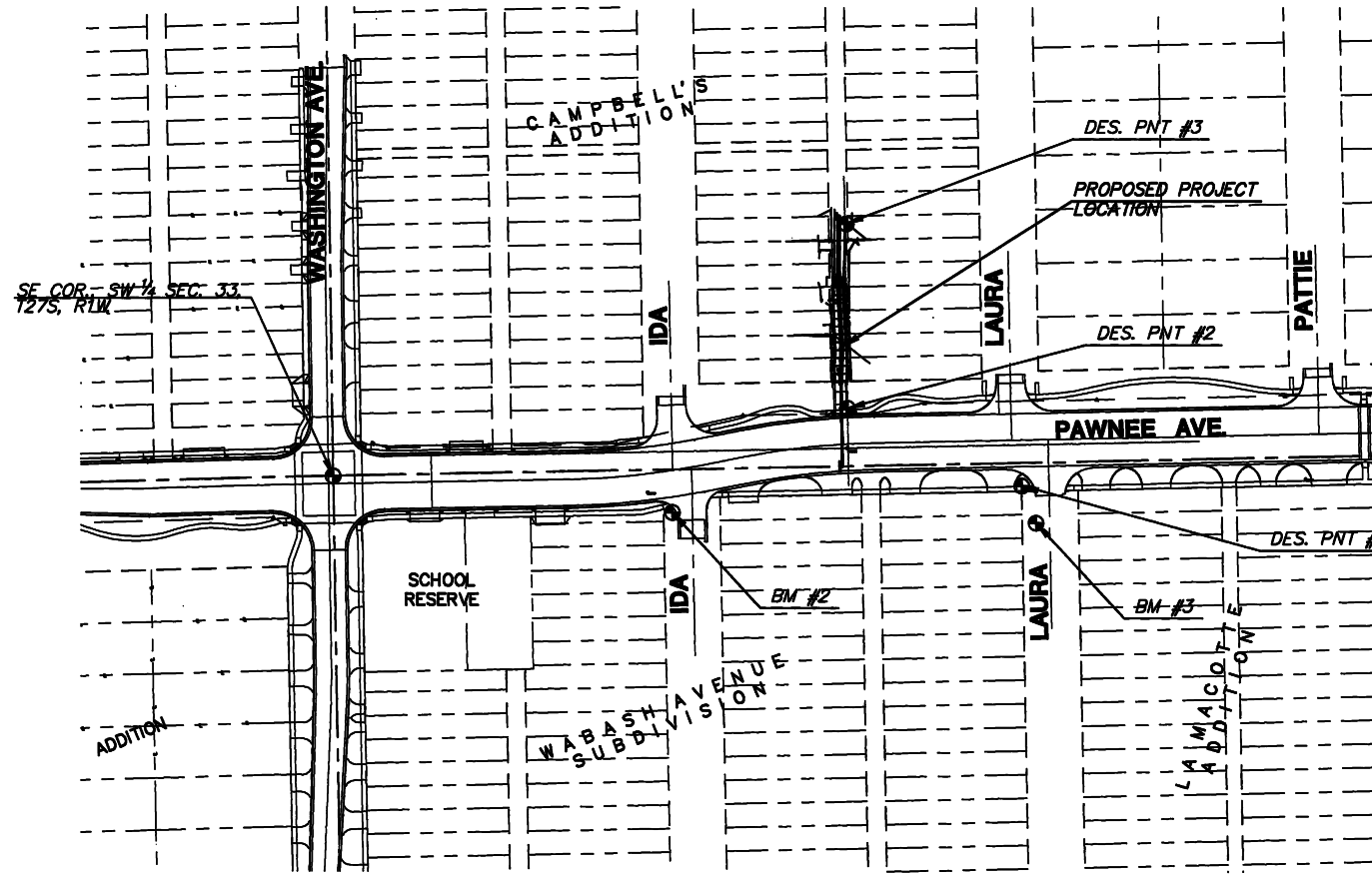
EXISTING UTILITIES AND THEIR LOCATIONS, AS SHOWN ON THE PLANS REPRESENT THE BEST INFORMATION OBTAINABLE FOR DESIGN. LOCATION INFORMATION HAS BEEN OBTAINED FROM THE VARIOUS UTILITY COMPANIES AND IS EITHER FROM COMPANY RECORD DRAWINGS OR COMPANY PROVIDED FIELD LOCATIONS. THE PLAN LOCATIONS SHOWN ARE NOT GUARANTEED. ADDITIONAL EXISTING UTILITIES MAY ALSO BE ENCOUNTERED.

RUBBLE FROM THE REMOVAL OF MISCELLANEOUS STRUCTURES AND EXCESS EXCAVATION WHICH IS TO BE WASTED SHALL BE DISPOSED OF ON SITES TO BE PROVIDED BY THE CONTRACTOR. THESE SITES SHALL BE APPROVED BY THE ENGINEER AS TO SUITABILITY, APPEARANCE AND SITE LOCATION. LOCATIONS THAT, IN THE OPINION OF THE ENGINEER, WILL LEAVE AN UNSIGHTLY APPEARANCE WILL NOT BE APPROVED. ALL DISPOSAL SITES MUST BE APPROVED BY THE KANSAS DEPARTMENT OF HEALTH AND ENVIRONMENT. MATERIAL EITHER STOCKPILED OR DISPOSED OF IN A FLOOD PLAIN WOULD REQUIRE A KANSAS STATE BOARD OF AGRICULTURE PERMIT. ANY MATERIAL DUMPED IN WATERS OF THE UNITED STATES OR WETLANDS IS SUBJECT TO U.S. CORPS OF ENGINEERS PERMITTING REGULATIONS. ANY MATERIAL BURIED OR STOCKPILED BEYOND APPROVED CONSTRUCTION LIMITS WOULD REQUIRE ADDITIONAL ARCHAEOLOGICAL INVESTIGATIONS UNLESS BURIED IN A PREVIOUSLY APPROVED BORROW LOCATION.

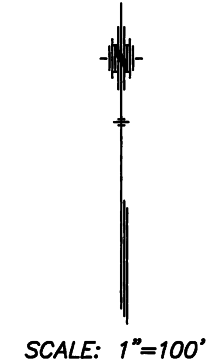
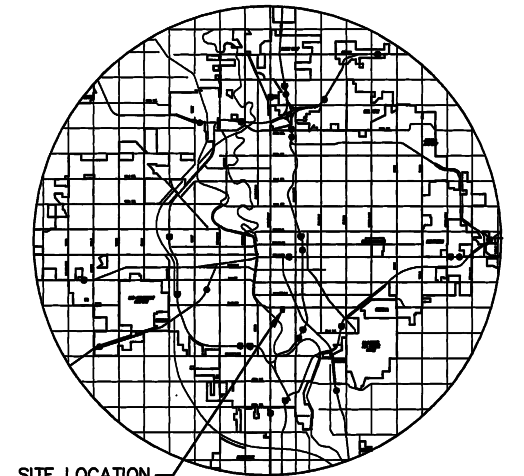
CONTRACTOR TO MAINTAIN ACCESS TO PROPERTIES DURING CONSTRUCTION OR OBTAIN APPROVAL FROM AFFECTED PROPERTY OWNERS TO CLOSE PART OF ALL OF THE ALLEY. CONTRACTOR SHALL BE RESPONSIBLE FOR COORDINATING RESIDENTIAL TRASH PICK-UP IF DISRUPTED BY CONSTRUCTION.

TRAFFIC CONTROL SHALL CONSIST OF INSTALLING AND MAINTAINING TYPE III BARRICADES AT THE NORTH END OF CONSTRUCTION, AND "ROAD CLOSED AHEAD" SIGN IN THE ALLEY IMMEDIATELY SOUTH OF BLAKE STREET. CONTRACTOR SHALL ALSO PROVIDE ANY NECESSARY TRAFFIC CONTROL AT THE SOUTH END OF CONSTRUCTION, IF NECESSARY. COORDINATE WITH CONTRACTOR FOR PAWNEE PROJECT.

AREAS DISTURBED BY CONSTRUCTION ARE TO BE RESEED WITH A PERMANENT SEED MIX IN TABLE 902-1 TO MATCH ADJACENT AREAS OR AS DIRECTED BY THE ENGINEER. THE SEED MIXTURE TYPE IS TO MATCH ADJACENT TURF OR AS DIRECTED BY THE ENGINEER. RESTORATION OF DISTURBED AREAS SHALL INCLUDE, BUT NOT BE LIMITED TO, TOPSOIL PERPARATION, SEEDING, AND MULCHING. ALL SEEDING WORK SHALL BE IN ACCORDANCE WITH THE CITY OF WICHITA STANDARD SPECIFICATIONS AND CITY OF WICHITA ADMINISTRATIVE REGULATION NO. AR78, WHICH GOVERNS CLEANUP AND RESTORATION OR REPLACEMENT FOLLOWING CONSTRUCTION. THE CONTRACTOR SHALL BE RESPONSIBLE FOR INSTALLING EROSION CONTROL BLANKET (CURLX 1 OR APPROVED EQUAL) AT THE BACK OF PAVEMENT (8' MINIMUM WIDE). ALL COSTS FOR THIS WORK WILL BE SUBSIDIARY TO THE BID ITEM "SITE RESTORATION".



RECAPITULATION OF QUANTITIES		
ITEM	QUANTITY	UNIT
Clearing and Grubbing	1	L.S.
Excavation	90	C.Y.
Compaction (95% Density)	30	C.Y.
Concrete Alley Pavement, 7"	145	S.Y.
Reinforced Crushed Rock Base, 6"	167	S.Y.
Traffic Control	1	L.S.
Erosion Control BMP	1	L.S.
Site Restoration	1	L.S.
Mobilization	1	L.S.



INDEX TO DRAWINGS

SHEET NO.	DESCRIPTION
1	TITLE SHEET
2	SECTIONS AND MISC. DETAILS
3	PAVING PLAN SHEET
4-8	SOIL EROSION DETAILS
9	CROSS SECTIONS

BENCHMARK

BM #2 Square cut in Top of Curb SW return in Drive
N 1672622.5039, E 1652675.7780 Elev.=97.64

BM #3 Square cut in Drive return South Side
N 1672611.6729, E 1653061.6762 Elev.=98.14



**ALLEY IMPROVEMENTS BETWEEN
IDA AND LAURA, NORTH OF PAWNEE**

PROJECT NAME

TITLE SHEET

SHEET TITLE

JRA
DESIGN BY.

JSB
DRAWN BY.

JRA
CHECKED BY.

Jan. 2007
DATE

06678
JOB NO.

1 / 9
SHEET/OF

411 N. WEBB ROAD
WICHITA, KS. 67204
316 - 684 - 9600