

State of Kansas) ss  
Sedgwick County)

I, the undersigned, registered land surveyor of the State of Kansas, do hereby certify that the following described tract of land was surveyed on \_\_\_\_\_, 2007 and the accompanying final plat was prepared and that all the monuments shown herein actually exist and their positions are correctly shown to the best of my knowledge and belief:

Lots 1-4, 7-12, the east half of 13 & 20, I, R & R Subdivision of Block 1 in College Hill Addition to Wichita, Kansas; Along with the west 100 feet of the north 140 feet, College Park, College Hill Addition to Wichita; AND Along with Lots 2, 4, 6, 8, 10 and 12, Roembach's Addition to Wichita, Kansas; AND Along with the west 50 feet of the south half of the east half of 1, Block 2, College Hill Addition to Wichita; AND Along with the north half of the west half of 1, Block 2, College Hill Addition to Wichita.

Existing public dedications, rights of way, and easements being vacated by virtue of K.S.A. 12-512(b).



\_\_\_\_\_, Surveyor  
William P. Fox, L.S. # 799  
for Poe & Associates, Inc.

State of Kansas) ss  
Sedgwick County)

Know all men by these presents that we, the undersigned, have caused the land described in the surveyor's certificate to be platted into Lots and Blocks, to be known as "PARKSTONE ADDITION", to Wichita, Sedgwick County, Kansas. The utility easements are hereby granted to the public as indicated for constructing, maintaining, operating, and repairing utilities. The temporary utility easements are granted until such time as the existing utilities within the easements are relocated. The access controls are hereby granted to the appropriate governing body as shown hereon. Right of Way as shown is hereby dedicated to the public for streets. A drainage plan has been developed for the plat. All drainage easements and/or rights of way shall remain at established grades or as modified with the approval of the applicable City of County Engineer, and unobstructed to allow for the conveyance of stormwater.

College Hill Urban Village, L.L.C.

By \_\_\_\_\_  
Name \_\_\_\_\_  
Title \_\_\_\_\_

State of Kansas) ss  
Sedgwick County)

BE IT REMEMBERED that on this \_\_\_\_\_ day of \_\_\_\_\_, 2007, before me, the undersigned, a notary public in and for the County and State aforesaid came \_\_\_\_\_, College Hill Urban Village, L.L.C., personally known to me to be the same persons who executed this instrument and such persons duly acknowledged the execution of the same.

IN WITNESS WHEREOF, I have hereunto set my hand and affixed my official seal the day and year first above written.

Notary Public: \_\_\_\_\_

Name: \_\_\_\_\_

My Appointment Expires: \_\_\_\_\_

We, \_\_\_\_\_,

holders of a mortgage on the above described property do hereby consent to the plat of "Parkstone Addition".

Print \_\_\_\_\_

Signed \_\_\_\_\_

Title \_\_\_\_\_

State of Kansas) ss  
Sedgwick County)

BE IT REMEMBERED that on this \_\_\_\_\_ day of \_\_\_\_\_, 2007, before me, the undersigned, a notary public in and for the County and State aforesaid came \_\_\_\_\_, personally known to me to be the same person who executed this instrument and such person duly acknowledged the execution of the same.

IN WITNESS WHEREOF, I have hereunto set my hand and affixed my official seal the day and year first above written.

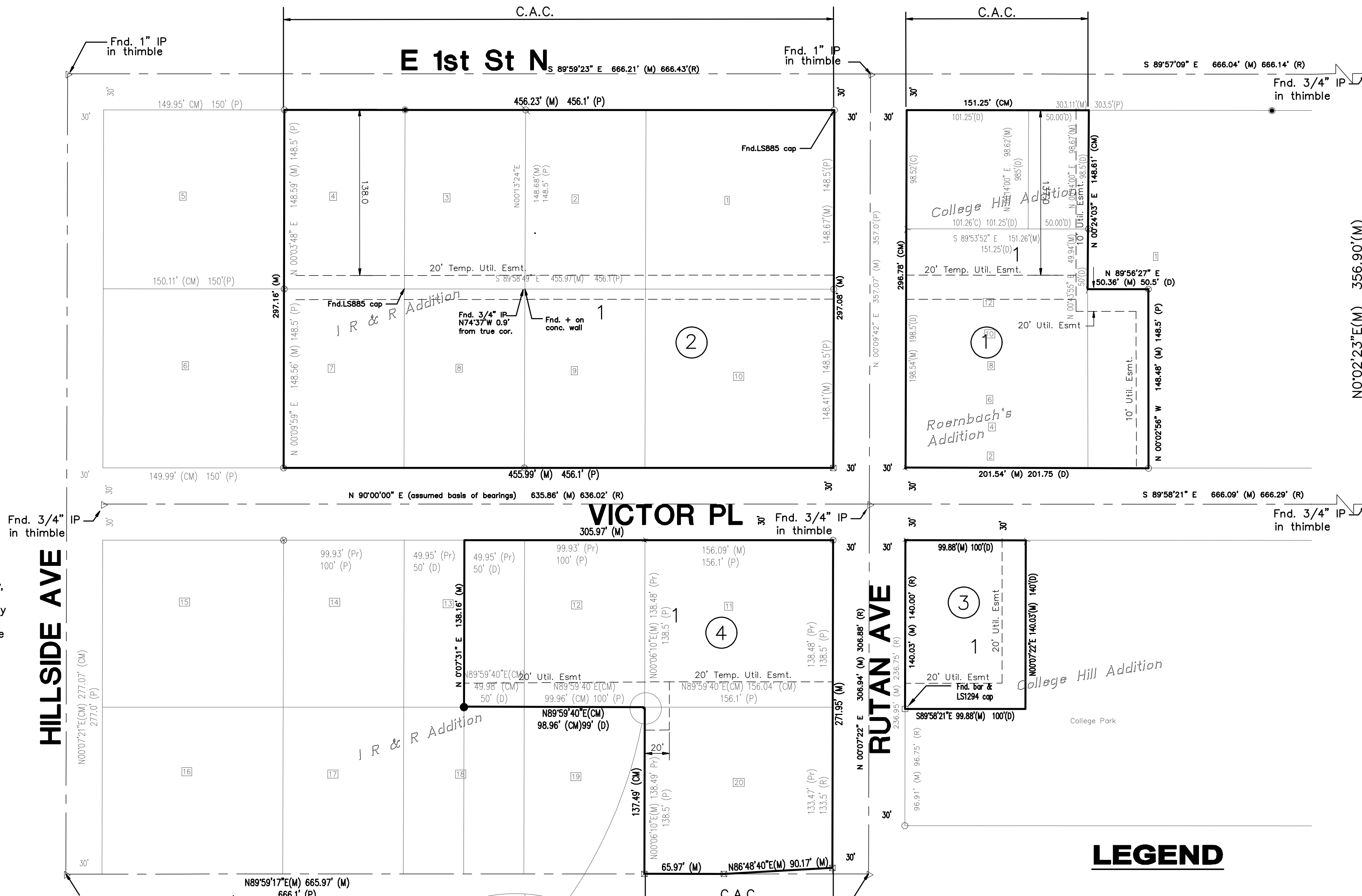
My appointment expires: \_\_\_\_\_

Notary Public \_\_\_\_\_

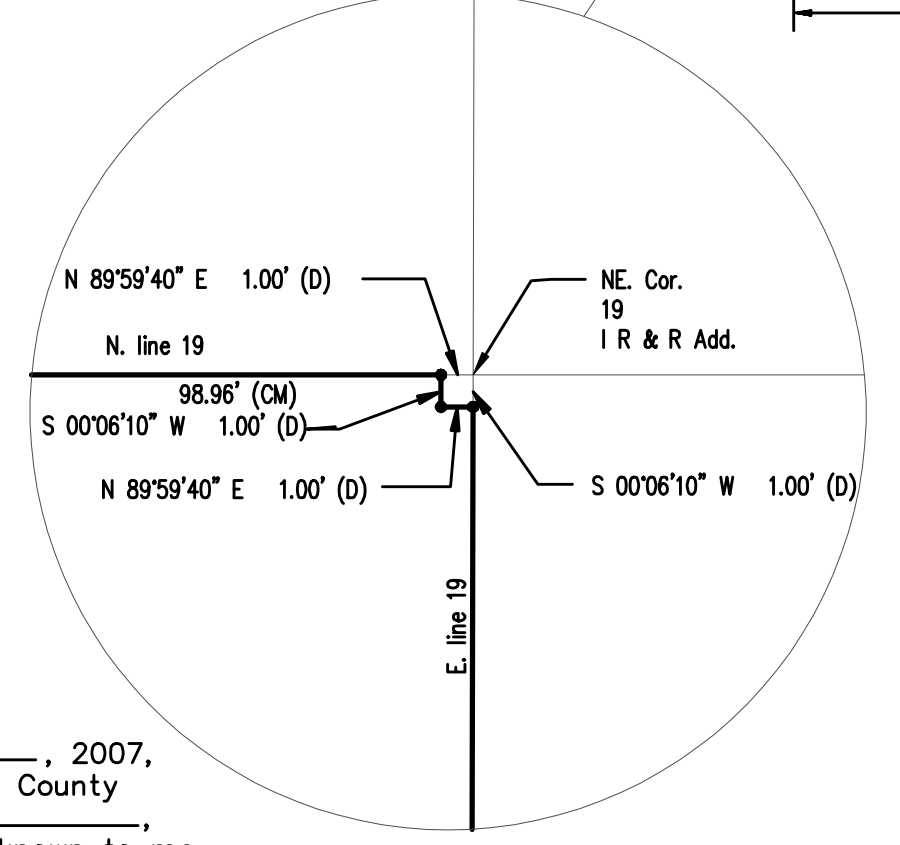
Print \_\_\_\_\_

Note:

This plat is subject to the Provisions of Parkstone Planned Unit Development, PUD-26 on file with the Metropolitan Area Planning Dept.

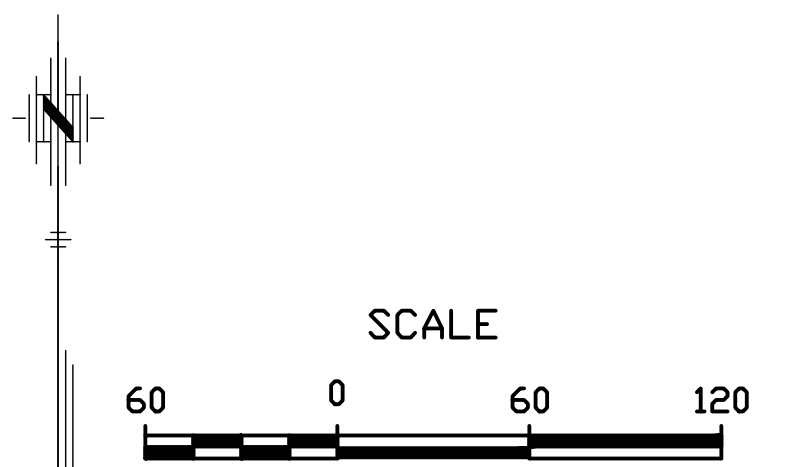


S.W. Cor., N.W. 1/4  
Sec. 23-T27S-R1E  
3/4" Pipe in Thimble



### LEGEND

- (M) Measured dimension
- (C) Calculated from measured dimension
- (P) Platted dimension
- (D) Deeded Dimension
- Point Found
- ⊗ "+ Cut Set
- ⊕ "+ Cut Found
- ⊖ 1/2" bar Found
- ⊘ Pipe in Thimble Found
- ✱ PK Nail Found
- 3" Monument disk Found
- ⋄ "V" Notch Found
- ⊠ 5/8" Bar Found
- ⊙ 1 1/2" Pipe Found
- ⊗ 3/4" Pipe Found
- C.A.C. Complete Access Control
- ⊠ Original Lot Number



State of Kansas) ss  
Sedgwick County)  
This plat of "PARKSTONE ADDITION", to Wichita, Sedgwick County, Kansas has been submitted to and approved by the Wichita/Sedgwick County Metropolitan Area Planning Commission, Wichita, Kansas.

Dated this \_\_\_\_\_ day of \_\_\_\_\_, 2007.  
Wichita/Sedgwick County Metropolitan Area Planning Commission.  
\_\_\_\_\_, Chair  
Darrell A. Downing

\_\_\_\_\_, Secretary  
John L. Schlegel

State of Kansas) ss  
City of Wichita)  
This plat approved and all dedications shown hereon accepted by the City Council of the City of Wichita, Kansas, this \_\_\_\_\_ day of \_\_\_\_\_, 2007. At the Direction of the City Council.

\_\_\_\_\_, Mayor  
Carl Brewer  
\_\_\_\_\_, City Clerk  
Karen Sublett

Entered on transfer record this \_\_\_\_\_ day of \_\_\_\_\_, 2007.  
\_\_\_\_\_, County Clerk  
Don Brace

State of Kansas) ss  
Sedgwick County)  
This is to certify that this instrument was filed for record in the Register of Deeds office at \_\_\_\_\_ o'clock \_\_\_\_\_ .m., on the \_\_\_\_\_ day of \_\_\_\_\_, 2007, and is duly recorded.

\_\_\_\_\_, Register of Deeds  
Bill Meek  
\_\_\_\_\_, Deputy  
Tonya Buckingham

State of Kansas) ss  
Sedgwick County)  
Reviewed in accordance with K.S.A. 58-2005 on this \_\_\_\_\_ day of \_\_\_\_\_, 2007.

Tricia L. Robello, L.S. # 1246  
Deputy County Surveyor  
Sedgwick County, Kansas

# FINAL PLAT OF PARKSTONE ADDITION TO WICHITA, SEDGWICK COUNTY, KANSAS LOCATED IN THE NW 1/4, SECTION 23, T27S, R1E OF THE 6 P.M.

DATE OF PREPARATION 09/21/07

