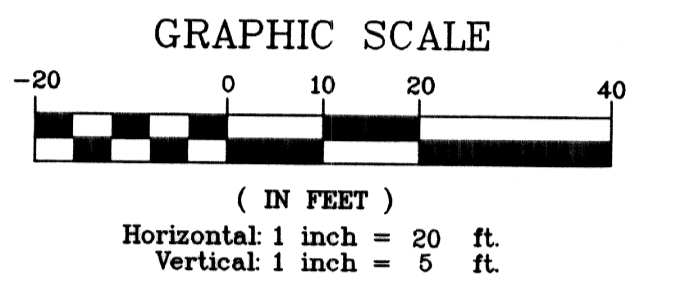
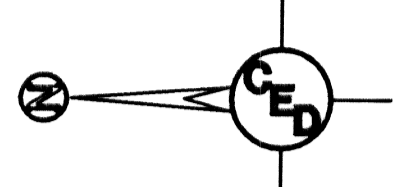


UTILITIES SHOWN REPRESENT THE BEST INFORMATION AVAILABLE FOR DESIGN. ADDITIONAL UTILITIES MAY BE PRESENT ON THIS PROJECT. THE CONTRACTOR SHALL BE RESPONSIBLE FOR DETERMINING THE EXACT LOCATION, DEPTH AND SIZE OF ALL UNDERGROUND UTILITIES PRIOR TO CONSTRUCTION. THE CONTRACTOR SHALL BE LIABLE FOR ANY DAMAGE CAUSED BY THE FAILURE TO DO SO.

SURVEY DISCLAIMER:
 TOPOGRAPHIC SURVEY AND CONTOUR MAP USED IN PREPARING PLANS WAS PROVIDED BY SAVOY COMPANY, P.A., 535 S. EMPORIA, SUITE 104, WICHITA, KS. ENGINEER DOES NOT GUARANTEE SURVEY ELEVATIONS FOR ACCURACY. CONTRACTOR SHALL VERIFY ELEVATIONS AND NOTIFY ENGINEER OF ANY DISCREPANCIES.

HORIZONTAL CONTROL POINTS

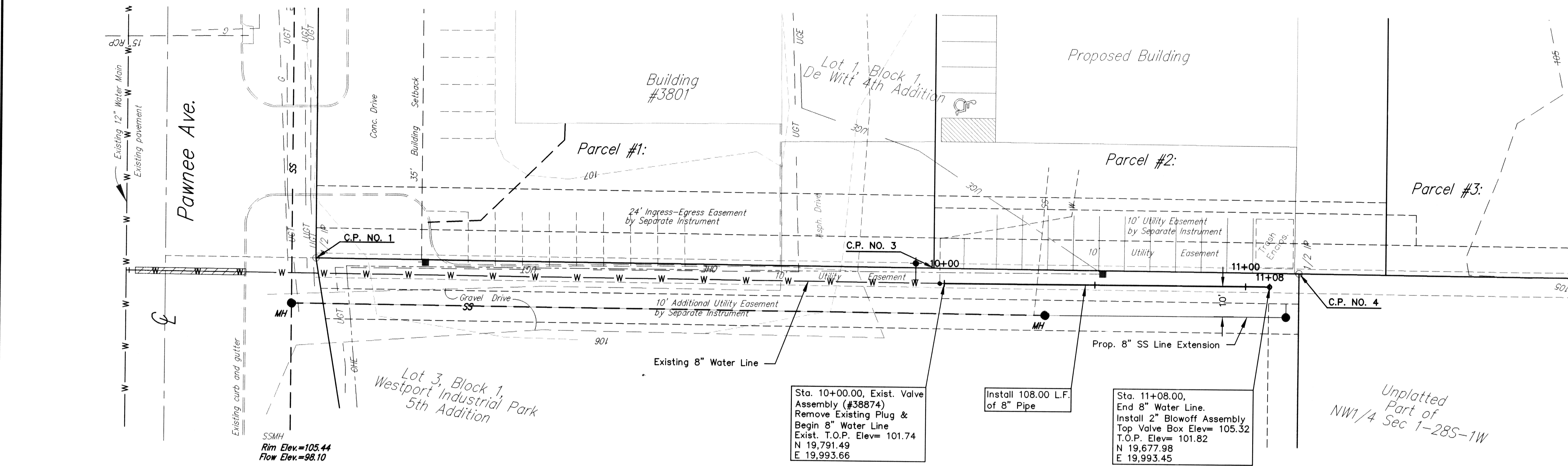
C.P. NO. 1	N 20,000.000 E 20,000.000	1/2" IRON PIN NW COR. PARCEL #1
C.P. NO. 2	N 20,000.000 E 20,266.414	1/2" IRON PIN NE COR. PARCEL #1
C.P. NO. 3	N 19,795.000 E 19,998.687	1/2" IRON PIN NW COR. PARCEL #2
C.P. NO. 4	N 19,645.000 E 19,997.726	1/2" IRON PIN SW COR. PARCEL #2



- SURVEY MARKER LEGEND**
- 3/4" MKEC = 3/4" IRON PIPE W/MKEC CAP (FOUND)
 - 5/8" MKEC = 5/8" REBAR W/MKEC CAP (FOUND)
 - 5/8" PIN = 5/8" STEEL PIN (FOUND)
 - RLS 950 = 1/2" REBAR W/RLS 950 CAP (FOUND)
- LEGEND**
- W = WATER MAIN
 - SWS = STORM WATER SEWER
 - UGT = UNDER GROUND TELEPHONE
 - UGFO = UNDER GROUND FIBER OPTIC
 - C.O. = CLEAN OUT
 - CATV = CABLE TELEVISION PEDESTAL
 - F.H. = FIRE HYDRANT
 - ICV = IRRIGATION CONTROL VALVE
 - L.P. = LIGHT POLE
 - SIGN = SIGN
 - W.V. = WATER VALVE
 - XFMR = ELECTRIC TRANSFORMER
 - SWS M.H. = STORM WATER SEWER MANHOLE
 - FO M.H. = FIBER OPTIC MANHOLE

BM#1: Top of Rim at ExSSMH#1, South of Pawnee and East of West Street at N 20,008.15, E 19,943.02. Elevation 105.44 City Datum, (per survey)

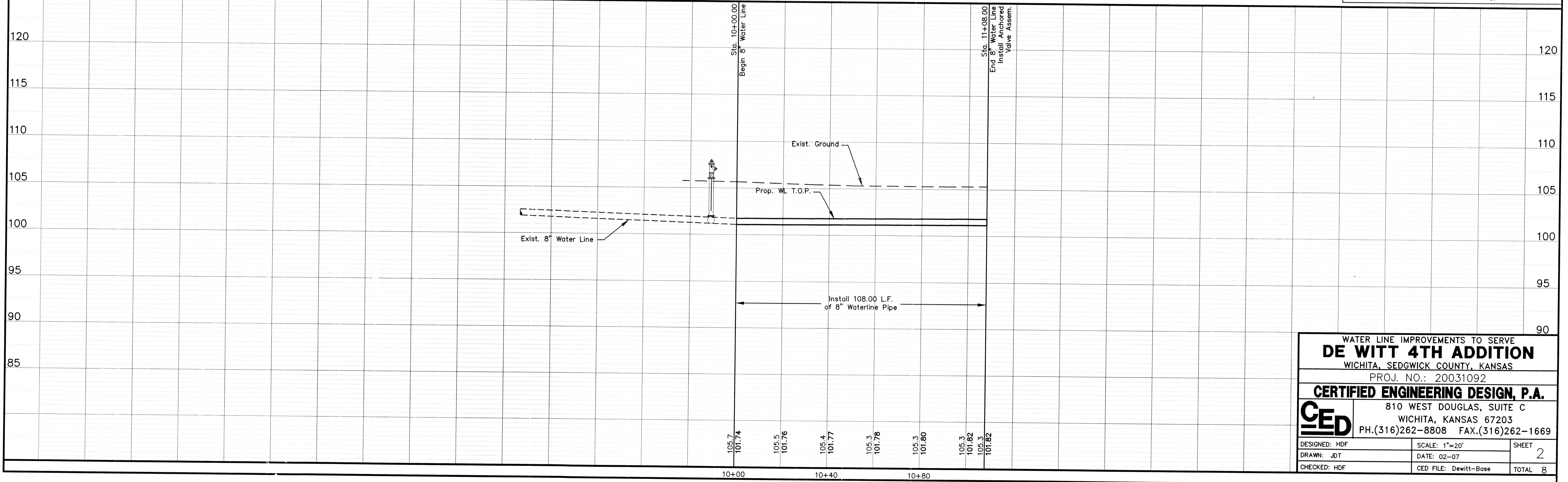
BM#2: Top of Rim at ExSSMH#2, South of Pawnee and East of West Street at N 20,007.72, E 20,255.04. Elevation 106.15 City Datum, (per survey)



UNLESS NOTED OTHERWISE, ELEVATIONS SHOWN ARE TOP OF PIPE.

NO CORRECTIONS MADE.

8" WATER LINE PROFILE



WATER LINE IMPROVEMENTS TO SERVE
DE WITT 4TH ADDITION
 WICHITA, SEDGWICK COUNTY, KANSAS
 PROJ. NO.: 20031092

CERTIFIED ENGINEERING DESIGN, P.A.

CED 810 WEST DOUGLAS, SUITE C
 WICHITA, KANSAS 67203
 PH.(316)262-8808 FAX.(316)262-1669

DESIGNED: HDF	SCALE: 1"=20'	SHEET
DRAWN: JDT	DATE: 02-07	2
CHECKED: HDF	CED FILE: Dewitt-Base	TOTAL 8

As-Built 11-7-07
 T.H.-C.S.D