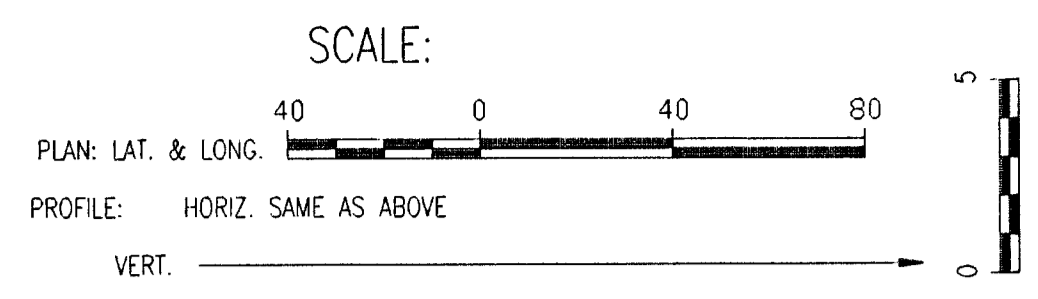
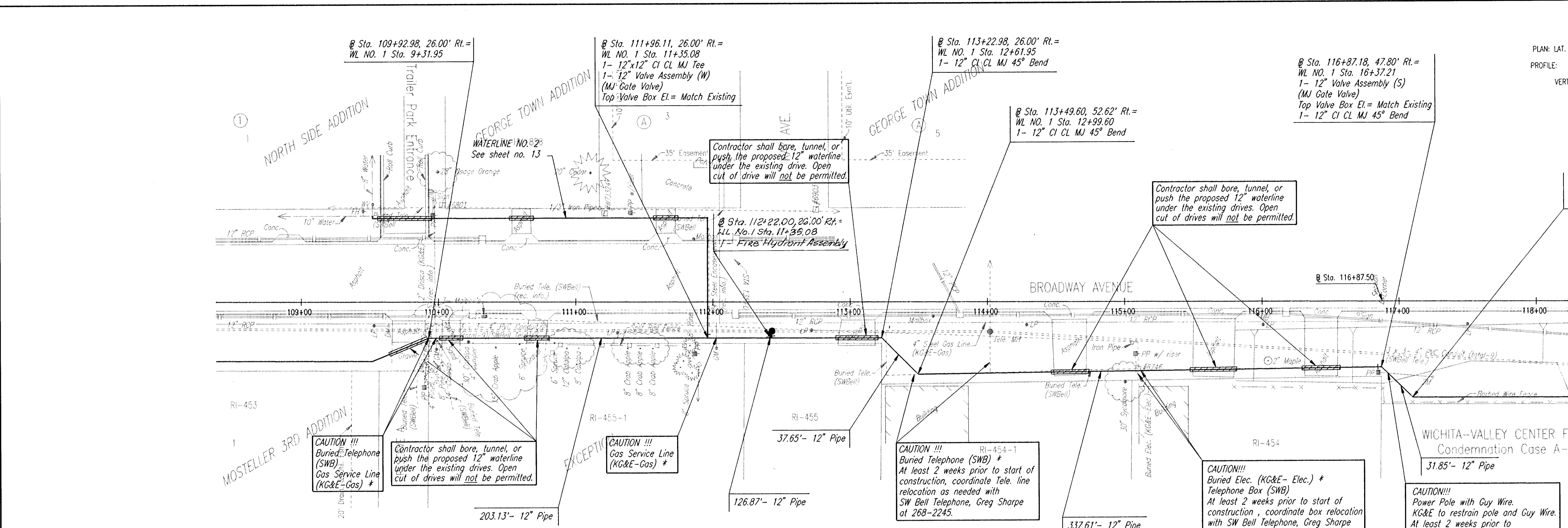
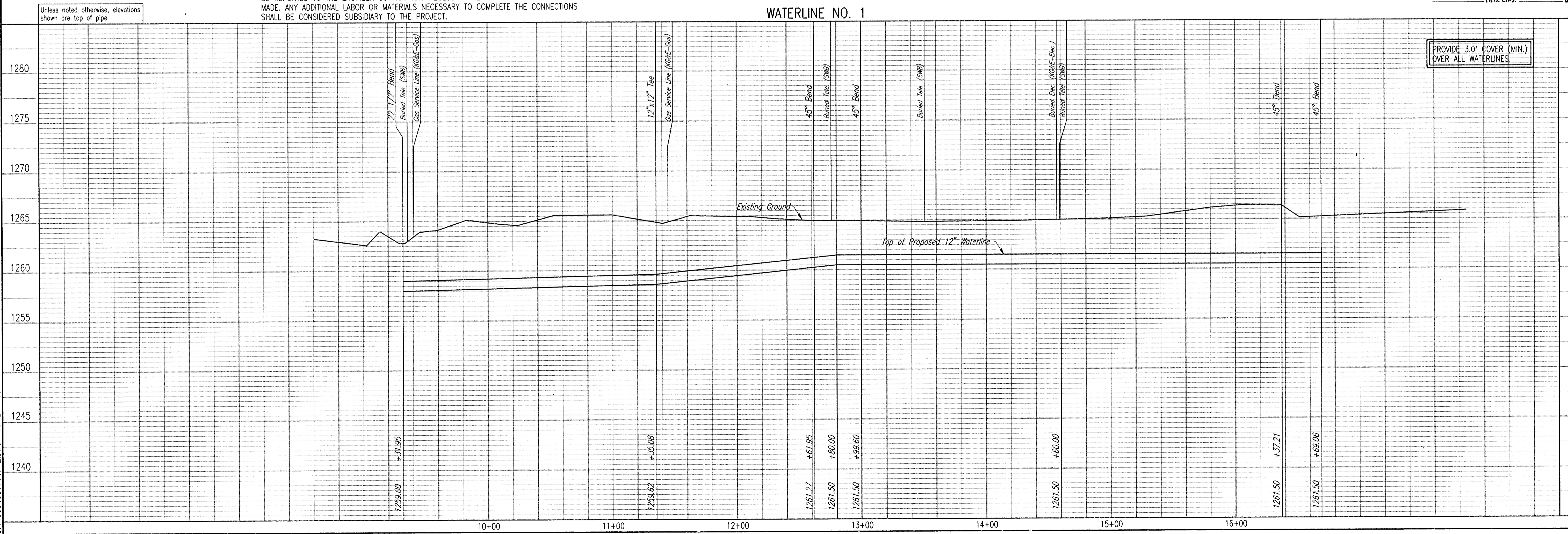


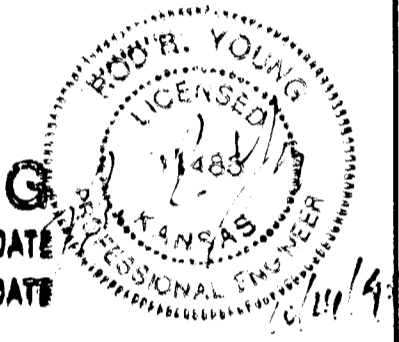
DSNR: RFJ OPER: JLM SCALE: 1=40.00  
 Q:\1995\95676\PP2.DWG 10-24-1995 9:12:37 am



\* PRIOR TO BEGINNING CONSTRUCTION, THE CONTRACTOR SHALL EXCAVATE THE UTILITIES TO VERIFY THEIR HORIZONTAL AND VERTICAL LOCATIONS. THE UTILITY LOCATION SHALL BE REPORTED TO THE ENGINEER SO THAT ANY NECESSARY PLAN MODIFICATIONS CAN BE MADE. ANY ADDITIONAL LABOR OR MATERIALS NECESSARY TO COMPLETE THE CONNECTIONS SHALL BE CONSIDERED SUBSIDIARY TO THE PROJECT.



**RECORD DRAWING**  
 DATE: 10/14/97  
 DES. ENG. DATE



CITY OF HAYSVILLE  
 SEDGWICK COUNTY, KANSAS  
**WATERLINE NO. 1**  
 HAYSVILLE EMERGENCY WATERLINE  
 WATERLINE IMPROVEMENTS

PROFESSIONAL ENGINEERING CONSULTANTS, P.A.  
 ENGINEERS  
 WICHITA, KANSAS  
 Job No. 34-95676  
 Date October 1995  
 Designed By M.D.S. MJK  
 Drawn By JLM