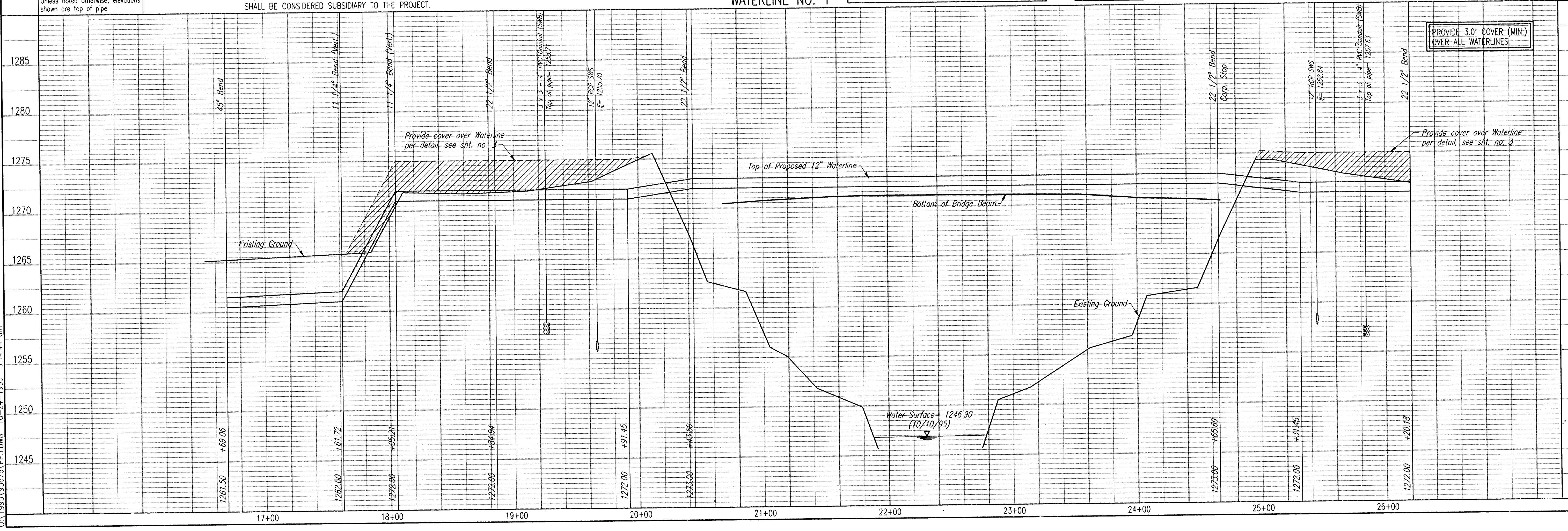


DSNR: RCJ OPER: JLM SCALE: 1"=40.00
 O:\1995\95676\PP3.DWG 10-24-1995 9:14:44 am



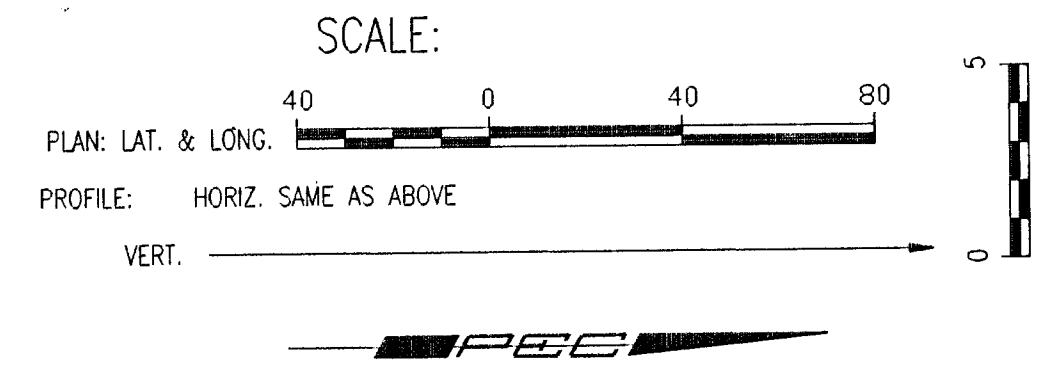
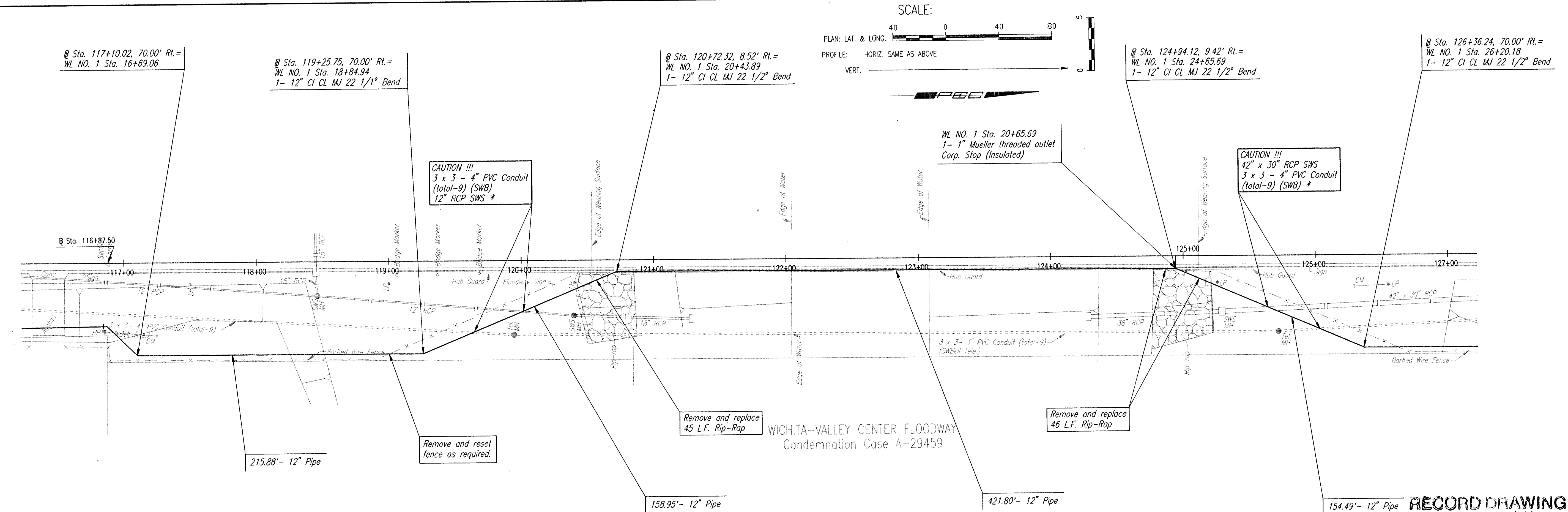
Unless noted otherwise, elevations shown are top of pipe

* PRIOR TO BEGINNING CONSTRUCTION, THE CONTRACTOR SHALL EXCAVATE THE UTILITIES TO VERIFY THEIR HORIZONTAL AND VERTICAL LOCATIONS. THE UTILITY LOCATION SHALL BE REPORTED TO THE ENGINEER SO THAT ANY NECESSARY PLAN MODIFICATIONS CAN BE MADE. ANY ADDITIONAL LABOR OR MATERIALS NECESSARY TO COMPLETE THE CONNECTIONS SHALL BE CONSIDERED SUBSIDIARY TO THE PROJECT.

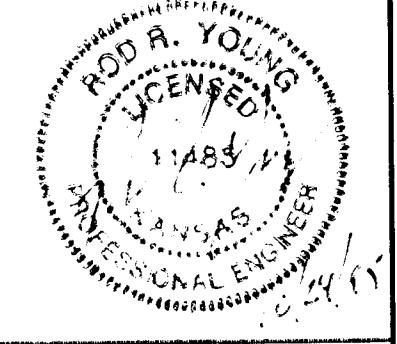
WATERLINE NO. 1

ALL PIPE AND FITTINGS SHALL BE D.I.J. FROM WL STA. 17+41.72 TO WL STA. 27+68.32 PER THE SPECIFICATIONS.

PIPE SHALL BE INSULATED FROM WL STA. 20+14 TO WL STA. 24+96 PER THE SPECIFICATIONS.



RECORD DRAWING
 DATE: 10/19/95
 DES. ENG. DATE



CITY OF HAYSVILLE
 SEDGWICK COUNTY, KANSAS
WATERLINE NO. 1
 HAYSVILLE EMERGENCY WATERLINE
 WATERLINE IMPROVEMENTS

PROFESSIONAL ENGINEERING CONSULTANTS, P.A.
 ENGINEERS
 WICHITA, KANSAS
 Job No. 34-95676
 Date October 1995

Designed By: MDS, MJK
 Drawn By: JJA