

@ Sta. 126+36.24, 70.00' Rt. =
WL NO. 1 Sta. 26+20.18

@ Sta. 128+70.78, 70.00' Rt. =
WL NO. 1 Sta. 28+54.72
1- 12" CI CL MJ 45° Bend

@ Sta. 128+87.69, 53.09' Rt. =
WL NO. 1 Sta. 28+78.63
1- 12" CI CL MJ 45° Bend
1- 12" Valve Assembly (N)
(MJ Gate Valve)
Top Valve Box El. = Match Existing

@ Sta. 133+74.52, 53.09' Rt. =
WL NO. 1 Sta. 33+65.46
1- 12" CI CL MJ 11 1/4° Bend

@ Sta. 134+83.10, 31.00' Rt. =
WL NO. 1 Sta. 34+76.26
1- 12" CI CL MJ 11 1/4° Bend

CAUTION!!!
12" Steel Gasline *
(Celly Gas Gathering)
Coordinate construction
operations w/ Celly Gas Gathering,
Larry Chancey @ 775-6091
(Provide at least 2 weeks notice)

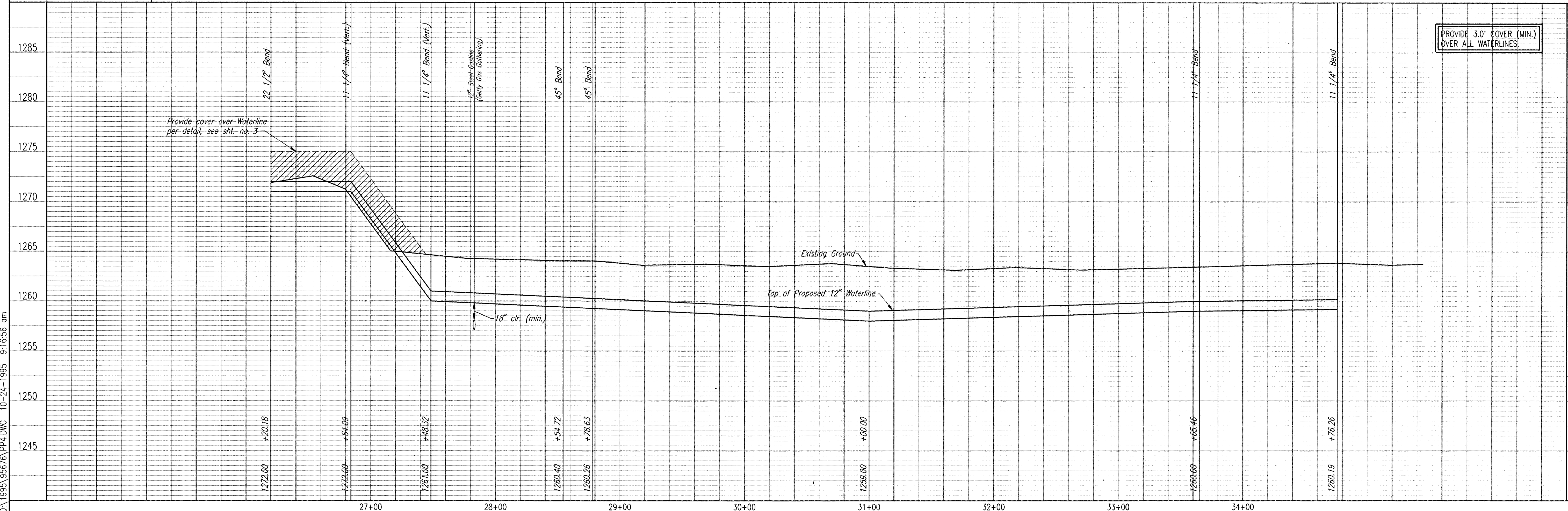
CAUTION!!!
Guy Pole with Guy Wire.
KG&E to remove pole and Guy Wire.
At least 2 weeks prior to
start of construction, coordinate
work with KG&E-Electric,
Mr. Russ Chitwood at 261-6251.

ALL PIPE AND FITTINGS SHALL BE D1 RJ FROM
WL STA. 17+41.72 TO WL STA. 27+68.32
PER THE SPECIFICATIONS.

* PRIOR TO BEGINNING CONSTRUCTION, THE CONTRACTOR SHALL EXCAVATE THE UTILITIES TO VERIFY THEIR HORIZONTAL AND VERTICAL LOCATIONS. THE UTILITY LOCATION SHALL BE REPORTED TO THE ENGINEER SO THAT ANY NECESSARY PLAN MODIFICATIONS CAN BE MADE. ANY ADDITIONAL LABOR OR MATERIALS NECESSARY TO COMPLETE THE CONNECTIONS SHALL BE CONSIDERED SUBSIDIARY TO THE PROJECT.

Unless noted otherwise, elevations shown are top of pipe.

WATERLINE NO. 1



DSNR: REF. OPER. JLM. SCALE: 1"=40.00
C:\1995\95676\PP4.DWG 10-24-1995 9:16:56 am

RECORD DRAWING
M.D.K. PROJ. ENG. 1/1/97 DATE
R.E.S. ENG. DATE

PROF. R. YOUNG
LICENSED
11488
KANSAS
PROFESSIONAL ENGINEER

CITY OF HAYSVILLE
SEDWICK COUNTY, KANSAS
WATERLINE NO. 1
HAYSVILLE EMERGENCY WATERLINE
WATERLINE IMPROVEMENTS

PROFESSIONAL ENGINEERING CONSULTANTS, P.A.
OWNERS
WICHITA, KANSAS

Job No. 34-95676
Date October 1995

Designed By M.D.S., M.D.K.
Drawn By JLM

Sheet 7 of 15