

@ Sta. 143+81.48 (ext.), 56.00' Rt. =
 WL NO. 1 Sta. 43+77.75 (Back) =
 WL NO. 1 Sta. 43+59.49 (Ahead)

@ Sta. 144+05.62, 50.49' Rt. =
 WL NO. 1 Sta. 43+79.27
 Defl. = 00°01'56"
 Connect to exist. 12" DI Pipe

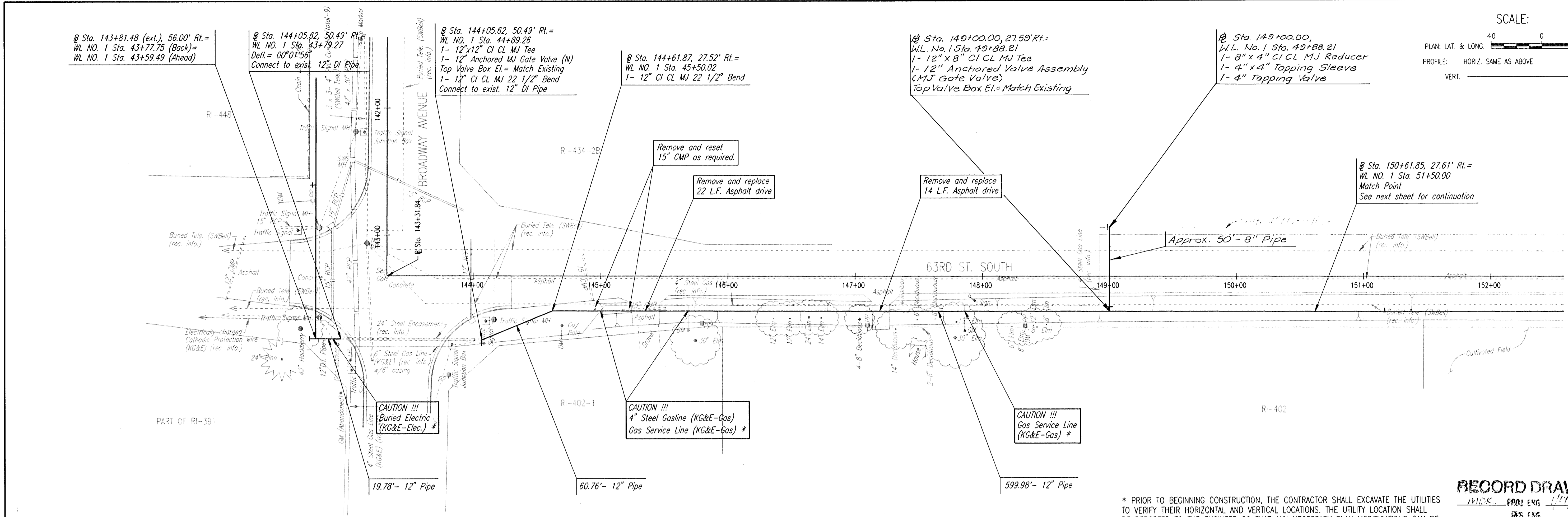
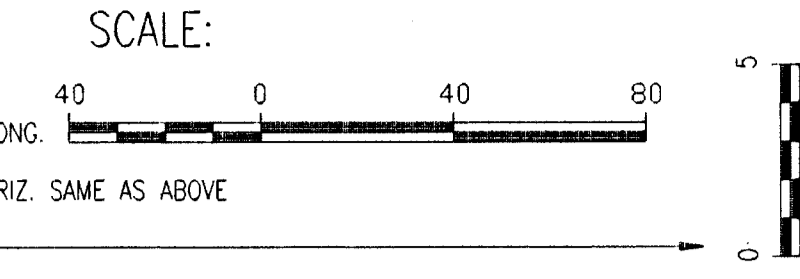
@ Sta. 144+05.62, 50.49' Rt. =
 WL NO. 1 Sta. 44+89.26
 1- 12" x 12" CI CL MJ Tee
 1- 12" Anchored MJ Gate Valve (N)
 Top Valve Box El. = Match Existing
 1- 12" CI CL MJ 22 1/2" Bend
 Connect to exist. 12" DI Pipe

@ Sta. 144+61.87, 27.52' Rt. =
 WL NO. 1 Sta. 45+50.02
 1- 12" CI CL MJ 22 1/2" Bend

@ Sta. 149+00.00, 27.59' Rt. =
 WL No. 1 Sta. 49+88.21
 1- 12" x 8" CI CL MJ Tee
 1- 12" Anchored Valve Assembly
 (MJ Gate Valve)
 Top Valve Box El. = Match Existing

@ Sta. 150+00.00,
 WL No. 1 Sta. 49+88.21
 1- 8" x 4" CI CL MJ Reducer
 1- 4" x 4" Tapping Sleeve
 1- 4" Tapping Valve

@ Sta. 150+61.85, 27.61' Rt. =
 WL NO. 1 Sta. 51+50.00
 Match Point
 See next sheet for continuation

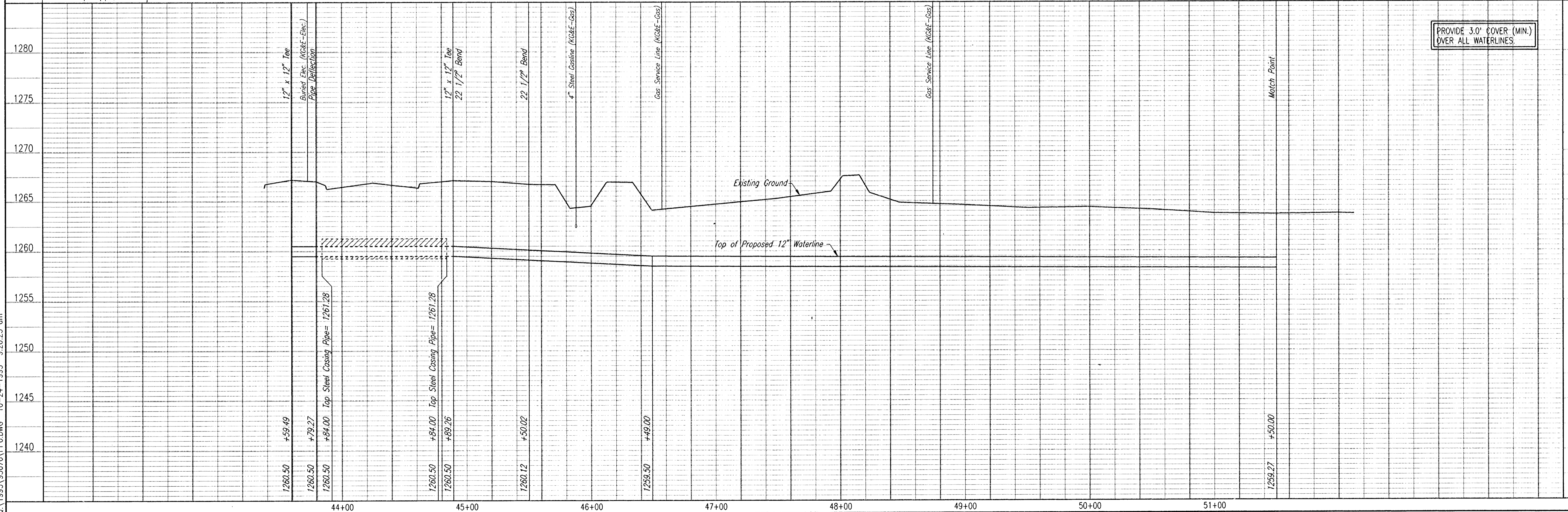
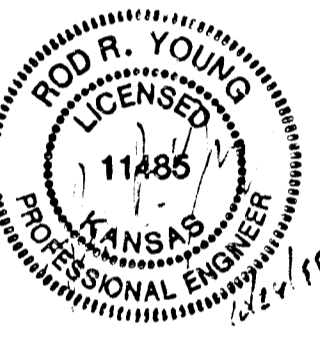


Unless noted otherwise, elevations shown are top of pipe

WATERLINE NO. 1

* PRIOR TO BEGINNING CONSTRUCTION, THE CONTRACTOR SHALL EXCAVATE THE UTILITIES TO VERIFY THEIR HORIZONTAL AND VERTICAL LOCATIONS. THE UTILITY LOCATION SHALL BE REPORTED TO THE ENGINEER SO THAT ANY NECESSARY PLAN MODIFICATIONS CAN BE MADE. ANY ADDITIONAL LABOR OR MATERIALS NECESSARY TO COMPLETE THE CONNECTIONS SHALL BE CONSIDERED SUBSIDIARY TO THE PROJECT.

RECORD DRAWING
 MKS. PPII ENG. DATE
 RES. ENG. DATE



PROVIDE 3.0' COVER (MIN.) OVER ALL WATERLINES

DSNR: REF. OPER. JLM SCALE: 1"=40.00
 C:\1995\95676\PP6.DWG 10-24-1995 9:20:25 am

CITY OF HAYSVILLE
 SEDWICK COUNTY, KANSAS
WATERLINE NO. 1
 HAYSVILLE EMERGENCY WATERLINE
 WATERLINE IMPROVEMENTS

PROFESSIONAL ENGINEERING CONSULTANTS, P.A.
 ENGINEERS
 WICHITA, KANSAS

Designed By: MKS, PPII Date: 3-4-95/76
 Drawn By: JLM Date: October 1995

Sheet 9 of 15