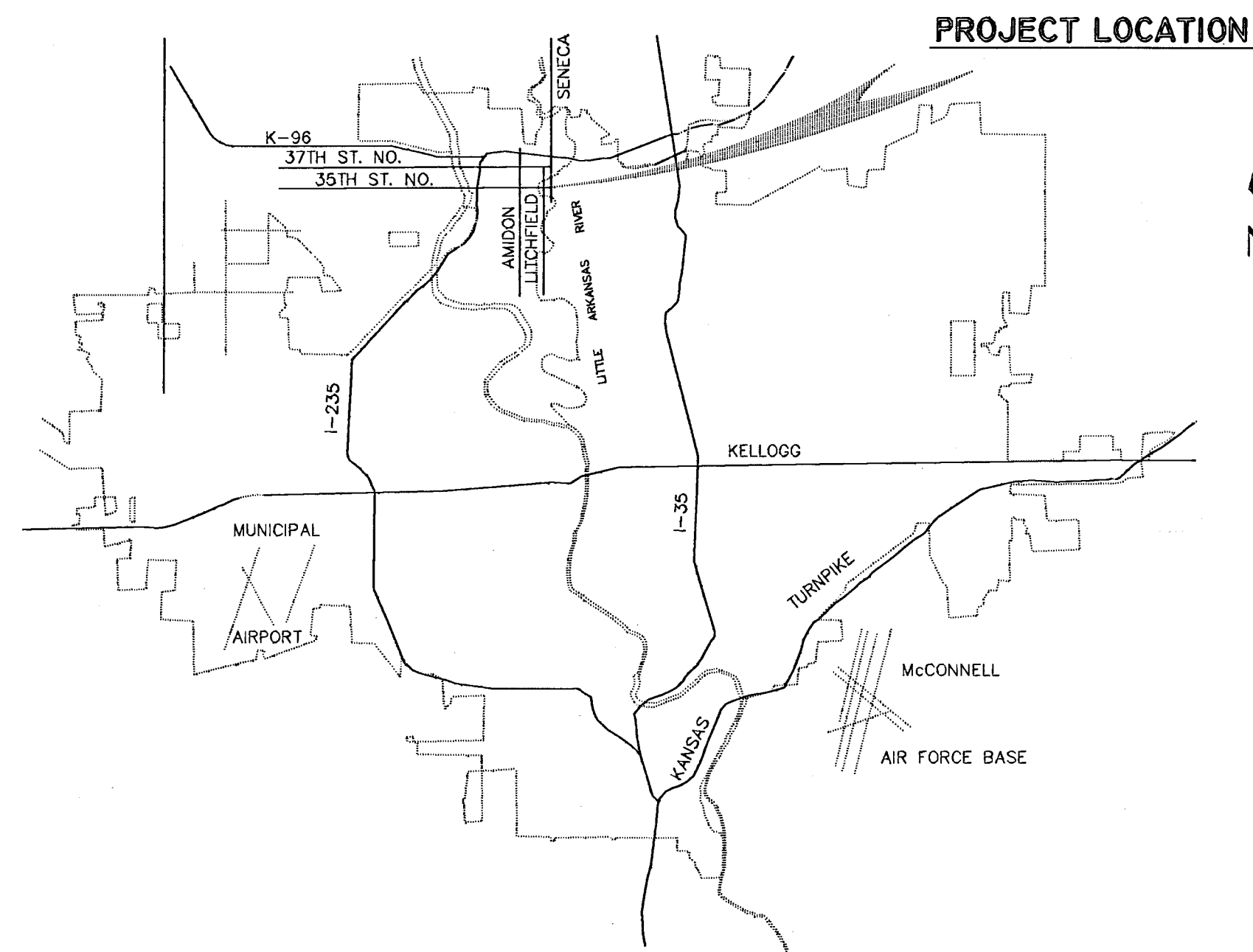


AutoCAD Drawing File Name 9324G-1A.DWG
 Archive Computer Disk # ACAD-DWG19
 Plot Scale 1=40



DRAINAGE SYSTEM IMPROVEMENTS

TO SERVE

SENECA AND 35TH ST. NO.

THE CITY OF WICHITA,

SEDGWICK COUNTY, KANSAS
 MICHAEL E. LINDEBAK, P.E.-CITY ENGINEER

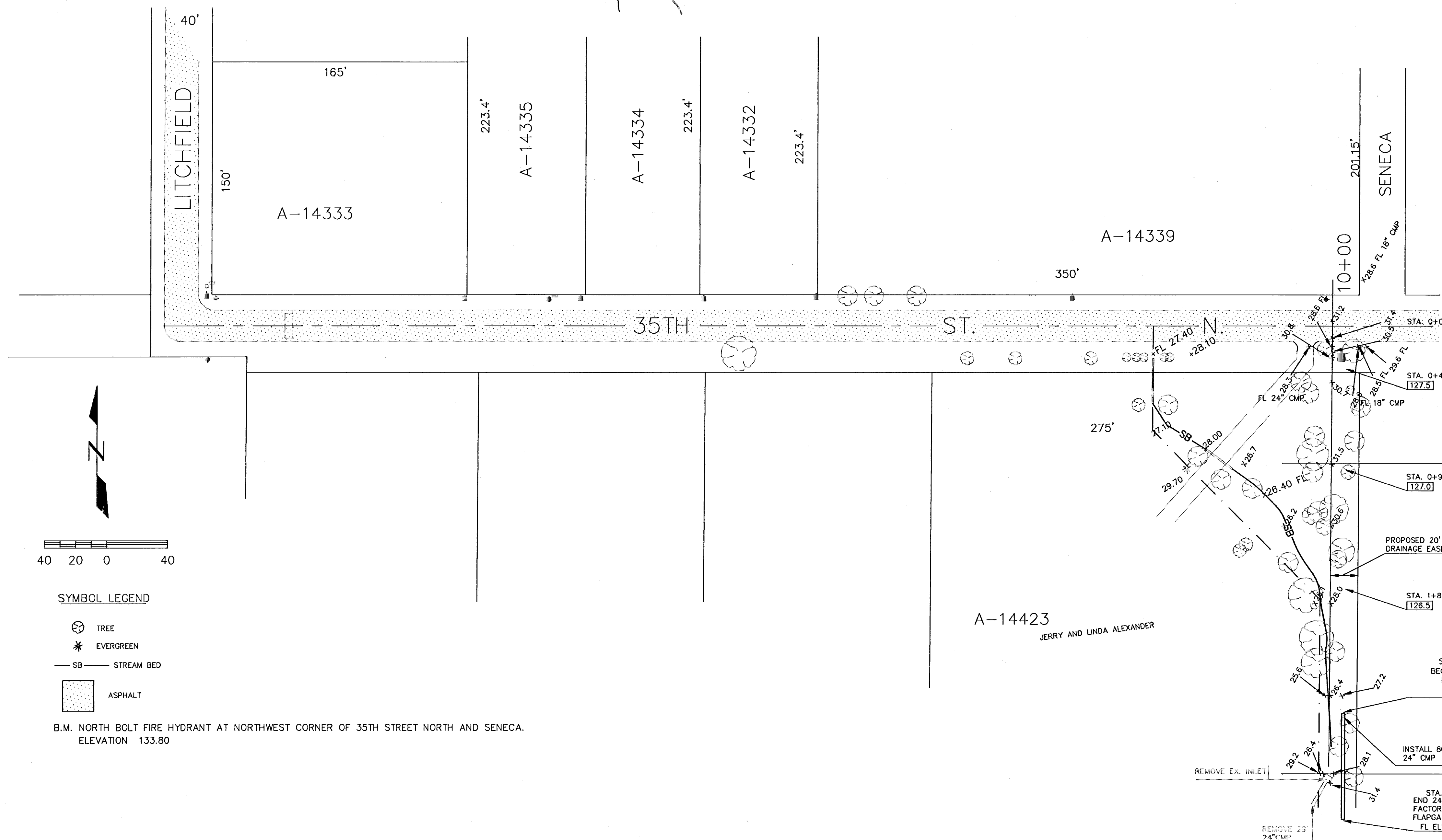
PHASE IV

INDEX CODE - 133108

CITY OF WICHITA PROJECT NO. 468 - 82369

APRIL, 1994

PLANS PREPARED BY
CASTLE & ASSOCIATES
 WICHITA, KANSAS



PROVIDE DRAINAGE WITHIN PROPOSED 20' DRAINAGE EASEMENT, GRADING AN IRREGULAR DITCH REMOVING TREES ONLY AS NECESSARY

SYMBOL LEGEND

- ⊗ TREE
- * EVERGREEN
- SB — STREAM BED
- ▨ ASPHALT

B.M. NORTH BOLT FIRE HYDRANT AT NORTHWEST CORNER OF 35TH STREET NORTH AND SENECA.
 ELEVATION 133.80



CITY OF WICHITA DRAINAGE IMPROVEMENTS	
SENECA AND 35TH ST. NO. DITCH/PIPE MODIFICATIONS	
CASTLE & ASSOCIATES ENGINEERS WICHITA, KANSAS	DSG DR CH APP
DWG FILE NO 9324G - D - 70,028	SHEET NO 1 OF 1
DATE APRIL 1994	REV.