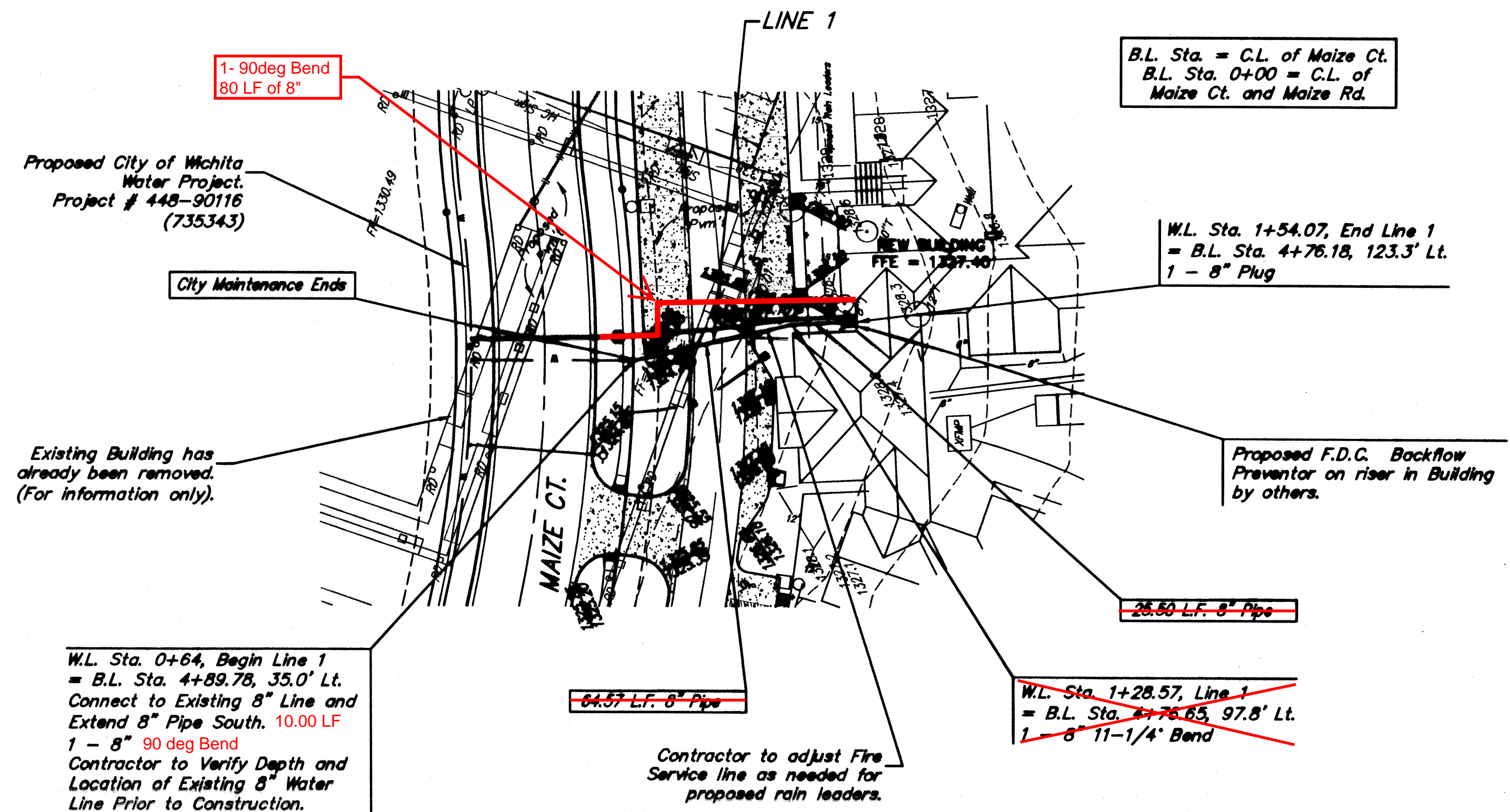


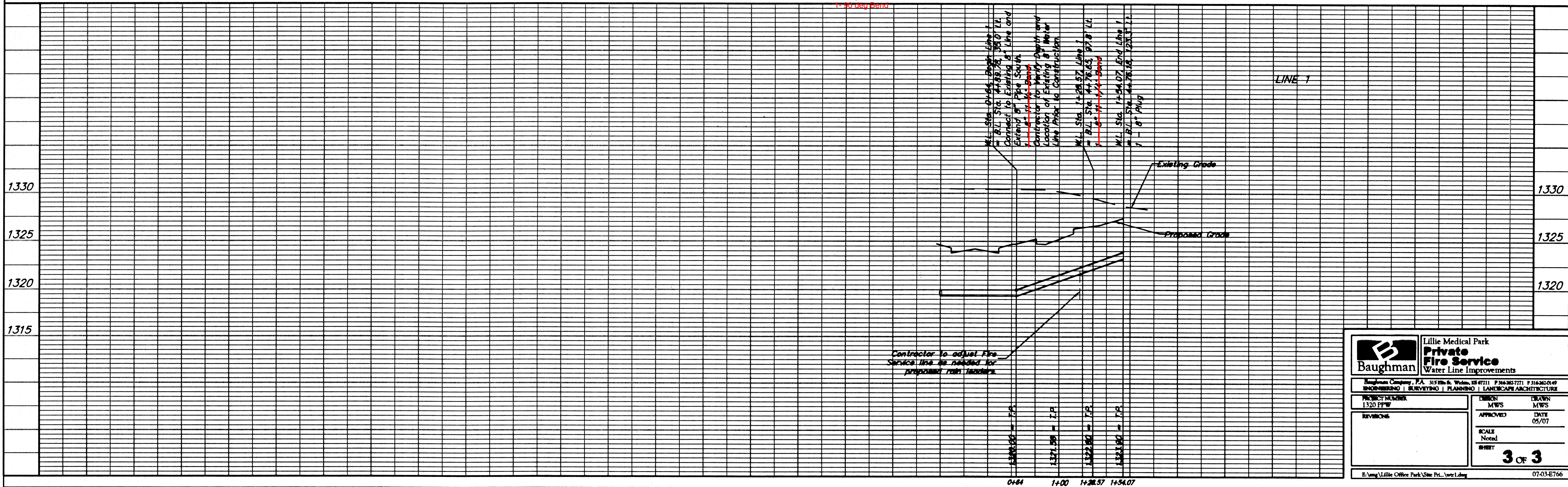
City Disc - Maize Road & McCormick (Hidden Valley) 0.5 Mi. South of Maple on the NE Corner of R.C.B.C Over Cowskin Creek, South of Hidden Valley Elev. = 1318.93 City Datum (1318.93 NGVD29)

NOTE:
Waterline Contractor to install plugs in waterline pipes @ Sta. 0+64 if City of Wichita Water Project isn't completed yet. Once City Project is completed, Waterline Contractor shall come back and make the tie-in and then flush the line.

Scale: 1" = 40' Horizontal
1" = 5' Vertical
• = Iron



*** All Grades are to Top of Pipe unless noted otherwise ***



Lillie Medical Park Private Fire Service Water Line Improvements	
Baughman Company, P.A. 315 E. 18th St., Wichita, KS 67211 P:316-262-7771 F:316-262-0169 ENGINEERING SURVEYING PLANNING LANDSCAPE ARCHITECTURE	
PROJECT NUMBER 1320 PFW	DRAWN MWS
REVISIONS	APPROVED DATE 05/07
SCALE Noted	SHEET 3 OF 3
E:\eng\Lillie Office Park\Site Plan\lwo1.dwg 07.03.07.66	