

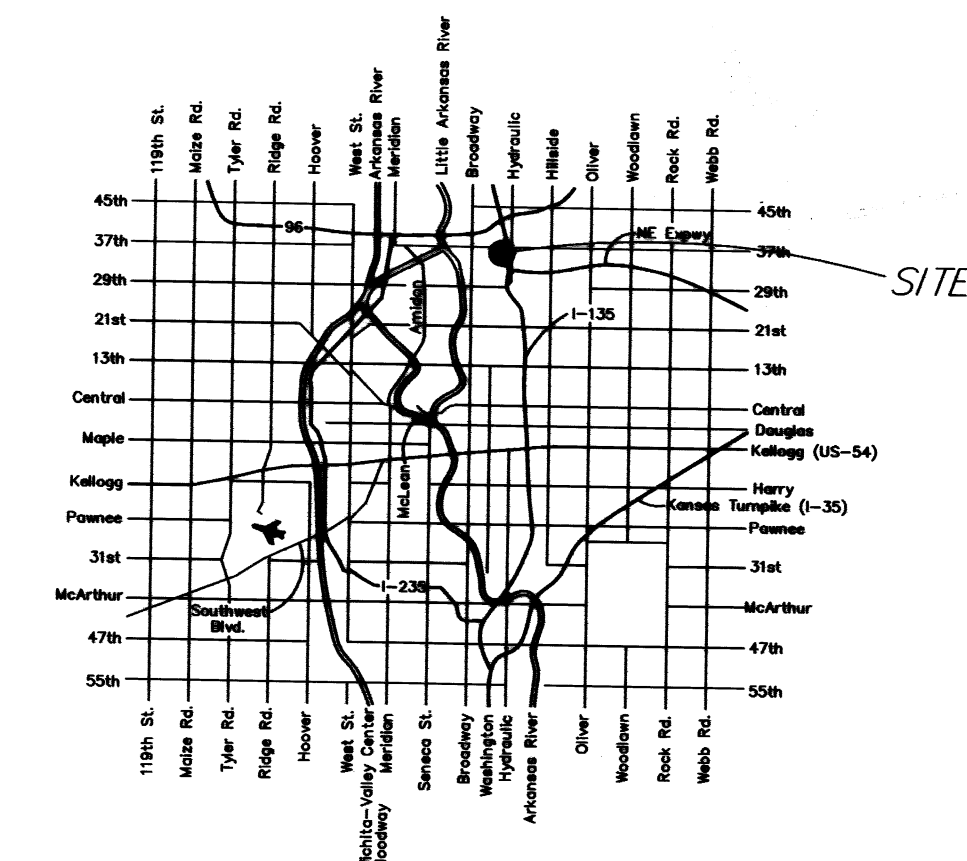
As Built Plans:

CONTRACTOR: Boardman Exc.
 INSPECTOR: Tom Jones, K E Miller Engineering
 .PDF by: NWS, 11-27-07

INDEX OF SHEETS

C3.1	PPW Cover
C3.2	PPW Plan & Profile
C3.3	Fire Hydrant Detail

FIRE LINE TO SERVE Piping and Equipment Lot 1, Blk 1, Bridgeport 3rd Industrial 37th Street North & Ohio Street 1348 PPW (607853) CITY OF WICHITA, KANSAS Jim Armour, P.E., City Engineer



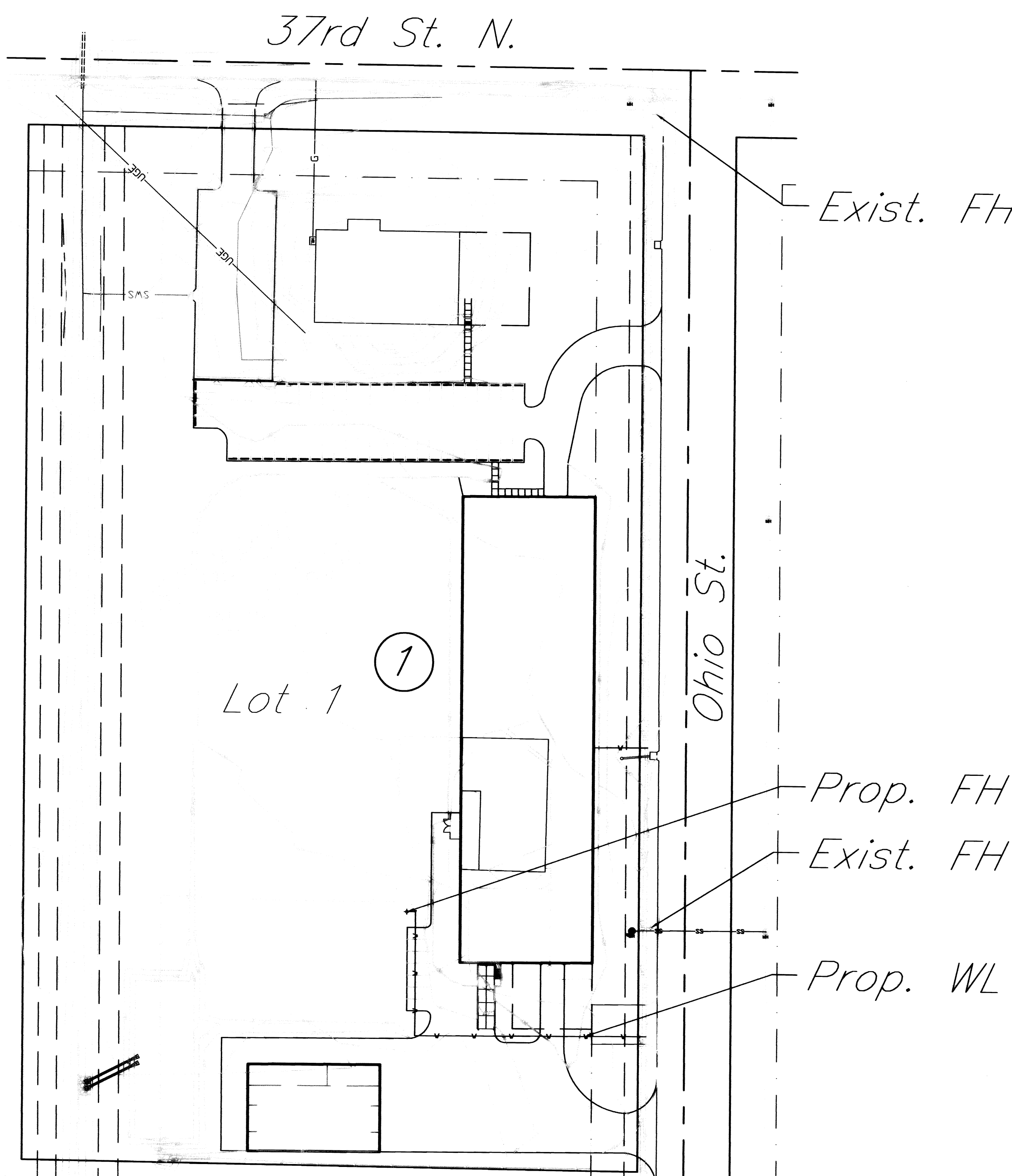
LOCATION MAP

Baseline
 Sta. 20+00 at the Intersection of
 37th Street North & Ohio St.
 following Ohio St. & Southward.

Benchmark:
 Square Cut on Southeast Corner of
 Inlet 525 feet South on Ohio St.
 from intersection of 37th Street North
 and Ohio Street.

GENERAL NOTES

- Contractor will be required to provide notice to utility companies a minimum of twenty-four (24) hours prior to any excavation, as follows:
 Kansas One-Call 687-2470
 The Contractor must notify the following in case of an emergency:
 Cox Communications 262-4270
 or 263-2061
 Westar Energy/
 Kansas Gas & Electric Company 1-888-482-4950
 Southwestern Bell Telephone Company 1-571-2611
 City of Wichita Water Department 268-4908
 City of Wichita Sewer Department 268-4071
 Aquila Natural Gas 941-1608
 or 1-800-303-0357
- Exist. utilities and their locations, as shown on the plans, represent the best information obtainable for design. Location information has been obtained from the various utility companies and is either from company record drawings or company-provided field locations. The Contractor will be required to work around existing utilities which do not conflict with proposed construction.
- The Contractor to verify utility locations prior to construction of this project.
- Utility service and installation shall be coordinated with the respective utility owners. Contacts are:
 Kansas Gas Service Jim Coe 832-3126
 Westar Energy Miles Capps 261-6251
 Aquila Networks Calvin Briggs 942-8811
 Wichita Water & Sewer Bill Perkins 268-4555
 Southwestern Bell Jim Toben 268-2759
 Cox Communications Mark Anaya 262-4270
- All lawn/turf areas disturbed by construction of proposed improvements shall be restored with seeding. All seeding work shall be in accordance with the City of Wichita standard specifications and the City of Wichita administrative regulation No. AR78 which governs cleanup and replacement following construction. All costs for this work shall be subsidiary to the lump sum price bid for "Site Restoration."
- Traffic affected by the construction of this project shall be handled in accordance with the latest edition of the Manual on Uniform Traffic Control Devices.
- It is the contractor's responsibility to visit this site to better understand the extent of site clearing and restoration to be performed. Site Clearing and Restoration shall include all costs for removal of items which a pay item is not provided.
- The contractor shall be responsible for preserving property irons. The contractor will be required to re-establish any property irons which are damaged or destroyed by his construction operations. Such irons shall be re-established by a licensed land surveyor in accordance with state laws.
- Properties within the project may have underground irrigation systems (lawn sprinklers) which conflict with the new construction. Contractor shall remove such components as needed during construction of the project. The irrigation system shall be reinstalled in like kind before project completion. Any irrigation system modifications required because of project improvements shall be coordinated with the property owner. Portions of underground irrigation systems not in conflict with construction shall be protected from damage and shall remain in place. All work related to underground irrigation/sprinklers shall be subsidiary to Site Restoration.
- Cuts made to paved surfaces on public property will be repaired by the City's contractor and charged against the owner / applicant. Unit repair Prices are available from the City at 268-4418. A surcharge may be applicable. Call 268-4418 for details. Repair costs to be paid prior to release of water service if water service is affected.



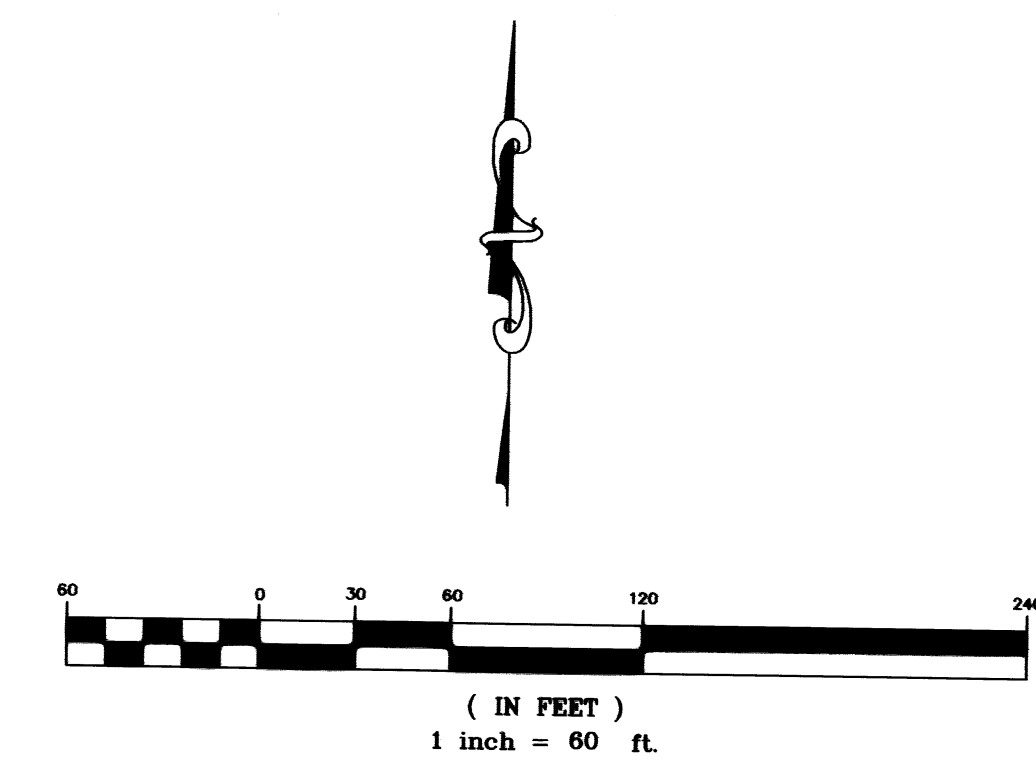
APPROVED AS NOTED
 BY CITY ENGINEER OF WICHITA,
 BY WICHITA WATER & SEWER DEPARTMENT,
 & BY WICHITA FIRE DEPARTMENT

Public Works: *[Signature]* 8/23/07
 Water & Sewer: *[Signature]*
 Fire: *[Signature]* 8-23-07

NOTE TO CONTRACTORS

Public Property:
 Inspection and testing for the materials to be provided by a Licensed Consulting Engineering Firm under contract with the Owner/Developer. Said inspection to be in accordance with the City of Wichita standard construction engineering practices and certified by a Professional Engineer Licensed in the state of Kansas. No work shall be performed in dedicated easements or public right-of-way by the Contractor without such inspection nor shall any work be commenced without written authorization by the City Engineer. All Construction and Materials shall comply with the City of Wichita Specifications and Standards (as file and available in the City Engineer's Office).

Private Property:
 Installation and testing for the fire protection line is to be performed by a City of Wichita Licensed fire protection contractor in accordance with the codes as adopted by the City of Wichita. All material and construction practices for the fire protection line shall comply with the fire codes as adopted by the City of Wichita (available from the City of Wichita Fire Department). The Contractor shall not commence work without notification and approval of the Wichita Fire Department. Inspection of the fire protection line is to be provided by a Licensed Engineering Firm under contract with the Owner/Developer and the Fire Department. The contractor shall not start work until the project inspector is equipped to the project and present on the site. Any work done without inspection will be required to be uncovered for inspection.



516 S. Market,
 Wichita, KS 67202 316/264-0242

Aug 2007



Architects
 1133 E. 2nd St.
 Wichita, KS 67214
 316.262.7435



**PIPING AND EQUIPMENT
 NEW BUILDING
 37TH STREET NORTH & OHIO STREET
 WICHITA, KANSAS**

Revisions:

--	--

Proj no: PPEN07100
 Date: 8/2007
 Sheet title:
 PPW Cover Page
 Drawn by: NS
 Checked by: KM

C3.1
 of
 © 2007 PBA Architects