

WILLOW PLACE 2ND ADDITION

WICHITA, SEDGWICK COUNTY, KANSAS

State of Kansas) SS We, Baughman Company, P.A., Surveyors in Sedgwick County) do hereby certify that we have surveyed and platted "WILLOW PLACE 2ND ADDITION", Wichita, Sedgwick County, Kansas and that the accompanying plat is a true and correct exhibit of the property surveyed, described as and being a replat of all of Lots 1 and 2, Sun-Air Estates, Sedgwick County, Kansas.

All being situated in the NE1/4 of Sec. 29, Twp. 26-S, R-2-E of the 6th P.M., Sedgwick County, Kansas.

Existing public easements and dedications being vacated by virtue of K.S.A. 12-512(b).

Baughman Company, P.A.

This plat of "WILLOW PLACE 2ND ADDITION", Wichita, Sedgwick County, Kansas has been submitted to and approved by the Wichita-Sedgwick County Metropolitan Area Planning Commission, Wichita, Kansas.

Dated this _____ day of _____, 2007.
Wichita-Sedgwick County Metropolitan Area Planning Commission

_____, Chair
Darrell A. Downing

_____, Secretary
John L. Schlegel

_____, Surveyor
Michael G. Conrey

This plat approved and all dedications shown hereon accepted by the City Council of the City of Wichita, Kansas, this _____ day of _____, 2007.

_____, Mayor
Carl Brewer

_____, City Clerk
Karen Sublett

Reviewed in accordance with K.S.A. 58-2005 on this _____ day of _____, 2007.

_____,
Tricia L. Robello, L.S. #1246
Deputy County Surveyor
Sedgwick County, Kansas

_____, President
Mike Brand

Entered on transfer record this _____ day of _____, 2007.

_____, County Clerk
Don Brace

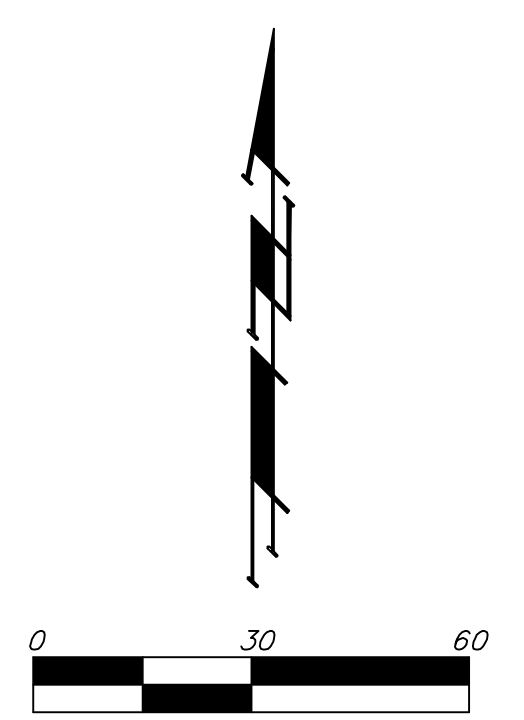
State of Kansas) SS The foregoing instrument acknowledged before me, this _____ day of _____, 2007, by Mike Brand, President of Forty-Fifth Street Properties, LLC, a Kansas limited liability company, on behalf of the limited liability company.

_____, Register of Deeds
Bill Meek

_____, Notary Public

_____, Deputy
Tonya Buckingham

My App't. Exp. _____

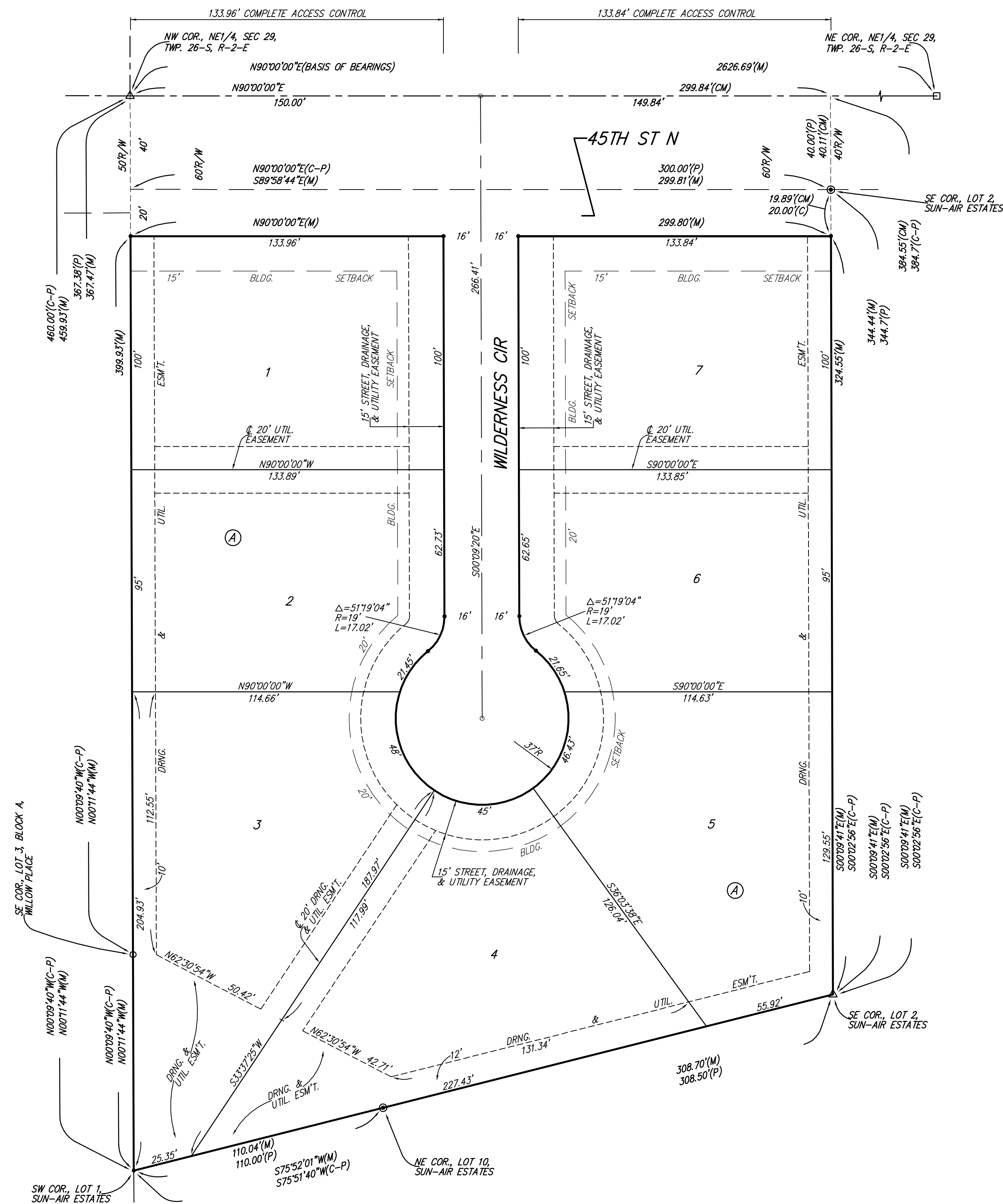


- = #4 REBAR W/ "BAUGHMAN" CAP (SET)
- △ = 3/4" IRON PIPE (FOUND)
- ⊙ = #4 REBAR W/ "ARMSTRONG" CAP (FOUND)
- = #4 REBAR W/ "BAUGHMAN" CAP (FOUND)
- = #5 REBAR W/ "GARBER" CAP (FOUND)

(M) = MEASURED
(P) = PLATTED
(C) = CALCULATED PER MEASURED INFO.
(CM) = CALCULATED PER PLATTED INFO.

Know all men by these presents that we, the undersigned, have caused the land in the surveyors certificate to be platted into Lots, a Block, and a Street, to be known as "WILLOW PLACE 2ND ADDITION", Wichita, Sedgwick County, Kansas. The utility easements are hereby granted as indicated for the construction and maintenance of all public utilities. The drainage and utility easements are hereby granted as indicated for drainage purposes and for the construction and maintenance of all public utilities. The street, drainage, and utility easements are hereby granted as indicated for street related purposes, for drainage purposes, and for the construction and maintenance of all public utilities. The street is hereby dedicated to and for the use of the public. Access controls shall be as depicted on the face of the plat and are hereby granted to the City of Wichita, Kansas.

Forty-Fifth Street Properties, LLC
a Kansas limited liability company



NOTE:
A drainage plan has been developed for this subdivision and is on file with the City of Wichita, Kansas. Drainage intent shall remain as depicted or as modified with the approval of the City Engineer of the City of Wichita, Kansas. No obstructions which impede the flow of this drainage plan shall be allowed.