

THE WATERFRONT RESIDENTIAL ADDITION

AN ADDITION TO WICHITA, SEDGWICK COUNTY, KANSAS

FINAL PLAT

Center, Sec. 9, T27S,
R2E, 6th P.M.,
Find 1/2" Bar w/ 1/4" Id cap

(ABANDONED) BURLINGTON NORTHERN SAN FRANCISCO RAIL ROAD
Formerly ST. LOUIS, WICHITA AND WESTERN RAIL ROAD COMPANY

N88°54'54"E 1326.83'(M.D.)

N88°54'48"E 1054.52'(W)

1024.41'(D)

1327.02'(CM)

1326.77'(CM)

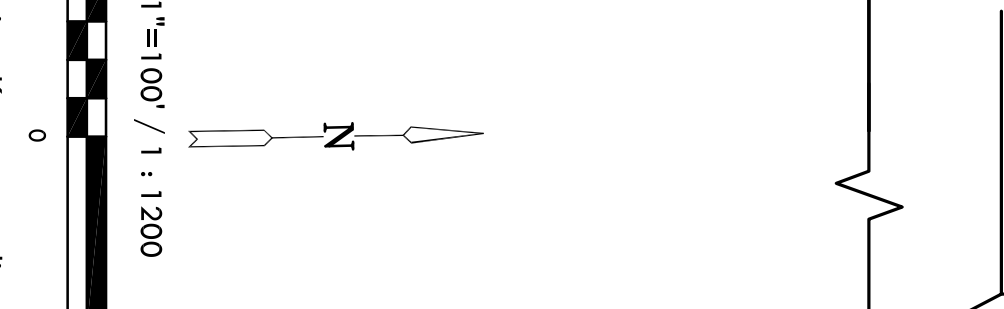
N88°54'47"E 2683.79'(W)

100.00'(D)

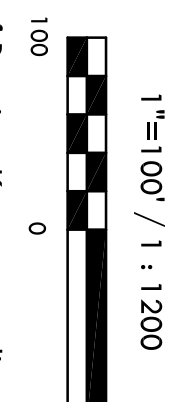
100.00'(D)

100.00'(D)

NE cor., SE 1/4, Sec. 9,
T27S, R2E, 6th P.M.,
Set 3/4" Bar w/ 1/4" Id cap
CIS 39 Id cap

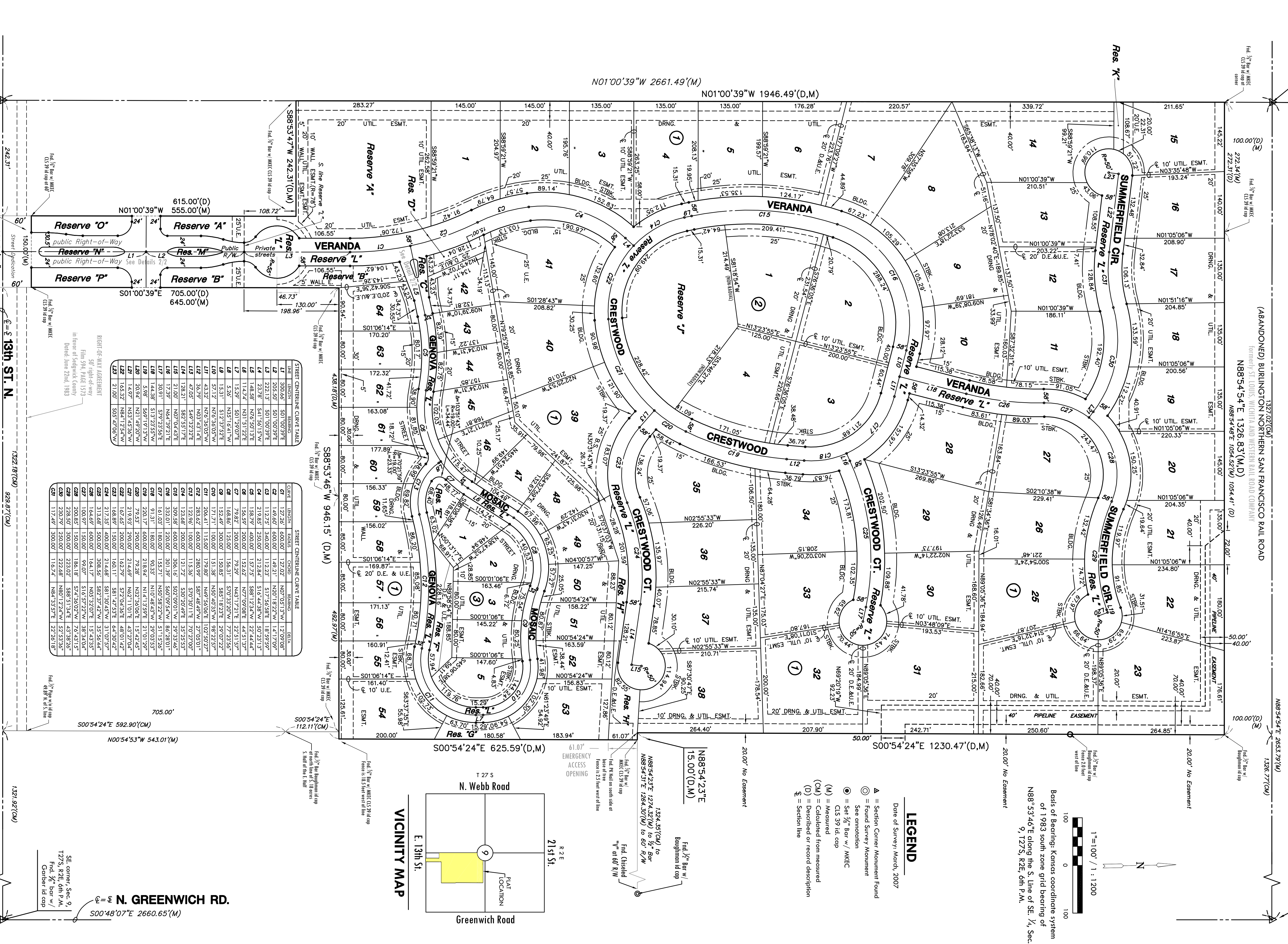


Basls of Bearing: Kansas coordinate system
of 1983 south zone grid bearing of
N88°53'46"E along the S. line of SE 1/4, Sec.
9, T27S, R2E, 6th P.M.



LEGEND

- Date of Survey: March, 2007
- A = Section Corner Measurement Found
 - ⊙ = Found Survey Monument
 - See annotation
 - ⊙ = Set 3/4" Bar w/ 1/4" Id cap
 - ⊙ = CIS 39 Id cap
 - (M) = Measured
 - (C) = Calculated from measured
 - (D) = Described or record description
 - = Section line



STREET CENTRELINE CURVE TABLE

STREET	STATION	BEARING	DATA
L1	300.00	S01°00'39"E	
L2	300.00	S01°00'39"E	
L3	300.00	S01°00'39"E	
L4	253.33	S01°00'39"E	
L5	253.33	S01°00'39"E	
L6	148.88	N67°50'13"E	
L7	148.88	N67°50'13"E	
L8	17.39	N64°39'21"E	
L9	30.91	S79°23'56"E	
L10	144.38	S13°23'55"W	
L11	3.58	S69°19'13"W	
L12	3.58	N01°32'51"E	
L13	42.05	S49°32'32"E	
L14	138.21	S82°55'17"E	
L15	21.00	N07°04'43"E	
L16	17.39	N64°39'21"E	
L17	30.91	S79°23'56"E	
L18	144.38	S13°23'55"W	
L19	3.58	S69°19'13"W	
L20	3.58	N01°32'51"E	
L21	42.05	S49°32'32"E	
L22	138.21	S82°55'17"E	
L23	21.00	N07°04'43"E	
L24	17.39	N64°39'21"E	
L25	30.91	S79°23'56"E	

STREET CENTRELINE CURVE TABLE

STREET	STATION	BEARING	DATA
C1	127.02	N07°05'13"W	1270.98'
C2	149.00	N49°21'00"W	1492.99'
C3	215.82	S20°00'00"E	2158.20'
C4	156.59	N57°25'00"E	1565.90'
C5	79.82	N07°09'08"E	798.20'
C6	168.86	N43°17'21"E	1688.60'
C7	151.49	S00°39'20"W	1514.90'
C8	171.71	N00°00'00"E	1717.10'
C9	208.41	N14°13'59"E	2084.10'
C10	122.96	N00°00'00"E	1229.60'
C11	123.86	S00°20'49"E	1238.60'
C12	309.58	S00°16'00"E	3095.80'
C13	333.01	S01°39'20"W	3330.10'
C14	161.03	N00°00'00"E	1610.30'
C15	220.00	S01°39'20"W	2200.00'
C16	161.03	N00°00'00"E	1610.30'
C17	220.00	S01°39'20"W	2200.00'
C18	91.31	N80°00'00"E	913.10'
C19	220.17	N00°00'00"E	2201.70'
C20	73.53	N02°10'00"E	735.30'
C21	162.65	S00°00'00"E	1626.50'
C22	168.89	S00°00'00"E	1688.90'
C23	217.35	S00°00'00"E	2173.50'
C24	164.69	S00°00'00"E	1646.90'
C25	200.85	S00°00'00"E	2008.50'
C26	100.97	S00°00'00"E	1009.70'
C27	200.85	S00°00'00"E	2008.50'
C28	100.97	S00°00'00"E	1009.70'
C29	200.85	S00°00'00"E	2008.50'
C30	100.97	S00°00'00"E	1009.70'
C31	117.49	S00°00'00"E	1174.90'

S. 1/4 corner, Sec. 9,
T27S, R2E, 6th P.M.,
Find 3/4" Bar w/
Cerber Id cap

1/2" Bar w/ 1/4" Id cap
CIS 39 Id cap

1/2" Bar w/ 1/4" Id cap
CIS 39 Id cap

1/2" Bar w/ 1/4" Id cap
CIS 39 Id cap

1/2" Bar w/ 1/4" Id cap
CIS 39 Id cap

1/2" Bar w/ 1/4" Id cap
CIS 39 Id cap

1/2" Bar w/ 1/4" Id cap
CIS 39 Id cap

S. 1/4 corner, Sec. 9,
T27S, R2E, 6th P.M.,
Find 3/4" Bar w/
Cerber Id cap

1/2" Bar w/ 1/4" Id cap
CIS 39 Id cap

1/2" Bar w/ 1/4" Id cap
CIS 39 Id cap

1/2" Bar w/ 1/4" Id cap
CIS 39 Id cap

1/2" Bar w/ 1/4" Id cap
CIS 39 Id cap

1/2" Bar w/ 1/4" Id cap
CIS 39 Id cap

1/2" Bar w/ 1/4" Id cap
CIS 39 Id cap

1/2" Bar w/ 1/4" Id cap
CIS 39 Id cap

1/2" Bar w/ 1/4" Id cap
CIS 39 Id cap

1/2" Bar w/ 1/4" Id cap
CIS 39 Id cap

1/2" Bar w/ 1/4" Id cap
CIS 39 Id cap

1/2" Bar w/ 1/4" Id cap
CIS 39 Id cap

1/2" Bar w/ 1/4" Id cap
CIS 39 Id cap

1/2" Bar w/ 1/4" Id cap
CIS 39 Id cap

1/2" Bar w/ 1/4" Id cap
CIS 39 Id cap

1/2" Bar w/ 1/4" Id cap
CIS 39 Id cap

1/2" Bar w/ 1/4" Id cap
CIS 39 Id cap

1/2" Bar w/ 1/4" Id cap
CIS 39 Id cap

1/2" Bar w/ 1/4" Id cap
CIS 39 Id cap

1/2" Bar w/ 1/4" Id cap
CIS 39 Id cap

1/2" Bar w/ 1/4" Id cap
CIS 39 Id cap

1/2" Bar w/ 1/4" Id cap
CIS 39 Id cap

1/2" Bar w/ 1/4" Id cap
CIS 39 Id cap

1/2" Bar w/ 1/4" Id cap
CIS 39 Id cap

1/2" Bar w/ 1/4" Id cap
CIS 39 Id cap

1/2" Bar w/ 1/4" Id cap
CIS 39 Id cap

1/2" Bar w/ 1/4" Id cap
CIS 39 Id cap

1/2" Bar w/ 1/4" Id cap
CIS 39 Id cap

1/2" Bar w/ 1/4" Id cap
CIS 39 Id cap

1/2" Bar w/ 1/4" Id cap
CIS 39 Id cap

1/2" Bar w/ 1/4" Id cap
CIS 39 Id cap

1/2" Bar w/ 1/4" Id cap
CIS 39 Id cap

1/2" Bar w/ 1/4" Id cap
CIS 39 Id cap

1/2" Bar w/ 1/4" Id cap
CIS 39 Id cap

1/2" Bar w/ 1/4" Id cap
CIS 39 Id cap

1/2" Bar w/ 1/4" Id cap
CIS 39 Id cap

1/2" Bar w/ 1/4" Id cap
CIS 39 Id cap

1/2" Bar w/ 1/4" Id cap
CIS 39 Id cap

1/2" Bar w/ 1/4" Id cap
CIS 39 Id cap

1/2" Bar w/ 1/4" Id cap
CIS 39 Id cap

1/2" Bar w/ 1/4" Id cap
CIS 39 Id cap

1/2" Bar w/ 1/4" Id cap
CIS 39 Id cap

1/2" Bar w/ 1/4" Id cap
CIS 39 Id cap

1/2" Bar w/ 1/4" Id cap
CIS 39 Id cap

1/2" Bar w/ 1/4" Id cap
CIS 39 Id cap

1/2" Bar w/ 1/4" Id cap
CIS 39 Id cap

1/2" Bar w/ 1/4" Id cap
CIS 39 Id cap

1/2" Bar w/ 1/4" Id cap
CIS 39 Id cap

1/2" Bar w/ 1/4" Id cap
CIS 39 Id cap

1/2" Bar w/ 1/4" Id cap
CIS 39 Id cap

411 N. WEBB ROAD
WICHITA, KS. 67206
316-684-9600
MKEC ENGINEERING CONSULTANTS, INC.

1/2" Bar w/ 1/4" Id cap
CIS 39 Id cap

1/2" Bar w/ 1/4" Id cap
CIS 39 Id cap

1/2" Bar w/ 1/4" Id cap
CIS 39 Id cap

1/2" Bar w/ 1/4" Id cap
CIS 39 Id cap

1/2" Bar w/ 1/4" Id cap
CIS 39 Id cap

1/2" Bar w/ 1/4" Id cap
CIS 39 Id cap

1/2" Bar w/ 1/4" Id cap
CIS 39 Id cap

1/2" Bar w/ 1/4" Id cap
CIS 39 Id cap

1/2" Bar w/ 1/4" Id cap
CIS 39 Id cap

1/2" Bar w/ 1/4" Id cap
CIS 39 Id cap

1/2" Bar w/ 1/4" Id cap
CIS 39 Id cap

1/2" Bar w/ 1/4" Id cap
CIS 39 Id cap

1/2" Bar w/ 1/4" Id cap
CIS 39 Id cap

1/2" Bar w/ 1/4" Id cap
CIS 39 Id cap

1/2" Bar w/ 1/4" Id cap
CIS 39 Id cap

1/2" Bar w/ 1/4" Id cap
CIS 39 Id cap

1/2" Bar w/ 1/4" Id cap
CIS 39 Id cap

1/2" Bar w/ 1/4" Id cap
CIS 39 Id cap

1/2" Bar w/ 1/4" Id cap
CIS 39 Id cap

1/2" Bar w/ 1/4" Id cap
CIS 39 Id cap

1/2" Bar w/ 1/4" Id cap
CIS 39 Id cap

1/2" Bar w/ 1/4" Id cap
CIS 39 Id cap

1/2" Bar w/ 1/4" Id cap
CIS 39 Id cap

1/2" Bar w/ 1/4" Id cap
CIS 39 Id cap

1/2" Bar w/ 1/4" Id cap
CIS 39 Id cap

1/2" Bar w/ 1/4" Id cap
CIS 39 Id cap

1/2" Bar w/ 1/4" Id cap
CIS 39 Id cap

1/2" Bar w/ 1/4" Id cap
CIS 39 Id cap

1/2" Bar w/ 1/4" Id cap
CIS 39 Id cap

1/2" Bar w/ 1/4" Id cap
CIS 39 Id cap

1/2" Bar w/ 1/4" Id cap
CIS 39 Id cap

1/2" Bar w/ 1/4" Id cap
CIS 39 Id cap

1/2" Bar w/ 1/4" Id cap
CIS 39 Id cap

1/2" Bar w/ 1/4" Id cap
CIS 39 Id cap

1/2" Bar w/ 1/4" Id cap
CIS 39 Id cap

1/2" Bar w/ 1/4" Id cap
CIS 39 Id cap

1/2" Bar w/ 1/4" Id cap
CIS 39 Id cap

1/2" Bar w/ 1/4" Id cap
CIS 39 Id cap

1/2" Bar w/ 1/4" Id cap
CIS 39 Id cap

1/2" Bar w/ 1/4" Id cap
CIS 39 Id cap

1/2" Bar w/ 1/4" Id cap
CIS 39 Id cap

1/2" Bar w/ 1/4" Id cap
CIS 39 Id cap

1/2" Bar w/ 1/4" Id cap
CIS 39 Id cap

1/2" Bar w/ 1/4" Id cap
CIS 39 Id cap

1/2" Bar w/ 1/4" Id cap
CIS 39 Id cap

1/2" Bar w/ 1/4" Id cap
CIS 39 Id cap

1/2" Bar w/ 1/4" Id cap
CIS 39 Id cap

1/2" Bar w/ 1/4" Id cap
CIS 39 Id cap

1/2" Bar w/ 1/4" Id cap
CIS 39 Id cap

1/2" Bar w/ 1/4" Id cap
CIS 39 Id cap