

PAVING FOR MARBLEFALLS W/ INCIDENTAL SWS IMPROVEMENTS

to serve

FALCON FALLS 2ND ADD. - PH. II

**Marblefalls, from the south line of Lot 38, Block C
south to the southeast line of Lot 19, Block A
Lanners, from the west line of Marblefalls
west to the east line of Saker
Saker, from the north line of Lanners
south to the south line of Lot 32, Block E
Saker Cir., from the north line of Saker
north to and including the cul-de-sac**

CITY OF WICHITA, KANSAS

James L. Armour, P.E. City Engineer

Project Number

472-84265

O.C.A. Number:

766170

GENERAL NOTES:

1. Contractor will be required to provide notice to utility companies a minimum of forty-eight (48) hours prior to any excavation, as follows:

Kansas One-Call 687-2470

The Contractor must notify the following in case of an emergency:

Cox Communications	262-4270
Kansas Gas Service	1-888-482-4950
Westar Energy	383-8650
Aquila Energy	1-800-303-0357
SBC	268-2245
City of Wichita Water Dept.	268-4563
City of Wichita Sewer Maint.	268-4024
City of Wichita Storm Sewer Maint.	268-4090
City of Wichita Traffic Maint.	268-4034
Conoco Phillips Pipeline Co.	1-877-267-2290
Southern Star Pipeline Co.	529-6600
Kinder-Morgan Pipeline Co.	1-888-844-5638

2. Utility service lines, poles, valve boxes, meters, and etcetera are to be adjusted as necessary by others prior to construction unless the plans specifically call for their adjustment by the Contractor or unless the plans specifically identify a utility to be adjusted by its owner during construction. Existing utilities and their location, as shown on the plans, represent the best information obtainable for design. The Contractor will be required to work around existing utilities within the right-of-way which do not conflict with proposed construction.

3. Rubble from the removal of miscellaneous structures and excess excavation which is to be wasted shall be disposed of on sites to be provided by the Contractor. These sites shall be approved by the Engineer as to suitability, appearance and site location. Locations, in the opinion of the Engineer, that will leave an unsightly appearance will not be approved. All disposal sites must be approved by the Kansas Department of Health and Environment. Material either stockpiled or disposed of in a flood plain would require a Kansas State Board of Agriculture permit. Any material dumped in waters of the United States or wetlands is subject to U.S. Corps. of Engineers permitting regulations. Any material buried or stockpiled beyond approved construction limits would require additional archaeological investigations unless buried in a previously approved borrow location.

4. Trees and shrubs in public right-of-way which are in direct conflict with proposed new construction shall be removed by the Contractor with the Engineer's approval. Trees and shrubs which are not in direct conflict with proposed new construction shall be saved and protected from damage.

5. The Contractor shall give all property owners and/or tenants of developed property abutting the construction of this project a minimum of ten (10) days notice prior to start of construction.

6. The Contractor shall be responsible for preserving property irons. The Contractor will be required to re-establish any property irons which are damaged or destroyed by his construction operations. Such irons shall be re-established by a licensed land surveyor in accordance with state laws.

7. All existing and proposed erosion control measures including silt fencing, erosion control mat, straw bales, inlet barriers, and const. entrance shall be maintained throughout construction by the contractor and until project is accepted by the City of Wichita. The on-site engineer shall complete weekly reports on the status of erosion control measures. The contractor shall be required to comply with maintenance and/or replacement of erosion control measures as determined by the on-site engineer until project is accepted by City of Wichita. Maintenance and/or replacement of erosion control measures to be paid by L.S. bid item "Site Clearing & Restoration".

8. A saw cut of at least one-half the depth of existing surface courses or one-fourth the depth of the existing total pavement thickness shall be provided at locations where proposed construction abuts the existing surface course or pavement for which partial removal of that surface or pavement is required. Sawed joint to facilitate removal within three (3) feet of existing joints will not be permitted and for such instances the limits of removal shall extend to the existing joint. Such saw cuts will not be paid for directly and this cost shall be considered as subsidiary to the removal of the surface or pavement.

9. The contractor shall adjust valve boxes as necessary to match proposed grade. Cost to be included in bid item, "Site Clearing & Restoration."

10. All areas disturbed during construction shall be seeded at 300 lbs./acre with Rye Grass immediately following construction in that area. Contractor shall prepare ground per City Specifications.

11. The developer for this project is Jay Russell, (316) 722-2417

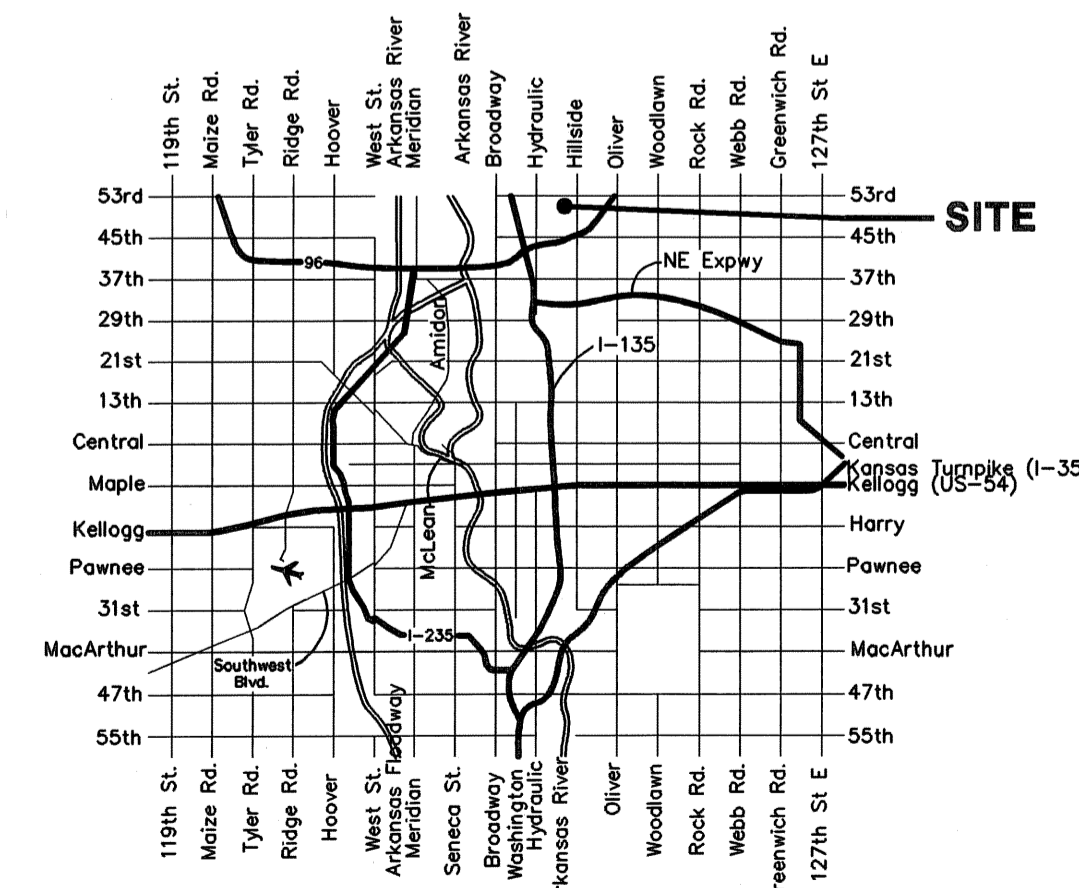
SHEET INDEX

Title Sheet	1
29' Pavement Detail	2
35' Pavement Detail	3
Sign Detail	4
Miscellaneous Details	5
Marblefalls	6-7
Saker/Lanners	8-9
Saker Cir.	10
SWS Line 1	11-14
SWS Line 1A	15
SWS Line 2	16
SWS Line 2A	17
Std. Type 1A Single Inlet Detail	18
Std. Type 1A Double Inlet Detail	19
Special Yard Inlet Detail	20
Std. Shallow Manhole Detail	21
Ring and Cover Detail	22
Std. Drop Inlet Detail	23
Erosion Control/Esmt. Grading Plan	24
Soil Erosion BMPs	25-28
Coordinate Sheet	29
Street X-Sections	30-34
Copy of Plat	35

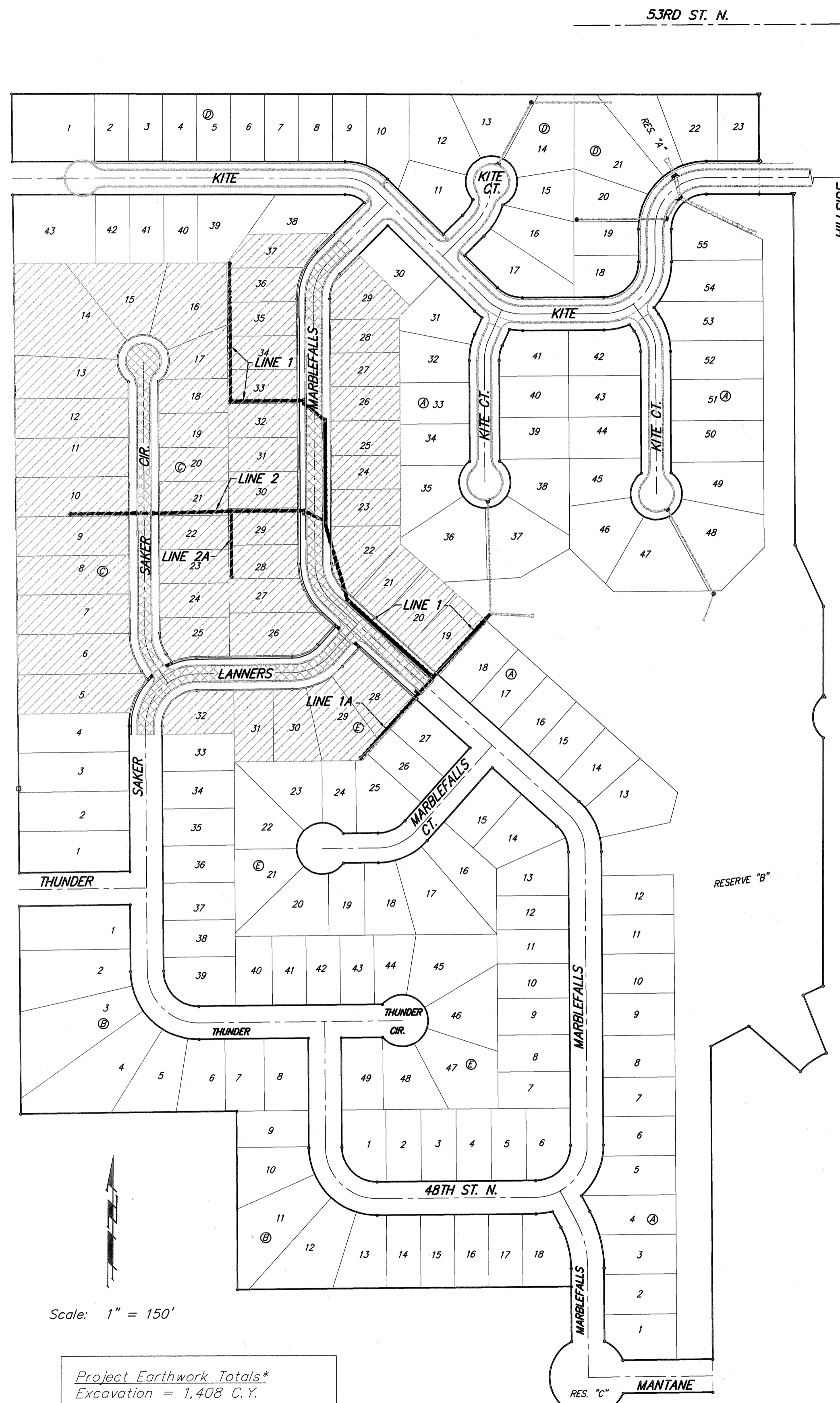
BENCHMARKS

BM #1: "□" CL face of catch basin, west side of Lot 4, Block 5, Falcon Falls Addition. Elev. = 1352.47 MSL

BM #2: "□" south end of the south curb return at Kite and Peregrine, Falcon Falls Addition. Elev. = 1359.85 MSL



Vicinity Map



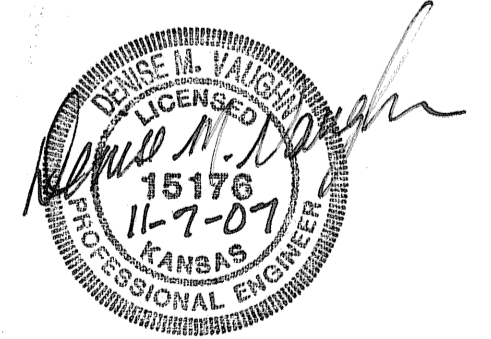
Scale: 1" = 150'

*Project Earthwork Totals**
Excavation = 1,408 C.Y.
Loose Fill = 640 C.Y.
Compacted Fill = 232 C.Y.
* Does not include esmt. grading quantities

Total Project Length
2,132 L.F. = 0.40 Miles

Benefit District:

Proposed Streets:



Baughman Company, P.A. 315 Ellis St. Wichita, KS 67211 P 316-262-7271 F 316-262-0145

ENGINEERING | SURVEYING | PLANNING | LANDSCAPE ARCHITECTURE