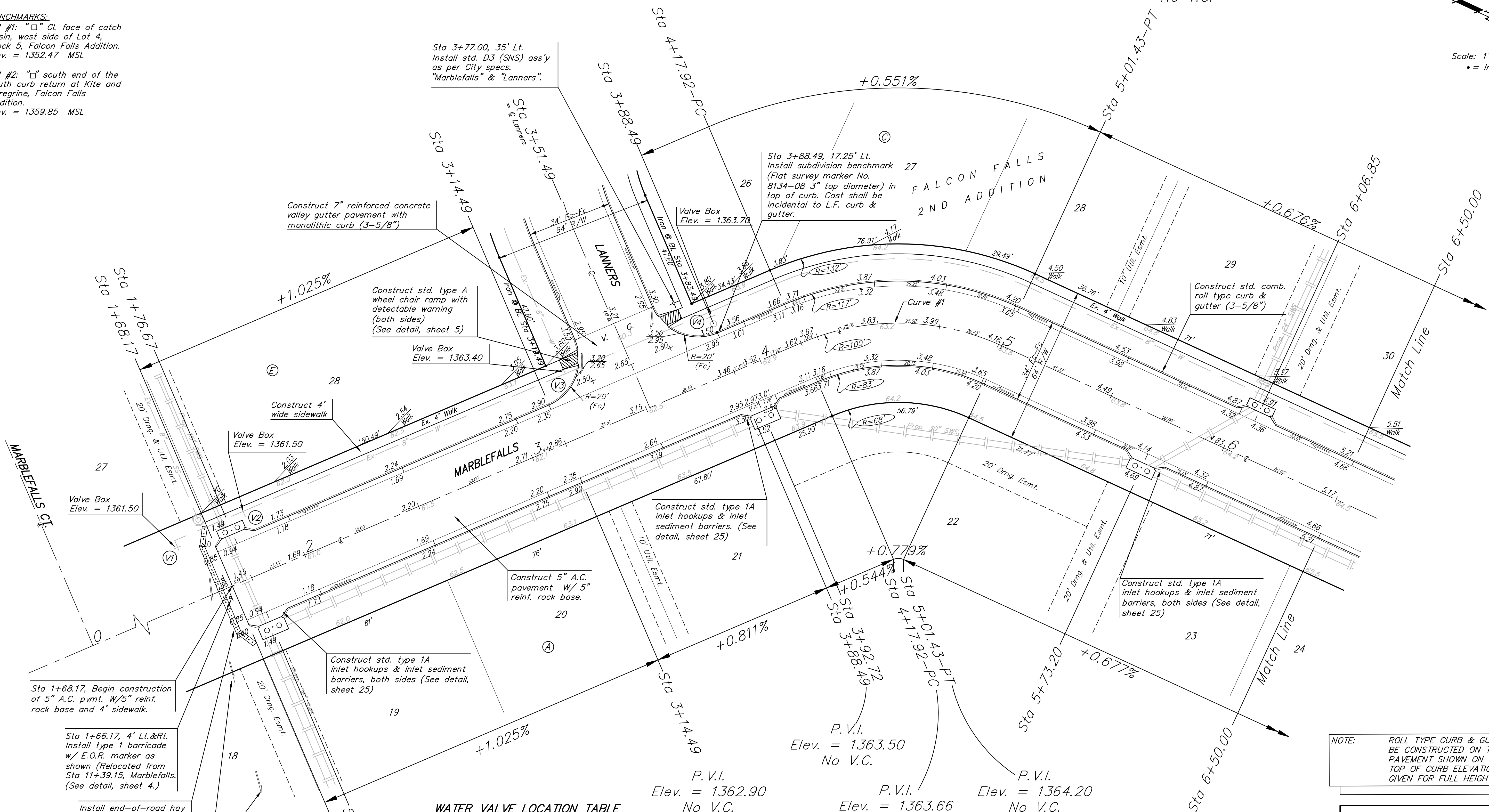
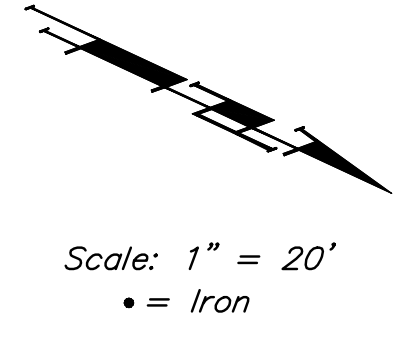


BENCHMARKS:
 BM #1: "□" CL face of catch basin, west side of Lot 4, Block 5, Falcon Falls Addition. Elev. = 1352.47 MSL
 BM #2: "□" south end of the south curb return at Kite and Peregrine, Falcon Falls Addition. Elev. = 1359.85 MSL

P.V.I.
 Elev. = 1364.20
 No V.C.



Sta 3+77.00, 35' Lt. Install std. D3 (SNS) ass'y as per City specs. "Marblefalls" & "Lanners".

Sta 3+88.49, 17.25' Lt. Install subdivision benchmark 27 (Flat survey marker No. 8134-08 3" top diameter) in top of curb. Cost shall be incidental to L.F. curb & gutter.

Construct 7" reinforced concrete valley gutter pavement with monolithic curb (3-5/8")

Construct std. type A wheel chair ramp with detectable warning (both sides) (See detail, sheet 5)

Construct std. comb. roll type curb & gutter (3-5/8")

Construct 4' wide sidewalk

Construct std. type 1A inlet hookups & inlet sediment barriers. (See detail, sheet 25)

Construct 5" A.C. pavement w/ 5" reinf. rock base.

Construct std. type 1A inlet hookups & inlet sediment barriers, both sides (See detail, sheet 25)

Sta 1+68.17, Begin construction of 5" A.C. pvm't. W/5" reinf. rock base and 4' sidewalk.

Sta 1+66.17, 4' Lt.&Rt. Install type 1 barricade w/ E.O.R. marker as shown (Relocated from Sta 11+39.15, Marblefalls. (See detail, sheet 4.)

Install end-of-road hay bale sediment barriers. See detail, sheet 25.

Contractor to construct temporary ditch 200' NE to existing pond to ensure positive drainage of pavement runoff. Cost to be included in "Site Clearing & Restoration."

WATER VALVE LOCATION TABLE

VALVE NUMBER	BASELINE STATION	OFFSET DISTANCE	OFFSET DIRECTION
V1	1+54.00	23'	Lt.
V2	1+84.00	26'	Lt.
V3	3+25.49	28'	Lt.
V4	3+88.49	24'	Lt.

Paving contractor will be responsible to operate all water valves on the project, in the presence of the inspector, to ensure accessibility to the valves, and that all valves are left in the "ON" position when the project is completed.

Curve #1
 Curve Data Based on Centerline
 Rad. = 100' Delta = 47° 50' 49" Tangent = 44.36'
 Arc = 83.51' L.C. = 81.10' Def/Ft. = 17.18846 Min.

Station	FACE CHORD LENGTHS		Defl.	T. Defl.
	8' Lt.	8' Rt.		
4+17.92	-	-	0°00'00"	0°00'00"
4+25.00	7.08'	8.85'	2°01'41"	2°01'41"
4+50.00	25.00'	31.17'	18.70'	7°09'42"
4+75.00	25.00'	31.17'	18.70'	7°09'42"
5+00.00	25.00'	31.17'	18.70'	7°09'42"
5+01.43	1.43'	1.79'	1.07'	0°24'35"

NOTE: ROLL TYPE CURB & GUTTER TO BE CONSTRUCTED ON THE PAVEMENT SHOWN ON THIS SHEET. TOP OF CURB ELEVATIONS ARE GIVEN FOR FULL HEIGHT CURB.

Baughman ENGINEERING | SURVEYING | PLANNING | LANDSCAPE ARCHITECTURE
 FALCON FALLS 2ND ADD. - PH. II
MARBLEFALLS
 STA 1+68.17 TO STA 6+50.00

PROJECT NUMBER: 41284265
 DESIGN: AEG
 DRAWN: TMS
 APPROVED: DATE: 11/07
 SCALE: Noted
 SHEET: **6 OF 35**

FalconFalls2ndPHII/Str1 0601-E463