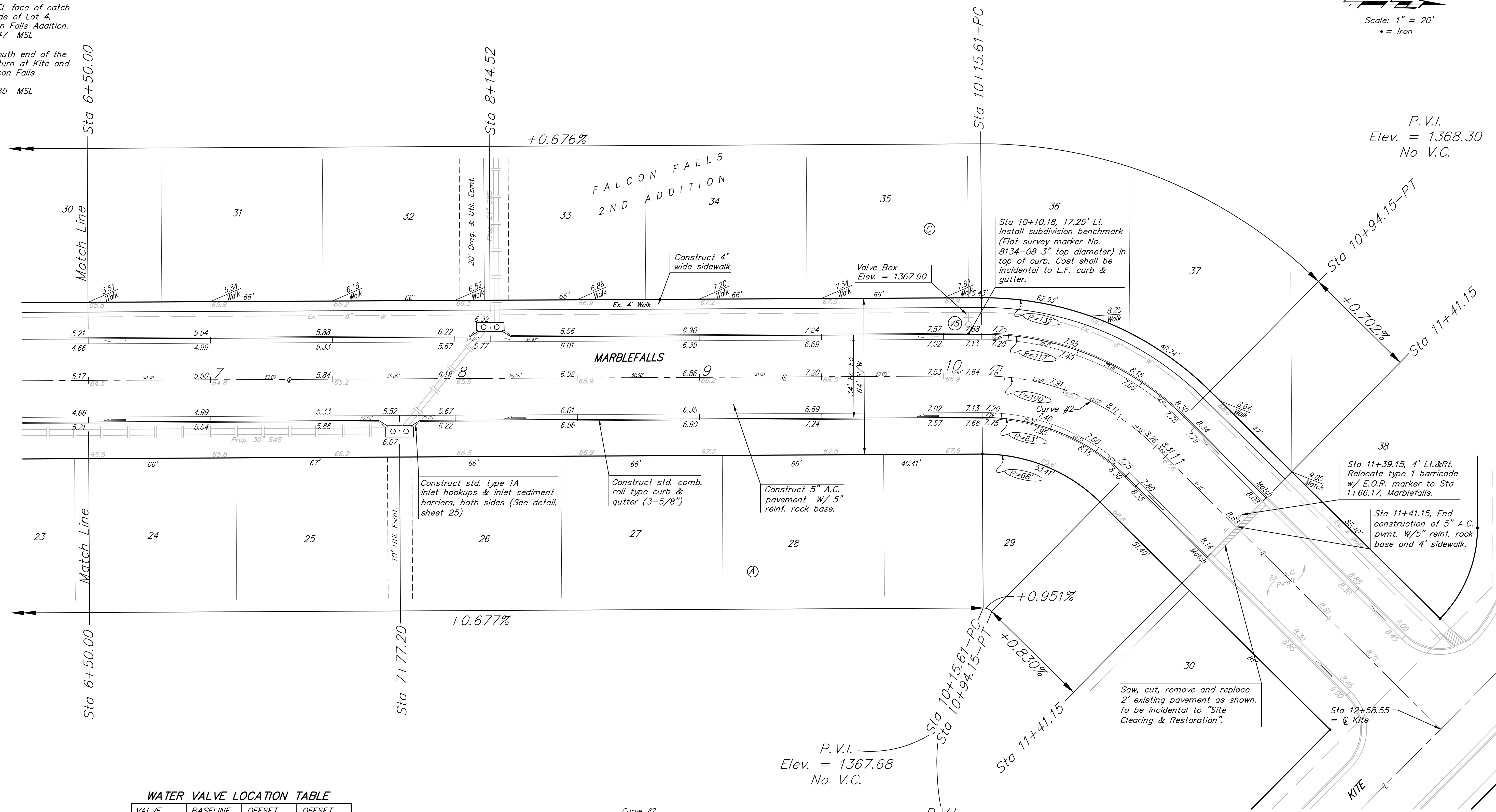


BENCHMARKS:
 BM #1: "□" CL face of catch basin, west side of Lot 4, Block 5, Falcon Falls Addition. Elev. = 1352.47 MSL

BM #2: "□" south end of the south curb return at Kite and Peregrine, Falcon Falls Addition. Elev. = 1359.85 MSL

Scale: 1" = 20'
 • = Iron



P.V.I.
 Elev. = 1368.30
 No V.C.

P.V.I.
 Elev. = 1367.68
 No V.C.

P.V.I.
 Elev. = 1368.30
 No V.C.

WATER VALVE LOCATION TABLE

VALVE NUMBER	BASELINE STATION	OFFSET DISTANCE	OFFSET DIRECTION
V5	10+10.18	24'	Lt.

Paving contractor will be responsible to operate all water valves on the project, in the presence of the inspector, to ensure accessibility to the valves, and that all valves are left in the "ON" position when the project is completed.

Curve #2
 Curve Data Based on Centerline
 Rad. = 100' Delta = 45°00'00" Tangent = 41.42'
 Arc = 78.54' L.C. = 76.54' Def./Ft. = 17.18869 Min.

Station	Arc	FACE CHORD LENGTHS		Defl.	T. Defl.
		8' Lt.	8' Rt.		
10+15.61	-	-	-	0°00'00"	0°00'00"
10+25.00	9.39'	11.73'	7.04'	2°41'24"	2°41'24"
10+50.00	25.00'	31.17'	18.70'	7°09'43"	9°51'07"
10+75.00	25.00'	31.17'	18.70'	7°09'43"	17°00'50"
10+94.15	19.15'	23.90'	14.34'	5°29'10"	22°30'00"

NOTE: ROLL TYPE CURB & GUTTER TO BE CONSTRUCTED ON THE PAVEMENT SHOWN ON THIS SHEET. TOP OF CURB ELEVATIONS ARE GIVEN FOR FULL HEIGHT CURB.

	FALCON FALLS 2ND ADD. - PH. II MARBLEFALLS STA 6+50.00 TO STA 11+41.15	
	<small>Baughman Company, P.A. 315 Ellis St. Wichita, KS 67211 P 316-262-7271 F 316-262-0149 ENGINEERING SURVEYING PLANNING LANDSCAPE ARCHITECTURE</small>	
PROJECT NUMBER 47284265	DESIGN AEG	DRAWN TMS
REVISIONS:	APPROVED DATE 11/07	SCALE Noted SHEET 7 OF 35
<small>FalconFalls2ndPhII/Sr2</small>		<small>06-01-E463</small>