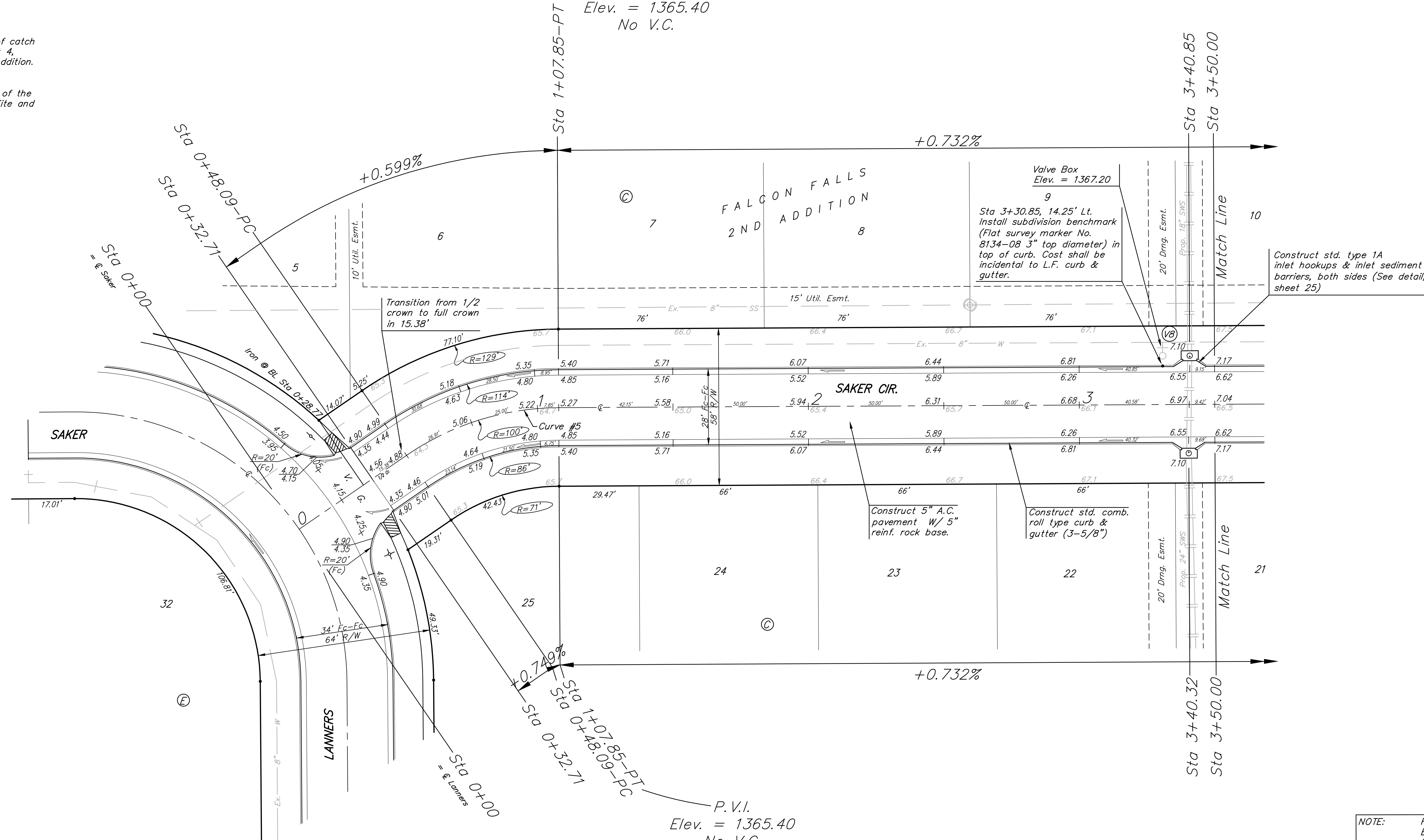


**BENCHMARKS:**  
 BM #1: "□" CL face of catch basin, west side of Lot 4, Block 5, Falcon Falls Addition. Elev. = 1352.47 MSL

BM #2: "□" south end of the south curb return at Kite and Peregrine, Falcon Falls Addition. Elev. = 1359.85 MSL

P.V.I.  
 Elev. = 1365.40  
 No V.C.

Scale: 1" = 20'  
 • = Iron



Construct std. type 1A inlet hookups & inlet sediment barriers, both sides (See detail, sheet 25)

Construct 5" A.C. pavement W/ 5" reinf. rock base.

Construct std. comb. roll type curb & gutter (3-5/8")

NOTE: ROLL TYPE CURB & GUTTER TO BE CONSTRUCTED ON THE PAVEMENT SHOWN ON THIS SHEET. TOP OF CURB ELEVATIONS ARE GIVEN FOR FULL HEIGHT CURB.

**WATER VALVE LOCATION TABLE**

VALVE NUMBER	BASELINE STATION	OFFSET DISTANCE	OFFSET DIRECTION
VB	3+30.85	21'	Lt.

Paving contractor will be responsible to operate all water valves on the project, in the presence of the inspector, to ensure accessibility to the valves, and that all valves are left in the "ON" position when the project is completed.

**Subdivision Bench Marks**

Street & Station	Location Description	Elevation
Marblefalls 3+88.49, 17.25' Lt.	Adjacent to Fire Hydrant at N. End of N. Curb Return of Marblefalls & Lanners.	
Marblefalls 10+10.18, 17.25' Lt.	Adjacent to Fire Hydrant at common lot corner of Lots 35-36, Block C.	
Saker Cir. 3+30.85, 14.25' Lt.	Adjacent to Fire Hydrant at common lot corner of Lots 9-10, Block C.	

**Curve #5**

Curve Data Based on Centerline  
 Rad. = 100' Delta = 34° 14' 33" Tangent = 30.80'  
 Arc = 59.76' L.C. = 58.88' Def/Ft. = 17.19001 Min.

Station	FACE CHORD LENGTHS		Defl.	T. Defl.
	8' Lt.	8' Rt.		
0+48.09	-	-	0°00'00"	0°00'00"
0+50.00	1.91'	2.33'	1.49'	0°32'50"
0+75.00	25.00'	30.42'	19.45'	7°09'45"
1+00.00	25.00'	30.42'	19.45'	7°42'35"
1+07.85	7.85'	9.58'	6.12'	2°14'56"

**Baughman** ENGINEERING | SURVEYING | PLANNING | LANDSCAPE ARCHITECTURE

**SAKER CIR.** STA 0+00 TO STA 3+50.00

PROJECT NUMBER: 47284265

DESIGN: AEG  
 DRAWN: TMS

APPROVED: [Signature]  
 DATE: 11/07

SCALE: Noted  
 SHEET: **9 OF 35**

FalconFalls2ndVPhII/Str4 0601-E463