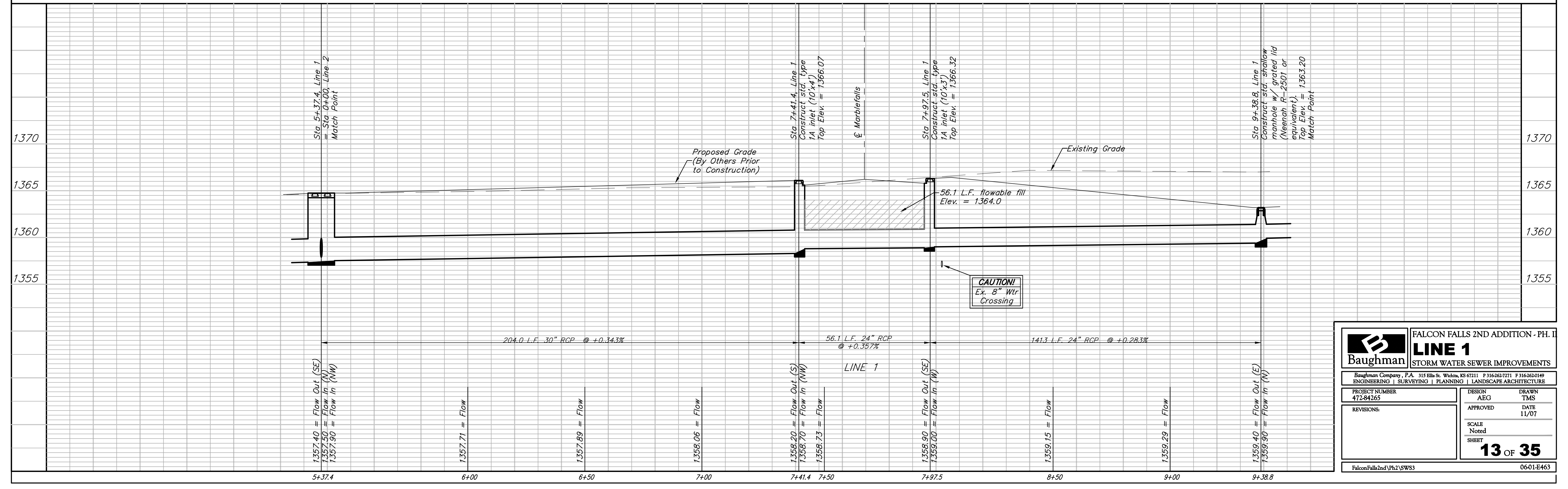
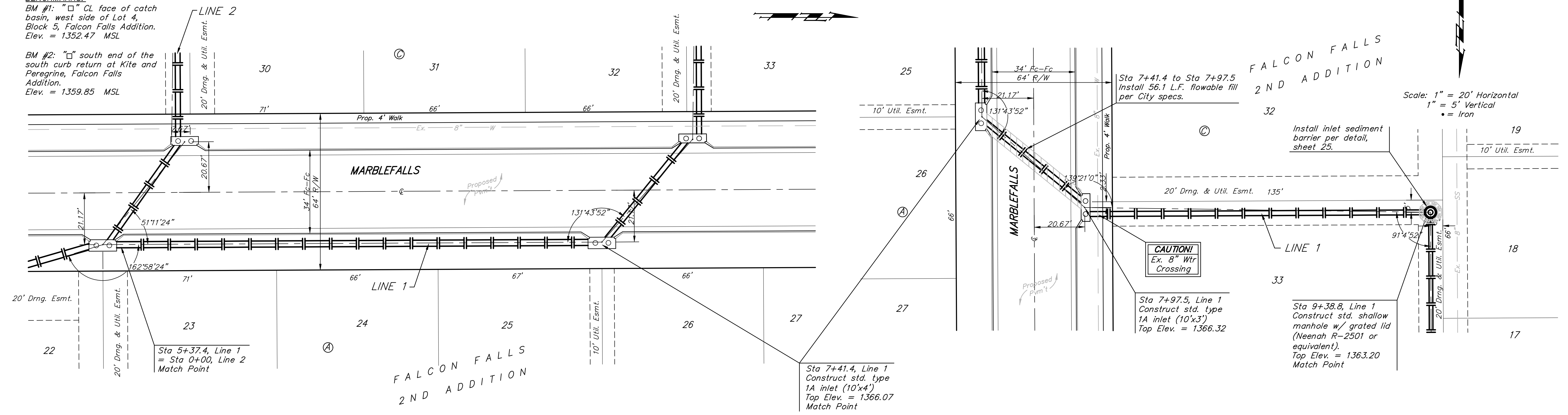


BENCHMARKS:
 BM #1: "□" CL face of catch basin, west side of Lot 4, Block 5, Falcon Falls Addition. Elev. = 1352.47 MSL

BM #2: "□" south end of the south curb return at Kite and Peregrine, Falcon Falls Addition. Elev. = 1359.85 MSL



Baughman		FALCON FALLS 2ND ADDITION - PH. II	
LINE 1		STORM WATER SEWER IMPROVEMENTS	
Baughman Company, P.A. 315 Ellis St. Wichita, KS 67211 P 316-262-7271 F 316-262-0149			
ENGINEERING SURVEYING PLANNING LANDSCAPE ARCHITECTURE			
PROJECT NUMBER 472-84265	DESIGN AEG	DRAWN TMS	APPROVED DATE 11/07
REVISIONS:	SCALE Noted		
			SHEET 13 OF 35
FalconFalls2nd\Ph.2\SW83			0601-E463