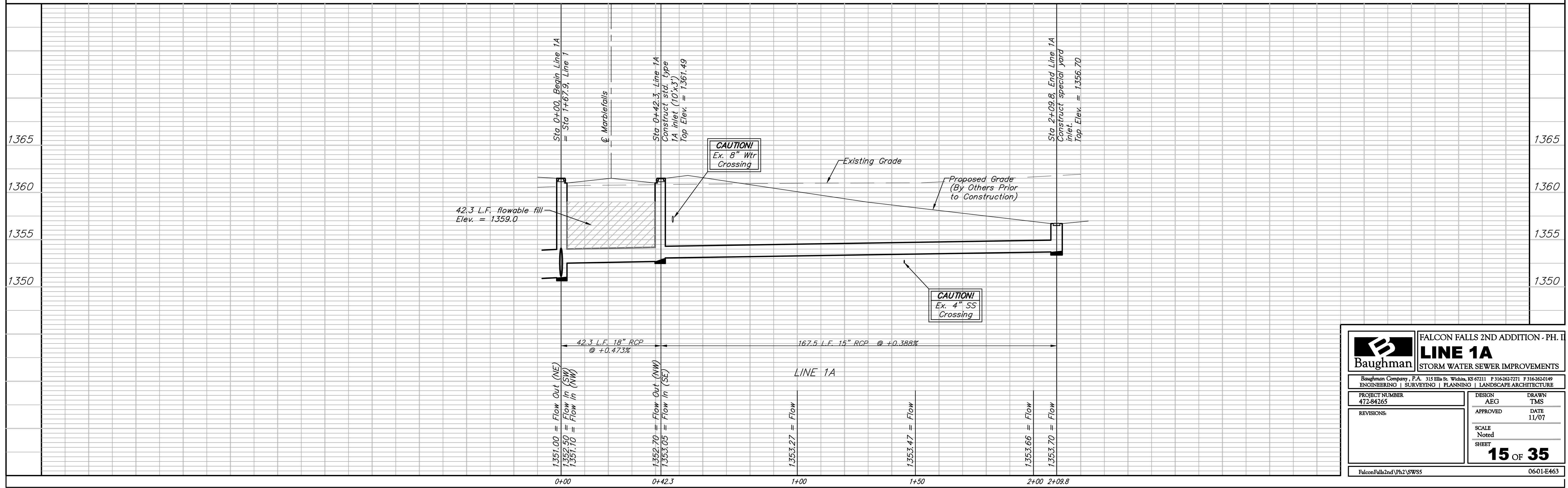
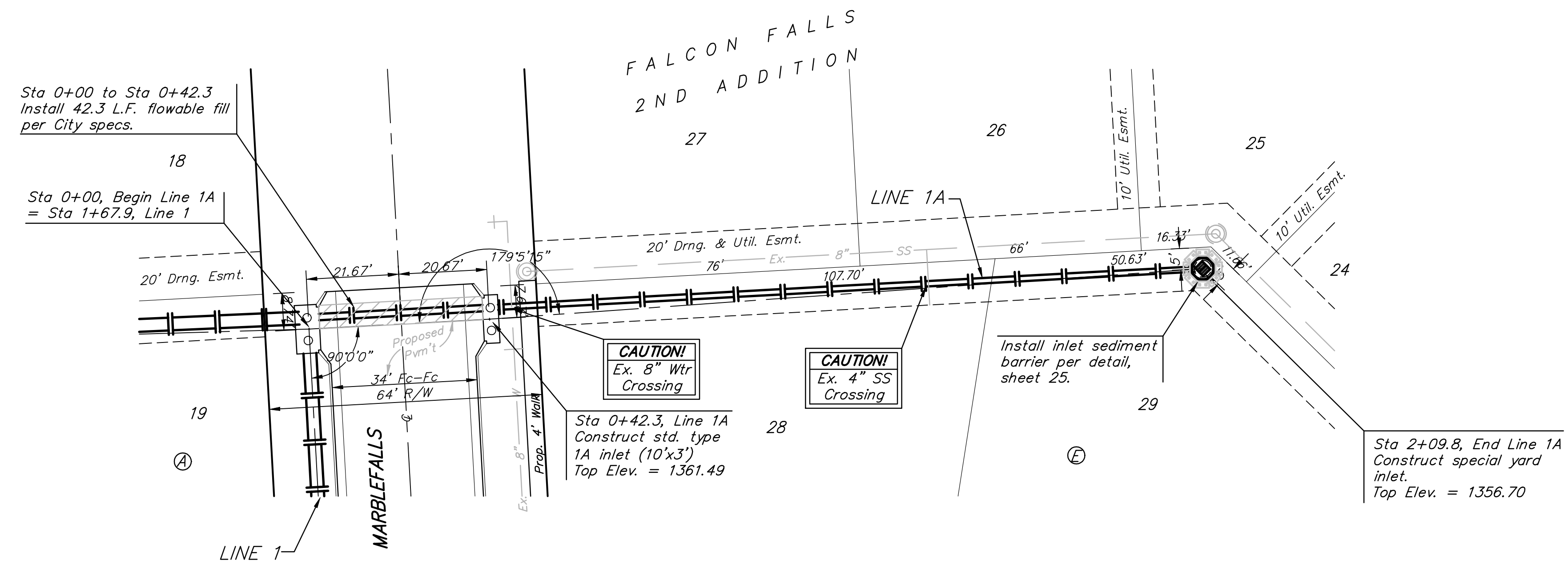
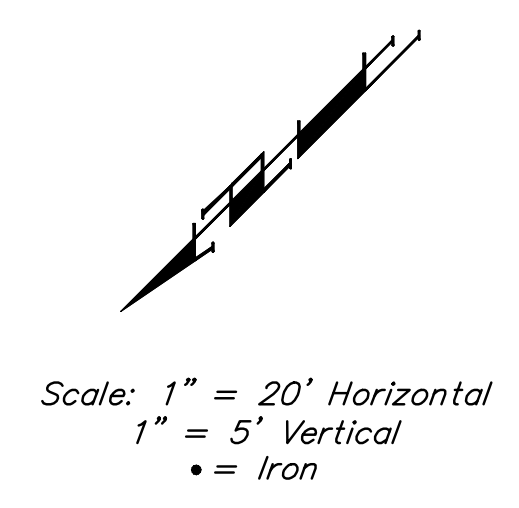


**BENCHMARKS:**  
 BM #1: "□" CL face of catch basin, west side of Lot 4, Block 5, Falcon Falls Addition. Elev. = 1352.47 MSL

BM #2: "□" south end of the south curb return at Kite and Peregrine, Falcon Falls Addition. Elev. = 1359.85 MSL



		<b>FALCON FALLS 2ND ADDITION - PH. II</b> <b>LINE 1A</b> <b>STORM WATER SEWER IMPROVEMENTS</b>	
		<small>Baughman Company, P.A. 315 Ellis St. Wichita, KS 67211 P 316-262-7271 F 316-262-0149          ENGINEERING   SURVEYING   PLANNING   LANDSCAPE ARCHITECTURE</small>	
PROJECT NUMBER 472-84265	DESIGN AEG	DRAWN TMS	APPROVED DATE 11/07
REVISIONS:	SCALE Noted	SHEET <b>15 OF 35</b>	
<small>FalconFalls2nd\Ph2\SW55</small>			<small>0601-E463</small>