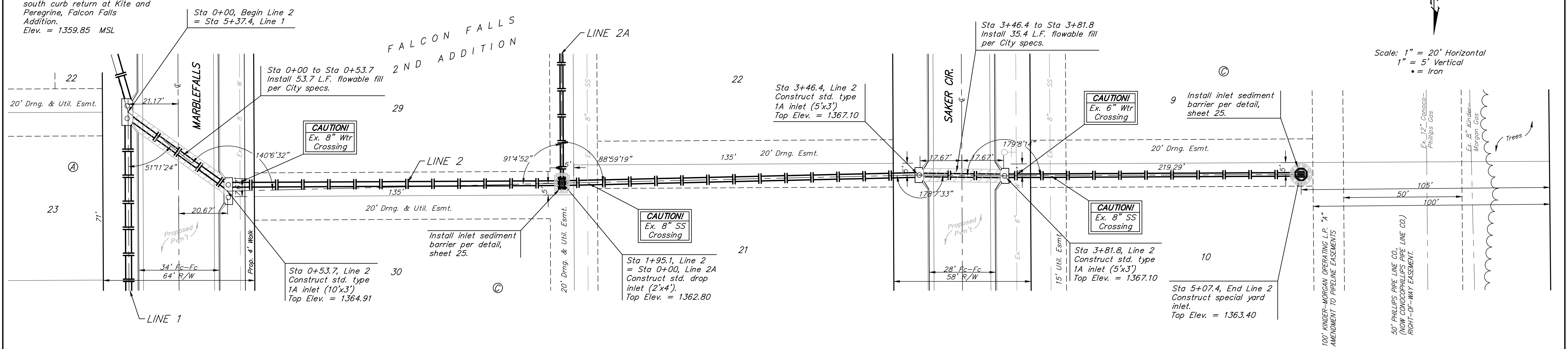
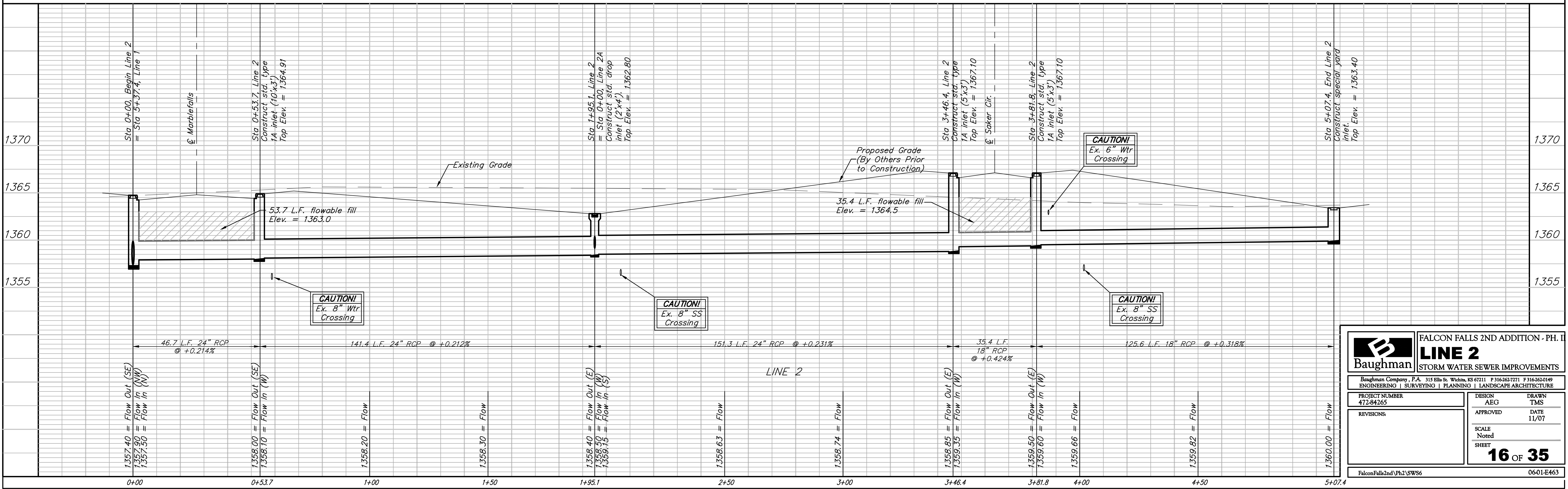


BENCHMARKS:
 BM #1: "□" CL face of catch basin, west side of Lot 4, Block 5, Falcon Falls Addition. Elev. = 1352.47 MSL
 BM #2: "□" south end of the south curb return at Kite and Peregrine, Falcon Falls Addition. Elev. = 1359.85 MSL



Scale: 1" = 20' Horizontal
 1" = 5' Vertical
 • = Iron



		FALCON FALLS 2ND ADDITION - PH. II LINE 2 STORM WATER SEWER IMPROVEMENTS	
		<small>Baughman Company, P.A. 315 Ellis St. Wichita, KS 67211 P 316-262-7271 F 316-262-0149 ENGINEERING SURVEYING PLANNING LANDSCAPE ARCHITECTURE</small>	
PROJECT NUMBER 472-84265	DESIGN AEG	DRAWN TMS	DATE 11/07
REVISIONS:	APPROVED	SCALE Noted	SHEET 16 OF 35
<small>FalconFalls2nd.Ph2.SWS6</small>		<small>0601-E463</small>	