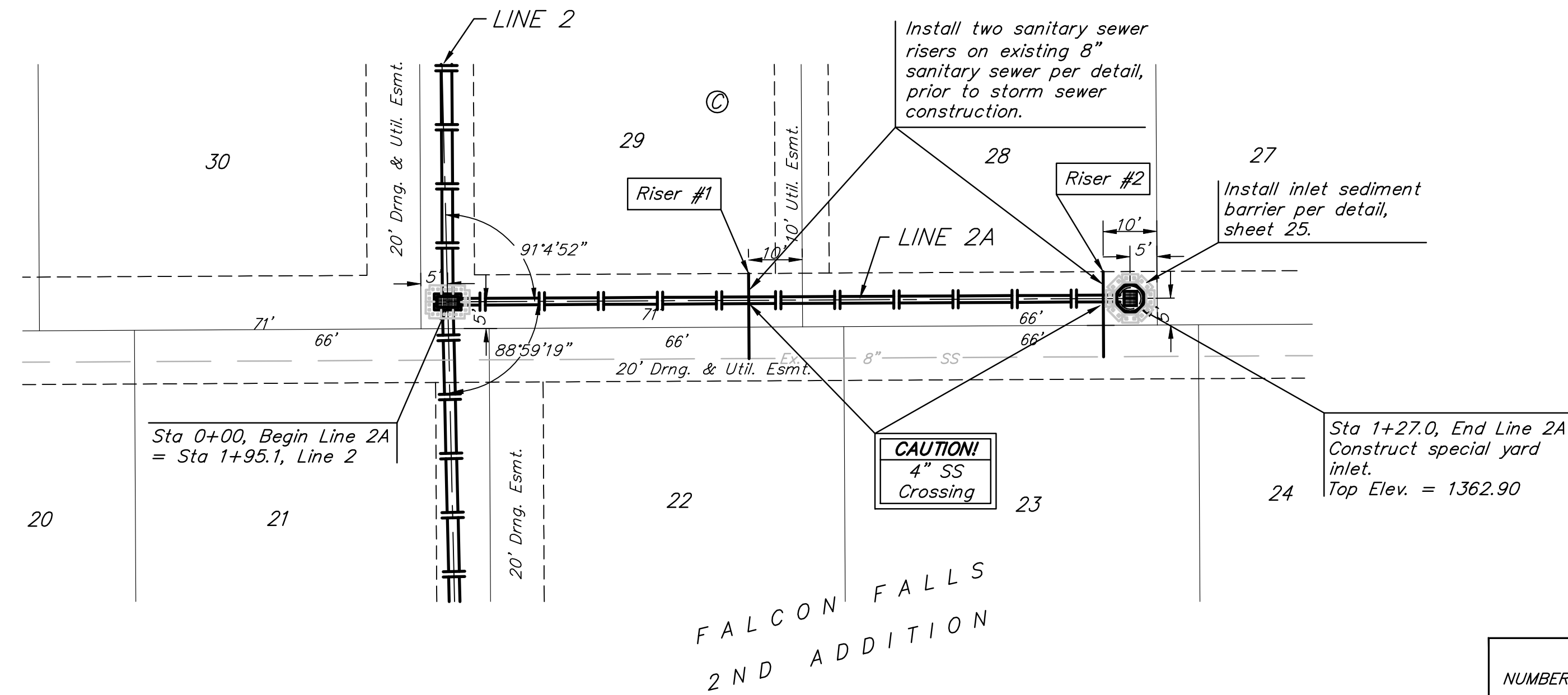


**BENCHMARKS:**  
 BM #1: "□" CL face of catch basin, west side of Lot 4, Block 5, Falcon Falls Addition. Elev. = 1352.47 MSL

BM #2: "□" south end of the south curb return at Kite and Peregrine, Falcon Falls Addition. Elev. = 1359.85 MSL

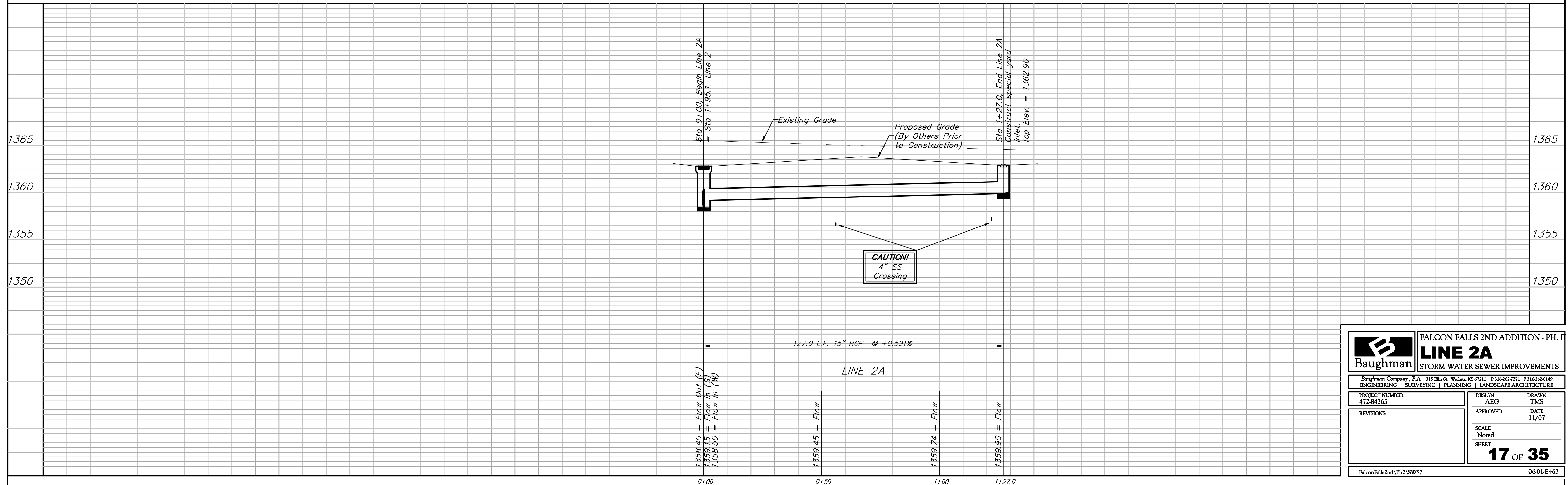
Scale: 1" = 20' Horizontal  
 1" = 5' Vertical  
 • = Iron



**SEWER SERVICE TABLE**

NUMBER	TYPE	LOCATION				FOR INFORMATION ONLY	
		LOT NO.	BLOCK NO.	LINE NO.	STATION DIRECTION	APPROXIMATE LENGTH 4" PIPE VERTICAL	HORIZONTAL
1	8" X 4" Tee	29	C	-	-	3.0'	16'
2	8" X 4" Tee	28	C	-	-	4.0'	16'

NOTE: Vertical Riser Pipe shall be extended to 2' minimum above ground water elevation and 4' maximum below proposed ground elevation.



**Baughman** ENGINEERING | SURVEYING | PLANNING | LANDSCAPE ARCHITECTURE

**FALCON FALLS 2ND ADDITION - PH. II**  
**LINE 2A**  
 STORM WATER SEWER IMPROVEMENTS

PROJECT NUMBER: 472-84265  
 DESIGN: AEG  
 DRAWN: TMS  
 APPROVED: [Signature]  
 DATE: 11/07  
 SCALE: Noted  
 SHEET: 17 OF 35

FalconFalls2nd\Ph2\SW7 0601-E463