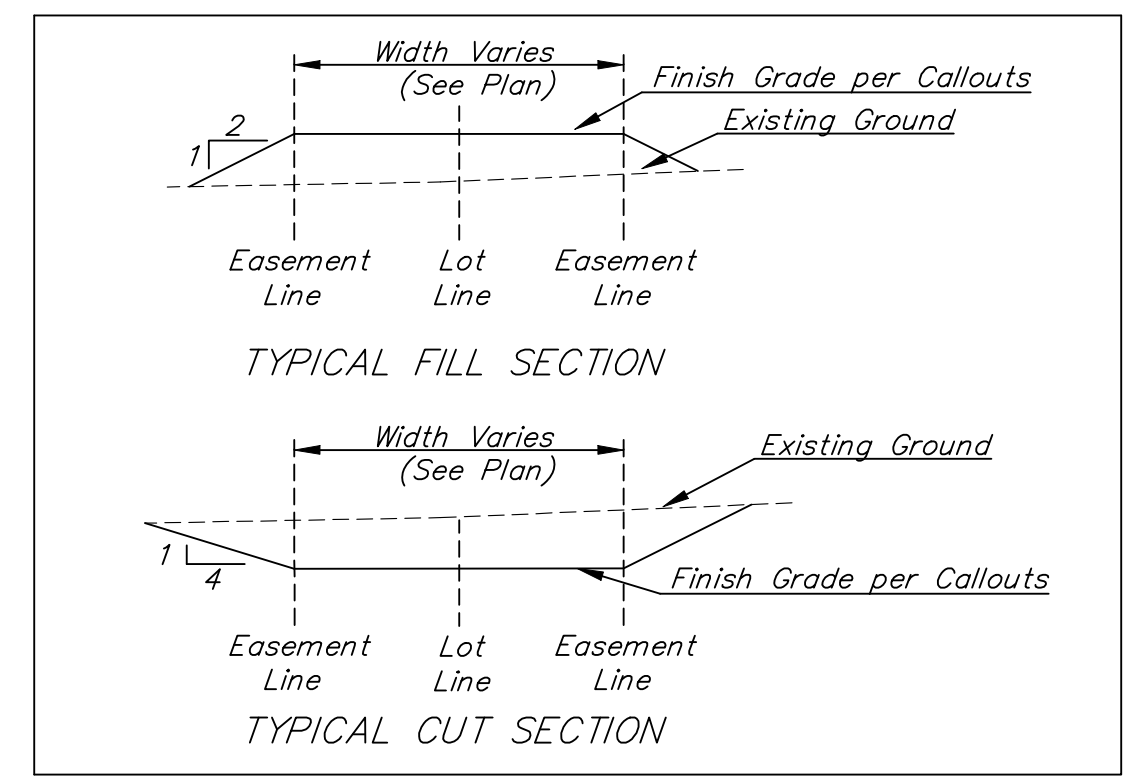




Scale: 1" = 60'

Area to be graded Proposed Grades

The contractor shall fill and grade the easements as shown on the elevations given on the easement grading plan. All costs for grading shall be incidental to the Easement Grading Bid Item. The contractor shall 'straight' grade the easements between the elevations given. Where a callout designates 'Match', the contractor will grade to the existing ground elevation. The existing ditch cross sections are shown below.



EROSION CONTROL PLAN LEGEND
(Installation Details Found in the SWP2 Plan)

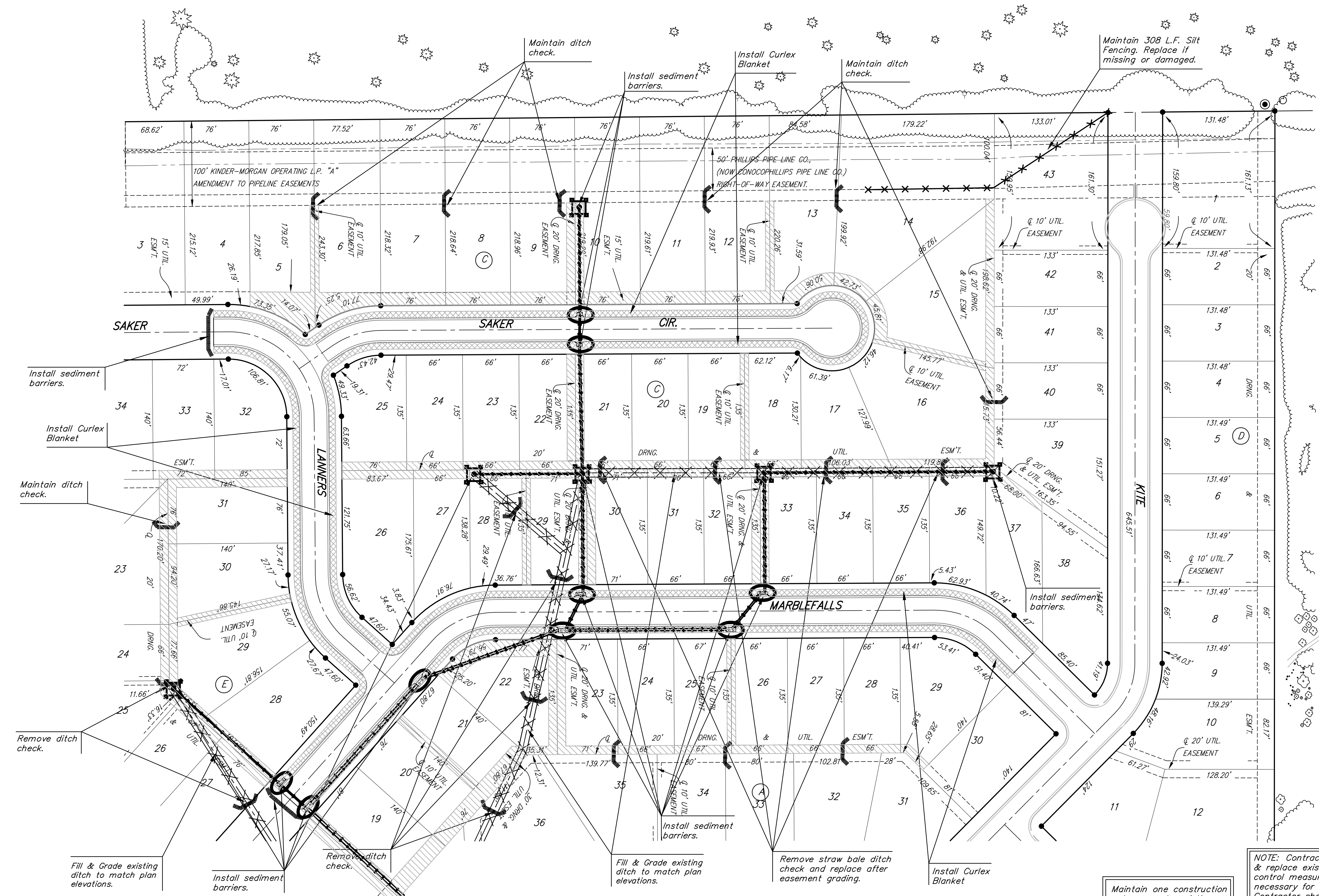
- HEAVY STONE RIP-RAP
- DROP INLET PROTECTION
- CURB INLET PROTECTION
- STRAW BALE BARRIERS
- SILT FENCING
- EARTH DIKES
- CURLEX BLANKET

NO SCALE

All easements have been graded prior to construction with the mass grading plan, however, all easements shall be fine graded with this project after street & sws construction has been completed. All cost associated with the fine grading shall be included in the lump sum bid item "Easement Grading".

NOTE: Contractor shall remove & replace existing erosion control measures as necessary for construction. Contractor shall be required to maintain all on-site erosion control items until final acceptance by the City of Wichita.

Maintain one construction entrance onto existing paved roadway per detail, sheet 28.



Baughman FALCON FALLS 2ND ADD. - PH. II
EROSION CONTROL/ESMT. GRADING PLAN

Baughman Company, P.A. 315 Ellis St. Wichita, KS 67211 P 316-262-7271 F 316-262-0149
ENGINEERING | SURVEYING | PLANNING | LANDSCAPE ARCHITECTURE

PROJECT NUMBER 41284265	DESIGN TMS	DRAWN TMS
REVISIONS:	APPROVED	DATE 11/07
	SCALE Noted	
	SHEET	24 OF 34

FalconFalls2ndPh2StrECplan 0601-E463