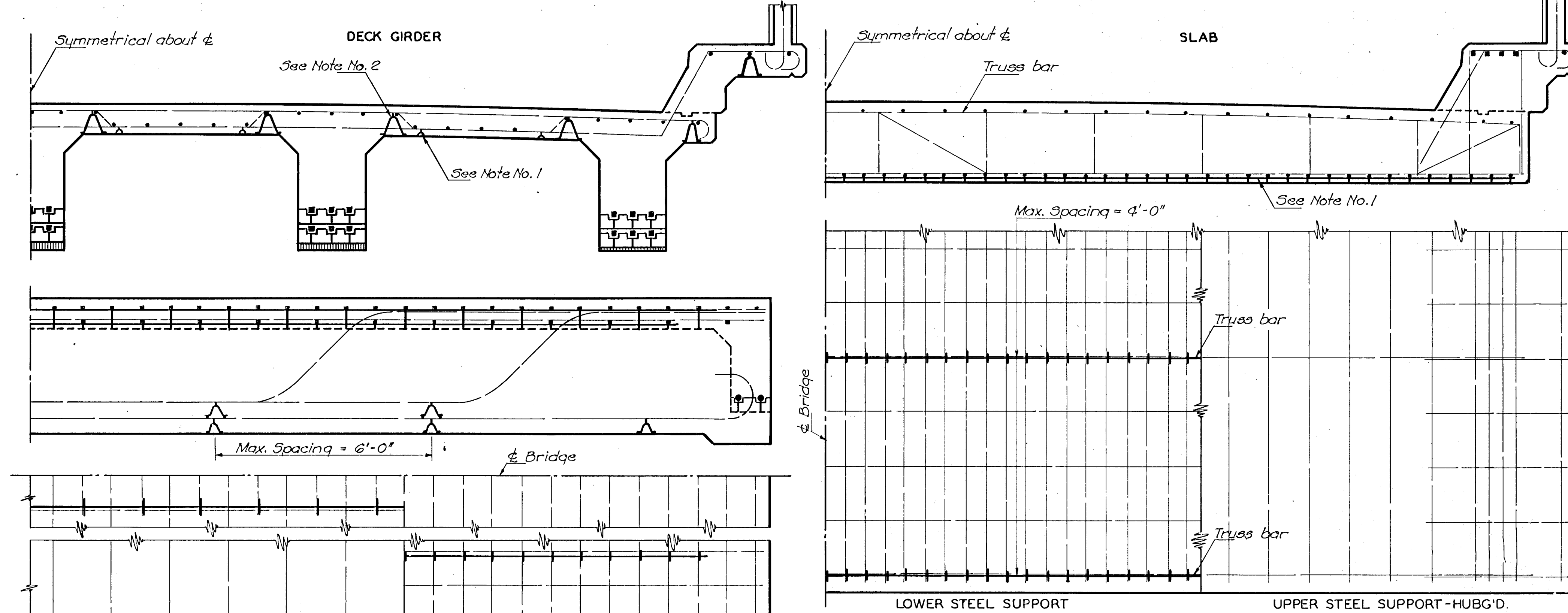
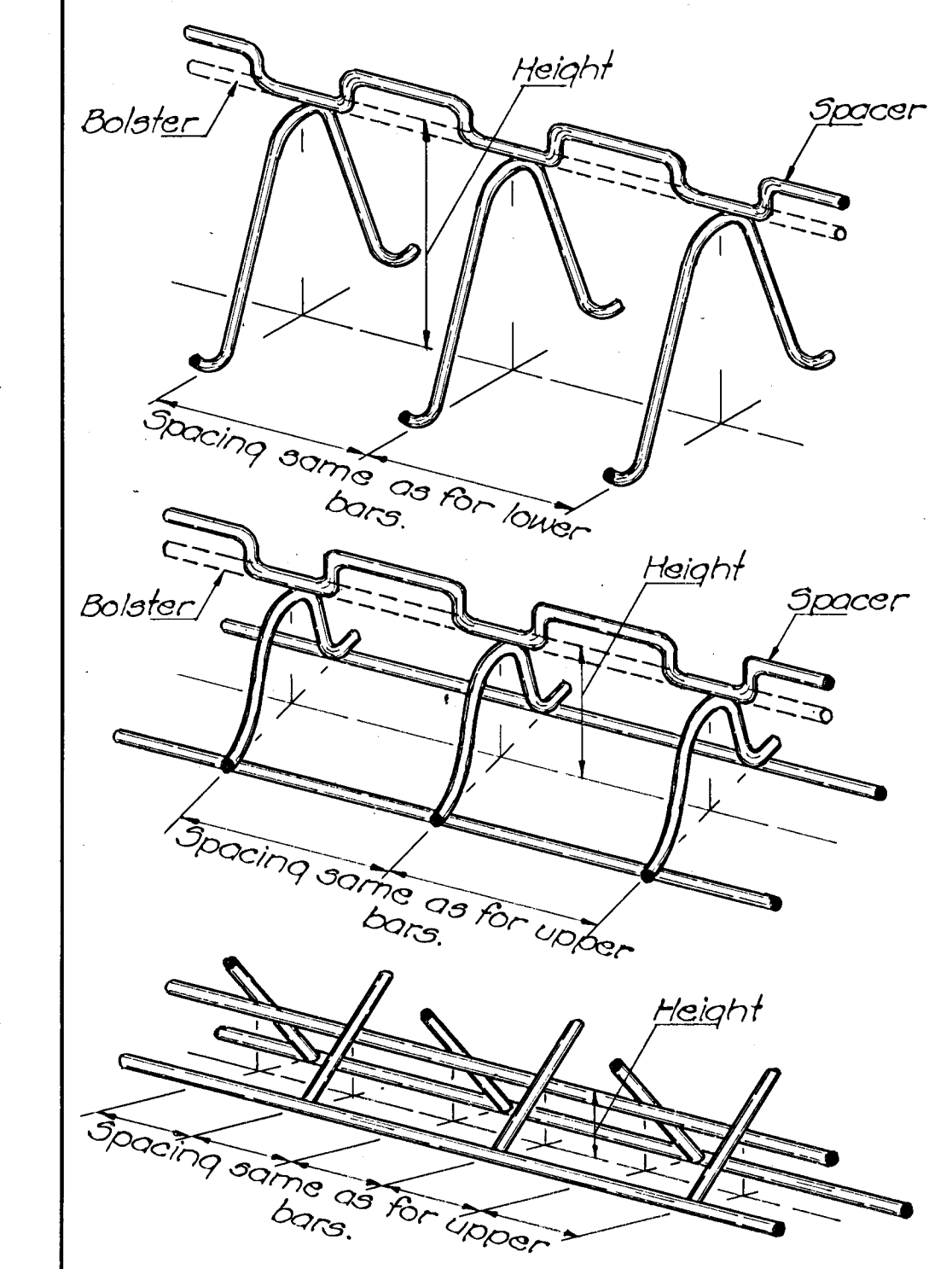


FHWA REGION NO.	STATE	PROJECT NO.	YEAR	SHEET NO.	TOTAL SHEETS
7	KANSAS	54-87-5942 (2)	1980	32	32

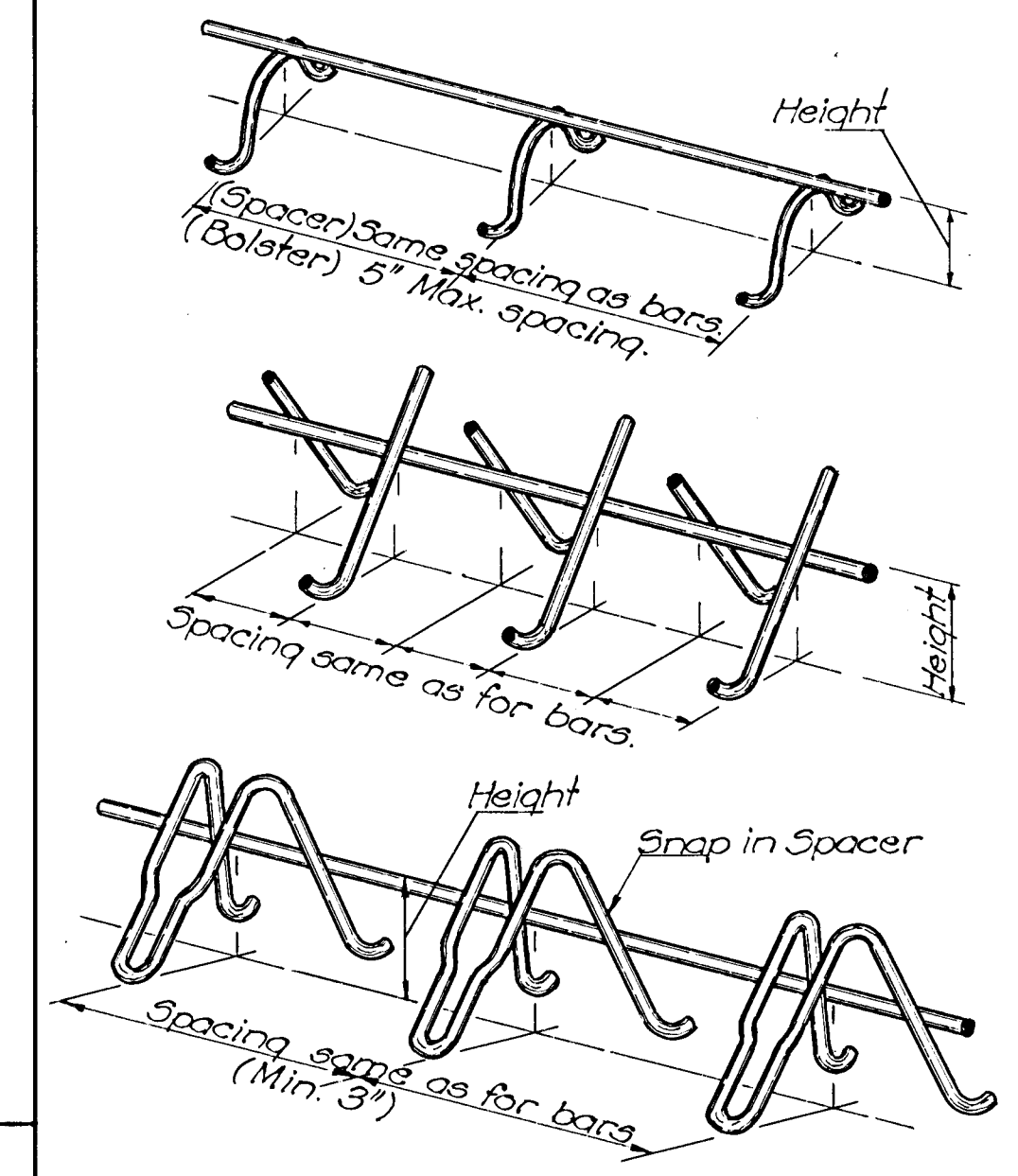
TYPICAL SUPERSTRUCTURE DETAILS



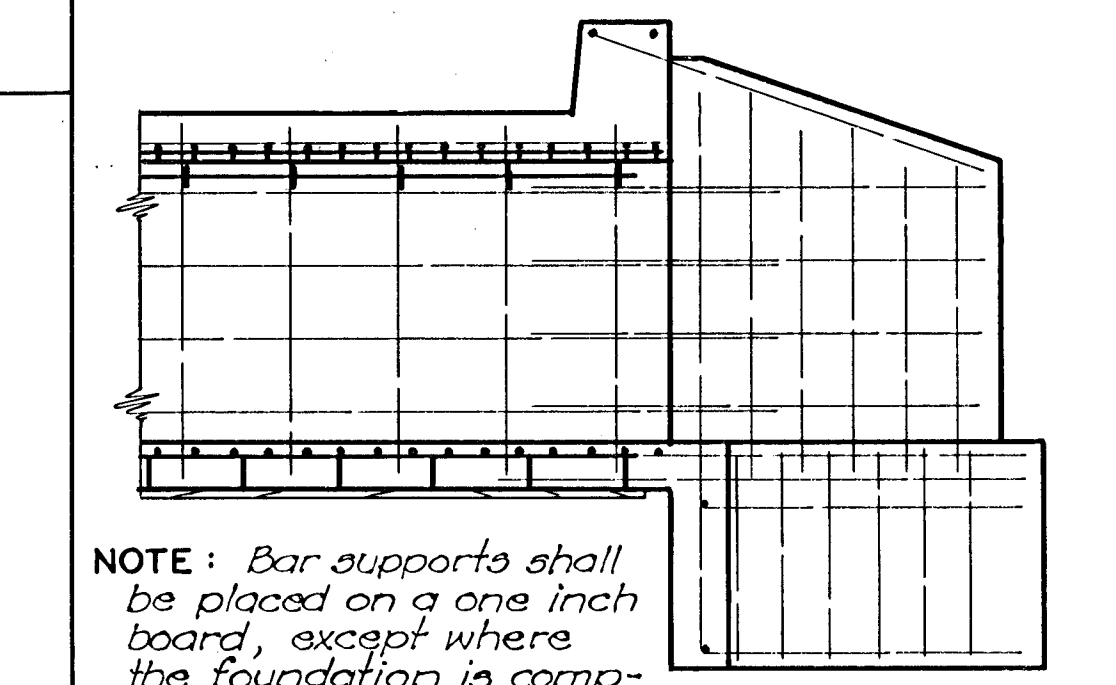
BEAM BAR SPACERS & BOLSTERS



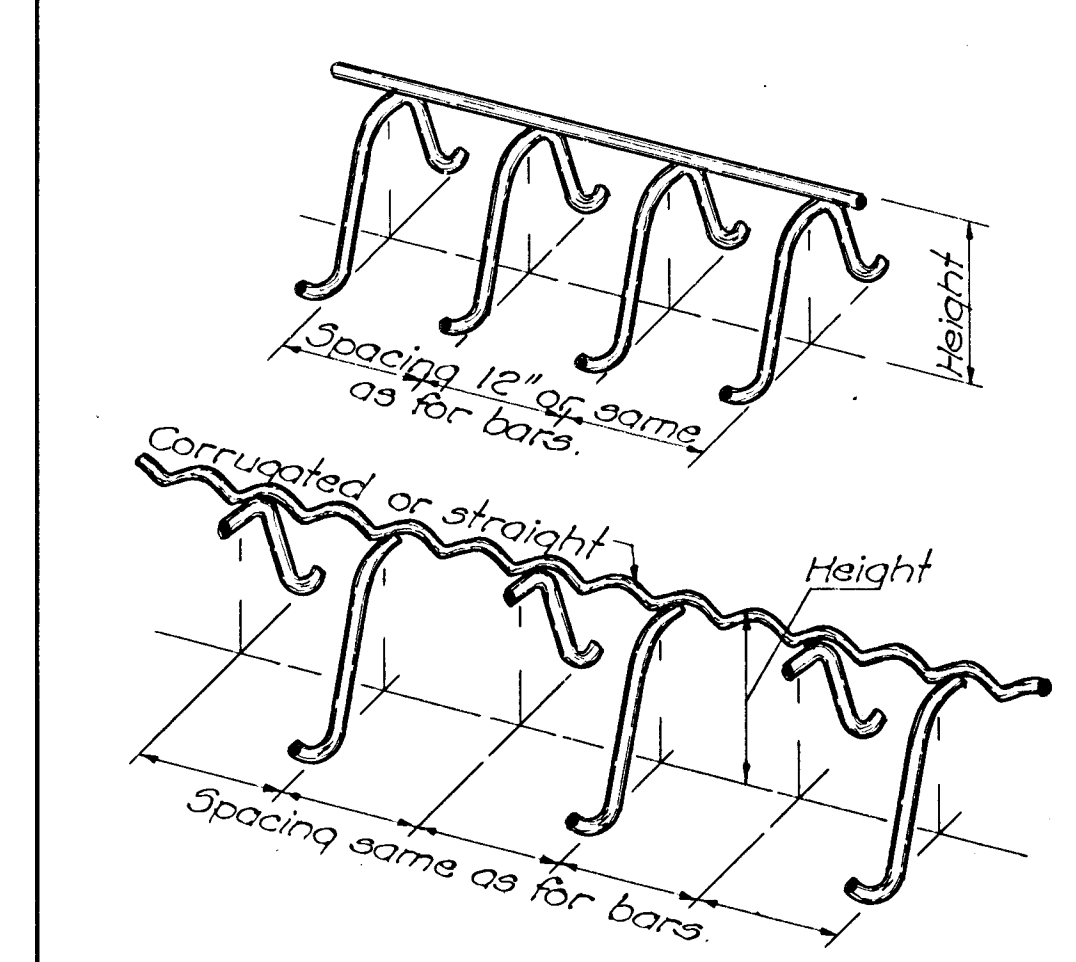
LOW SLAB BAR SPACERS & BOLSTERS



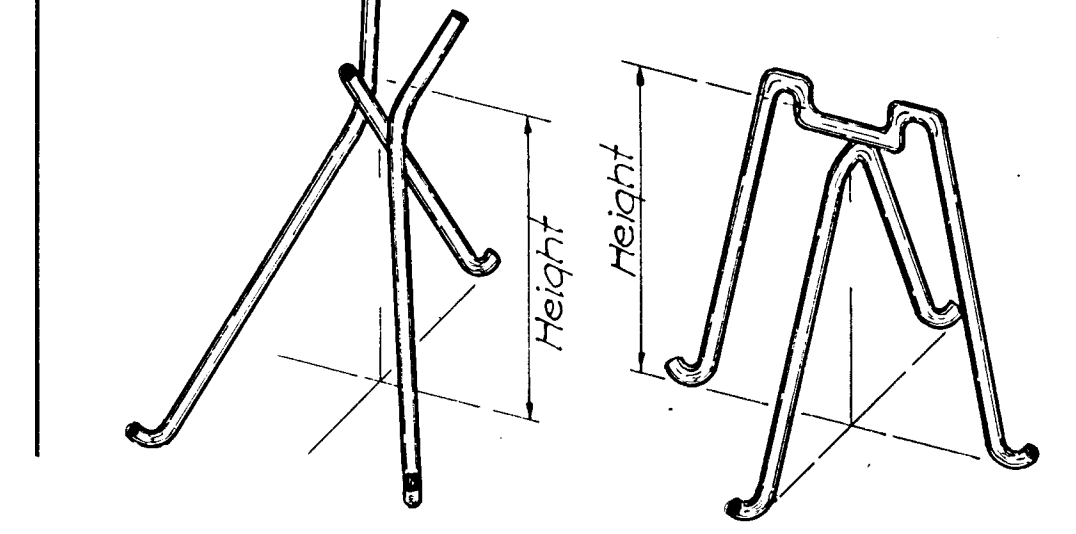
TYPICAL CULVERT DETAILS



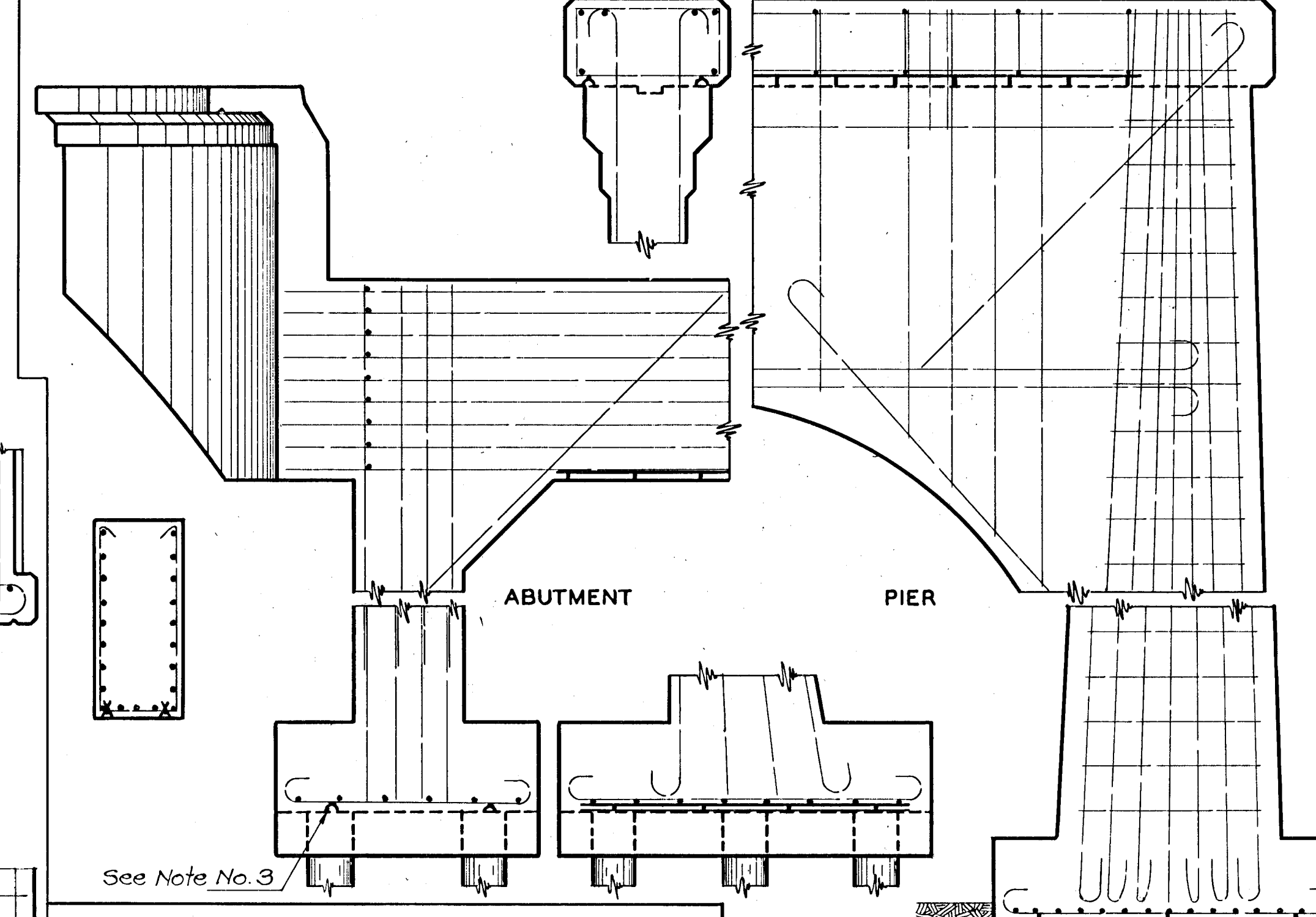
HIGH SLAB BAR SPACERS & BOLSTERS



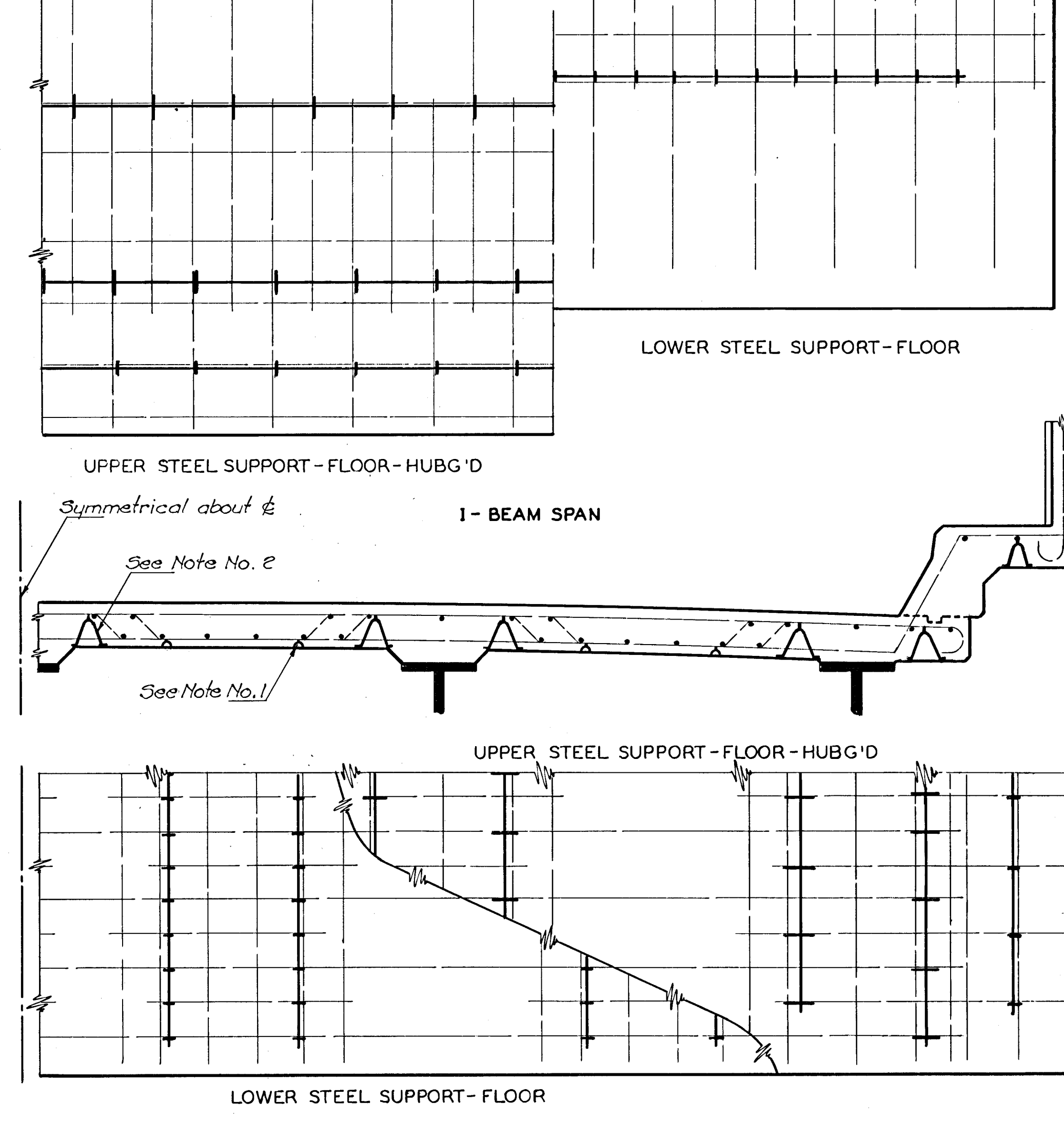
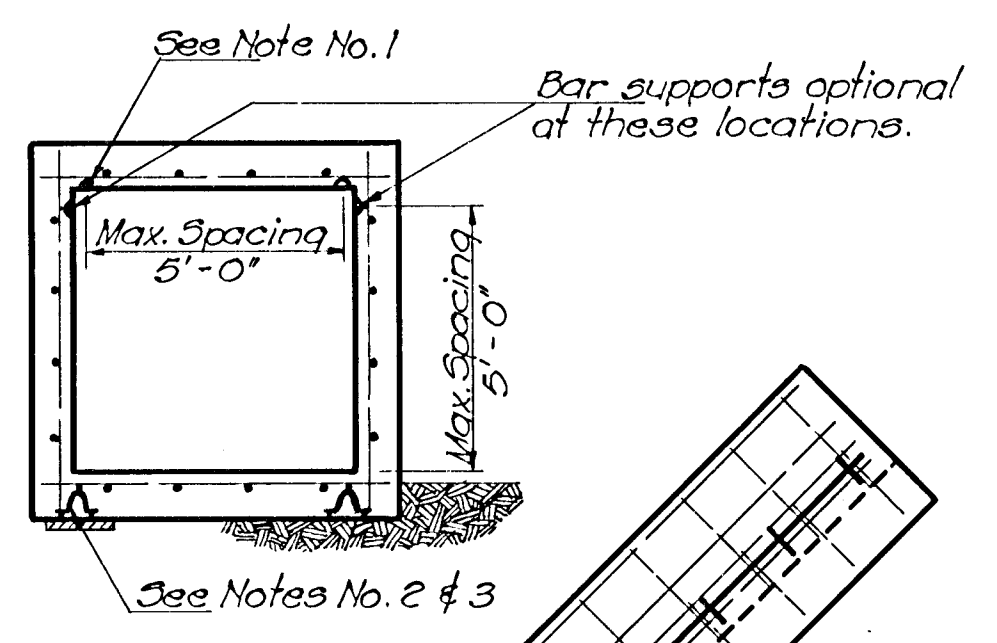
INDIVIDUAL HIGH BAR CHAIRS



TYPICAL SUBSTRUCTURE DETAILS

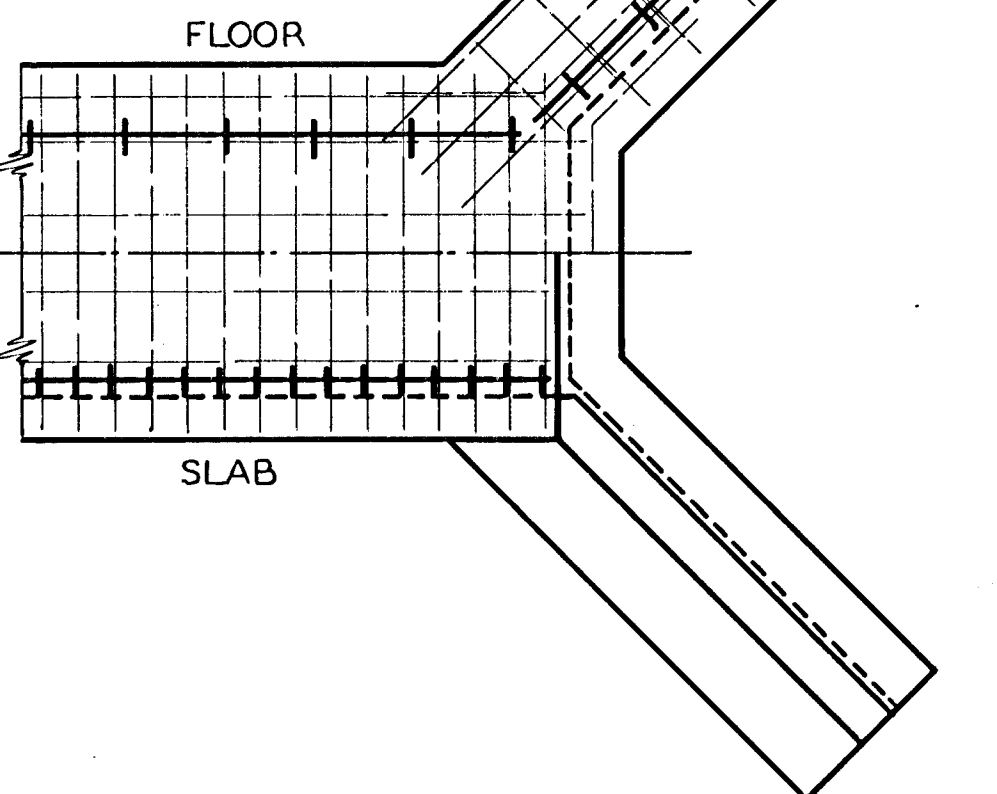


NOTE: Bar supports shall be placed on a one inch board, except where the foundation is composed of rock, firm shale or a seal course. See Note No. 3.



**GENERAL NOTE**  
 Spacings shown are maximum. Sufficient supports shall be used, as determined by the Engineer, to retain the reinf. steel in position. Approved designs and arrangements of Supports or Spacers other than as shown on this sheet, may be used with the permission of the Engineer. Component parts of Supports and Spacers shall be securely welded at all contact points. Legs shall be so constructed that only the ends bear upon the forms.  
 Wire used for Supports and Spacers shall be of sufficient size to insure stability of Reinforcing Steel at the position shown on the Plans, within the limits indicated by Notes 1 & 2. Wire supports shall be supplemented with form ties or other approved devices where necessary.

**NOTE 1:** The lower side of Reinforcing Steel in these locations shall be not less than one inch (1") from the surface of the concrete.  
**NOTE 2:** The upper side of Reinforcing Steel in these locations shall be within the limits shown on the Plans.  
**NOTE 3:** The use of Wire Supports for Reinforcing Steel in these locations is optional. Where they are not used the Steel shall be supported from the forms by means of wire ties or saddles.



NO.	DATE	REVISIONS	BY	APP'D
KANSAS DEPARTMENT OF TRANSPORTATION				
<b>SUPPORTS AND SPACERS FOR REINFORCING STEEL</b>				
STD. NO. 610 SCALE No. Scale				
DESIGNED BY E.A. DATE 7-23 DETAILED BY J.W. & D. TRACED BY M.A. & P.				
CHECKED BY S.C. APPROVED BY L.H. UNWELL DATE 4-11-44				