

WL Sta 0+30.00, End Line 1B
 = BL Sta 10+40.62, 87.50' Lt.
 1 - 2" Blowoff Assy.
 Valve Box Elev. = 1264.20

WL Sta 0+15.00, Line 1B
 = BL Sta 10+40.62, 72.5' Lt.
 1 - 8" CIMJ 22.5" Bend (V)

WL Sta 10+16.17, Line 1
 = WL Sta 0+00, Line 1B
 = BL Sta 10+40.62, 57.5' Lt.
 Match Point

110.60 L.F. 8" Pipe
 WL Sta 11+26.77, Line 1
 = BL Sta 11+51.22, 57.5' Lt.
 1 - 12" CIMJ 45" Bend

33.23 L.F. 12" Pipe
 WL Sta 11+60.00, Line 1
 = BL Sta 11+74.72, 34' Lt.
 1 - 12" CIMJ 45" Bend

BM #1 - City of Wichita
 Benchmark Disc, SE Corner of
 Clifton and 55th Street South,
 Southwest corner of RCB, on
 top of hubguard at the West end.
 ELEV. = 1263.29 NGVD29

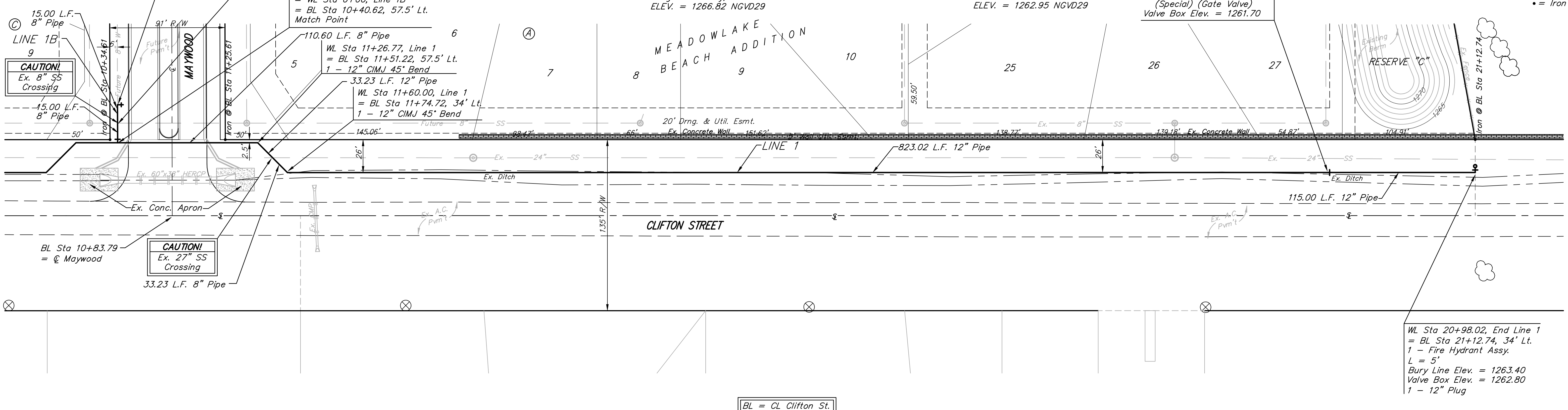
BM #2 - "□" Cut on wall footing
 located 29' North of the South
 end of wall, at the Southeast
 corner of Lot 7 Block A,
 Meadowlake Beach Addition,
 Sedgwick County, Kansas.
 ELEV. = 1266.82 NGVD29

BM #3 - "□" Cut Top of Curb,
 West side South end of Concrete
 street North west of Northeast
 corner of Meadowlake Beach
 Addition, Sedgwick County,
 Kansas.
 ELEV. = 1262.86 NGVD29

BM #4 - "□" Cut Top of Curb,
 East return on East side of
 Concrete street North of the
 Northwest Corner of Meadowlake
 Beach Addition, Sedgwick County,
 Kansas.
 ELEV. = 1262.95 NGVD29

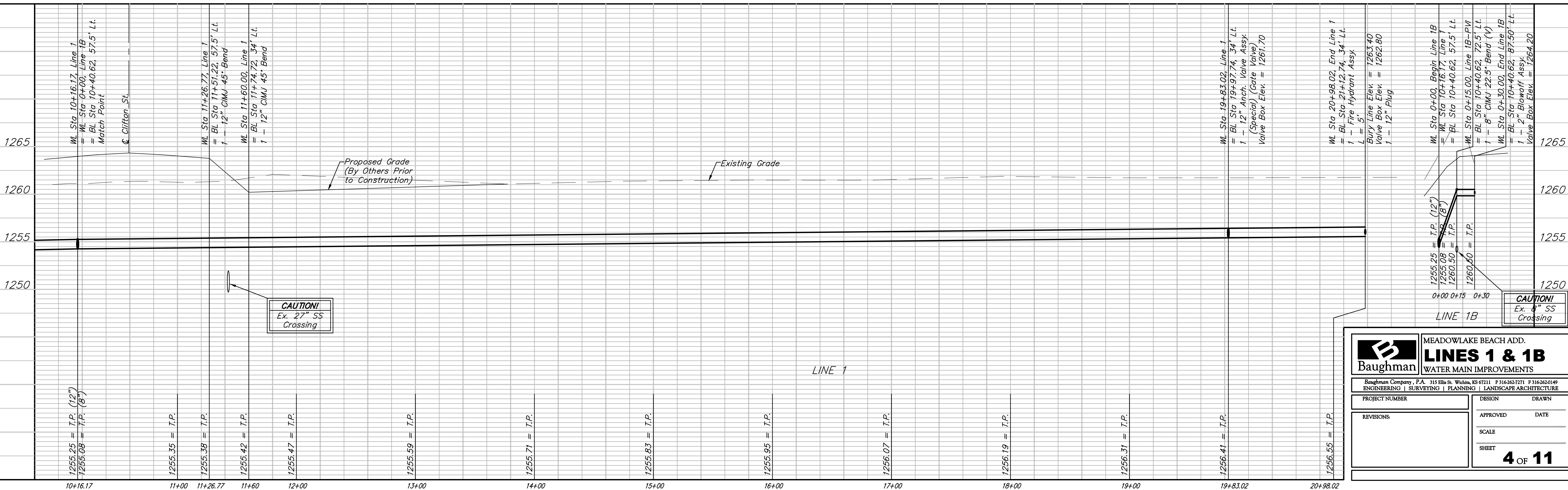
WL Sta 19+83.02, Line 1
 = BL Sta 19+97.74, 34' Lt.
 1 - 12" Anch. Valve Assy.
 (Special) (Gate Valve)
 Valve Box Elev. = 1261.70

Scale: 1" = 40' Horizontal
 1" = 5' Vertical
 • = Iron



BL = CL Clifton St.

WL Sta 20+98.02, End Line 1
 = BL Sta 21+12.74, 34' Lt.
 1 - Fire Hydrant Assy.
 L = 5'
 Bury Line Elev. = 1263.40
 Valve Box Elev. = 1262.80
 1 - 12" Plug



B MEADOWLAKE BEACH ADD.
Baughman **LINES 1 & 1B**
 WATER MAIN IMPROVEMENTS

Baughman Company, P.A. 315 Ellis St. Wichita, KS 67211 P 316-262-7271 F 316-262-0149
 ENGINEERING | SURVEYING | PLANNING | LANDSCAPE ARCHITECTURE

PROJECT NUMBER	DESIGN	DRAWN
REVISIONS:	APPROVED	DATE
	SCALE	
	SHEET	4 OF 11