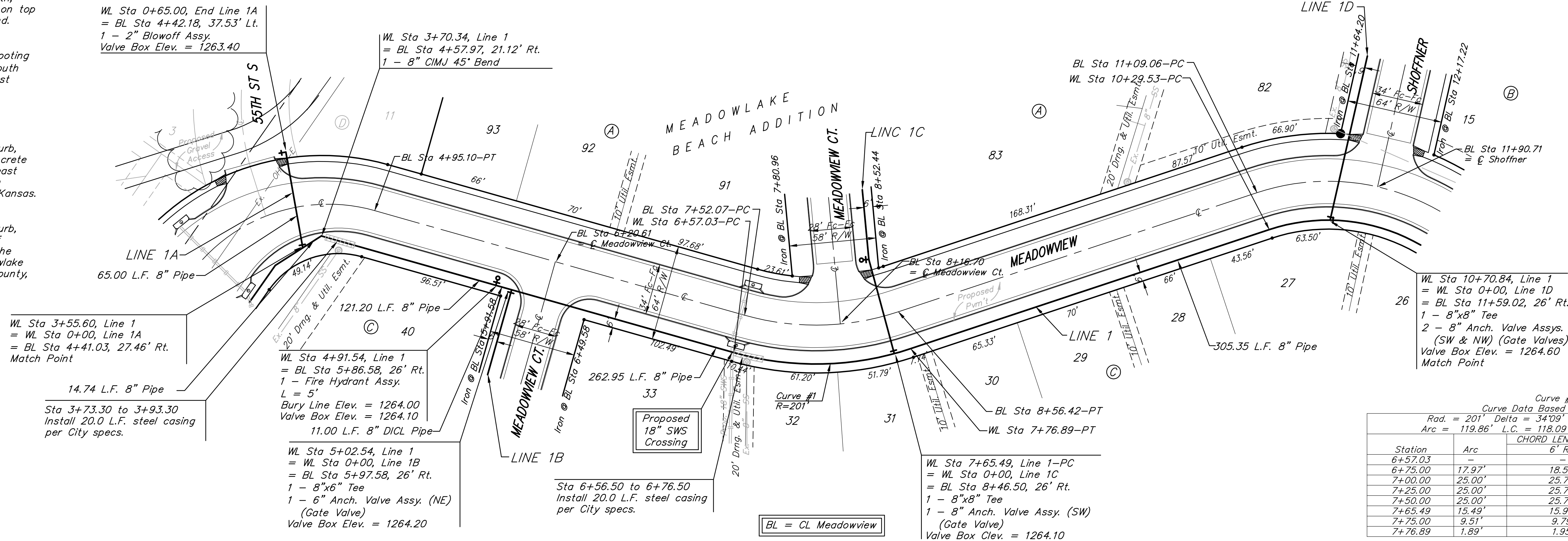


BM #1 - City of Wichita
Benchmark Disc, SE Corner of
Clifton and 55th Street South,
Southwest corner of RCB, on top
of hubguard at the West end.
ELEV. = 1263.29 NGVD29

BM #2 - "□" Cut on wall footing
located 29' North of the South
end of wall, at the Southeast
corner of Lot 7 Block A,
Meadowlake Beach Addition,
Sedgwick County, Kansas.
ELEV. = 1266.82 NGVD29

BM #3 - "□" Cut Top of Curb,
West side South end of Concrete
street North west of Northeast
corner of Meadowlake Beach
Addition, Sedgwick County, Kansas.
ELEV. = 1262.86 NGVD29

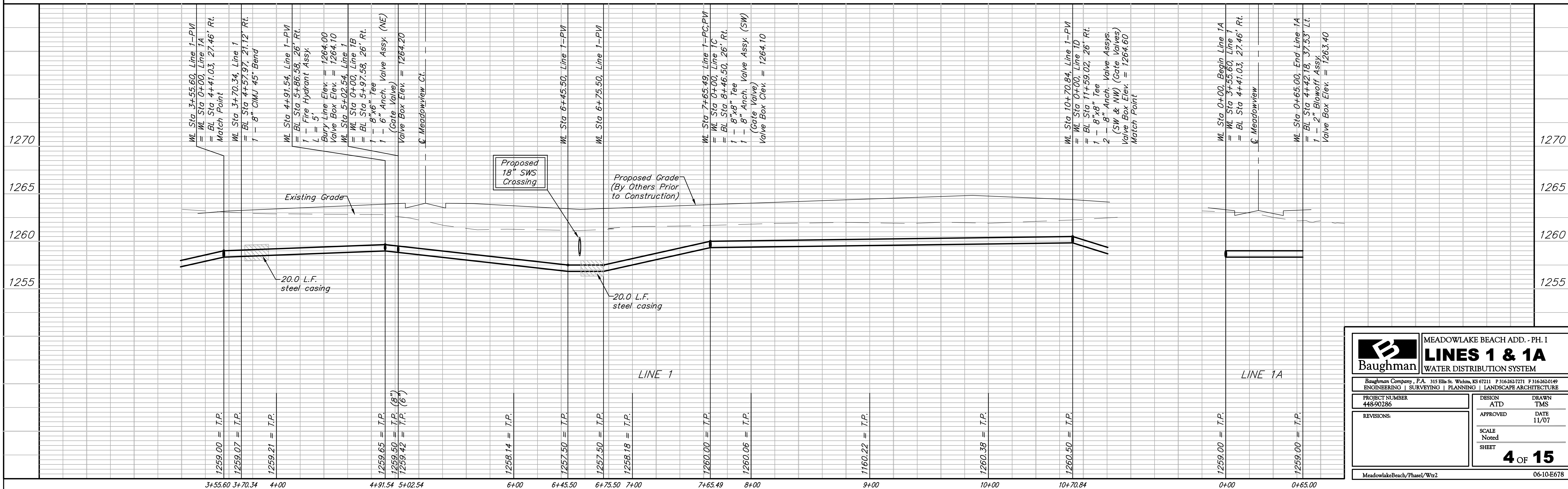
BM #4 - "□" Cut Top of Curb,
East return on East side of
Concrete street North of the
Northwest Corner of Meadowlake
Beach Addition, Sedgwick County,
Kansas.
ELEV. = 1262.95 NGVD29



Scale: 1" = 40' Horizontal
1" = 5' Vertical
• = Iron

Curve #1
Curve Data Based on Waterline
Rad. = 201' Delta = 34°09' 53" Tangent = 61.77'
Arc = 119.86' L.C. = 118.09' Del/Ft. = 8.55116 Min.

Station	Arc	CHORD LENGTHS 6' Rt.	Defl.	T. Defl.
6+57.03	-	-	0°00'00"	0°00'00"
6+75.00	17.97'	18.50'	2°33'40"	2°33'40"
7+00.00	25.00'	25.73'	3°33'42"	6°07'26"
7+25.00	25.00'	25.73'	3°33'42"	9°41'13"
7+50.00	25.00'	25.73'	3°33'42"	13°15'00"
7+65.49	15.49'	15.95'	2°12'27"	15°27'27"
7+75.00	9.51'	9.79'	1°21'19"	16°48'47"
7+76.89	1.89'	1.95'	0°16'10"	17°04'56"



Baughman MEADOWLAKE BEACH ADD. - PH. I
LINES 1 & 1A
WATER DISTRIBUTION SYSTEM

PROJECT NUMBER: 448-90286
DESIGN: ATD
APPROVED: [Signature]
DATE: 11/07

REVISIONS:

SCALE: Noted
SHEET: **4 OF 15**

MeadowlakeBeach/Phase1/Wtr2 06-10-E678