

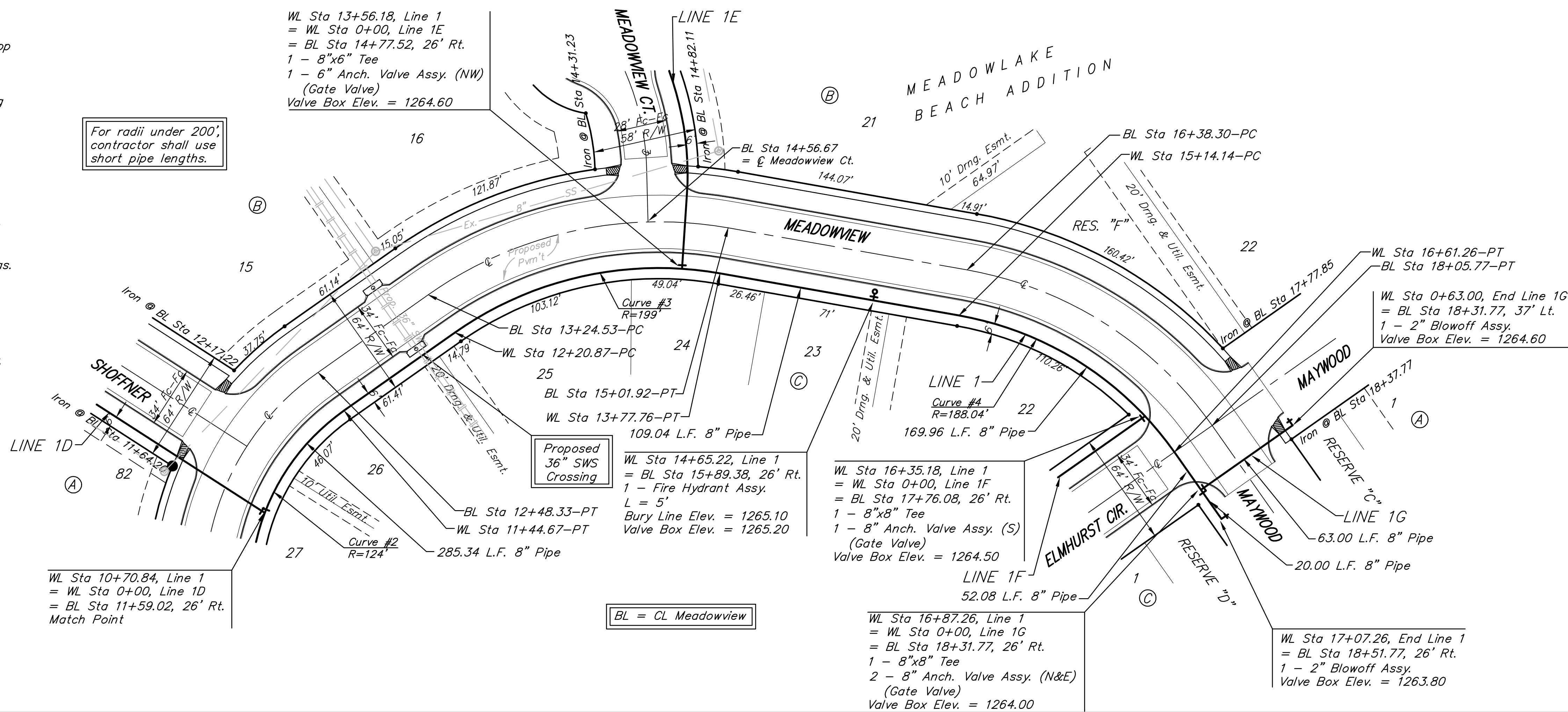
BM #1 - City of Wichita
Benchmark Disc, SE Corner of
Clifton and 55th Street South,
Southwest corner of RCBC, on top
of hubguard at the West end.
ELEV. = 1263.29 NGVD29

BM #2 - "□" Cut on wall footing
located 29' North of the South
end of wall, at the Southeast
corner of Lot 7 Block A,
Meadowlake Beach Addition,
Sedgwick County, Kansas.
ELEV. = 1266.82 NGVD29

BM #3 - "□" Cut Top of Curb,
West side South end of Concrete
street North west of Northeast
corner of Meadowlake Beach
Addition, Sedgwick County, Kansas.
ELEV. = 1262.86 NGVD29

BM #4 - "□" Cut Top of Curb,
East return on East side of
Concrete street North of the
Northwest Corner of Meadowlake
Beach Addition, Sedgwick County,
Kansas.
ELEV. = 1262.95 NGVD29

For radii under 200',
contractor shall use
short pipe lengths.



Scale: 1" = 40' Horizontal
1" = 5' Vertical
• = Iron

Curve #2
Curve Data Based on Waterline
Rad. = 124' Delta = 53° 12' 02" Tangent = 62.10'
Arc = 115.14' L.C. = 111.05' Def/Ft. = 13.86153 Min.

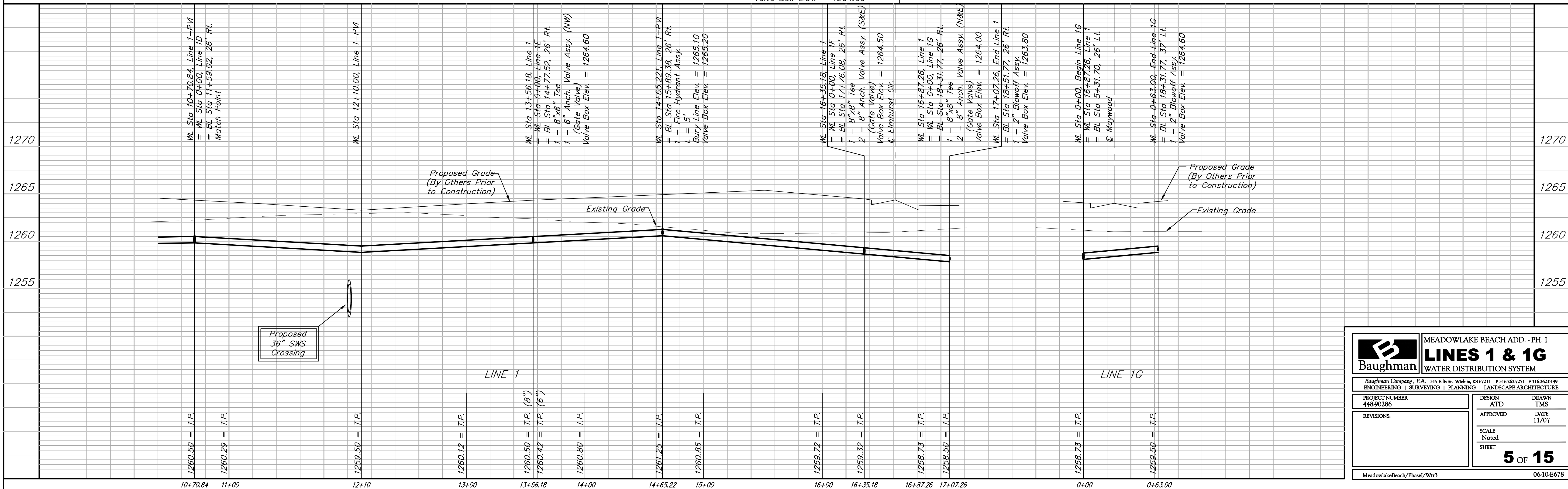
Station	Arc	CHORD LENGTHS		
		6' Rt.	Defl.	T. Defl.
10+29.53	-	-	0'00"00"	0'00"00"
10+50.00	20.47'	19.46'	4'43'45"	4'43'45"
10+70.84	20.84'	19.81'	4'48'52"	9'32'37"
10+75.00	4.16'	3.96'	0'57'40"	10'30'17"
11+00.00	25.00'	23.75'	5'46'32"	16'16'49"
11+25.00	25.00'	23.75'	5'46'32"	22'03'21"
11+44.67	19.67'	18.70'	4'32'39"	26'36'01"

Curve #3
Curve Data Based on Waterline
Rad. = 199' Delta = 45° 10' 15" Tangent = 82.78'
Arc = 156.89' L.C. = 152.86' Def/Ft. = 8.63742 Min.

Station	Arc	CHORD LENGTHS		
		6' Rt.	Defl.	T. Defl.
12+20.87	-	-	0'00"00"	0'00"00"
12+25.00	4.13'	4.01'	0'35'40"	0'35'40"
12+50.00	25.00'	24.23'	3'35'56"	4'11'36"
12+75.00	25.00'	24.23'	3'35'56"	7'47'32"
13+00.00	25.00'	24.23'	3'35'56"	11'23'29"
13+25.00	25.00'	24.23'	3'35'56"	14'59'25"
13+50.00	25.00'	24.23'	3'35'56"	18'35'21"
13+56.18	6.18'	5.99'	0'53'23"	19'28'44"
13+75.00	18.82'	18.25'	2'42'33"	22'11'17"
13+77.76	2.76'	2.68'	0'23'50"	22'35'07"

Curve #4
Curve Data Based on Waterline
Rad. = 188.04' Delta = 44° 49' 45" Tangent = 77.56'
Arc = 147.12' L.C. = 143.40' Def/Ft. = 9.14135 Min.

Station	Arc	CHORD LENGTHS		
		6' Rt.	Defl.	T. Defl.
15+14.14	-	-	0'00"00"	0'00"00"
15+25.00	10.86'	10.51'	1'39'16"	1'39'16"
15+50.00	25.00'	24.19'	3'48'32"	5'27'48"
15+75.00	25.00'	24.19'	3'48'32"	9'16'20"
16+00.00	25.00'	24.19'	3'48'32"	13'04'52"
16+25.00	25.00'	24.19'	3'48'32"	16'53'24"
16+35.18	10.18'	9.85'	1'33'03"	18'26'28"
16+50.00	14.82'	14.34'	2'15'28"	20'41'56"
16+61.26	11.26'	10.90'	1'42'56"	22'24'52"



Baughman MEADOWLAKE BEACH ADD. - PH. I
LINES 1 & 1G
WATER DISTRIBUTION SYSTEM

Baughman Company, P.A. 315 Ellis St. Wichita, KS 67211 P 316-262-7271 F 316-262-0149
ENGINEERING | SURVEYING | PLANNING | LANDSCAPE ARCHITECTURE

PROJECT NUMBER 448-90286	DESIGN ATD	DRAWN TMS
APPROVED	DATE 11/07	
REVISIONS:	SCALE Noted	SHEET 5 OF 15

MeadowlakeBeach/Phase1/Wtr3 06-10-E678