

BM #1 - City of Wichita
Benchmark Disc, SE Corner of
Clifton and 55th Street South,
Southwest corner of RCBC, on top
of hubguard at the West end.
ELEV. = 1263.29 NGVD29

BM #2 - "C" Cut on wall footing
located 29' North of the South
end of wall, at the Southeast
corner of Lot 7 Block A,
Meadowlake Beach Addition,
Sedgwick County, Kansas.
ELEV. = 1266.82 NGVD29

BM #3 - "C" Cut Top of Curb,
West side South end of Concrete
street North west of Northeast
corner of Meadowlake Beach
Addition, Sedgwick County, Kansas.
ELEV. = 1262.86 NGVD29

BM #4 - "C" Cut Top of Curb,
East return on East side of
Concrete street North of the
Northwest Corner of Meadowlake
Beach Addition, Sedgwick County,
Kansas.
ELEV. = 1262.95 NGVD29

WL Sta 3+08.23, End Line 1B
= BL Sta 1+68.08, 39.73' Lt.
1 - 2" Blowoff Assy.
Valve Box Elev. = 1265.30

30.24 L.F. 6" Pipe

WL Sta 2+77.99, Line 1B
= BL Sta 1+98.33, 39.73' Lt.
1 - 6" CIMJ 45° Bend

32.91 L.F. 6" Pipe

WL Sta 2+45.08, Line 1B
= BL Sta 2+21.60, 16.46' Lt.
1 - 6" CIMJ 45° Bend

32.91 L.F. 6" Pipe

WL Sta 2+12.17, Line 1B
= BL Sta 2+21.60, 16.46' Rt.
1 - 6" CIMJ 45° Bend

32.91 L.F. 6" Pipe

WL Sta 1+79.26, Line 1B
= BL Sta 1+98.33, 39.73' Rt.
1 - 6" CIMJ 45° Bend

32.91 L.F. 6" Pipe

WL Sta 1+22.69, Line 1B
= BL Sta 1+48.69, 23' Rt.
1 - 6" CIMJ 45° Bend

WL Sta 1+46.35, Line 1B
= BL Sta 1+65.42, 39.73' Rt.
1 - 6" CIMJ 45° Bend

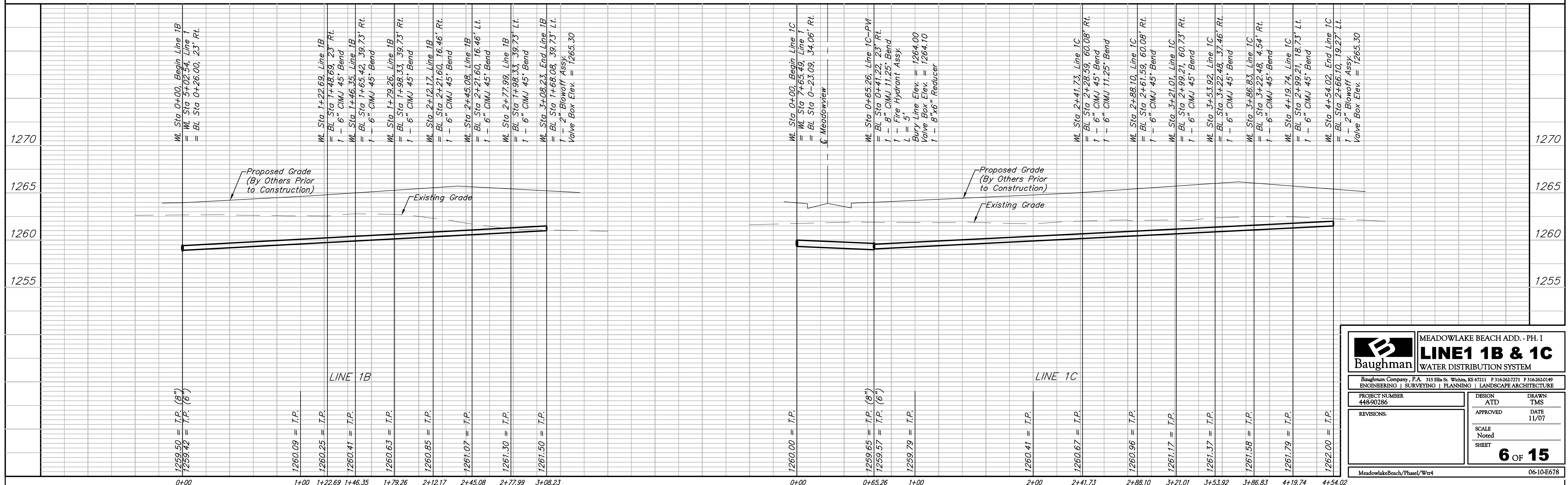
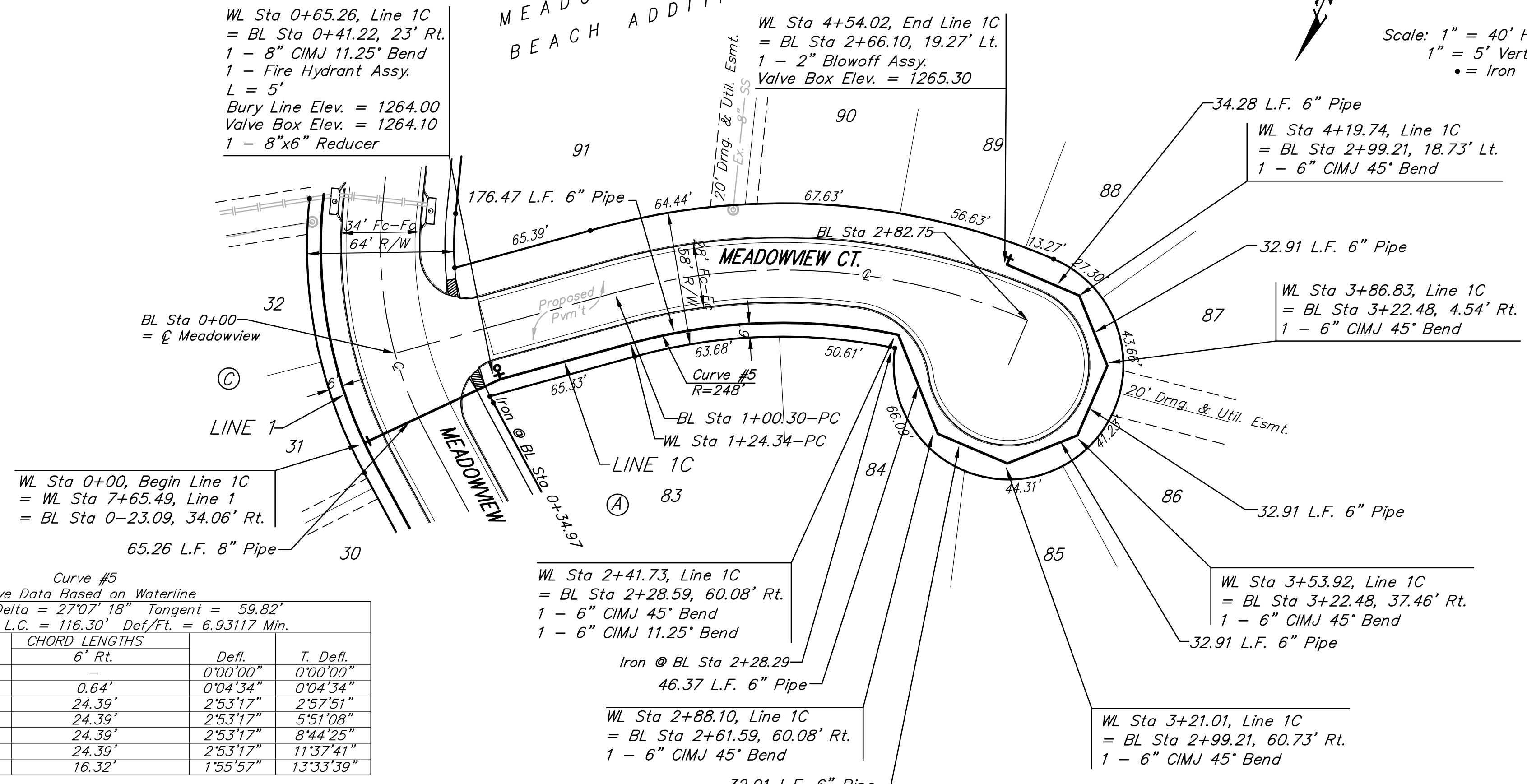
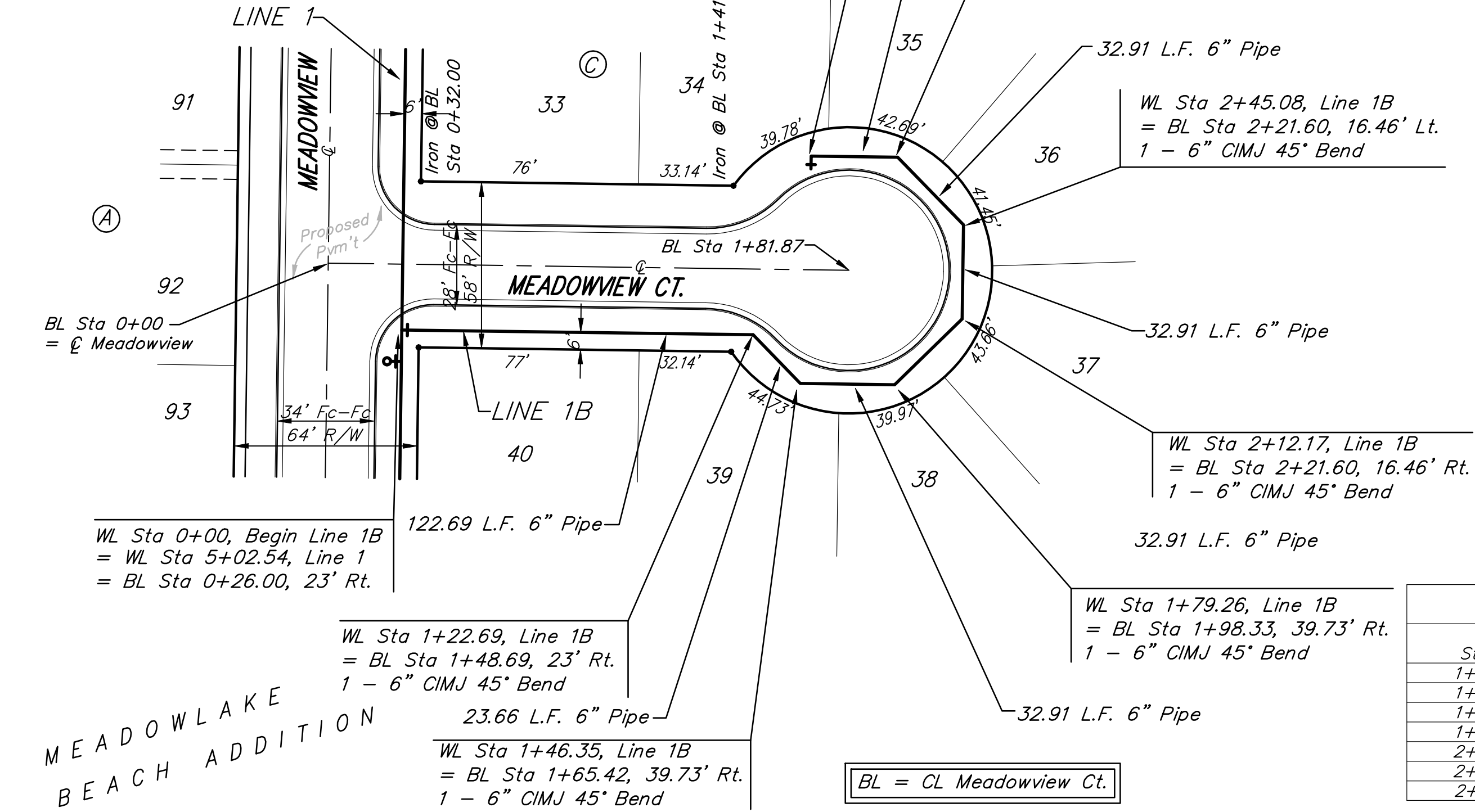
BL = CL Meadowview Ct.

Curve #5
Curve Data Based on Waterline
Rad. = 248' Delta = 27°07'18" Tangent = 59.82'
Arc = 117.39' L.C. = 116.30' Def/Ft. = 6.93117 Min.

Station	CHORD LENGTHS		Defl.	T. Defl.
	6" Rt.	6" Lt.		
1+24.34	-	-	0'00"00"	0'00"00"
1+25.00	0.66'	0.64'	0'04"34"	0'04"34"
1+50.00	25.00'	24.39'	2'53"17"	2'57"51"
1+75.00	25.00'	24.39'	2'53"17"	5'51"08"
2+00.00	25.00'	24.39'	2'53"17"	8'44"25"
2+25.00	25.00'	24.39'	2'53"17"	11'37"41"
2+41.73	16.73'	16.32'	1'55"57"	13'33"39"

BL = CL Meadowview Ct.

Scale: 1" = 40' Horizontal
1" = 5' Vertical
• = Iron



Baughman MEADOWLAKE BEACH ADD. - PH. I
LINE 1B & 1C
WATER DISTRIBUTION SYSTEM

PROJECT NUMBER: 448-90286
DESIGN: ATD
DRAWN: TMS
APPROVED: [Signature]
DATE: 11/07
SCALE: Noted
SHEET: 6 OF 15

MeadowlakeBeach/Phase/Wtr4 06-10-E678