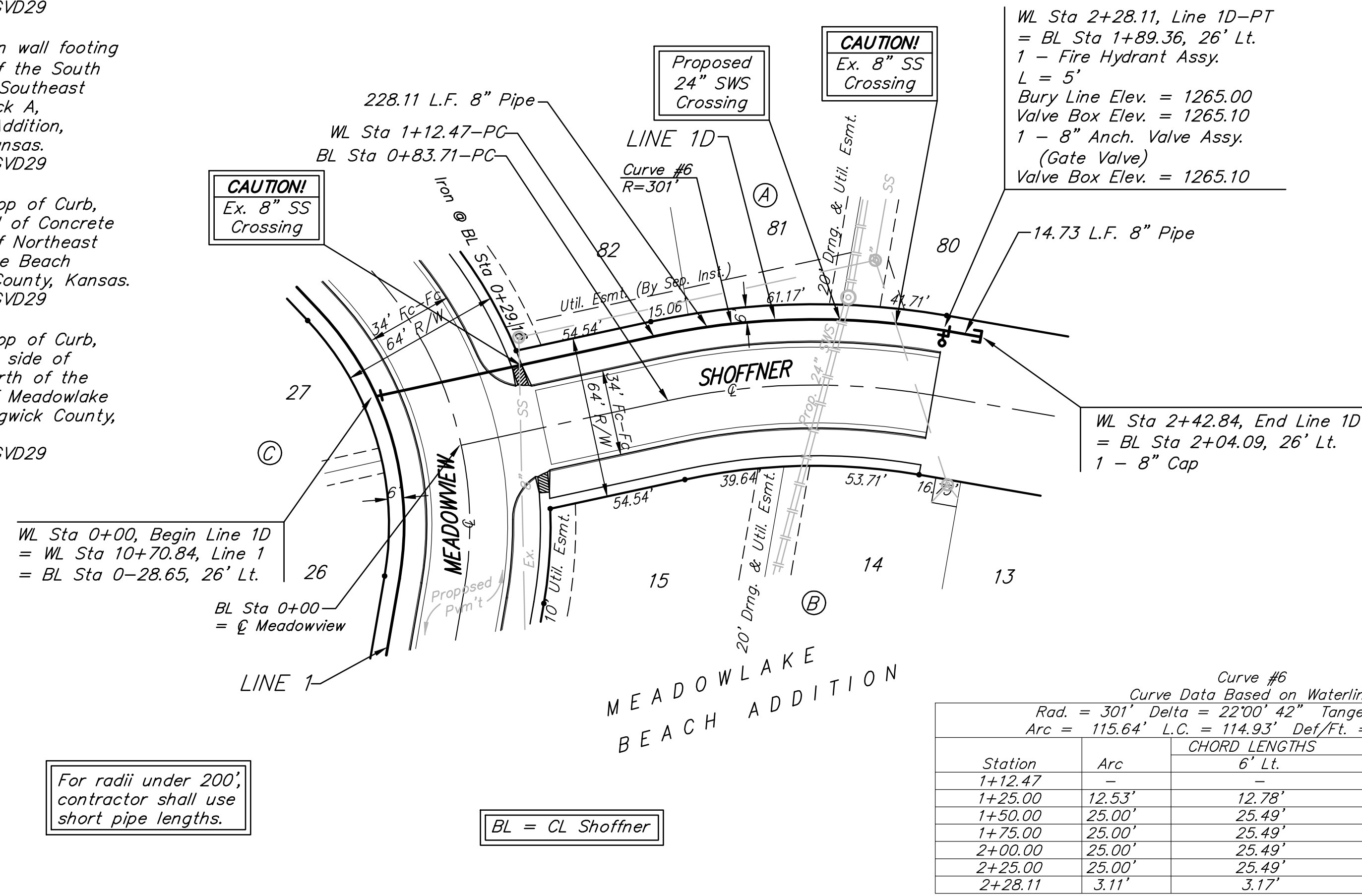


BM #1 - City of Wichita
Benchmark Disc, SE Corner of
Clifton and 55th Street South,
Southwest corner of RCB, on top
of hubguard at the West end.
ELEV. = 1263.29 NGVD29

BM #2 - "□" Cut on wall footing
located 29' North of the South
end of wall, at the Southeast
corner of Lot 7 Block A,
Meadowlake Beach Addition,
Sedgwick County, Kansas.
ELEV. = 1266.82 NGVD29

BM #3 - "□" Cut Top of Curb,
West side South end of Concrete
street North west of Northeast
corner of Meadowlake Beach
Addition, Sedgwick County, Kansas.
ELEV. = 1262.86 NGVD29

BM #4 - "□" Cut Top of Curb,
East return on East side of
Concrete street North of the
Northwest Corner of Meadowlake
Beach Addition, Sedgwick County,
Kansas.
ELEV. = 1262.95 NGVD29

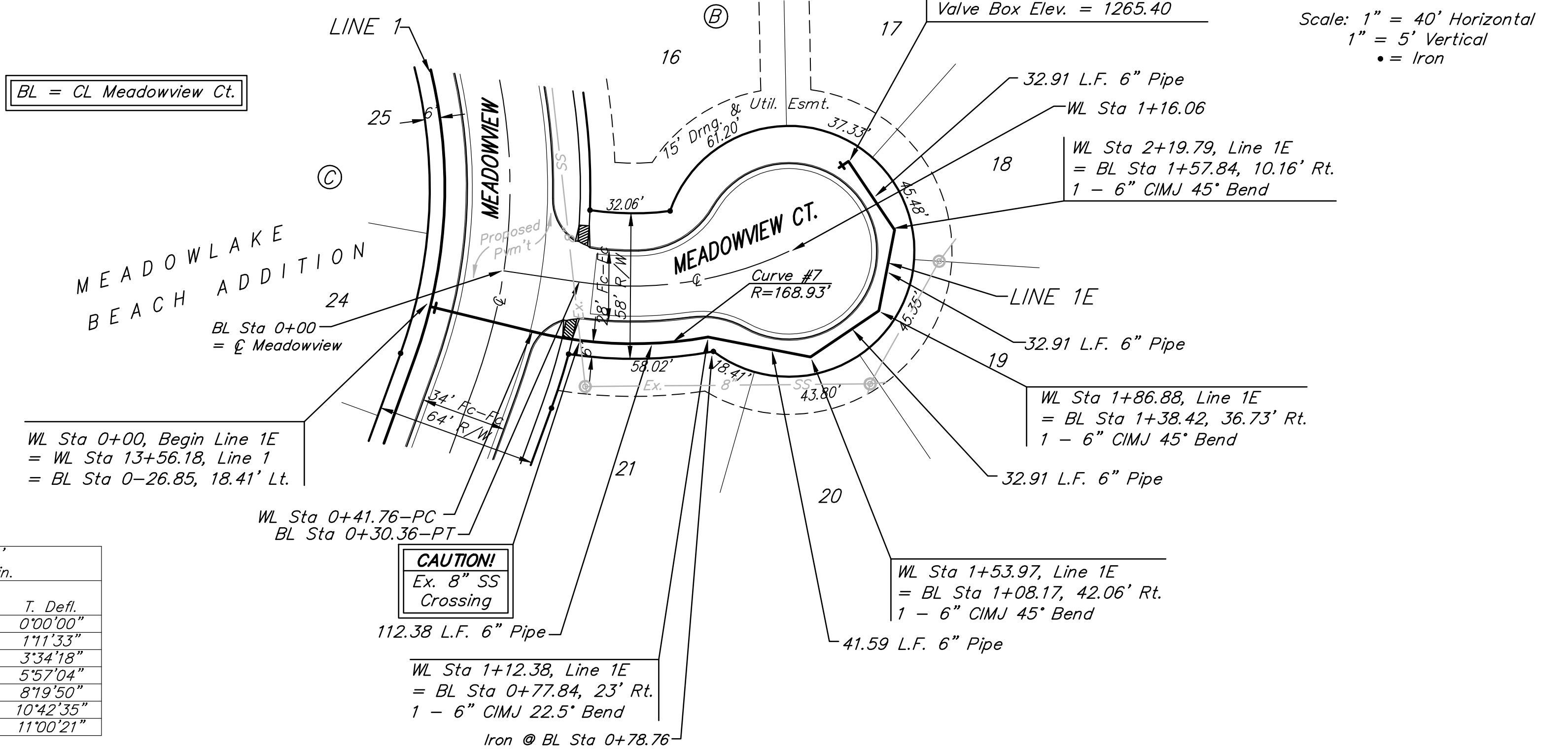


Curve #6
Curve Data Based on Waterline
Rad. = 301' Delta = 22°00'42" Tangent = 58.54'
Arc = 115.64' L.C. = 114.93' Def/Ft. = 5.71039 Min.

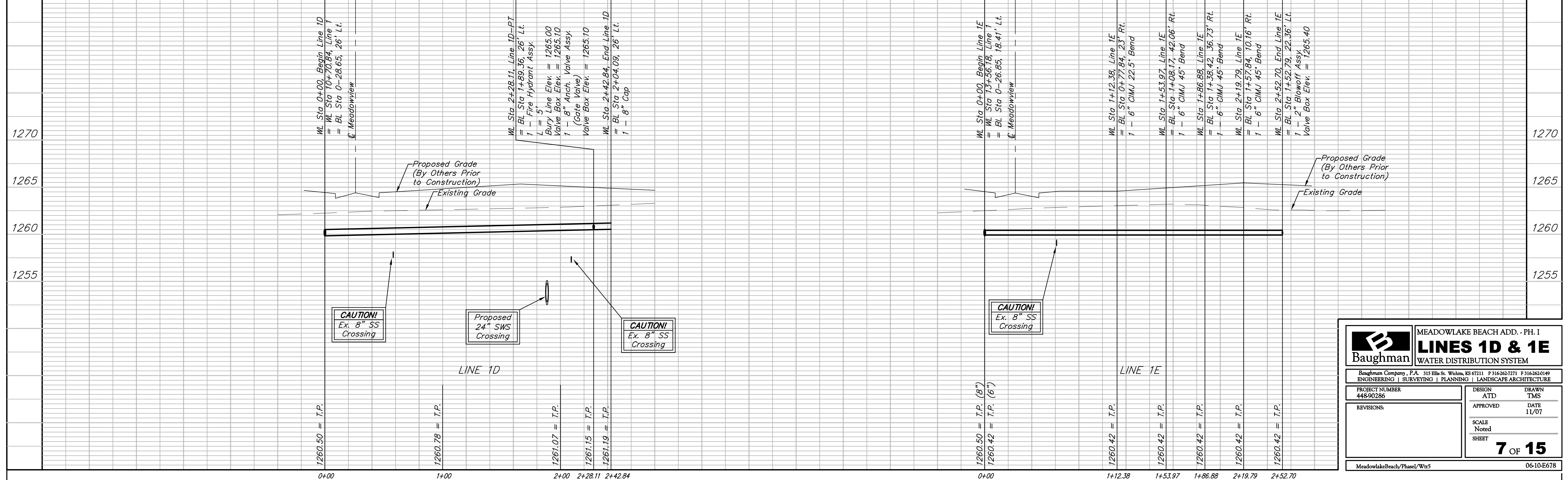
Station	Arc	CHORD LENGTHS 6' Lt.	Defl. 6"	T. Defl. 6"
1+12.47	-	-	0°00'00"	0°00'00"
1+25.00	12.53'	12.78'	1°11'33"	1°11'33"
1+50.00	25.00'	25.49'	2°22'45"	3°34'18"
1+75.00	25.00'	25.49'	2°22'45"	5°57'04"
2+00.00	25.00'	25.49'	2°22'45"	8°19'50"
2+25.00	25.00'	25.49'	2°22'45"	10°42'35"
2+28.11	3.11'	3.17'	0°17'45"	11°00'21"

Curve #7
Curve Data Based on Waterline
Rad. = 168.93' Delta = 23°57'11" Tangent = 35.83'
Arc = 70.62' L.C. = 70.11' Def/Ft. = 10.17547 Min.

Station	Arc	CHORD LENGTHS 6' Rt.	Defl. 6"	T. Defl. 6"
0+41.76	-	-	0°00'00"	0°00'00"
0+50.00	8.24'	8.53'	1°23'51"	1°23'51"
0+75.00	25.00'	25.87'	4°14'23"	5°38'14"
1+00.00	25.00'	25.87'	4°14'23"	9°52'37"
1+12.38	12.38'	12.82'	2°05'58"	11°58'35"



Scale: 1" = 40' Horizontal
1" = 5' Vertical
• = Iron



Baughman MEADOWLAKE BEACH ADD. - PH. I
LINES 1D & 1E
WATER DISTRIBUTION SYSTEM

Baughman Company, P.A. 315 Ellis St. Wichita, KS 67211 P 316-262-7271 F 316-262-0149
ENGINEERING | SURVEYING | PLANNING | LANDSCAPE ARCHITECTURE

PROJECT NUMBER 448-90286	DESIGN ATTD	DRAWN TMS
REVISIONS:	APPROVED	DATE 11/07
SCALE Noted		SHEET 7 OF 15

MeadowlakeBeach/Phase1/Wtr5 06-10-E678