

BM #1 - City of Wichita
Benchmark Disc, SE Corner of
Clifton and 55th Street South,
Southwest corner of RCBC, on top
of hubguard at the West end.
ELEV. = 1263.29 NGVD29

BM #2 - "□" Cut on wall footing
located 29' North of the South
end of wall, at the Southeast
corner of Lot 7 Block A,
Meadowlake Beach Addition,
Sedgwick County, Kansas.
ELEV. = 1266.82 NGVD29

BM #3 - "□" Cut Top of Curb,
West side South end of Concrete
street North west of Northeast
corner of Meadowlake Beach
Addition, Sedgwick County, Kansas.
ELEV. = 1262.86 NGVD29

BM #4 - "□" Cut Top of Curb,
East return on East side of
Concrete street North of the
Northwest Corner of Meadowlake
Beach Addition, Sedgwick County,
Kansas.
ELEV. = 1262.95 NGVD29

Curve #8
Curve Data Based on Waterline
Rad. = 146' Delta = 53° 12' 02" Tangent = 73.11'
Arc = 135.56' L.C. = 130.75' Def/Ft. = 11.77351 Min.

Station	Arc	CHORD LENGTHS	Defl.	T. Defl.
2+24.14	-	6' Rt.	0'00"00"	0'00"00"
2+25.00	0.86'	0.90'	0'10"07"	0'10"07"
2+50.00	25.00'	26.00'	4'54"20"	5'04"28"
2+75.00	25.00'	26.00'	4'54"20"	9'58"48"
3+00.00	25.00'	26.00'	4'54"20"	14'53"08"
3+25.00	25.00'	26.00'	4'54"20"	19'47"28"
3+50.00	25.00'	26.00'	4'54"20"	24'41"49"
3+59.70	9.70'	10.10'	1'54"12"	26'36"01"

WL Sta 5+13.20, Line 1F-PC
= BL Sta 5+16.86, 26' Rt.
Match Point

WL Sta 5+33.49, Line 1F
= BL Sta 5+32.97, 26' Rt.
1 - Fire Hydrant Assy.
L = 5'
Bury Line Elev. = 1263.50
Valve Box Elev. = 1263.60
1 - 8"x6" Reducer

WL Sta 10+25.98, End Line 1F
= BL Sta 8+63.95, 41.31' Lt.
1 - 2" Blowoff Assy.
Valve Box Elev. = 1265.20

WL Sta 9+90.83, Line 1F
= BL Sta 8+88.81, 16.45' Lt.
1 - 6" CIMJ 45° Bend

WL Sta 9+57.92, Line 1F
= BL Sta 8+88.81, 16.45' Rt.
1 - 6" CIMJ 45° Bend

WL Sta 9+25.01, Line 1F
= BL Sta 8+65.54, 39.73' Rt.
1 - 6" CIMJ 45° Bend

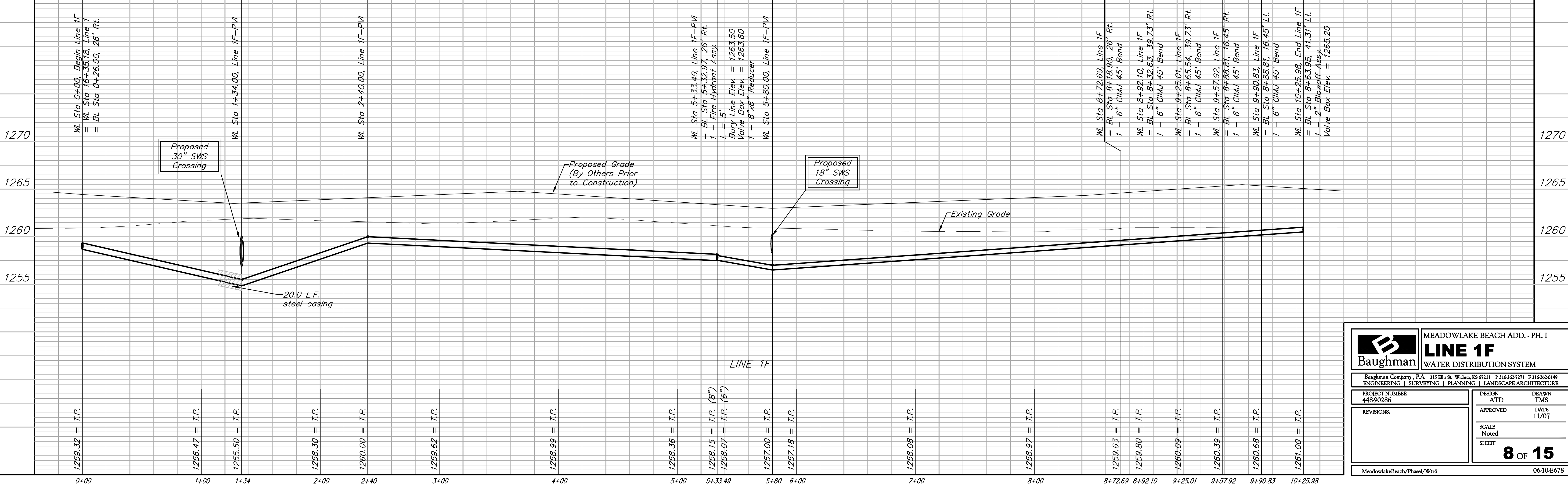
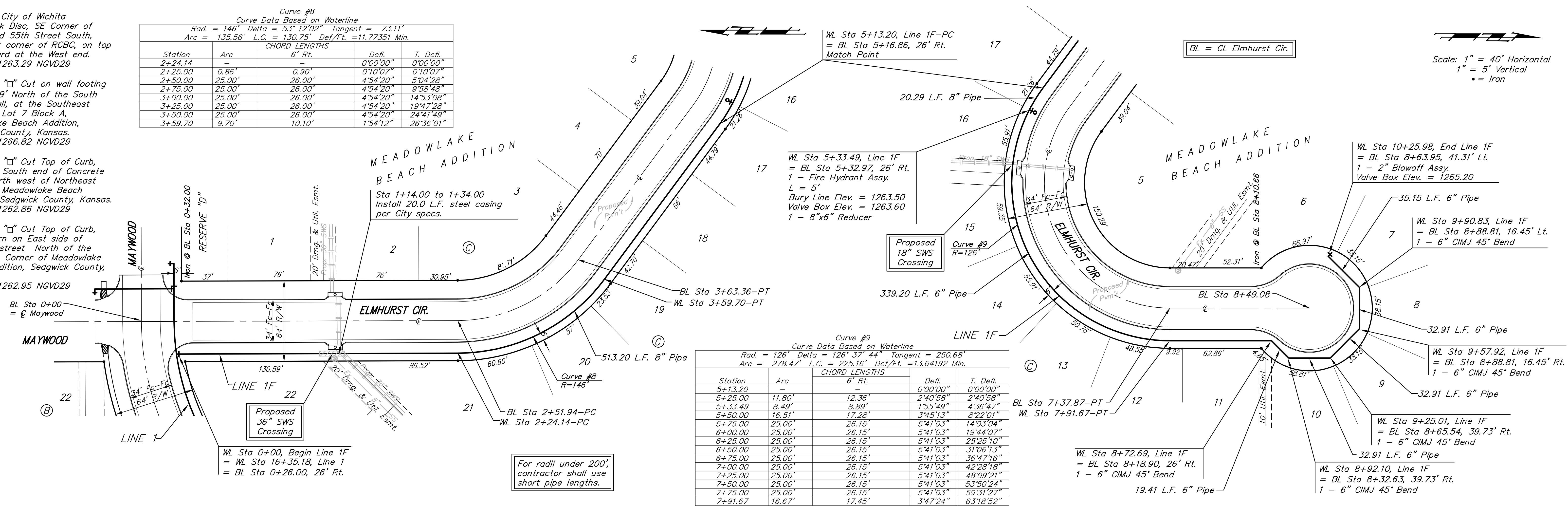
WL Sta 8+92.10, Line 1F
= BL Sta 8+32.63, 39.73' Rt.
1 - 6" CIMJ 45° Bend

Curve #9
Curve Data Based on Waterline
Rad. = 126' Delta = 126° 37' 44" Tangent = 250.68'
Arc = 278.47' L.C. = 225.16' Def/Ft. = 13.64192 Min.

Station	Arc	CHORD LENGTHS	Defl.	T. Defl.
5+13.20	-	6' Rt.	0'00"00"	0'00"00"
5+25.00	11.80'	12.36'	2'40"58"	2'40"58"
5+33.49	8.49'	8.89'	1'55"49"	4'36"47"
5+50.00	16.51'	17.28'	3'45"13"	8'22"01"
5+75.00	25.00'	26.15'	5'41"03"	14'03"04"
6+00.00	25.00'	26.15'	5'41"03"	19'44"07"
6+25.00	25.00'	26.15'	5'41"03"	25'25"10"
6+50.00	25.00'	26.15'	5'41"03"	31'06"13"
6+75.00	25.00'	26.15'	5'41"03"	36'47"16"
7+00.00	25.00'	26.15'	5'41"03"	42'28"18"
7+25.00	25.00'	26.15'	5'41"03"	48'09"21"
7+50.00	25.00'	26.15'	5'41"03"	53'50"24"
7+75.00	25.00'	26.15'	5'41"03"	59'31"27"
7+91.67	16.67'	17.45'	3'47"24"	63'18"52"

For radii under 200',
contractor shall use
short pipe lengths.

Scale: 1" = 40' Horizontal
1" = 5' Vertical
• = Iron



Baughman MEADOWLAKE BEACH ADD. - PH. I
LINE 1F
WATER DISTRIBUTION SYSTEM

Baughman Company, P.A. 315 Ellis St. Wichita, KS 67211 P 316-262-7271 F 316-262-0149
ENGINEERING | SURVEYING | PLANNING | LANDSCAPE ARCHITECTURE

PROJECT NUMBER 448-90286	DESIGN ATD
REVISIONS:	APPROVED DATE 11/07
SCALE Noted SHEET	

8 OF 15

MeadowlakeBeach/PhaseI/Water 06-10-E678