

**BENCHMARKS:**  
 BM #1: "C" Cut on Top of Curb at West Line of Lot 7, Block A, Auburn Hills 5th Addition. Elev. = 207.73 (City Datum)

BM #2: Disc in Back of Curb, North of Front Corner, Common to Lots 23 and 24, Block D, Auburn Hills 12th Addition. Elev. = 191.84 (City Datum)

Scale: 1" = 40' Horizontal  
 1" = 5' Vertical  
 • = Iron

Scale: 1" = 40' Horizontal  
 1" = 5' Vertical  
 • = Iron

Note: Contractor shall use short pipe lengths for Radii under 200'

WL Sta 0+00, Begin Line 2  
 WL Sta 2+63.78, Line 1  
 = BL Sta 0+26.00, 26' Rt.

Curve #3

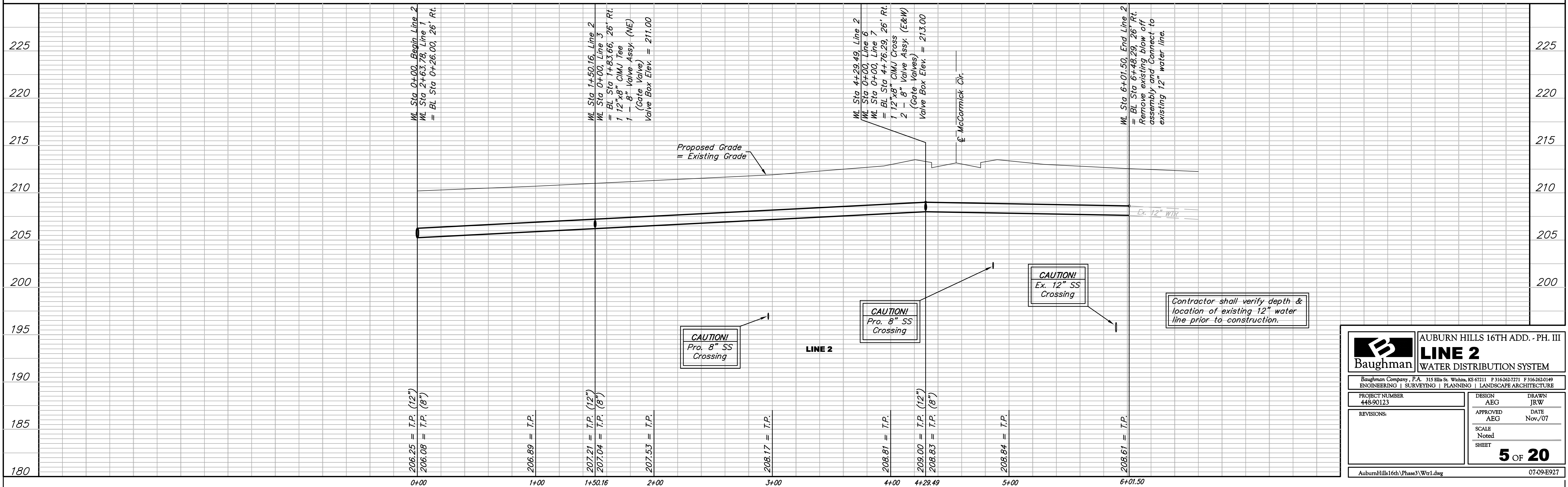
Curve Data Based on Centerline

Rad. = 174' Delta = 45°49'39" Tangent = 73.55'  
 Arc = 139.18' L.C. = 135.49' Def./Ft. = 9.87804 Min.

Station	Arc	CHORD LENGTHS		Total Defl.
		6' Right	Defl.	
0+99.97	-	-	0'00"00"	0'00"00"
1+00.00	0.03'	0.03'	0'00"18"	0'00"18"
1+25.00	25.00'	21.68'	4'06"57"	4'07"15"
1+50.00	25.00'	21.68'	4'06"57"	8'14"12"
1+75.00	25.00'	21.68'	4'06"57"	12'21"09"
2+00.00	25.00'	21.68'	4'06"57"	16'28"06"
2+25.00	25.00'	21.68'	4'06"57"	20'35"03"
2+39.15	14.15'	12.28'	2'19"47"	22'54"50"

WL Sta 1+50.16, Line 2  
 WL Sta 0+00, Line 3  
 = BL Sta 1+83.66, 26' Rt.  
 1 12"x8" CIMJ Tee  
 1 - 8" Valve Assy. (NE)  
 (Gate Valve)  
 Valve Box Elev. = 211.00

WL Sta 4+29.49, Line 2  
 WL Sta 0+00, Line 6  
 WL Sta 0+00, Line 7  
 = BL Sta 4+76.29, 26' Rt.  
 1 12"x8" CIMJ Cross  
 2 - 8" Valve Assy. (E&W)  
 (Gate Valves)  
 Valve Box Elev. = 213.00



**Baughman** AUBURN HILLS 16TH ADD. - PH. III  
**LINE 2**  
 WATER DISTRIBUTION SYSTEM

Baughman Company, P.A. 315 Ellis St. Wichita, KS 67211 P 316-262-7711 F 316-262-0149  
 ENGINEERING | SURVEYING | PLANNING | LANDSCAPE ARCHITECTURE

PROJECT NUMBER: 448-90123  
 DESIGN: AEG  
 DRAWN: JRW

APPROVED: AEG  
 DATE: Nov./07

SCALE: Noted  
 SHEET: 5 OF 20

AuburnHills16th(Phase3)Wtr1.dwg 07-09-E927