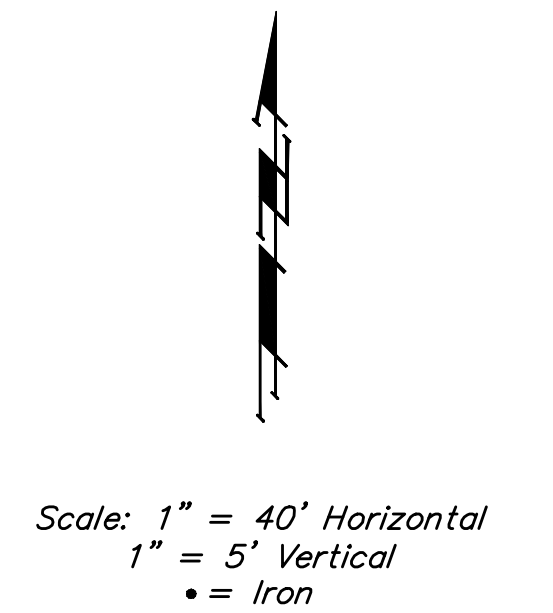
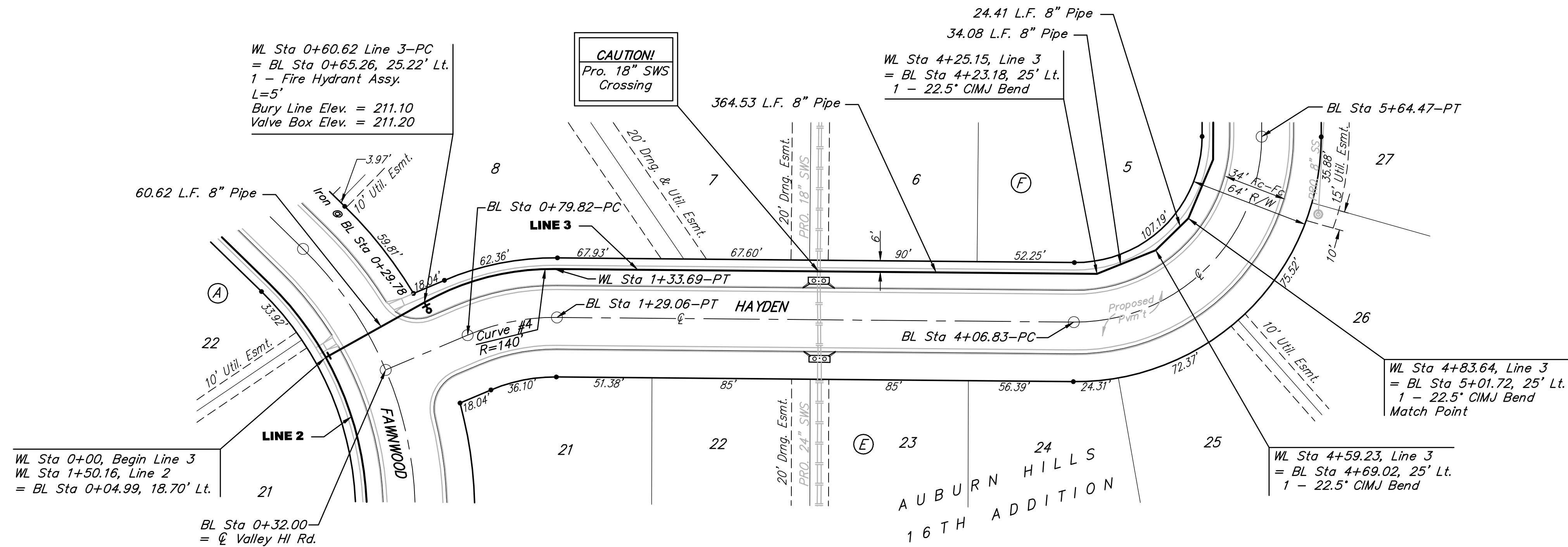


BENCHMARKS:

BM #1: "C" Cut on Top of Curb at West Line of Lot 7, Block A, Auburn Hills 5th Addition. Elev. = 207.73 (City Datum)

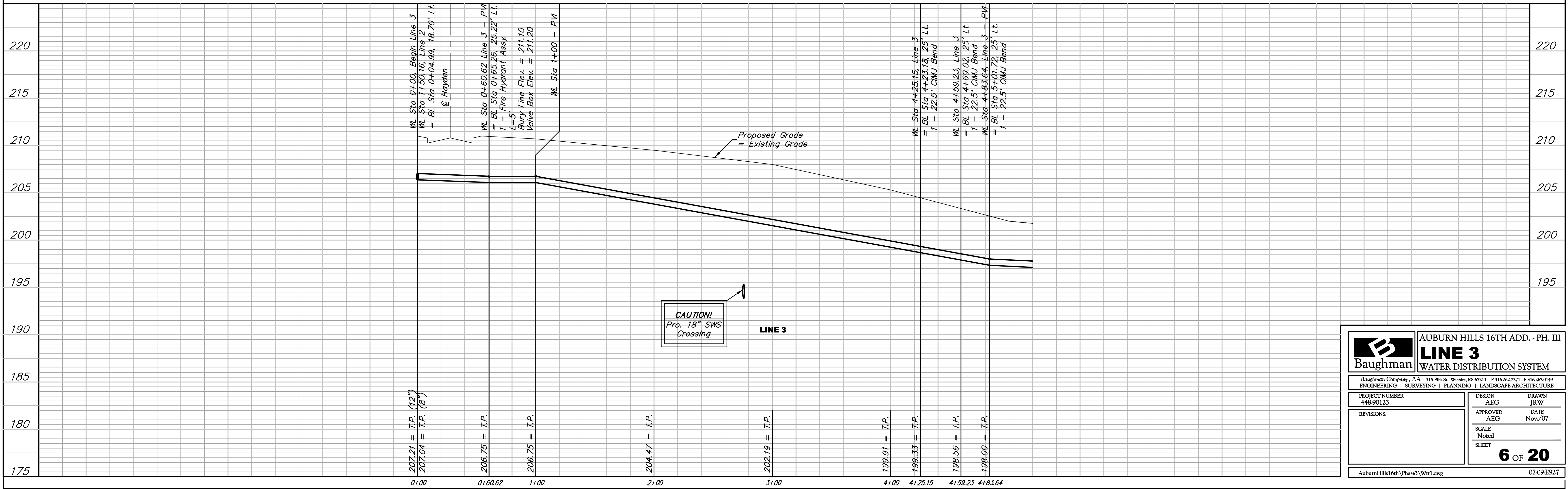
BM #2: Disc in Back of Curb, North of Front Corner Common to Lots 23 and 24, Block D, Auburn Hills 12th Addition. Elev. = 191.84 (City Datum)



Note:
Contractor shall use short pipe lengths for Radii under 200'

Curve #4
Curve Data Based on Centerline
Rad. = 140' Delta = 29°40'41" Tangent = 37.09'
Arc = 73.07' L.C. = 71.71' Def./Ft. = 12.18478 Min.

Station	Arc	CHORD LENGTHS		
		6' Right	Defl.	Total Defl.
0+60.62	-	-	0'00"00"	0'00"00"
0+75.00	14.38'	11.92'	2'55"13"	2'55"13"
1+00.00	25.00'	20.71'	5'04"37"	7'59"50"
1+25.00	25.00'	20.71'	5'04"37"	13'04"27"
1+33.69	8.69'	7.21'	1'45"54"	14'50"21"



Baughman

Baughman Company, P.A. 315 Ellis St. Wichita, KS 67211 P 316-262-7271 F 316-262-0149
ENGINEERING | SURVEYING | PLANNING | LANDSCAPE ARCHITECTURE

AUBURN HILLS 16TH ADD. - PH. III

LINE 3

WATER DISTRIBUTION SYSTEM

PROJECT NUMBER
448-90123

DESIGN
AEG

APPROVED
AEG

REVISIONS:

DRAWN
JRW

DATE
Nov./07

SCALE
Noted

SHEET
6 OF 20

AuburnHills16th(Phase3)Wtr1.dwg 07-09-E927