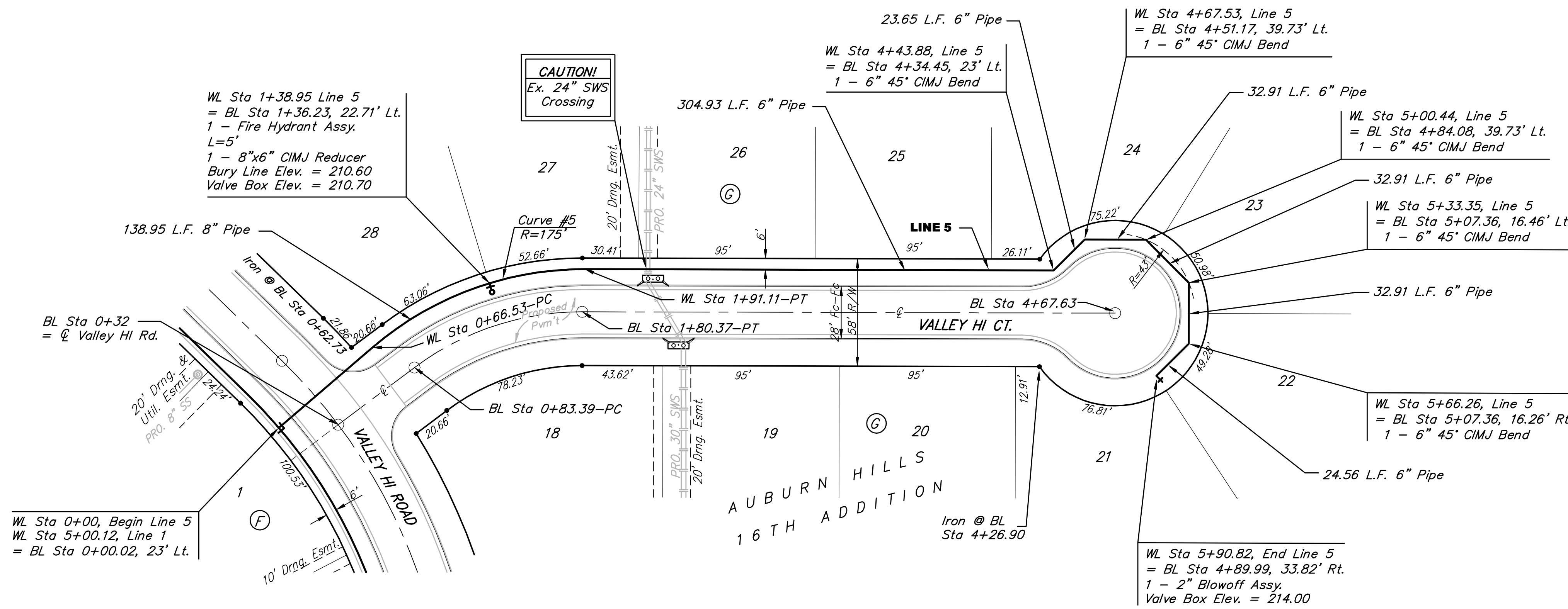


BENCHMARKS:

BM #1: "C" Cut on Top of Curb at West Line of Lot 7, Block A, Auburn Hills 5th Addition. Elev. = 207.73 (City Datum)

BM #2: Disc in Back of Curb, North of Front Corner Common to Lots 23 and 24, Block D, Auburn Hills 12th Addition. Elev. = 191.84 (City Datum)

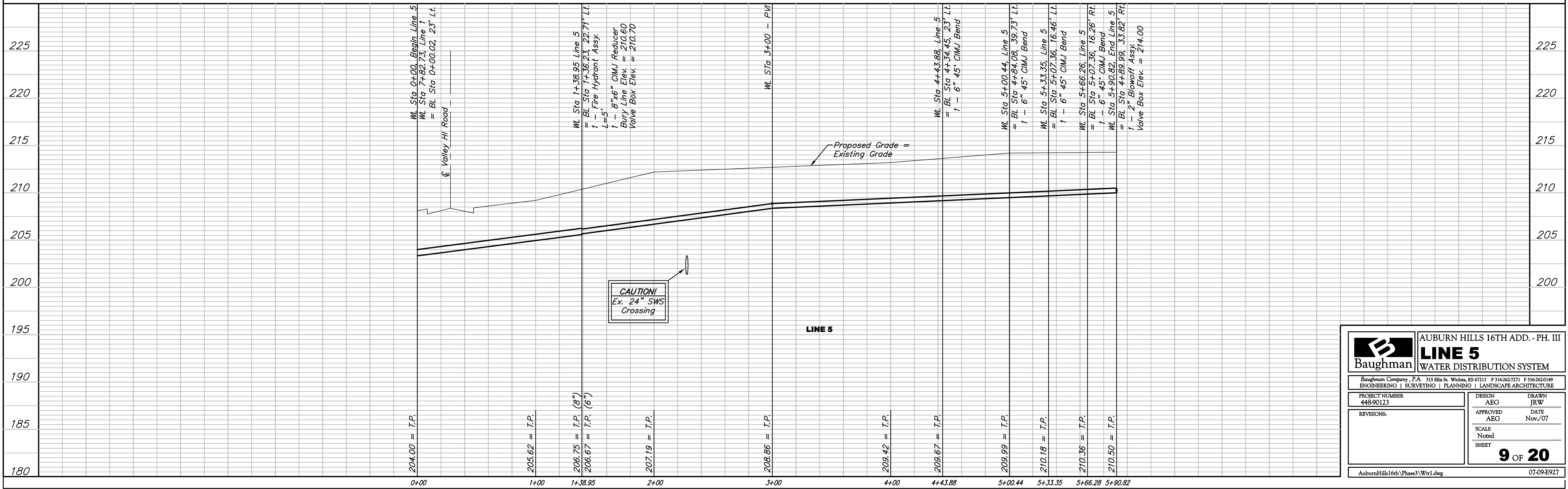


Scale: 1" = 40' Horizontal
1" = 5' Vertical
• = Iron

Note: Contractor shall use short pipe lengths for Radii under 200'

Curve #5
Curve Data Based on Centerline
Rad. = 175' Delta = 40°47'17" Tangent = 65.06'
Arc = 124.58' L.C. = 121.97' Def./Ft. = 9.82214 Min.

Station	Arc	CHORD LENGTHS		Total Defl.
		6' Right	Defl.	
0+66.53	-	-	0'00'00"	0'00'00"
0+75.00	8.47'	7.50'	1'23'12"	1'23'12"
1+00.00	25.00'	22.12'	4'05'33"	5'28'45"
1+25.00	25.00'	22.12'	4'05'33"	9'34'18"
1+50.00	25.00'	22.12'	4'05'33"	13'39'51"
1+75.00	25.00'	22.12'	4'05'33"	17'45'24"
1+91.11	16.11'	14.26'	2'38'15"	20'23'39"



Baughman

Baughman Company, P.A. 315 Ellis St. Wichita, KS 67211 P 316-262-7271 F 316-262-0149
ENGINEERING | SURVEYING | PLANNING | LANDSCAPE ARCHITECTURE

AUBURN HILLS 16TH ADD. - PH. III

LINE 5

WATER DISTRIBUTION SYSTEM

<p>PROJECT NUMBER 448-90123</p> <p>DESIGN AEG</p> <p>DRAWN JRW</p>	<p>APPROVED AEG</p> <p>DATE Nov./07</p> <p>SCALE Noted</p> <p>SHEET 9 OF 20</p>
<p>AuburnHills16th(Phase3)Wtr1.dwg 07-09-E927</p>	