

STA. 10+00.00, LINE 1=  
BL STA. 9+54.61, 20.50 RT.  
8" X 8" TAPPING SLEEVE & VALVE  
TO BE FURNISHED & INSTALLED  
BY C.O.W. WATER DEPT.  
(CONTRACTOR TO REIMBURSE C.O.W.)  
TOP VALVE BOX=1362.20 AB

**CAUTION!!**  
WATER CROSSING

**CAUTION!!**  
FIBER OPTIC CABLE

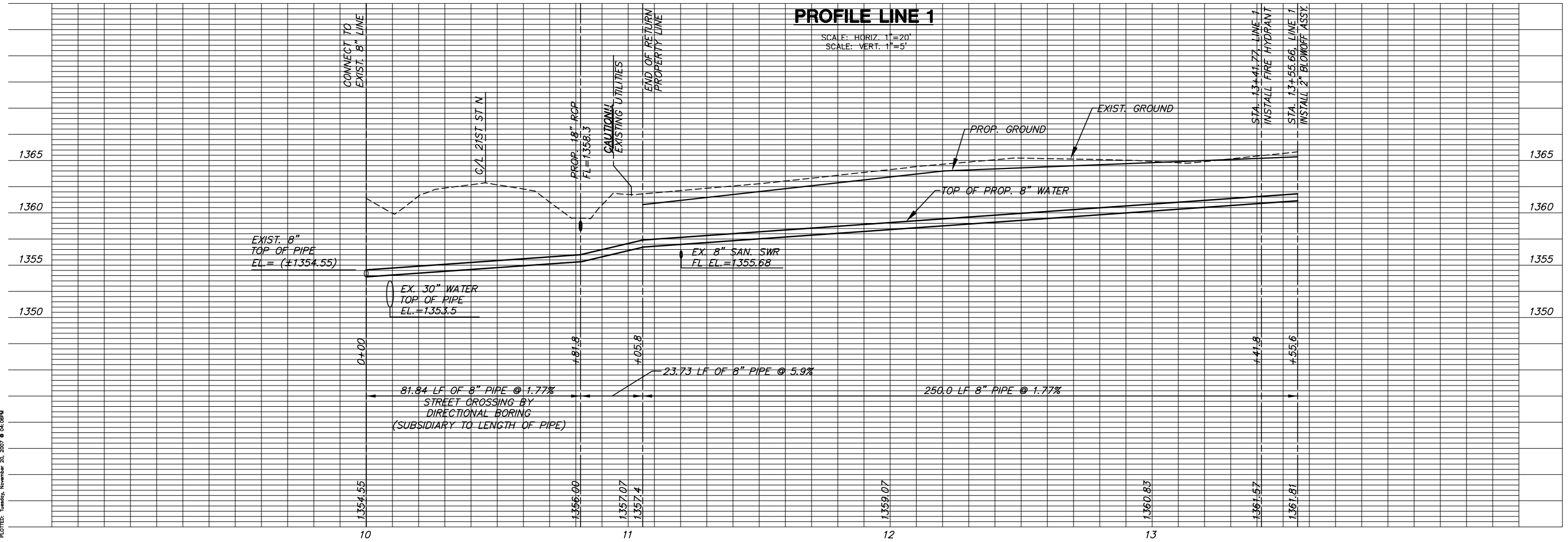
STA. 13+55.66, LINE 1=  
BL STA. 13+10, 20.50 RT  
1-2" BLOWOFF ASSY.  
ELEV.=1365.40 AB

STA. 13+41.77, LINE 1=  
BL STA. 12+96.2, 20.50 RT.  
1-FIRE HYDT. ASSY. (E)  
L=3.5'  
1-8" ACHORED VALVE ASSY. (S)  
VALVE BOX ELEV.=1365.5 AB  
BURY LINE ELEV.=1365.4 1365.64 AB

NOTE:  
CONTRACTOR TO VERIFY  
LOCATION AND ELEVATION OF  
EXIST. 18" WATER LINES PRIOR  
TO CONSTRUCTION.

**PLAN LINE 1**

**AS-BUILT NOVEMBER 2007**



**PROFILE LINE 1**

SCALE: HORIZ. 1"=20'  
SCALE: VERT. 1"=5'

PLOTTED: Tuesday, November 20, 2007 @ 04:08PM

**REED COMM.  
DR. WATER**  
SHEET TITLE  
07281/1331PPW  
PROJECT NUMBER

JTC/SRS  
DESIGN BY  
JWC  
DRAWN BY  
GJA  
CHECKED BY

ISSUED  
November 2007  
REVISED

SHEET NO.  
**3 of 3**

J:\CIVIL\07281.DWG WTR AS-BUILT\07281C1.DWG