

TOPOGRAPHIC SURVEY

Lot 2

West Towne Industrial Addition

Wichita, Sedgwick County, Kansas.

1440 S. Hoover, Wichita, Kansas

Hoover Road

WOODS DATE 4/24/97M
NAD2011 W 4/25/97
20' Utility Easement
35' Building Setback

Lot 2

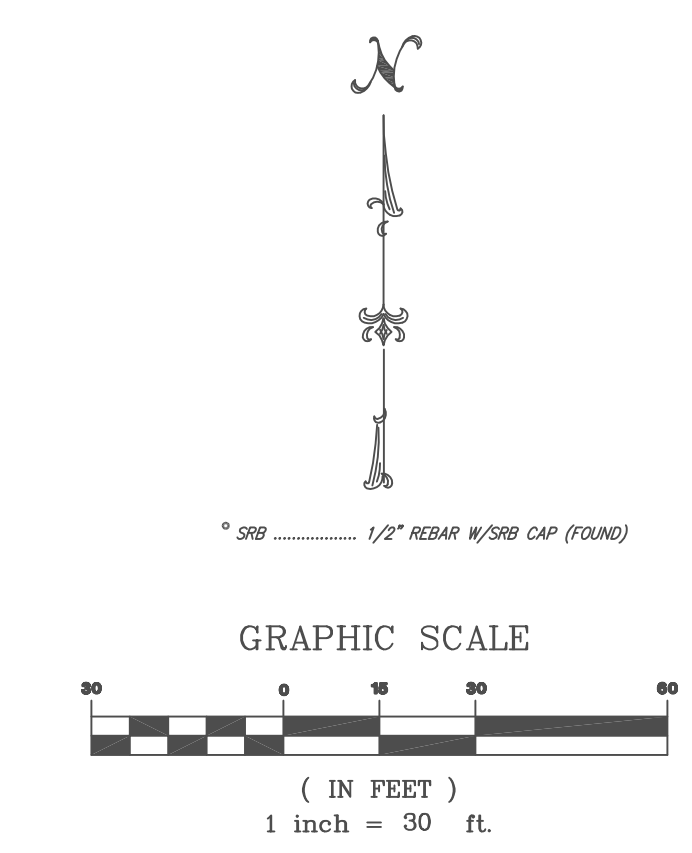
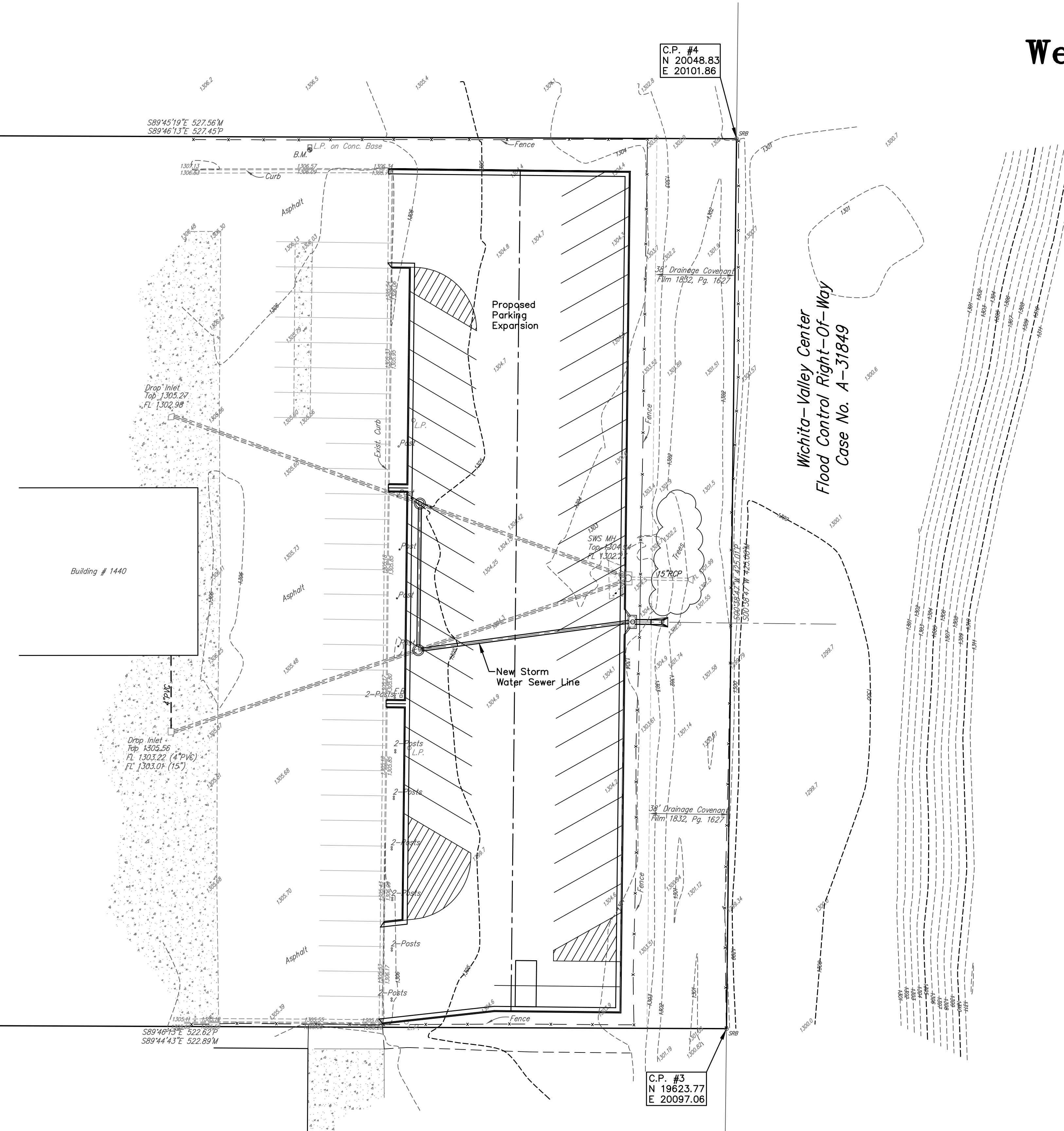
Building # 1440

C.P. #4
N 20048.83
E 20101.86

C.P. #1
N 20041.08
E 19574.30

C.P. #2
N 19526.10
E 19574.17

C.P. #3
N 19623.77
E 20097.06



Bench Mark:
□ on south side of Conc. Light Pole Base
approx. 203.7' W and 5.6' S of the N.E. Cor. of
Lot 2, West Towne Industrial Addition
Elevation = 1310.58 NGVD

- LEGEND**
- G = GAS MAIN
 - W = WATER MAIN
 - SS = SANITARY SEWER
 - SWS = STORM WATER SEWER
 - UGE = UNDER GROUND ELECTRIC
 - UGT = UNDER GROUND TELEPHONE
 - E.B. ELECTRIC BOX
 - L.P. LIGHT POLE
 - SWS M.H. STORM WATER SEWER MANHOLE

HORIZONTAL CONTROL POINTS

C.P. NO. 1	N 20041.08 E 19574.30	1/2" Pipe w/ SRB Cap Found, NW Cor. of Lot 2, West Towne Industrial Add.
C.P. NO. 2	N 19526.10 E 19574.17	1/2" Pipe w/ SRB Cap Found, SW Cor. of Lot 2, West Towne Industrial Add.
C.P. NO. 3	N 19623.77 E 20097.06	1/2" Pipe w/ SRB Cap Found, SE Cor. of Lot 2, West Towne Industrial Add.
C.P. NO. 4	N 20048.83 E 20101.86	1/2" Pipe w/ SRB Cap Found, NE Cor. of Lot 2, West Towne Industrial Add.