

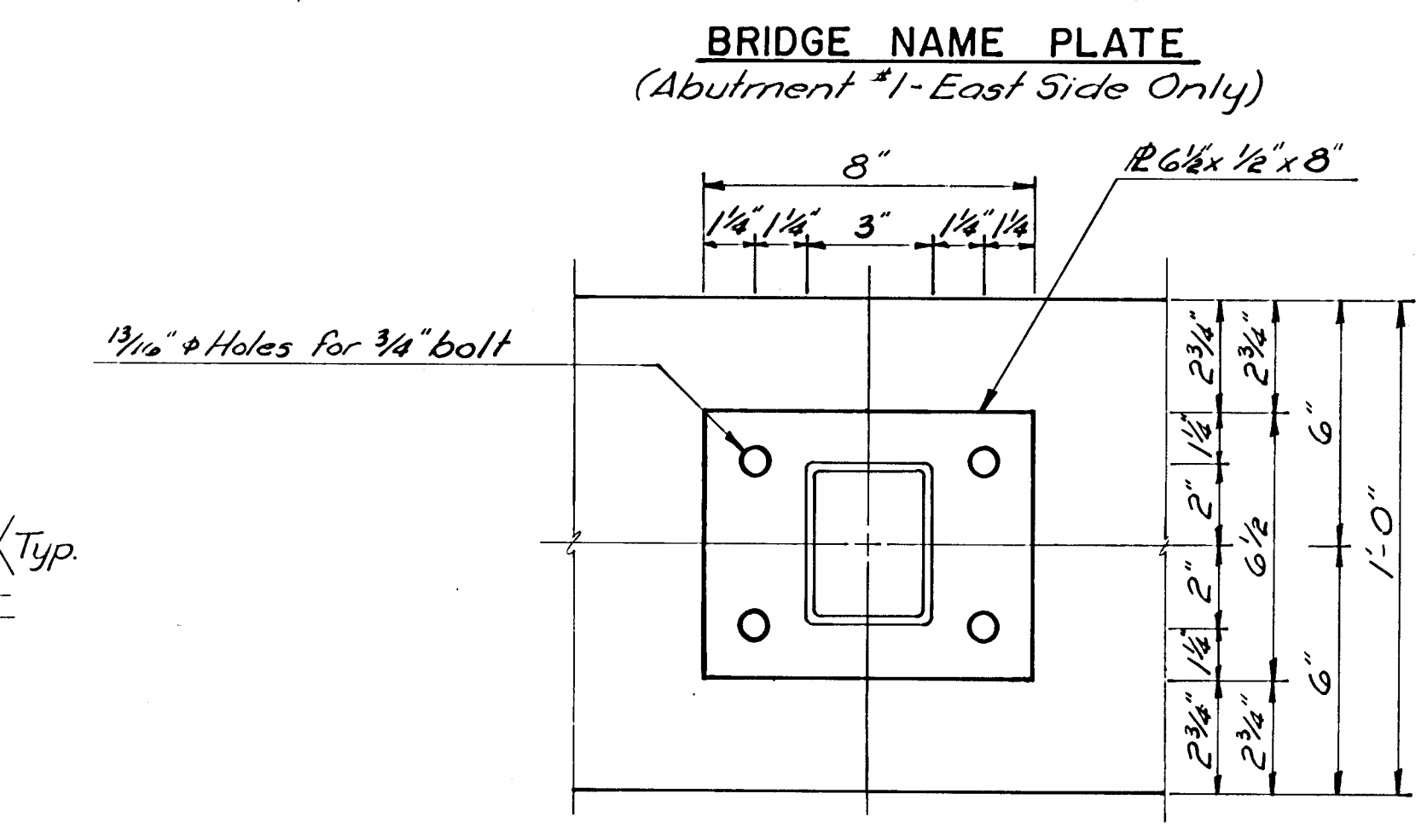
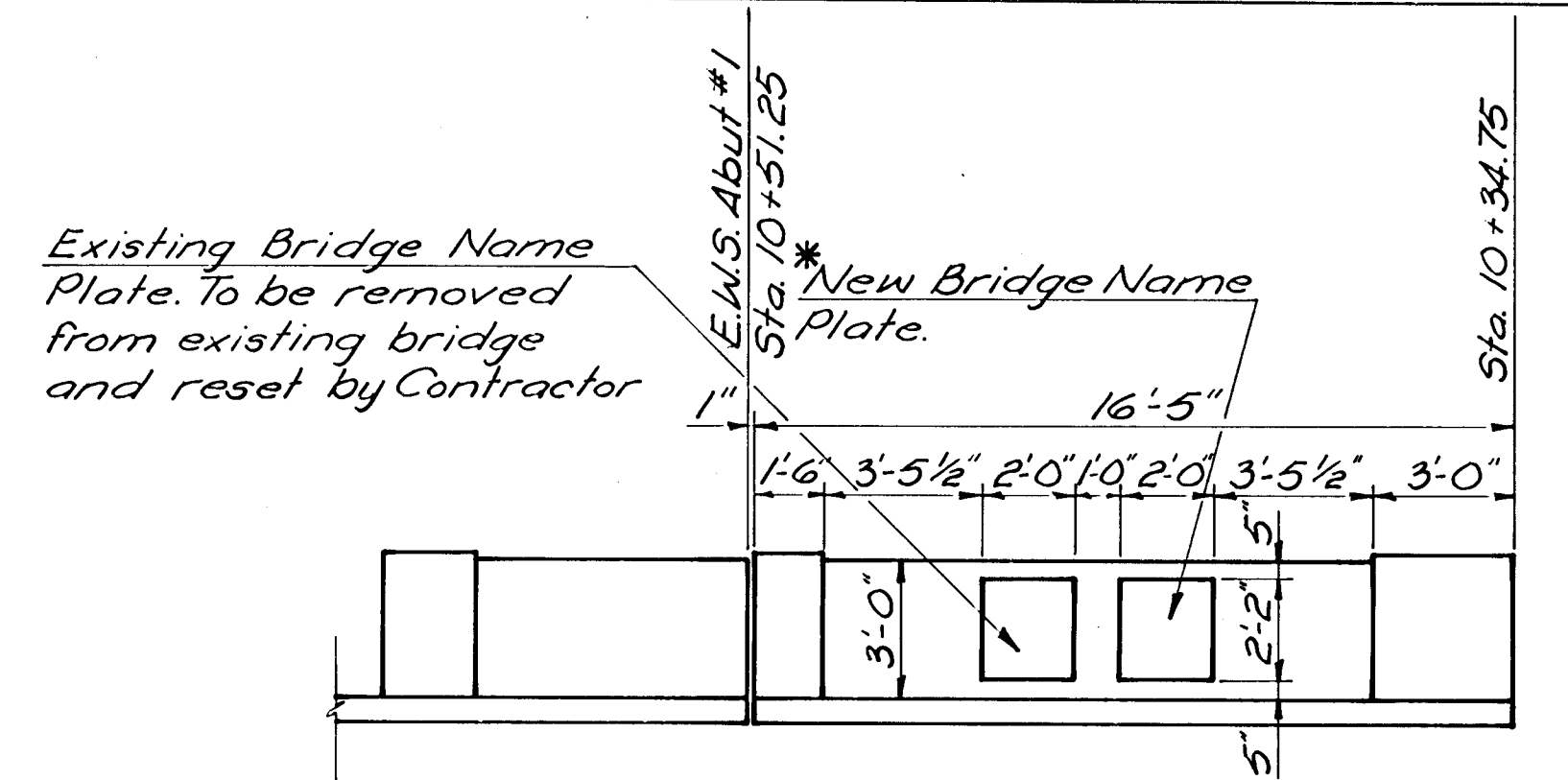
PROJECT NO.	FISCAL YEAR	SHEET NO.	TOTAL SHEETS
DAKB 576042	19 77	13	17

*New Bridge Name Plate shall be 3/4"x24"x26" bronze with concealed mountings. It shall have a 1" wide border and ribbon style letters. It shall contain the following information:

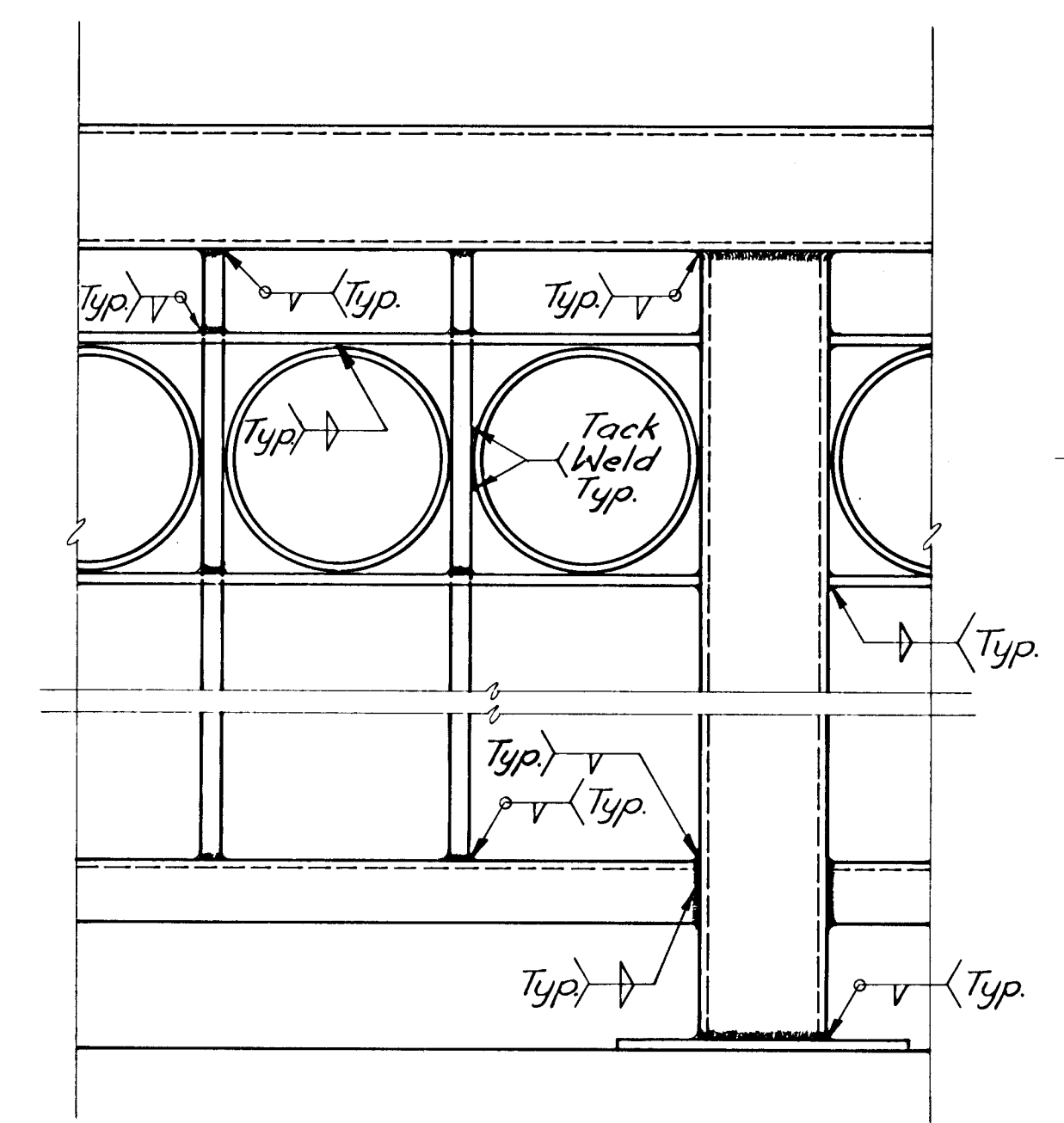
WOODMAN BRIDGE
 1976
 CITY OF WICHITA
 JAMES M. DONNELL-MAYOR
 GLENN J. SHANAHAN VICE MAYOR
 A.F. (TONY) CASADO
 ROBERT I. CORY
 CONNIE A. PETERS
 COMMISSIONERS
 E. H. DENTON
 CITY MANAGER
 DESIGN LOADING HS20-44

GENERAL NOTES

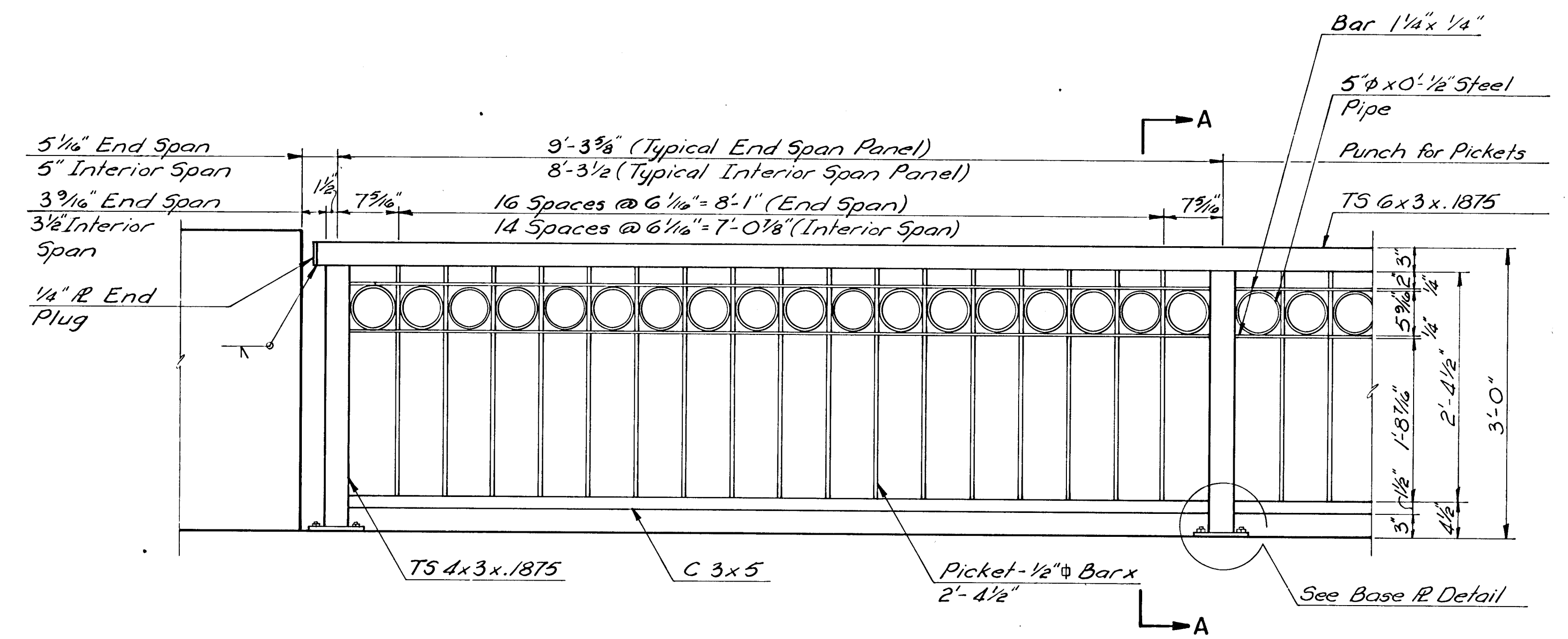
The top horizontal member of the rail and the posts shall be steel hollow structural tubing. Other shapes and plates shall conform to ASTM designation A36. All steel pipe shall conform to ASTM designation A53. Rail shall be fabricated full length for each section, and shall be fabricated to match vertical curvature of the structure. Rail posts shall be perpendicular to top of parapet. Shims may be used between concrete and base plate of posts.
 Anchors shall be 3/4" standard snap-off Phillips Red Head or approved equal. Washers shall conform to article 1006.14(e) of the standard specifications for State Road and Bridge Construction 1973 Edition, Kansas Department of Transportation.
 Exposed portion of bolt and washer shall receive two coats of black paint.
 All parts of handrail shall be given one coat of red lead paint, one coat of black paint in the shop and one coat of black paint in the field.



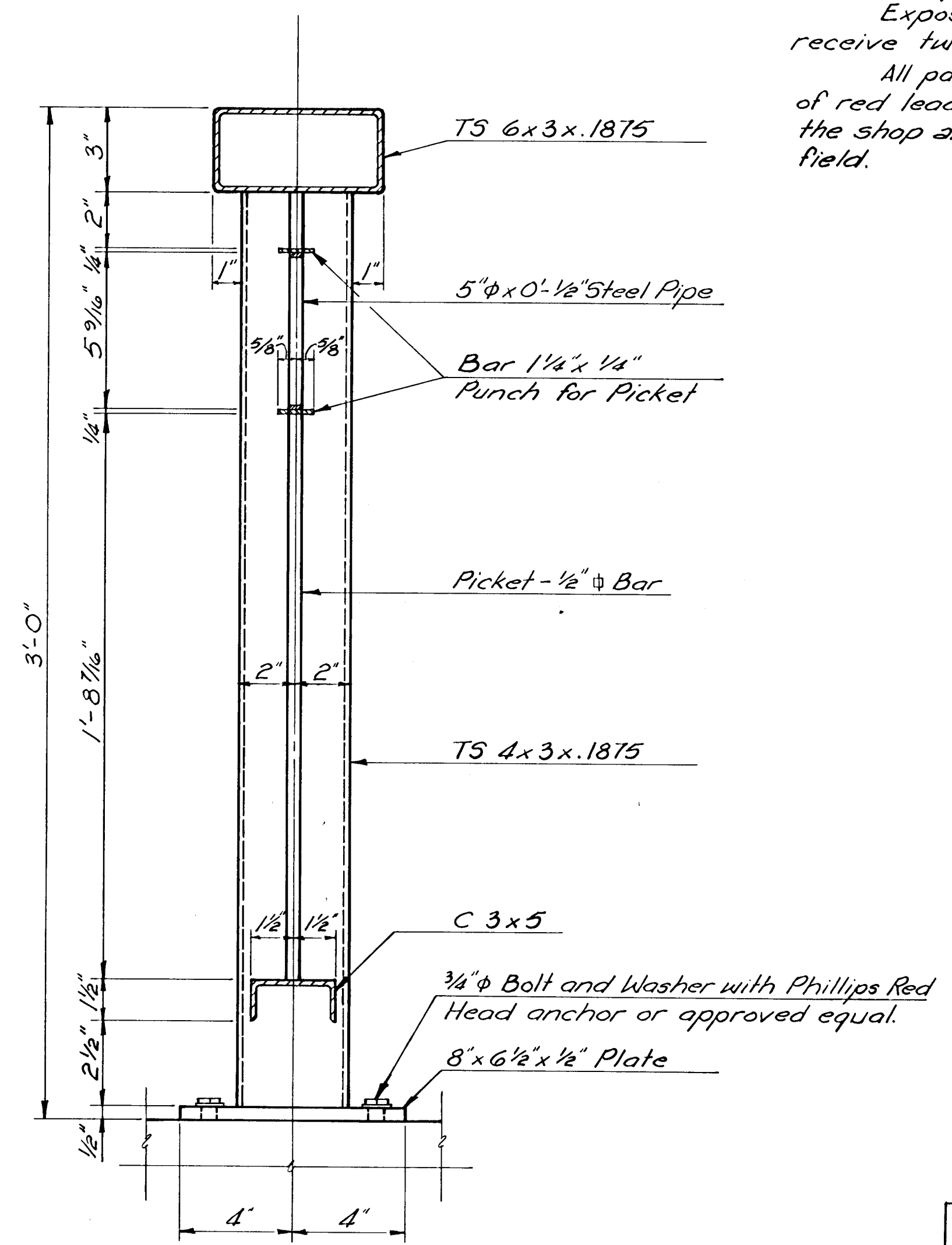
Contractor shall furnish rubbings to Engineer for approval prior to casting name plate. Cost of furnishing and installing the new name plate and the cost of removing and resetting the existing name plate shall be included in the price bid for Class I Concrete.



WELD DETAIL
 All welds shall be 3/16" unless otherwise noted.



METAL HANDRAIL ELEVATION



SECTION A-A

39.00 per 20' or less 19 1/2

Kenny Skene

CITY OF WICHITA KANSAS
 R.W. LINN, PE CITY ENGINEER
HANDRAIL DETAILS
 WOODMAN BRIDGE
 OVER THE LITTLE ARKANSAS RIVER
 CITY OF WICHITA PROJECT NO. DAKB 576042
PROFESSIONAL ENGINEERING CONSULTANTS, P.A.
 ENGINEERS
 WICHITA, KANSAS

Designed by	Checked by
Drawn by	Date
	Job No.