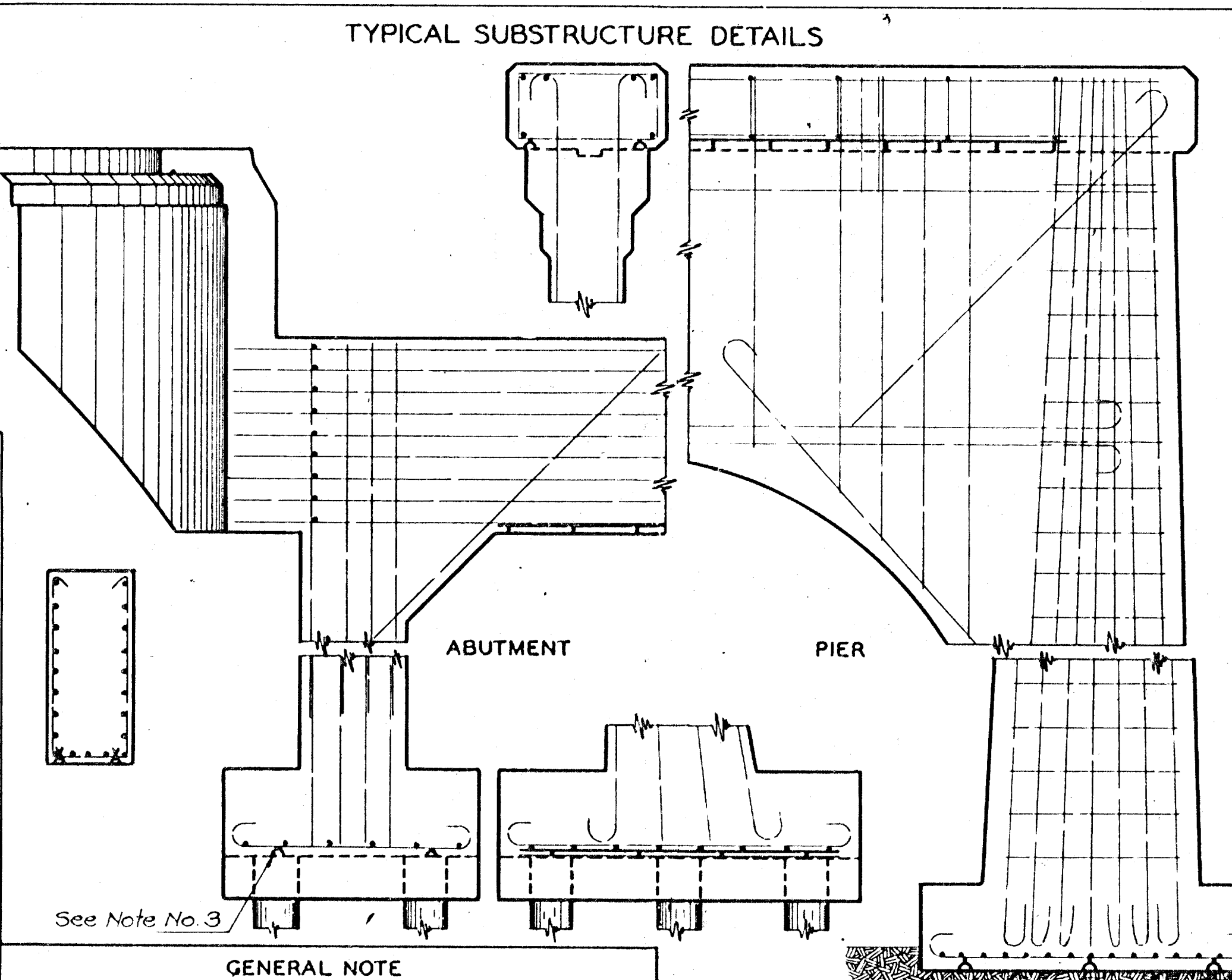
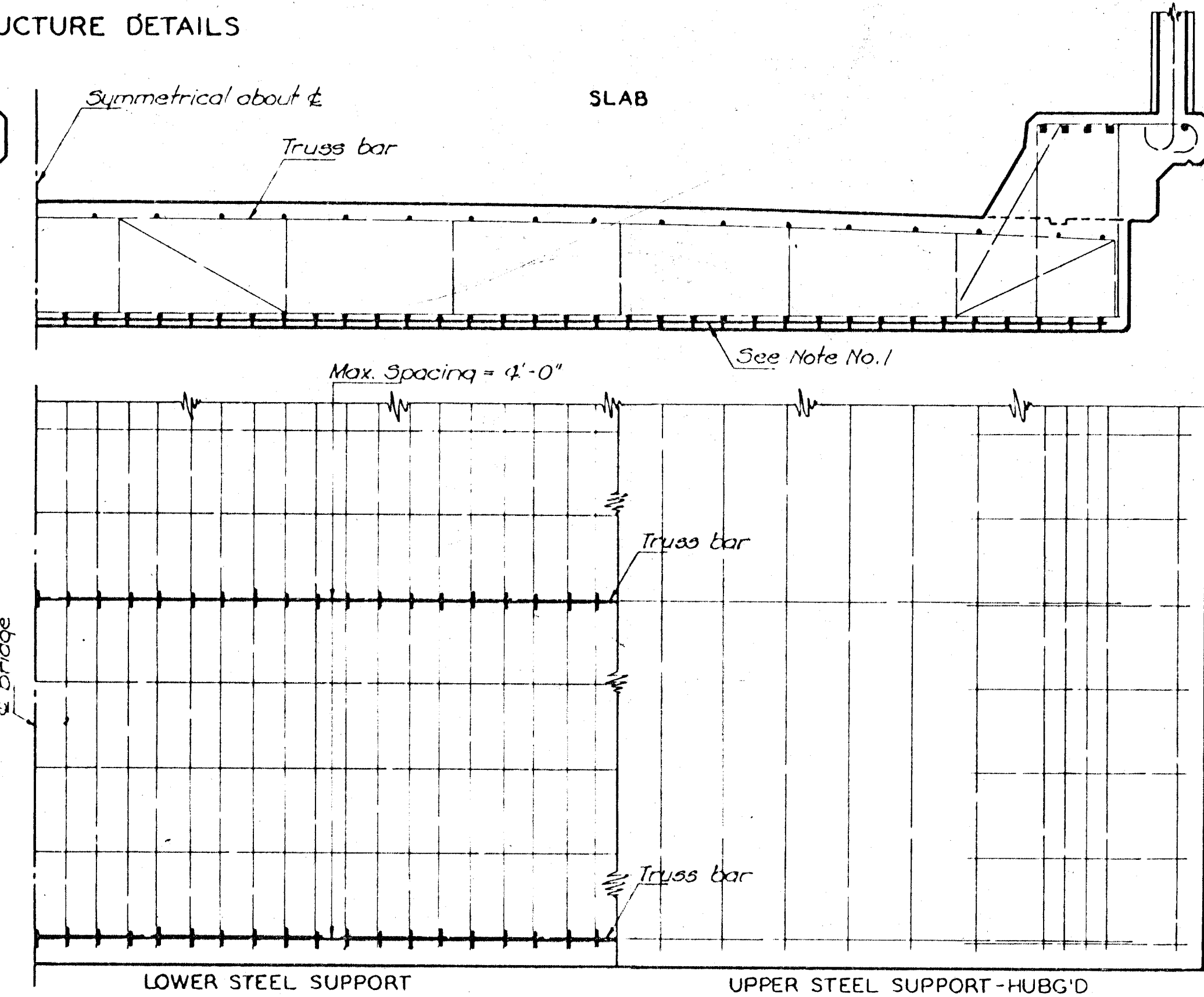
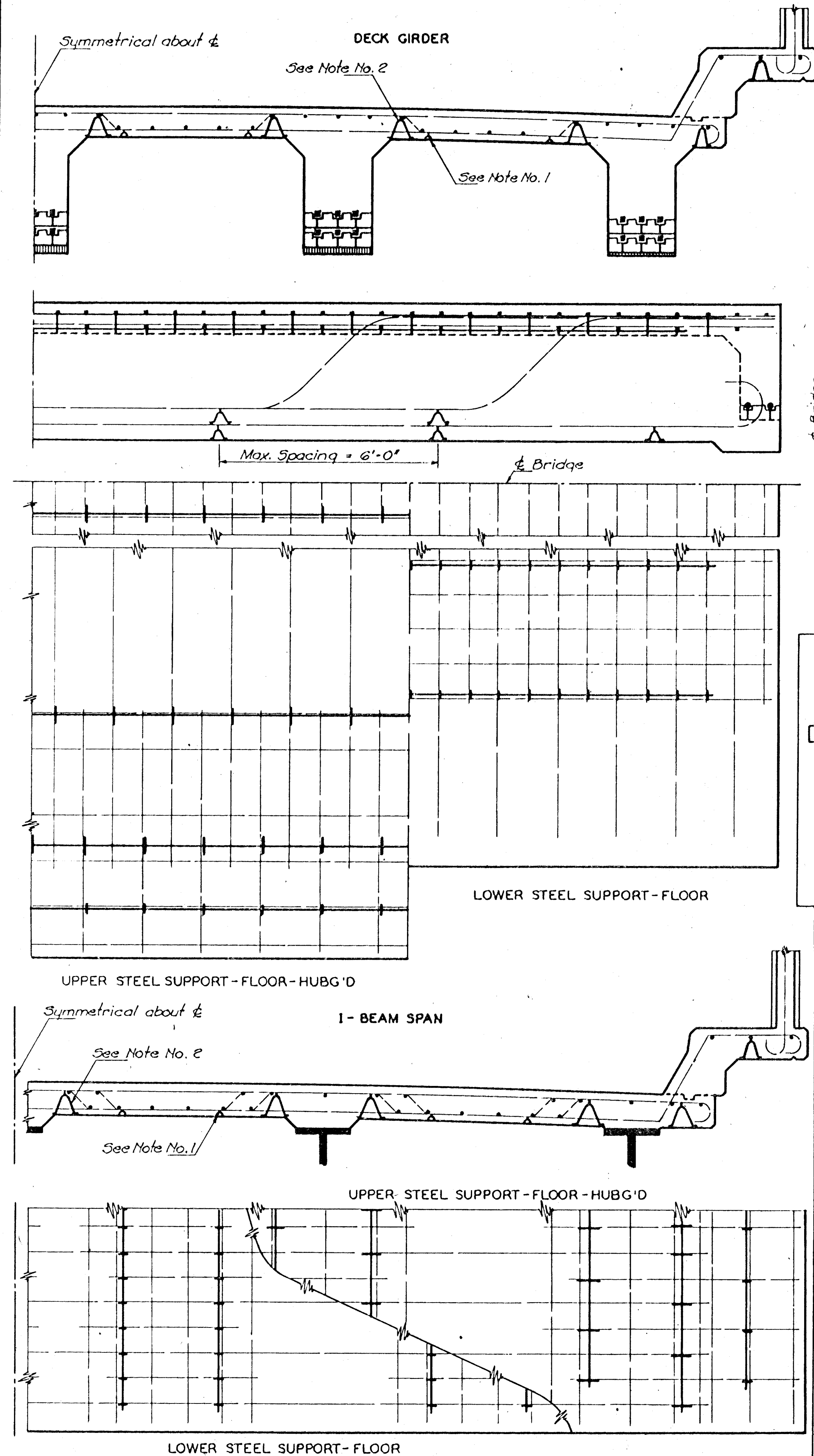


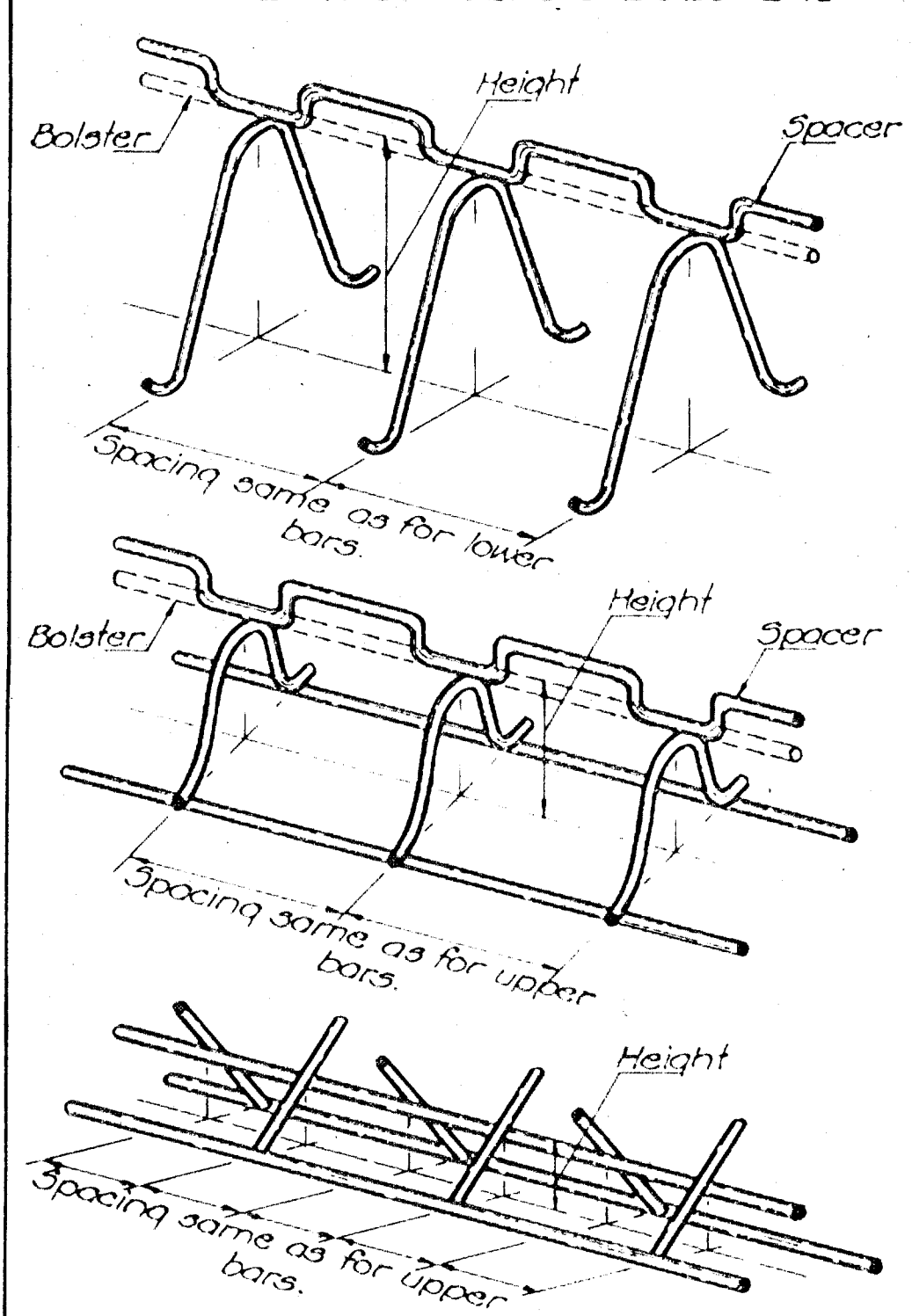
TYPICAL SUPERSTRUCTURE DETAILS



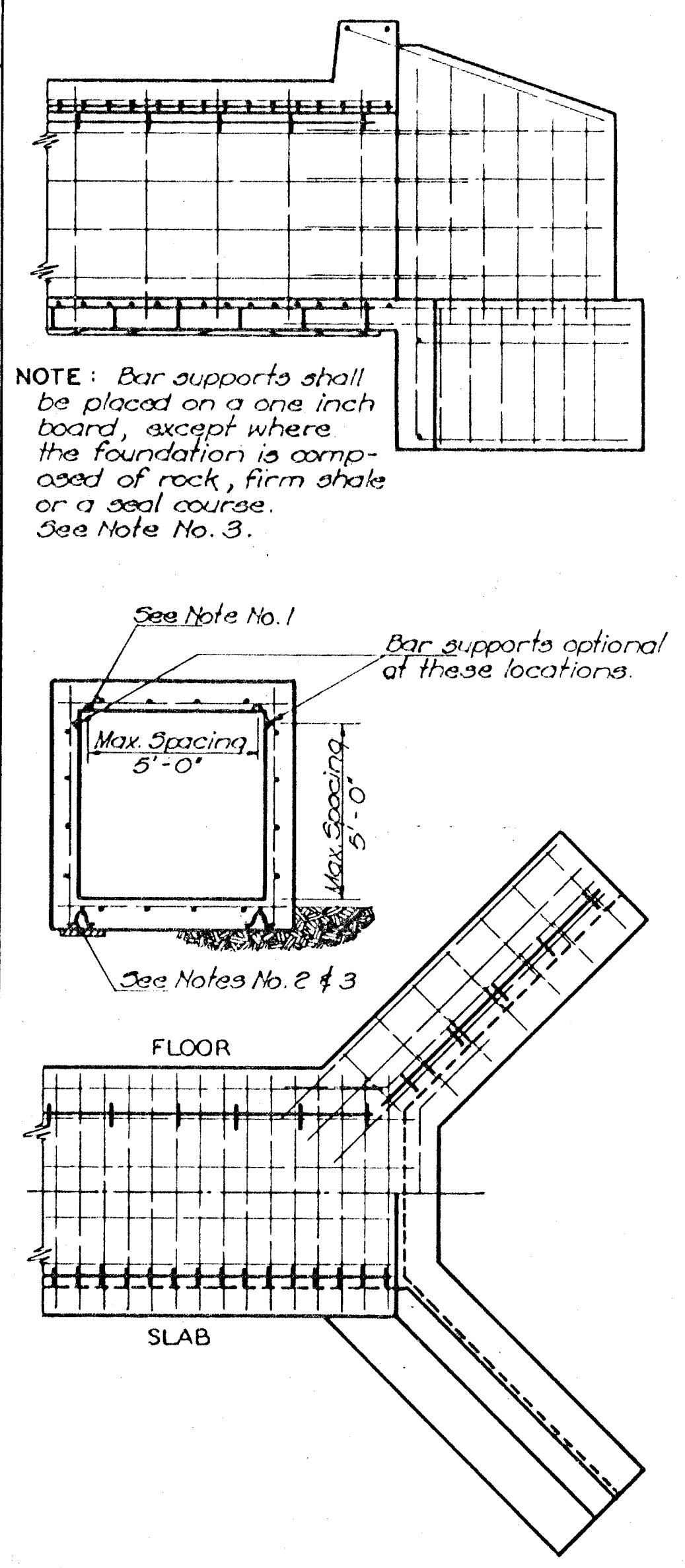
GENERAL NOTE
 Spacings shown are maximum. Sufficient supports shall be used, as determined by the Engineer, to retain the reinf. steel in position. Approved designs and arrangements of Supports or Spacers other than as shown on this sheet, may be used with the permission of the Engineer. Component parts of Supports and Spacers shall be securely welded at all contact points. Legs shall be so constructed that only the ends bear upon the forms.
 Wire used for Supports and Spacers shall be of sufficient size to insure stability of Reinforcing Steel at the position shown on the Plans, within the limits indicated by Notes 1 & 2. Wire supports shall be supplemented with form ties or other approved devices where necessary.

NOTE 1: The lower side of Reinforcing Steel in these locations shall be not less than one and one half inch (1 1/2") from the surface of the concrete.
NOTE 2: The upper side of Reinforcing Steel in these locations shall be within the limits shown on the Plans.
NOTE 3: The use of Wire Supports for Reinforcing Steel in these locations is optional. Where they are not used the Steel shall be supported from the forms by means of wire ties or saddles.
NOTE 4: All bar supports or spacers in contact with forms shall be plastic tipped.

BEAM BAR SPACERS & BOLSTERS



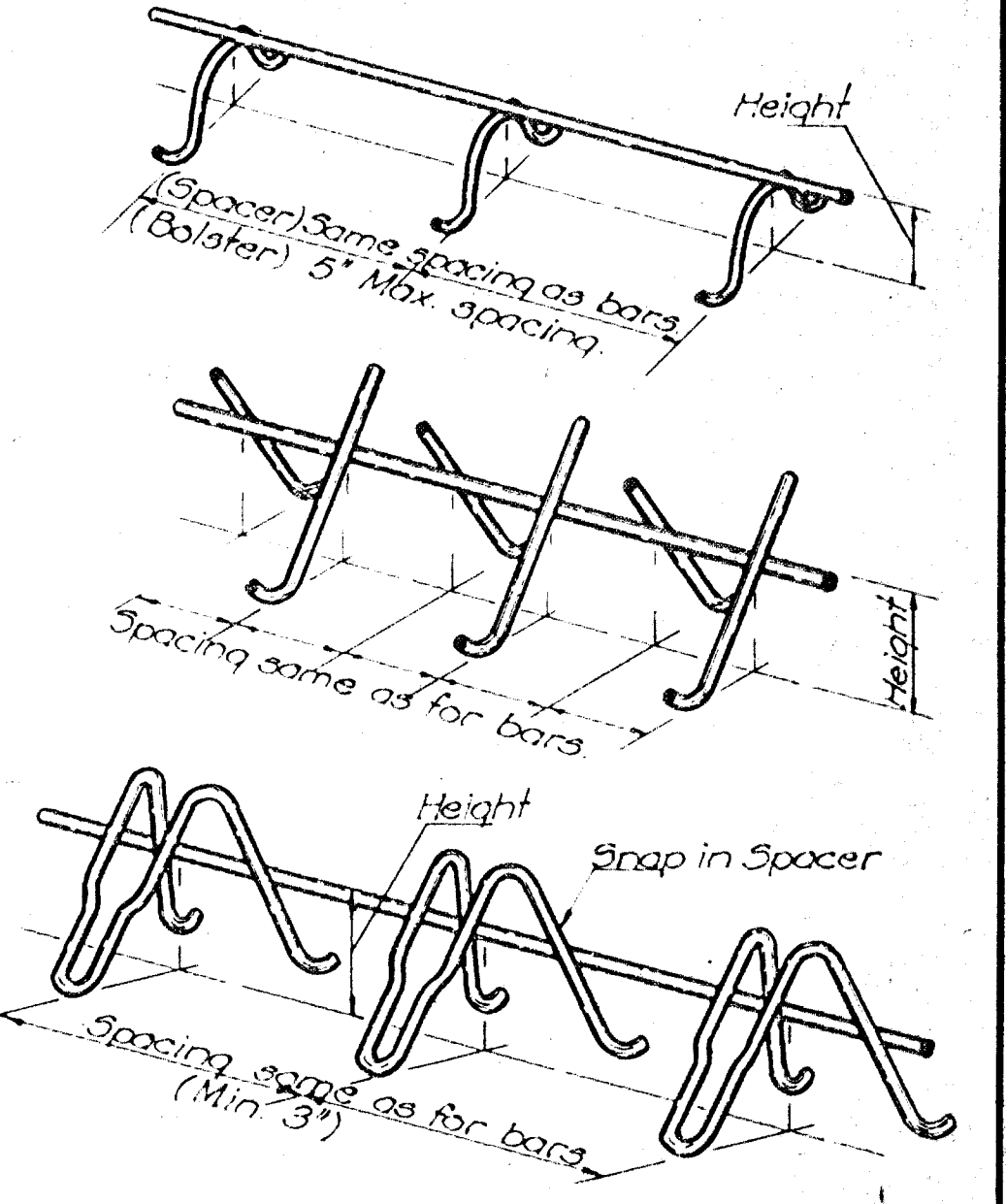
TYPICAL CULVERT DETAILS



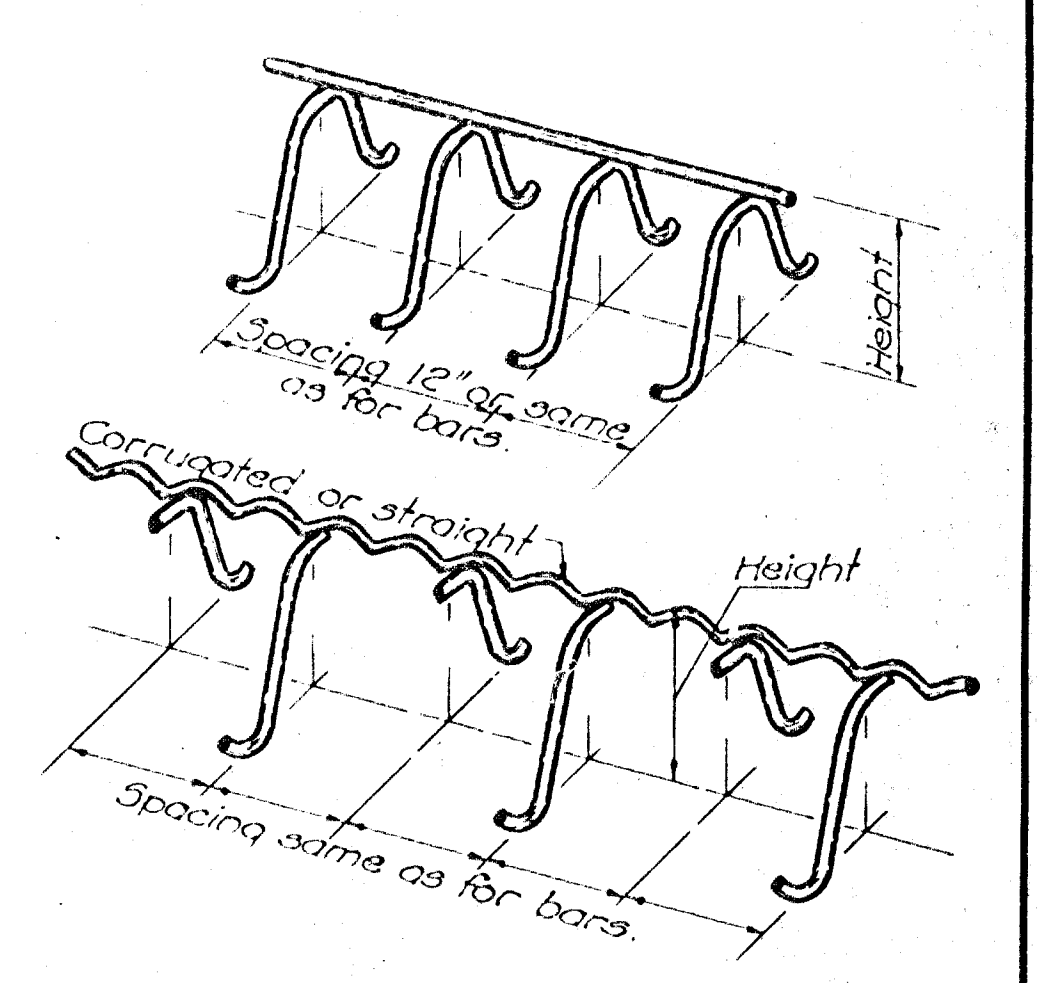
Proj. No.	Fiscal Year	Sheet No.	Total Sheets
DAKB 576042	1977	17	17

Section

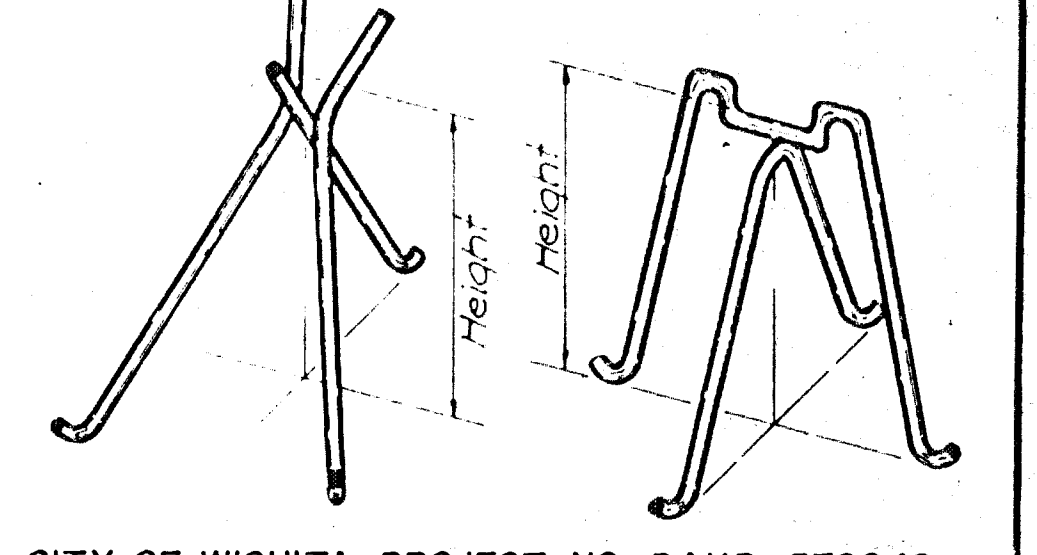
LOW SLAB BAR SPACERS & BOLSTERS



HIGH SLAB BAR SPACERS & BOLSTERS



INDIVIDUAL HIGH BAR CHAIRS



CITY OF WICHITA PROJECT NO. DAKB 576042

NO.	DATE	REVISIONS	BY	APP'D
6				

STATE HIGHWAY COMMISSION OF KANSAS

SUPPORTS AND SPACERS FOR REINFORCING STEEL

STD. NO. 610 SCALE No. Scale
 DESIGNED BY E.A.P. DATE 7-23-73. DETAILED BY J.V.B. TRACED BY J.V.B.
 CHECKED BY S.C. APPROVED BY L.H. Unvest DATE 4-17-74