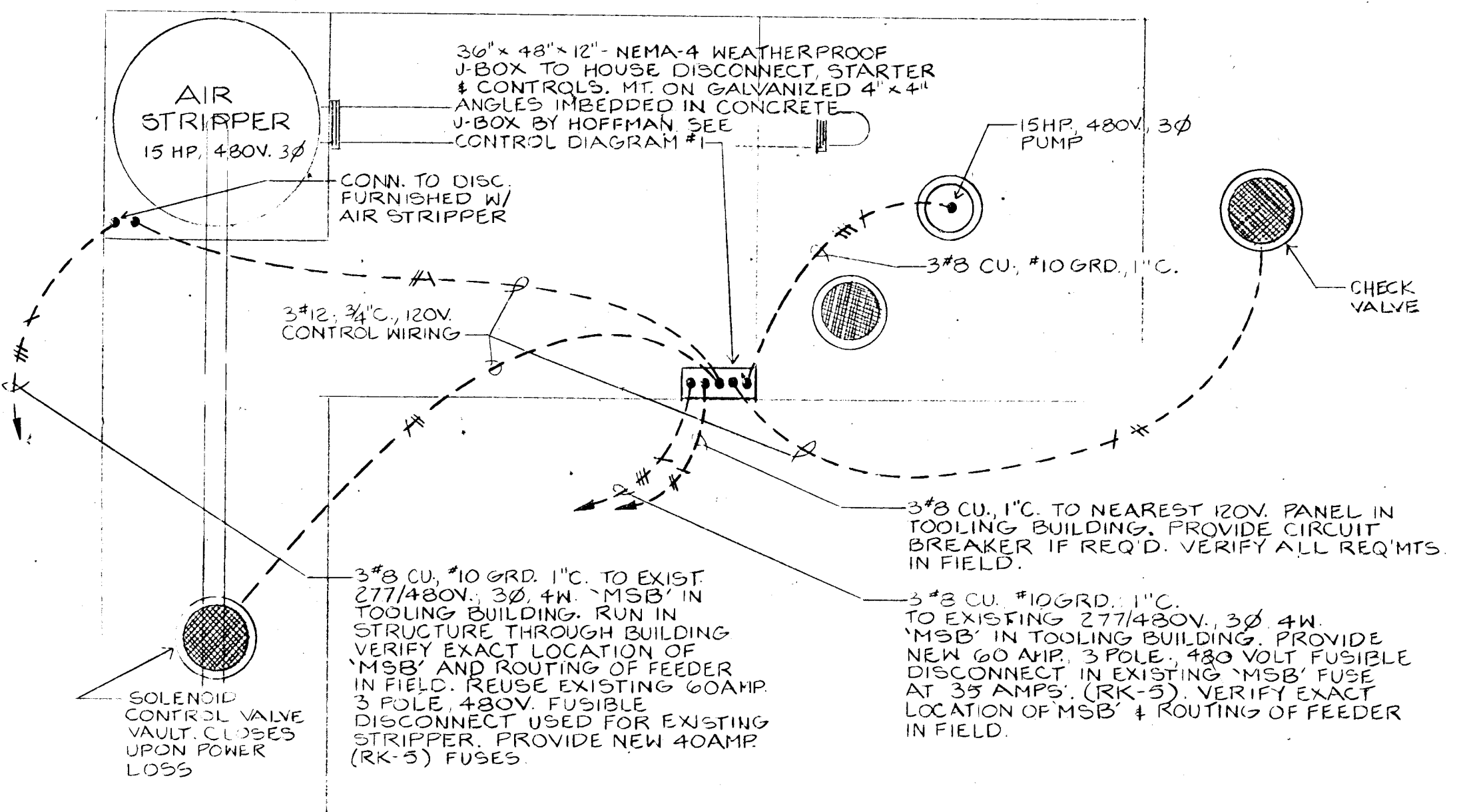
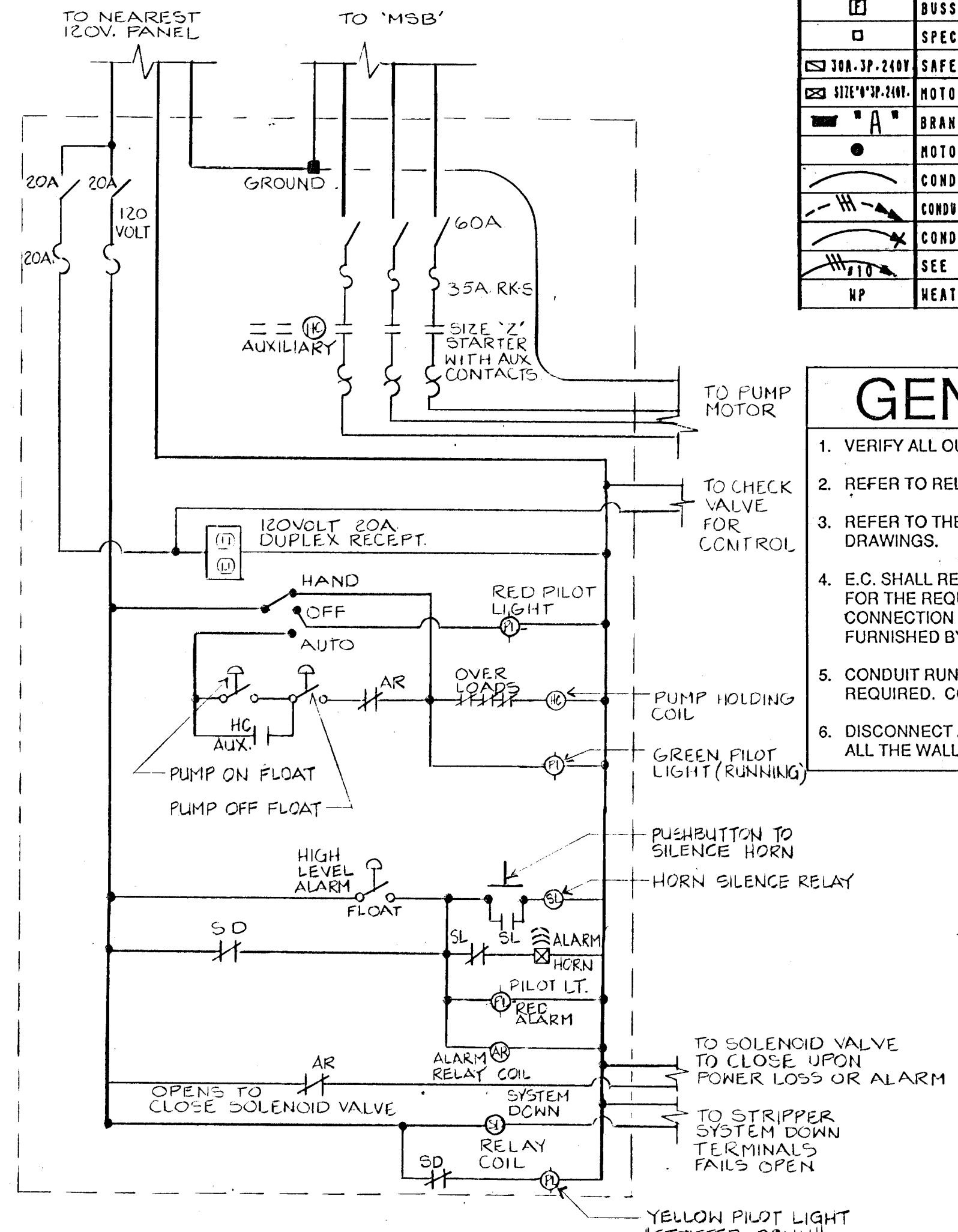


- NOTES:
- 1. POLE FURNISHED AND INSTALLED BY KG&E.
 - 2. ALL GUYING REQUIRED TO HOLD CUSTOMER'S SERVICE IS FURNISHED BY CUSTOMER.
 - 3. GROUND ROD, ALL GROUND WIRE AND MOULDINGS FURNISHED AND INSTALLED BY KG&E.
 - 4. MAIN FUSED DISCONNECT.
 - 5. METER AND SOCKET FURNISHED BY KG&E AND SOCKET INSTALLED BY CUSTOMER.
 - 6. METALLIC CONDUIT WITH CONDUCTORS AND WEATHERHEADS OWNED AND INSTALLED BY CUSTOMER.
 - 7. UNDERGROUND PUMP FEEDERS.
 - 8. GROUND ONE CORNER OF THE DELTA ON ALL NEW 480V, 3-PHASE OIL FIELD SECONDARIES WHEN SYSTEM NEUTRAL IS AVAILABLE.
 - 9. 500V ARRESTERS FURNISHED AND INSTALLED BY KG&E.
 - 10. INSTALL LIGHTNING ARRESTERS: ON THE TRANSFORMER SIDE OF THE METER IF THE TRANSFORMER IS OVER TWO SPANS IN LENGTH.
 - 11. ADD LIGHTNING ARRESTERS IF THIRD PHASE IS NOT GROUNDING.
 - 12. RISER WITH LOAD CONDUCTORS ARE TO EXIT EITHER BACK, BOTTOM, OR SIDE OF METER SOCKET.
 - 13. KG&E WILL FURNISH AND INSTALL UP TO 125 FT OF SERVICE CABLE, MEASURED FROM THE TRANSFORMER STATION.
 - 14. 36" X 48" X 12" NEMA-4 WEATHER PROOF J-BOX TO HOUSE DISCONNECTS, STARTERS AND ALL CONTROLS. MOUNT ON SERVICE POLE. SEE CONTROL DIAGRAM #2.

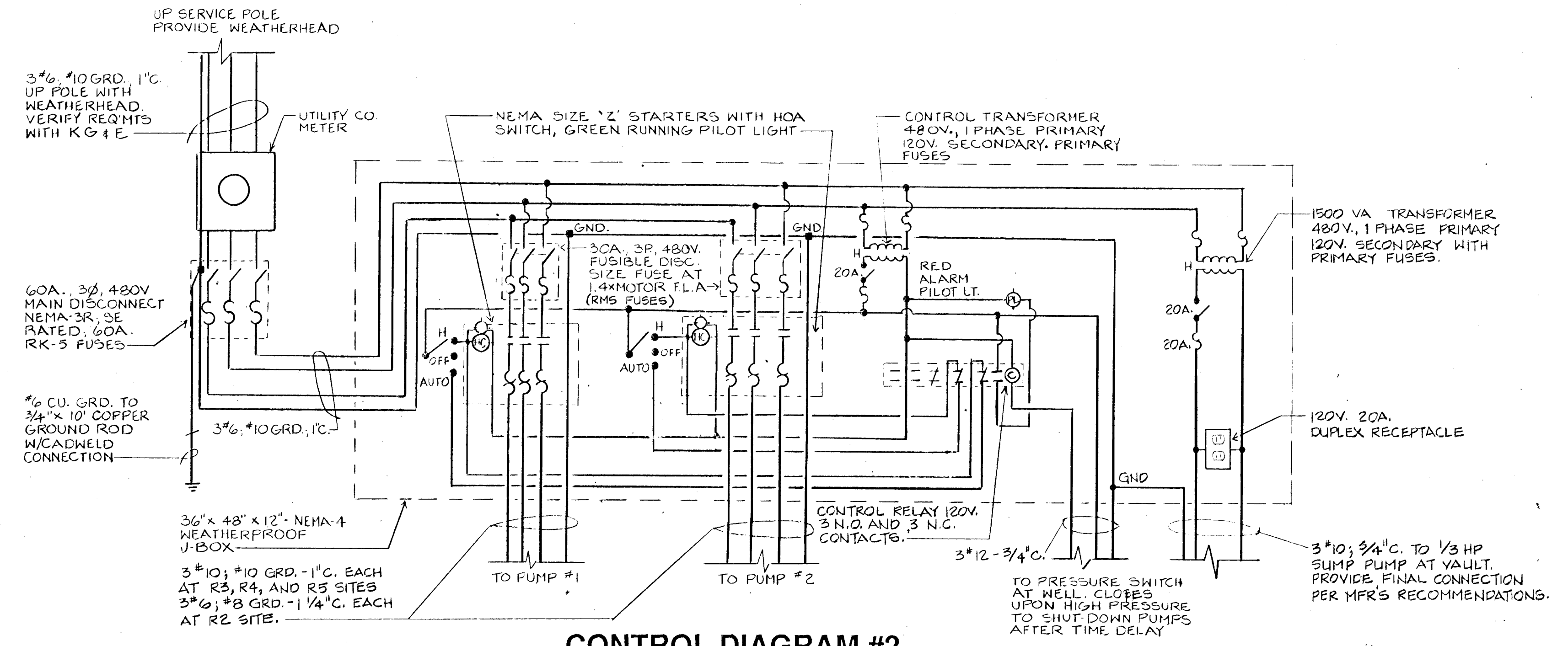
WELL ELECTRICAL SERVICE POLE DETAIL
 VERIFY LOCATION AND ALL REQUIREMENTS WITH KG&E.
 TYPICAL 4 LOCATIONS. SEE KEY MAP FOR WELL LOCATIONS.



**AIR STRIPPER AND PUMP STATION
 SITE ELECTRICAL PLAN**



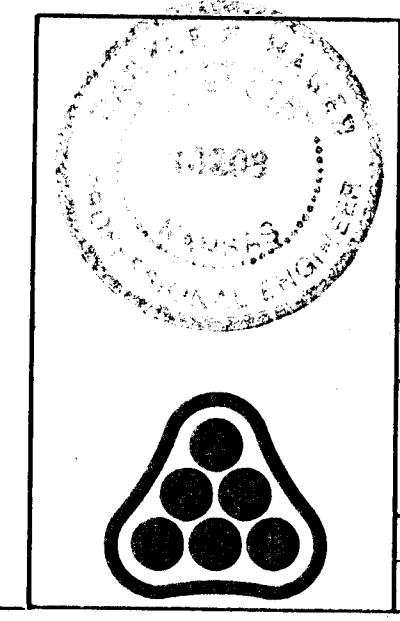
CONTROL DIAGRAM #1
 NOTE: SUBMIT SHOP DRAWINGS FOR REVIEW OF ALL CONTROLS, ALL CONTROLS MOUNTED IN J-BOX. PILOT LIGHTS MOUNTED IN BOX FACE - WEATHER PROOF. LABEL WITH PHENOLIC PLASTIC.



CONTROL DIAGRAM #2
 TYPICAL OF FOUR LOCATIONS. MOUNT ALL EQUIPMENT ON SERVICE POLE. VERIFY SERVICE POLE LOCATIONS WITH KG&E.

SYMBOL LIST		
SYMBOL	DESCRIPTION	ROUTING
[Symbol]	JUNCTION BOX	
[Symbol]	BUS/STAT FUSTAT IN EQUIP. SERVED	
[Symbol]	SPECIAL DEVICE (AS NOTED)	
[Symbol]	3Ø 480V 3Ø 210V SAFETY SWITCH (AMPS, POLE, VOLTAGE)	6'-0" TO TOP
[Symbol]	3Ø 480V 3Ø 4W MOTOR STARTER (SIZE, POLE, VOLTAGE)	6'-0" TO TOP
[Symbol]	BRANCH CIRCUIT PANEL & PANEL DESIG.	6'-0" TO TOP
[Symbol]	MOTOR	
[Symbol]	CONDUIT RUN 2#12 & 1#12 GRD. -1/2" Ø	CELL./WALL
[Symbol]	CONDUIT RUN 2 CIRCUITS, 3#12 & 1#12 GRD. -1/2" Ø	EARTH/FLOOR
[Symbol]	CONDUIT RUN PARTIAL CIRCUIT	
[Symbol]	SEE NOTE # 5	
[Symbol]	NP	WEATHERPROOF

- GENERAL NOTES**
1. VERIFY ALL OUTLET LOCATIONS ON THE JOB PRIOR TO ROUGH-IN.
 2. REFER TO RELATED DRAWINGS FOR RELATED INFORMATION.
 3. REFER TO THE SPECIFICATIONS FOR DATA NOT ON THE DRAWINGS.
 4. E.C. SHALL REFER TO OTHER DRAWINGS AND SPECIFICATIONS FOR THE REQUIREMENTS ASSOCIATED WITH WIRING AND CONNECTION OF INTERLOCKING AND CONTROLS OF EQUIPMENT FURNISHED BY OTHERS.
 5. CONDUIT RUN W/CONDUCTORS AS INDICATED, CONDUIT SIZE AS REQUIRED. CONDUIT RUN TO PANEL DEVICE.
 6. DISCONNECT AND REMOVE FEEDER TO EXISTING AIR STRIPPER ALL THE WALL BACK TO 'MSB' IN TOOLING BUILDING.



No.	Revision	By	Date
CESSNA AIRCRAFT COMPANY WICHITA, KANSAS ELECTRICAL PLAN WITHDRAWAL WATERLINE IMPROVEMENTS PROFESSIONAL ENGINEERING CONSULTANTS, P.A. ENGINEERS WICHITA, KANSAS			
Designed by	D.E.H.	Job No.	34-8764E
Drawn by	T.R.	Date	August, 1988
		Sht.	5 of 20